



Cost of Ink Per Page Analysis

October 2008

Italy


Includes ink cartridge pricing provided by  **IDC**

TABLE OF CONTENTS

Summary and Scope of Analysis	3
Cost of Ink Per Page.....	5
Italy: Mono - Cost of Ink Per Page	5
Italy: Color - Cost of Ink Per Page.....	6
Italy: Photo - Cost of Ink Per Page	7
Methodology for Calculation of Cost of Ink Per Page.....	8
A. QualityLogic Yield Declarations.....	8
B. Ink Cartridge Pricing.....	11
C. Cost of Ink Per Page – Per Cartridge	12
D. Cost of Ink Per Page.....	14
Contact Information	16
Appendix A: QualityLogic Declared Yield Test Results.....	17
ISO Test Results - Summary	18
Test Methodology	18
Detailed Test Results	21
Sub-Appendix – Test Pages.....	63

Summary and Scope of Analysis

For more than 20 years, QualityLogic Inc. has been a premier developer and provider of essential testing solutions to companies that design, build, or purchase printers and printing technology. Our products and services help our customers understand how the products they make or buy conform to specifications, or compare to reference implementations or competing products. We are active members of international standards organizations including ISO and Ecma International, and provide testing assistance to leading technology publications who publish printer reviews.

At the request of Eastman Kodak Company, QualityLogic calculated and compared the Cost of Ink Per Page (CoIPP) of the EASYSHARE 5100, 5300, 5500, ESP-3 and ESP-5 All-in-One Printers to 14 competing printers selected by Kodak. Kodak's intent was to select printers with significant market share from leading manufacturers.

Monochrome and color cartridge yields for all printers were determined following ISO yield standards, and photo yields were determined using QualityLogic's photo yield methodology*.

Ink prices from Italy for printers in the test were provided to QualityLogic by IDC**, a premier global provider of market intelligence. The manufacturer's suggested retail price (MSRP) includes IVA. Kodak provided cartridge pricing for their printers. For this report, only standard as-shipped-in-box cartridges or the standard-yield ink cartridges in single quantity pricing (i.e no multi-packs, high yield, combo packs, value packs or special promotions) were evaluated for the purpose of making like-basis comparisons between all printers.

Although there are many factors in total cost of ownership, Cost of Ink Per Page (CoIPP) is an important factor when evaluating total cost of ownership with printer systems.

Cost of Ink Per Page was calculated by dividing these cartridge prices by the yield of each cartridge in the test.

* All references to 'photo' in this report refer to 4x6 inch (approximately 10 x 15 cm) borderless photos.

** IDC believes that the list pricing information provided is accurate; however, it is not responsible for any errors, inaccuracies, or variances caused by changes made outside of its defined survey period (May 2008).

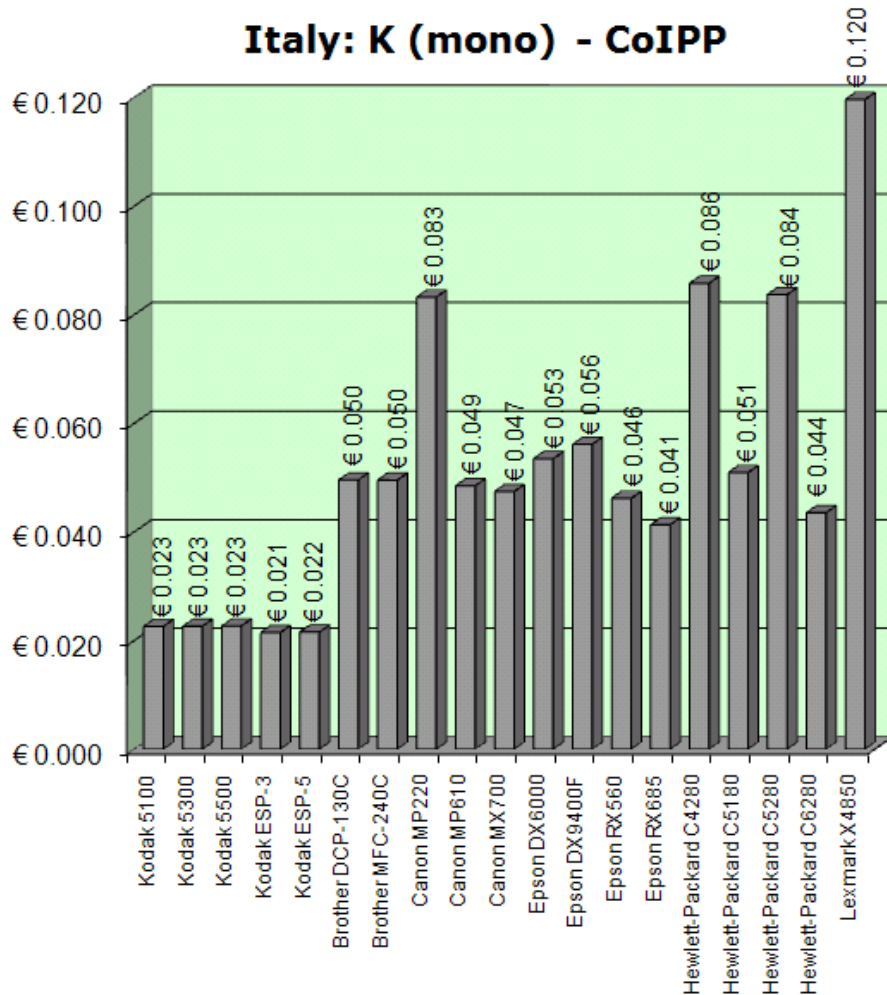
The following printers and corresponding ink cartridges were included in this Cost of Ink Per Page analysis:

Company	Printer	Cartridges
Kodak	EASYSHARE 5100 EASYSHARE 5300 EASYSHARE 5500 ESP-3 ESP-5	Color Ink Cartridge 10, Black Ink Cartridge 10 Color Ink Cartridge 10, Black Ink Cartridge 10 Color Ink Cartridge 10, Black Ink Cartridge 10 Color Ink Cartridge 10, Black Ink Cartridge 10 Color Ink Cartridge 10, Black Ink Cartridge 10
Brother	DCP-130C MFC-240C	LC1000BK, LC1000C, LC1000M, LC1000Y LC-1000BK, LC-1000C, LC-1000M, LC-1000Y
Canon	PIXMA MP220 PIXMA MP610 PIXMA MX700	PG-37, CL-38 PGI-5BK, CLI-8C, CLI-8M, CLI-8Y, CLI-8BK PGI-5BK, CLI-8C, CLI-8M, CLI-8Y
Epson	Stylus DX6000 Stylus DX9400F Stylus Photo RX560 Stylus Photo RX685	T0711, T0712, T0713, T0714 T0711, T0712, T0713, T0714 T0801, T0802, T0803, T0804, T0805, T0806 T0801, T0802, T0803, T0804, T0805, T0806
Hewlett-Packard	Photosmart C4280 Photosmart C5180 Photosmart C5280 Photosmart C6280	HP350, HP351 HP363 C8721WN, HP363 C8771WN, HP363 C8772WN, HP363 C8773WN, HP363 C8774WN, HP363 C8775WN HP350, HP351 HP363 C8721WN, HP363 C8771WN, HP363 C8772WN, HP363 C8773WN, HP363 C8774WN, HP363 C8775WN
Lexmark	X4850	42A, 41A

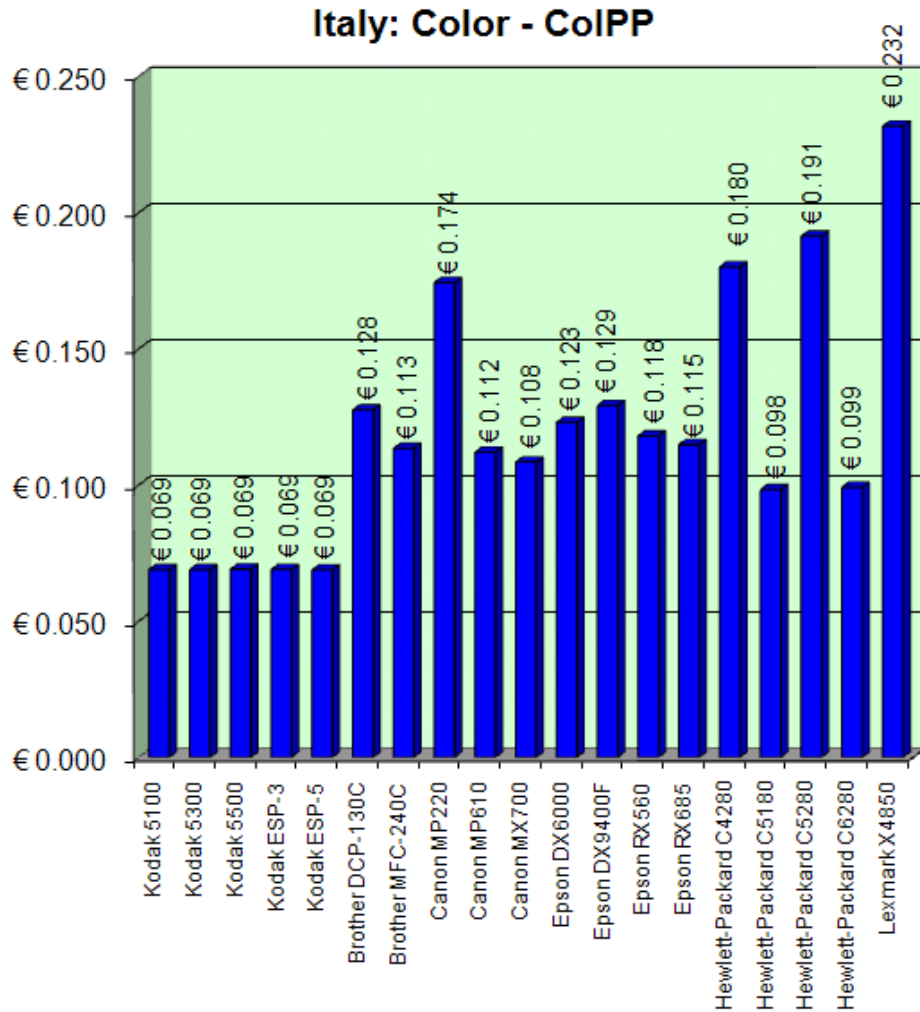
Cost of Ink Per Page

The following charts summarize the Cost of Ink Per Page for the printers tested using cartridge prices from Italy. There are charts for monochrome, color, and photo printing. Details of how these costs were calculated can be found in the "Methodology for Calculation of Cost of Ink Per Page" following these graphs.

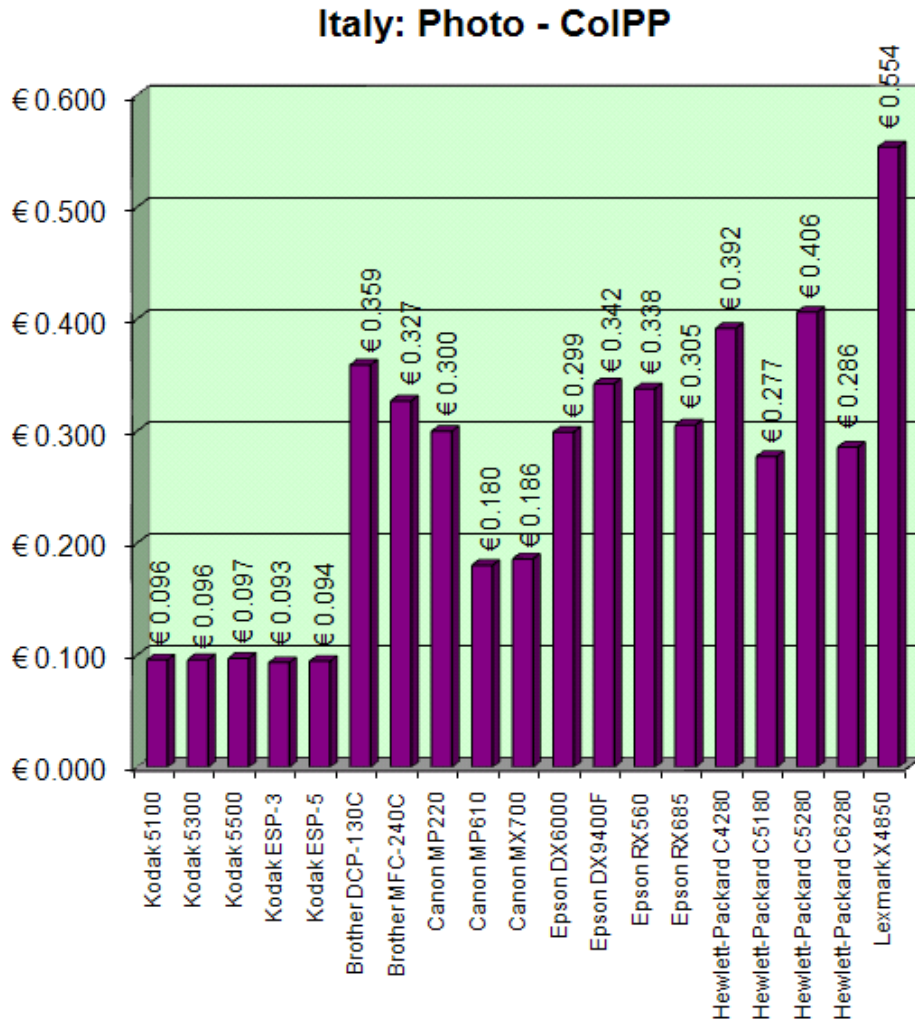
Italy: Mono - Cost of Ink Per Page



Italy: Color - Cost of Ink Per Page



Italy: Photo - Cost of Ink Per Page



Methodology for Calculation of Cost of Ink Per Page

The following is a step-by-step outline of how QualityLogic, using standardized yield testing methodologies and standard pricing information provided by IDC, executed this 'Cost of Ink Per Page' test for Kodak.

A. QualityLogic Yield Declarations

Yield testing is a process by which the target printers are operated with their ink or toner cartridges to exhaust the amount of ink/toner, and then pages printed are counted to determine the number of pages each cartridge yields. The requirements and operating conditions of such testing are determined by a standard set of testing criteria that will provide an objective and repeatable result.

QualityLogic is a leader worldwide in providing yield testing services. We support and follow the ISO (International Standards Organization) standards for mono and color testing. The advantage of using the ISO standards for yield testing is also supported by leading manufacturers, including Canon, Dell, Epson, HP, IBM, Kodak, Lexmark, Oki Data, Pitney Bowes, Ricoh, Toshiba, Xerox, and others.

ISO is currently working on a standard for photo ink. Until this standard is released, QualityLogic uses a methodology we developed that closely follows the current ISO standards approach.

Key provisions of these standards include:

- Standard test suites
- Minimum of nine cartridges across three printers representative of products in open market
- Clear, objective end-of-life criteria
- Controlled test environment – temperature, humidity, continuous printing
- Yield reporting requirement well defined

The following pages contain tables that relate to yield testing results. The tables show the number of pages per cartridge that can be expected with 90 percent confidence based on our testing. Numbers in black indicate primary cartridges – any cartridge where a minimum of nine cartridges across three printers could be exhausted. Supplemental cartridges are indicated by red numbers and represent those cartridges that are secondary to the purpose of the test. Although supplemental cartridges are not the key focus in the tests as shown, they are included in the test reports to ensure we get a complete understanding of the ink being used.

Generally, the 'primary' cartridges for each category of testing are:

- Mono ink – the black cartridge
- Color ink – all full density cartridges containing cyan, magenta, or yellow
- Photo ink – color cartridges or others where nine cartridges were exhausted

QualityLogic performed yield tests and provided yield test reports for all cartridges for models listed below.. Each table has abbreviated sub-headings that represent the specific ink cartridge types as follows:

- CMY = A single cartridge containing cyan, magenta and yellow *
- C = Cyan
- M = Magenta
- Y = Yellow
- K1 = Black
- K2 = A second black cartridge
- LC = Light cyan
- LM = Light magenta

These yield numbers apply to printers included in this analysis. Yields of primary and supplemental cartridges are reported, and the details of these results can be found in Appendix A.

	Mono Ink yield							
	CMY	C	M	Y	K1	K2	LC	LM
Kodak 5100	3747				537			
Kodak 5300	3753				536			
Kodak 5500	3741				535			
Kodak ESP-3	4313				555			
Kodak ESP-5	4395				551			
Brother DCP-130C		8613	10074	10115	531			
Brother MFC-240C		7012	8594	8253	545			
Canon MP220	1384				245			
Canon MP610		5701	5187	7593	524	10191		
Canon MX700		7160	6181	8698	495			
Epson DX6000		1167	1558	1782	303			
Epson DX9400F		1624	2326	2234	242			
Epson RX560		3095	3971	3290	343		2408	2388
Epson Stylus Photo RX685		3182	2786	4077	383		2932	3714
Hewlett-Packard C4280	1031				202			
Hewlett-Packard C5180		2582	1528	2407	409		15053	16132
Hewlett-Packard C5280	886				217			
Hewlett-Packard C6280		1312	769	1326	897		12226	12420
Lexmark X4850	2759				223			

* Kodak's cartridge in includes black ink and protective ink

	Color Ink yield							
	CMY	C	M	Y	K1	K2	LC	LM
Kodak 5100	378				342			
Kodak 5300	378				342			
Kodak 5500	376				342			
Kodak ESP-3	379				340			
Kodak ESP-5	379				342			
Brother DCP-130C		665	521	676	526			
Brother MFC-240C		734	645	807	544			
Canon MP220	212				234			
Canon MP610		892	667	718	492	5428		
Canon MX700		926	679	706	484			
Epson DX6000		436	274	442	243			
Epson DX9400F		377	282	394	238			
Epson RX560		1045	490	491	327		451	660
Epson Stylus Photo RX685		1029	491	585	353		381	754
Hewlett-Packard C4280	156				197			
Hewlett-Packard C5180		397	388	482	466		13296	11039
Hewlett-Packard C5280	141				198			
Hewlett-Packard C6280		410	389	488	436		15208	14436
Lexmark X4850	258				214			

* Kodak's cartridge in includes black ink and protective ink

	Photo Ink yield							
	CMY	C	M	Y	K1	K2	LC	LM
Kodak 5100	167				1695			
Kodak 5300	167				1663			
Kodak 5500	166				1472			
Kodak ESP-3	173				1509			
Kodak ESP-5	172				1371			
Brother DCP-130C		137	144	151	3673			
Brother MFC-240C		154	152	170	3595			
Canon MP220	78				932			
Canon MP610		378	277	350	2410	1074		
Canon MX700		363	240	272	2967			
Epson DX6000		99	96	122	802			
Epson DX9400F		85	86	114	471			
Epson RX560		370	249	182	317		100	118
Epson Stylus Photo RX685		414	312	209	472		105	117
Hewlett-Packard C4280	45				1002			
Hewlett-Packard C5180		303	327	148	602		134	134
Hewlett-Packard C5280	43				1296			
Hewlett-Packard C6280		295	318	148	519		137	126
Lexmark X4850	56				3262			

* Kodak's cartridge in includes black ink and protective ink

Test results and cost information provided by QualityLogic. Tests were performed under laboratory conditions and end-user's results may vary. Test results, ink cartridge pricing and cost per page pricing subject to change without notice by QualityLogic. All test results and cost information are provided "as-is," "as available," and all warranties, expressed or implied are hereby disclaimed. Users of the information contained herein assume full responsibility and risk of loss resulting from usage thereof.

B. Ink Cartridge Pricing

Cartridge prices used in this Cost of Ink Per Page analysis were researched and provided for QualityLogic by IDC as of May 2008. IDC's methodology for data collection used the manufacturer's website for each country (Kodak cartridge pricing was provided by Kodak). Pricing shown includes country-wide taxes (IVA) and only standard as-shipped-in-box cartridges or the standard-yield ink cartridges in single quantity pricing (i.e. no multi-packs, high yield, combo packs, value packs or special promotions) were evaluated for the purpose of making like-basis comparisons between all printers. Below is the summary of the ink cartridges and their individual prices:

	Ink Cartridge Pricing							
	CMY	C	M	Y	K1	K2	LC	LM
Kodak 5100	€ 14.99				€ 9.99			
Kodak 5300	€ 14.99				€ 9.99			
Kodak 5500	€ 14.99				€ 9.99			
Kodak ESP-3	€ 14.99				€ 9.99			
Kodak ESP-5	€ 14.99				€ 9.99			
Brother DCP-130C		€ 16.90	€ 16.90	€ 16.90	€ 23.50			
Brother MFC-240C		€ 16.90	€ 16.90	€ 16.90	€ 23.50			
Canon MP220	€ 22.00				€ 16.50			
Canon MP610		€ 16.90	€ 16.90	€ 16.90	€ 20.00	€ 19.20		
Canon MX700		€ 16.90	€ 16.90	€ 16.90	€ 20.00			
Epson DX6000		€ 9.98	€ 9.98	€ 9.98	€ 9.98			
Epson DX9400F		€ 9.98	€ 9.98	€ 9.98	€ 9.98			
Epson RX560		€ 9.98	€ 9.98	€ 9.98	€ 9.98		€ 9.98	€ 9.98
Epson RX685		€ 9.98	€ 9.98	€ 9.98	€ 9.98		€ 9.98	€ 9.98
Hewlett-Packard C4280	€ 17.00				€ 14.00			
Hewlett-Packard C5180		€ 9.00	€ 9.00	€ 9.00	€ 15.00		€ 9.00	€ 9.00
Hewlett-Packard C5280	€ 17.00				€ 14.00			
Hewlett-Packard C6280		€ 9.00	€ 9.00	€ 9.00	€ 15.00		€ 9.00	€ 9.00
Lexmark X4850	€ 30.59				€ 24.21			

Currency: Italy -includes IVA, Source: Kodak for Kodak and IDC for all others

C. Cost of Ink Per Page – Per Cartridge

QualityLogic then calculated the Cost of Ink Per Page per cartridge by dividing the price of each cartridge (as defined by IDC’s localized cartridge price, noted above in Section B) by the yield for each cartridge in each model (as defined above in Section A). This calculation results in the Cost of Ink Per Page per cartridge for each test mode: mono, color and photo.

$$\frac{\text{Price per cartridge}}{\text{Ink yield (in number of pages/photos)}} = \text{Cost of Ink Per Page – per cartridge}$$

Cost of Ink Per Individual Cartridge Per Page

	Mono Ink Cost							
	CMY	C	M	Y	K1	K2	LC	LM
Kodak 5100	€ 0.004				€ 0.019			
Kodak 5300	€ 0.004				€ 0.019			
Kodak 5500	€ 0.004				€ 0.019			
Kodak ESP-3	€ 0.003				€ 0.018			
Kodak ESP-5	€ 0.003				€ 0.018			
Brother DCP-130C		€ 0.002	€ 0.002	€ 0.002	€ 0.044			
Brother MFC-240C		€ 0.002	€ 0.002	€ 0.002	€ 0.043			
Canon MP220	€ 0.016				€ 0.067			
Canon MP610		€ 0.003	€ 0.003	€ 0.002	€ 0.038	€ 0.002		
Canon MX700		€ 0.002	€ 0.003	€ 0.002	€ 0.040			
Epson DX6000		€ 0.009	€ 0.006	€ 0.006	€ 0.033			
Epson DX9400F		€ 0.006	€ 0.004	€ 0.004	€ 0.041			
Epson RX560		€ 0.003	€ 0.003	€ 0.003	€ 0.029		€ 0.004	€ 0.004
Epson RX685		€ 0.003	€ 0.004	€ 0.002	€ 0.026		€ 0.003	€ 0.003
Hewlett-Packard C4280	€ 0.016				€ 0.069			
Hewlett-Packard C5180		€ 0.003	€ 0.006	€ 0.004	€ 0.037		€ 0.001	€ 0.001
Hewlett-Packard C5280	€ 0.019				€ 0.065			
Hewlett-Packard C6280		€ 0.007	€ 0.012	€ 0.007	€ 0.017		€ 0.001	€ 0.001
Lexmark X4850	€ 0.011				€ 0.109			

Test results and cost information provided by QualityLogic. Tests were performed under laboratory conditions and end-user's results may vary. Test results, ink cartridge pricing and cost per page pricing subject to change without notice by QualityLogic. All test results and cost information are provided "as-is," "as available," and all warranties, expressed or implied are hereby disclaimed. Users of the information contained herein assume full responsibility and risk of loss resulting from usage thereof.

Cost of Ink Per Individual Cartridge Per Page

	Color Ink cost							
	CMY	C	M	Y	K1	K2	LC	LM
Kodak 5100	€ 0.040				€ 0.029			
Kodak 5300	€ 0.040				€ 0.029			
Kodak 5500	€ 0.040				€ 0.029			
Kodak ESP-3	€ 0.040				€ 0.029			
Kodak ESP-5	€ 0.040				€ 0.029			
Brother DCP-130C		€ 0.025	€ 0.032	€ 0.025	€ 0.045			
Brother MFC-240C		€ 0.023	€ 0.026	€ 0.021	€ 0.043			
Canon MP220	€ 0.104				€ 0.071			
Canon MP610		€ 0.019	€ 0.025	€ 0.024	€ 0.041	€ 0.004		
Canon MX700		€ 0.018	€ 0.025	€ 0.024	€ 0.041			
Epson DX6000		€ 0.023	€ 0.036	€ 0.023	€ 0.041			
Epson DX9400F		€ 0.026	€ 0.035	€ 0.025	€ 0.042			
Epson RX560		€ 0.010	€ 0.020	€ 0.020	€ 0.031		€ 0.022	€ 0.015
Epson RX685		€ 0.010	€ 0.020	€ 0.017	€ 0.028		€ 0.026	€ 0.013
Hewlett-Packard C4280	€ 0.109				€ 0.071			
Hewlett-Packard C5180		€ 0.023	€ 0.023	€ 0.019	€ 0.032		€ 0.001	€ 0.001
Hewlett-Packard C5280	€ 0.121				€ 0.071			
Hewlett-Packard C6280		€ 0.022	€ 0.023	€ 0.018	€ 0.034		€ 0.001	€ 0.001
Lexmark X4850	€ 0.119				€ 0.113			

	Photo Ink Cost							
	CMY	C	M	Y	K1	K2	LC	LM
Kodak 5100	€ 0.090				€ 0.006			
Kodak 5300	€ 0.090				€ 0.006			
Kodak 5500	€ 0.090				€ 0.007			
Kodak ESP-3	€ 0.087				€ 0.007			
Kodak ESP-5	€ 0.087				€ 0.007			
Brother DCP-130C		€ 0.123	€ 0.117	€ 0.112	€ 0.006			
Brother MFC-240C		€ 0.110	€ 0.111	€ 0.099	€ 0.007			
Canon MP220	€ 0.282				€ 0.018			
Canon MP610		€ 0.045	€ 0.061	€ 0.048	€ 0.008	€ 0.018		
Canon MX700		€ 0.047	€ 0.070	€ 0.062	€ 0.007			
Epson DX6000		€ 0.101	€ 0.104	€ 0.082	€ 0.012			
Epson DX9400F		€ 0.117	€ 0.116	€ 0.088	€ 0.021			
Epson RX560		€ 0.027	€ 0.040	€ 0.055	€ 0.031		€ 0.100	€ 0.085
Epson RX685		€ 0.024	€ 0.032	€ 0.048	€ 0.021		€ 0.095	€ 0.085
Hewlett-Packard C4280	€ 0.378				€ 0.014			
Hewlett-Packard C5180		€ 0.030	€ 0.028	€ 0.061	€ 0.025		€ 0.067	€ 0.067
Hewlett-Packard C5280	€ 0.395				€ 0.011			
Hewlett-Packard C6280		€ 0.031	€ 0.028	€ 0.061	€ 0.029		€ 0.066	€ 0.071
Lexmark X4850	€ 0.546				€ 0.007			

Test results and cost information provided by QualityLogic. Tests were performed under laboratory conditions and end-user's results may vary. Test results, ink cartridge pricing and cost per page pricing subject to change without notice by QualityLogic. All test results and cost information are provided "as-is," "as available," and all warranties, expressed or implied are hereby disclaimed. Users of the information contained herein assume full responsibility and risk of loss resulting from usage thereof.

D. Cost of Ink Per Page

Cost of Ink Per Page for each printer is calculated by summing the Cost of Ink Per Page per cartridge for each cartridge tested in a given printer model (as determined above in Section C).

$$\text{Cost of Ink Per Page} = \text{CMY} + \text{C} + \text{M} + \text{Y} + \text{K1} + \text{K2} + \text{LC} + \text{LM}$$

The Cost of Ink Per Page per printer is reflected below. Note that, due to rounding, the total CoIPP may not match the individual ink cartridge costs.

Cost of Ink Per individual Cartridge and total Cost of Ink Per Page

	Mono Ink Cost								Mono CoIPP
	CMY	C	M	Y	K1	K2	LC	LM	
Kodak 5100	€ 0.004				€ 0.019				€ 0.023
Kodak 5300	€ 0.004				€ 0.019				€ 0.023
Kodak 5500	€ 0.004				€ 0.019				€ 0.023
Kodak ESP-3	€ 0.003				€ 0.018				€ 0.021
Kodak ESP-5	€ 0.003				€ 0.018				€ 0.022
Brother DCP-130C		€ 0.002	€ 0.002	€ 0.002	€ 0.044				€ 0.050
Brother MFC-240C		€ 0.002	€ 0.002	€ 0.002	€ 0.043				€ 0.050
Canon MP220	€ 0.016				€ 0.067				€ 0.083
Canon MP610		€ 0.003	€ 0.003	€ 0.002	€ 0.038	€ 0.002			€ 0.049
Canon MX700		€ 0.002	€ 0.003	€ 0.002	€ 0.040				€ 0.047
Epson DX6000		€ 0.009	€ 0.006	€ 0.006	€ 0.033				€ 0.053
Epson DX9400F		€ 0.006	€ 0.004	€ 0.004	€ 0.041				€ 0.056
Epson RX560		€ 0.003	€ 0.003	€ 0.003	€ 0.029		€ 0.004	€ 0.004	€ 0.046
Epson RX685		€ 0.003	€ 0.004	€ 0.002	€ 0.026		€ 0.003	€ 0.003	€ 0.041
Hewlett-Packard C4280	€ 0.016				€ 0.069				€ 0.086
Hewlett-Packard C5180		€ 0.003	€ 0.006	€ 0.004	€ 0.037		€ 0.001	€ 0.001	€ 0.051
Hewlett-Packard C5280	€ 0.019				€ 0.065				€ 0.084
Hewlett-Packard C6280		€ 0.007	€ 0.012	€ 0.007	€ 0.017		€ 0.001	€ 0.001	€ 0.044
Lexmark X4850	€ 0.011				€ 0.109				€ 0.120

Cost of Ink Per Individual Cartridge and Total Cost of Ink Per Page

Italy

	Color Ink cost								Color
	CMY	C	M	Y	K1	K2	LC	LM	CoIPP
Kodak 5100	€ 0.040				€ 0.029				€ 0.069
Kodak 5300	€ 0.040				€ 0.029				€ 0.069
Kodak 5500	€ 0.040				€ 0.029				€ 0.069
Kodak ESP-3	€ 0.040				€ 0.029				€ 0.069
Kodak ESP-5	€ 0.040				€ 0.029				€ 0.069
Brother DCP-130C		€ 0.025	€ 0.032	€ 0.025	€ 0.045				€ 0.128
Brother MFC-240C		€ 0.023	€ 0.026	€ 0.021	€ 0.043				€ 0.113
Canon MP220	€ 0.104				€ 0.071				€ 0.174
Canon MP610		€ 0.019	€ 0.025	€ 0.024	€ 0.041	€ 0.004			€ 0.112
Canon MX700		€ 0.018	€ 0.025	€ 0.024	€ 0.041				€ 0.108
Epson DX6000		€ 0.023	€ 0.036	€ 0.023	€ 0.041				€ 0.123
Epson DX9400F		€ 0.026	€ 0.035	€ 0.025	€ 0.042				€ 0.129
Epson RX560		€ 0.010	€ 0.020	€ 0.020	€ 0.031		€ 0.022	€ 0.015	€ 0.118
Epson RX685		€ 0.010	€ 0.020	€ 0.017	€ 0.028		€ 0.026	€ 0.013	€ 0.115
Hewlett-Packard C4280	€ 0.109				€ 0.071				€ 0.180
Hewlett-Packard C5180		€ 0.023	€ 0.023	€ 0.019	€ 0.032		€ 0.001	€ 0.001	€ 0.098
Hewlett-Packard C5280	€ 0.121				€ 0.071				€ 0.191
Hewlett-Packard C6280		€ 0.022	€ 0.023	€ 0.018	€ 0.034		€ 0.001	€ 0.001	€ 0.099
Lexmark X4850	€ 0.119				€ 0.113				€ 0.232

	Photo Ink Cost								Photo
	CMY	C	M	Y	K1	K2	LC	LM	CoIPP
Kodak 5100	€ 0.090				€ 0.006				€ 0.096
Kodak 5300	€ 0.090				€ 0.006				€ 0.096
Kodak 5500	€ 0.090				€ 0.007				€ 0.097
Kodak ESP-3	€ 0.087				€ 0.007				€ 0.093
Kodak ESP-5	€ 0.087				€ 0.007				€ 0.094
Brother DCP-130C		€ 0.123	€ 0.117	€ 0.112	€ 0.006				€ 0.359
Brother MFC-240C		€ 0.110	€ 0.111	€ 0.099	€ 0.007				€ 0.327
Canon MP220	€ 0.282				€ 0.018				€ 0.300
Canon MP610		€ 0.045	€ 0.061	€ 0.048	€ 0.008	€ 0.018			€ 0.180
Canon MX700		€ 0.047	€ 0.070	€ 0.062	€ 0.007				€ 0.186
Epson DX6000		€ 0.101	€ 0.104	€ 0.082	€ 0.012				€ 0.299
Epson DX9400F		€ 0.117	€ 0.116	€ 0.088	€ 0.021				€ 0.342
Epson RX560		€ 0.027	€ 0.040	€ 0.055	€ 0.031		€ 0.100	€ 0.085	€ 0.338
Epson RX685		€ 0.024	€ 0.032	€ 0.048	€ 0.021		€ 0.095	€ 0.085	€ 0.305
Hewlett-Packard C4280	€ 0.378				€ 0.014				€ 0.392
Hewlett-Packard C5180		€ 0.030	€ 0.028	€ 0.061	€ 0.025		€ 0.067	€ 0.067	€ 0.277
Hewlett-Packard C5280	€ 0.395				€ 0.011				€ 0.406
Hewlett-Packard C6280		€ 0.031	€ 0.028	€ 0.061	€ 0.029		€ 0.066	€ 0.071	€ 0.286
Lexmark X4850	€ 0.546				€ 0.007				€ 0.554

Contact Information

For information regarding this Cost of Ink Per Page Analysis, please contact the following person/s:

QualityLogic:



Dave Jollota
President, Imaging Test Solutions Group
Phone: +1-805-531-9030 x122
djollota@qualitylogic.com

Don Moreaux
Director of Operations, Testing Services
Phone: +1-208-424-1905 x3051
dmoreaux@qualitylogic.com
Address: 5401 Tech Circle, Moorpark, CA, 93021-1793 USA

IDC:



Brian Clarke
Vice President, Pricing and Leasing Evaluation IDC
Phone: +1-508- 935-4765
Fax: +1-508-935-4015
bclarke@idc.com
Address: 5 Speen Street, Framingham, MA, 01701 USA

About IDC

IDC is the premier global provider of market intelligence, advisory services, and events for the information technology, telecommunications, and consumer technology markets. IDC helps IT professionals, business executives, and the investment community make fact-based decisions on technology purchases and business strategy. More than 900 IDC analysts provide global, regional, and local expertise on technology and industry opportunities and trends in over 90 countries worldwide. For more than 43 years, IDC has provided strategic insights to help our clients achieve their key business objectives. IDC is a subsidiary of IDG, the world's leading technology media, research, and events company. You can learn more about IDC by visiting www.idc.com.

Appendix A: QualityLogic Declared Yield Test Results

The following data was extracted from the Yield Reports for each product tested. Complete reports are available from QualityLogic upon request.

ISO Test Results - Summary

Test Methodology

In order to obtain these yield results, two different methodologies were used in combination with three test suites. This section will detail the common areas between the methodologies, the differences between them, and highlight some key terms from ISO/IEC 24711, 24712, and 19752 that are particularly important to understand when reviewing these yield claims.

Common Methodology and Definitions

Number of Printers Tested	Minimum of three
Number of Cartridges Tested	Minimum of nine of each color
Temperature	Testing room average 23.0°C ± 2°C with all running average temperatures between 20.0°C and 26.0°C
Humidity	Testing room average 50% ± 10% RH with all running average RH readings between 35% and 65%
Fade	Phenomenon in which a significant reduction in uniformity occurs due to ink depletion
Ink Out	Signal generated by the printing system when the usable ink in the system is depleted and the printer stops printing
End of Life (EOL)	A condition determined by one of two mechanisms: fade or ink out (only if ink out stops printing)
Semi-Continuous Printing	Printing in a continuous manner, pausing only for intra-job servicing, printer calibrations, paper changes, breaks, and end of work days
Declared Cartridge Yield	Cartridge Yield (in pages) that is at or below the lower 90% confidence bound of the average yield
Estimated Supplemental Cartridge Yield	Estimated yield for a supplemental cartridge (real or estimated with use of a proxy) calculated with at least three cartridges
Average Supplemental Cartridge Yield	Average yield for a supplemental cartridge where EOL was reached on at least nine cartridges (three per printer)
Proxy Cartridge	A primary cartridge of the same physical size as a supplemental cartridge which had a starting weight within +/- 10% of the supplemental cartridge starting weight.

**Mono Ink Methodology and Definitions –
In accordance with ISO/IEC 24711, ISO/IEC 19752**

Test Suite	ISO/IEC 19752
Driver Set-up*	See Color Ink Methodology. In addition, if a "Black Only" or "Text Only" mode was available in the driver, it was enabled.
Paper	A4 or 8 ½" x 11" (see individual test reports)
Semi-Continuous Printing	Each copy of the test suite was printed as a separate one-page print job allowing for some intra-job servicing and calibration to take place
Primary Cartridge	The black cartridge or, if no black cartridge was present, the color cartridges that were used to develop composite black.
Supplemental Cartridge	Any installed cartridge except the full density black cartridge, including the full density Cyan, Magenta, and Yellow cartridges, as well as any photo cartridges
Individual Cartridge Yield	The number of test pages printed between cartridge installation and end of life

**Color Ink Methodology and Definitions –
In accordance with ISO/IEC 24711, ISO IEC 24712**

Test Suite	ISO/IEC 24712
Driver Set-up*	All image and print quality modifiers were set to their factory pre-set configuration for the printer and default installed condition for the driver. If auto media detection was available on the printer, it was disabled and media-type set to plain paper.
Paper	A4 or 8 ½" by 11" (see individual test reports)
Semi-Continuous Printing	Each copy of the test suite was printed as a separate five-page print job allowing for some intra-job servicing and calibration to take place
Primary Cartridge	Cartridge containing full density black, cyan, magenta, or yellow, or a combination of full density cyan, magenta and yellow.
Supplemental Cartridge	Cartridge other than the full density cyan, magenta, yellow and black cartridges
Individual Cartridge Yield	Value determined by counting the number of diagnostic pages (last page of the test page suite) printed between cartridge installation and end of life, and multiplying by five

**Photo Ink Methodology and Definitions –
In accordance with QualityLogic Color Photo Cartridge Yield Test Methodology**

Test Suite	QualityLogic Color Photo Suite
Driver Set-up*	The highest print quality mode readily available in the driver was used
Paper	The best photo paper recommended by each manufacturer. A4 or 8 ½" x 11" papers were used to print a borderless 4" x 6" (approximately 10 x 15 cm) photo. (See individual test reports)
Semi-Continuous Printing	Each copy of the test suite was printed as a separate 10-page print job allowing for some intra-job servicing and calibration to take place
Primary Cartridge	Cyan, Magenta, Yellow and Photo cartridges or any cartridges containing these colors were considered as primary cartridges. In addition, any other cartridge that exhausted nine or more cartridges during the execution of nine of the above cartridges was considered as primary.
Supplemental Cartridge	Any cartridge installed in the printer while printing photos that did not meet the definition of a primary cartridge was considered a supplemental cartridge
Individual Cartridge Yield	The number of test pages printed between cartridge installation and end of life

Detailed Test Results

The following data was extracted from the Yield Reports for each product tested – complete reports are available upon request.

Printer Identifier	Kodak EASYSHARE 5100
Printer Manufacturer	Kodak
Cartridge Identifier	Black Ink Cartridge 10 & Color Ink Cartridge 10
Cartridge Type	Separate ink supply and print head
Date Tested	April 18, 2007 to April 24, 2007
EOL Criteria	This printer has Ink Out which stops printing. Whichever came first, either Ink Out or Fade, was used as the EOL criteria.
Print mode used	Continuous
Paper Size	Letter
Media used	Xerox Business 4200, 92 Brightness, 20lb. weight
Driver version	Driver Version = 04/03/2007,2.5.119.0 The following driver settings were used: Print Quality = Normal Paper Size = Letter Using the 19752 Mono test page, the setting in the Advanced Tab "Print Colors as: Black and White" was selected.

Declaration of Yield

Inkjet Cartridge Yield when tested in Kodak EASYSHARE 5100:

Using the test suite defined in ISO/IEC 24712 provides the following results:

Average K (Black) Cartridge Yield – Up to 342 standard pages

Average Color Cartridge Yield – Up to 378 standard pages

Using the test page defined in ISO/IEC 19752 provides the following results:

Average K (Black) Cartridge Yield – Up to 537 standard pages

Estimated supplemental Color Cartridge Yield – Up to 3,747 standard pages

Values obtained by continuous printing. Declared yield values in accordance with ISO/IEC 24711

ISO 24712

Cartridge Identifier	Color	Average (pages)	90% Lower Confidence (pages)	Number used in calculations/test
Black Ink Cartridge 10	K (Black)	347	342	9/12
Color Ink Cartridge 10	Color	385	378	9/9

ISO 19752

Cartridge Identifier	Color	Average (pages)	90% Lower Confidence (pages)	Number used in calculations/test
Black Ink Cartridge 10	K (Black)	539	537	21/21
Color Ink Cartridge 10*	Color	3,773	3,747	3/3

* Denotes supplemental cartridge

Printer Identifier	Kodak EASYSHARE 5100
Printer Manufacturer	Kodak
Cartridge Identifier	Black Ink Cartridge 10 & Color Ink Cartridge 10
Cartridge Type	Separate ink supply and print head
Date Tested	May 4, 2007
EOL Criteria	This printer has Ink Out which stops printing. Whichever came first, either Ink Out or Fade, was used as the EOL criteria.
Print mode used	Continuous
Paper Size	4" x 6" borderless photo on 8 ½" x 11" photo paper
Media used	Ultra Premium Photo Paper - Kodak
Driver version	Driver Version = 04/03/2007,2.5.119.0 The following driver settings were used: Print Quality = Normal Paper Size = Letter No settings were available in the driver for Photo printing.

Declaration of Yield

Inkjet Cartridge Yield when tested in Kodak EASYSHARE 5100:

Using the QualityLogic Color Photo test suite provides the following results:

Average Color Cartridge Yield – Up to 167 standard pages

Estimated supplemental K (Black) Cartridge Yield – Up to 1,695 standard pages

Values obtained by continuous printing. Declared yield values in accordance with QualityLogic Color Photo Yield Test Methodology

QualityLogic Color Photo Suite

Cartridge Identifier	Color	Average (pages)	90% Lower Confidence (pages)	Number used in calculations/test
Color Ink Cartridge 10	Color	167	167	9/9
Black Ink Cartridge 10*	K (Black)	1,730	1,695	3/3

* Denotes supplemental cartridge

Printer Identifier	Kodak EASYSHARE 5300
Printer Manufacturer	Kodak
Cartridge Identifier	Black Ink Cartridge 10 & Color Ink Cartridge 10
Cartridge Type	Separate ink supply and print head
Date Tested	April 18, 2007 to April 24, 2007
EOL Criteria	This printer has Ink Out which stops printing. Whichever came first, either Ink Out or Fade, was used as the EOL criteria.
Print mode used	Continuous
Paper Size	Letter
Media used	Xerox Business 4200, 92 Brightness, 20lb. weight
Driver version	Driver Version = 04/03/2007,2.5.119.0 The following driver settings were used: Print Quality = Normal Paper Size = Letter Using the 19752 Mono test page, the setting in the Advanced Tab "Print Colors as: Black and White" was selected.

Declaration of Yield

Inkjet Cartridge Yield when tested in Kodak EASYSHARE 5300:

Using the test suite defined in ISO/IEC 24712 provides the following results:

Average K (Black) Cartridge Yield: Up to 342 standard pages

Average Color Cartridge Yield: Up to 378 standard pages

Using the test page defined in ISO/IEC 19752 provides the following results:

Average K (Black) Cartridge Yield: Up to 536 standard pages

Estimated supplemental Color Cartridge Yield: Up to 3,753 standard pages

Values obtained by continuous printing. Declared yield value in accordance with ISO/IEC 24711.

ISO 24712

Cartridge Identifier	Color	Average (pages)	90% Lower Confidence (pages)	Number used in calculations/test
Black Ink Cartridge 10	K (Black)	347	342	9/12
Color Ink Cartridge 10	Color	385	378	9/9

ISO 19752

Cartridge Identifier	Color	Average (pages)	90% Lower Confidence (pages)	Number used in calculations/test
Black Ink Cartridge 10	K (Black)	537	536	21/21
Color Ink Cartridge 10*	Color	3,758	3,753	3/3

* Denotes supplemental cartridge

Printer Identifier	Kodak EASYSHARE 5300
Printer Manufacturer	Kodak
Cartridge Identifier	Black Ink Cartridge 10 & Color Ink Cartridge 10
Cartridge Type	Separate ink supply and print head
Date Tested	May 3, 2007 to May 4, 2007
EOL Criteria	This printer has Ink Out which stops printing. Whichever came first, either Ink Out or Fade, was used as the EOL criteria.
Print mode used	Continuous
Paper Size	4" x 6" borderless photo on 8 ½" x 11" photo paper
Media used	Ultra Premium Photo Paper - Kodak
Driver version	Driver Version = 04/03/2007,2.5.119.0 The following driver settings were used: Print Quality = Normal Paper Size = Letter No settings were available in the driver for Photo printing.

Declaration of Yield

Inkjet Cartridge Yield when tested in Kodak EASYSHARE 5300:

Using the QualityLogic Color Photo Suite:

Average Color Cartridge Yield: Up to 167 standard pages

Estimated supplemental K (Black) Cartridge Yield: Up to 1663 standard pages

Values obtained by continuous printing. Declared yield value in accordance with QualityLogic Color Photo Cartridge Yield Test Methodology.

QualityLogic Color Photo Suite

Cartridge Identifier	Color	Average (pages)	90% Lower Confidence (pages)	Number used in calculations/test
Color Ink Cartridge 10	Color	167	167	9/9
Black Ink Cartridge 10*	K (Black)	1,911	1,663	3/3

* Denotes supplemental cartridge

Printer Identifier	Kodak EASYSHARE 5500
Printer Manufacturer	Kodak
Cartridge Identifier	Black Ink Cartridge 10 & Color Ink Cartridge 10
Cartridge Type	Separate ink supply and print head
Date Tested	July 10, 2007 to July 19, 2007
EOL Criteria	This printer has Ink Out which stops printing. Whichever came first, either Ink Out or Fade, was used as the EOL criteria.
Print mode used	Continuous
Paper Size	Letter
Media used	Xerox Business 4200, 92 Brightness, 20lb. weight
Driver version	Driver Version = 04/03/2007,2.5.119.0 The following driver settings were used: Print Quality = Normal Paper Size = Letter Using the 19752 Mono test page, the setting in the Advanced Tab "Print Colors as: Black and White" was selected.

Declaration of Yield

Inkjet Cartridge Yield when tested in Kodak EASYSHARE 5500:

Using the test suite defined in ISO/IEC 24712 provides the following results:

Average K (Black) Cartridge Yield: Up to 342 standard pages

Average Color Cartridge Yield: Up to 376 standard pages

Using the test page defined in ISO/IEC 19752 provides the following results:

Average K (Black) Cartridge Yield: Up to 535 standard pages

Estimated supplemental Color Cartridge Yield: Up to 3,741 standard pages

Values obtained by continuous printing. Declared yield value in accordance with ISO/IEC 24711.

ISO 24712

Cartridge Identifier	Color	Average (pages)	90% Lower Confidence (pages)	Number used in calculations/test
Black Ink Cartridge 10	K (Black)	346	342	9/15
Color Ink Cartridge 10	Color	383	376	9/12

ISO 19752

Cartridge Identifier	Color	Average (pages)	90% Lower Confidence (pages)	Number used in calculations/test
Black Ink Cartridge 10	K (Black)	536	535	21/21
Color Ink Cartridge 10*	Color	3,755	3,741	3/3

* Denotes supplemental cartridge

Printer Identifier	Kodak EASYSHARE 5500
Printer Manufacturer	Kodak
Cartridge Identifier	Black Ink Cartridge 10 & Color Ink Cartridge 10
Cartridge Type	Separate ink supply and print head
Date Tested	July 19, 2007 to July 20, 2007
EOL Criteria	This printer has Ink Out which stops printing. Whichever came first, either Ink Out or Fade, was used as the EOL criteria.
Print mode used	Continuous
Paper Size	4" x 6" borderless photo on 8 ½" x 11" photo paper
Media used	Ultra Premium Photo Paper - Kodak
Driver version	Driver Version = 04/03/2007,2.5.119.0 The following driver settings were used: Print Quality = Normal Paper Size = Letter No settings were available in the driver for Photo printing.

Declaration of Yield

Inkjet Cartridge Yield when tested in Kodak EASYSHARE 5500:

Using the QualityLogic Color Photo Suite:

Average Color Cartridge Yield: Up to 166 standard pages

Estimated supplemental K (Black) Cartridge Yield: Up to 1472 standard pages

Values obtained by continuous printing. Declared yield value in accordance with QualityLogic Color Photo Cartridge Yield Test Methodology.

QualityLogic Color Photo Suite

Cartridge Identifier	Color	Average (pages)	90% Lower Confidence (pages)	Number used in calculations/test
Color Ink Cartridge 10	Color	167	166	9/9
Black Ink Cartridge 10*	K (Black)	1,700	1,472	3/3

* Denotes supplemental cartridge

Printer Identifier	ESP-3 All-in-One Printer
Printer Manufacturer	Kodak
Cartridge Identifier	Black Ink Cartridge 10 & Color Ink Cartridge 10
Cartridge Type	Separate ink supply and print head
Date Tested	September 10, 2008 to September 22, 2008
EOL Criteria	This printer has Ink Out which stops printing. Whichever came first, either Ink Out or Fade, was used as the EOL criteria.
Print mode used	Continuous
Paper Size	Letter
Media used	Xerox Business 4200, 92 Brightness, 20lb. weight
Driver version	Driver Version=07/17/2008, 2.07.0151.0 Color Ink test: The driver's default settings were used. Mono Ink Test: Print color as = Changed to Black and White from Color

Declaration of Yield

Inkjet Cartridge Yield when tested in Kodak ESP-3 All-in-One Printer::

Using the test suite defined in ISO/IEC 24712 provides the following results:

- Average K (Black) Cartridge Yield – Up to 340 standard pages
- Average Color Cartridge Yield – Up to 379 standard pages

Using the test page defined in ISO/IEC 19752 provides the following results:

- Average K (Black) Cartridge Yield – Up to 555 standard pages
- Estimated supplemental Color Cartridge Yield – Up to 4,313 standard pages

Values obtained by continuous printing. Declared yield values in accordance with ISO/IEC 24711

ISO 24712

Cartridge Identifier	Color	Average (pages)	90% Lower Confidence (pages)	Number used in calculations/test
Black Ink Cartridge 10	K (Black)	345	340	9/12
Color Ink Cartridge 10	Color	386	379	9/9

ISO 19752

Cartridge Identifier	Color	Average (pages)	90% Lower Confidence (pages)	Number used in calculations/test
Black Ink Cartridge 10	K (Black)	557	555	24/24
Color Ink Cartridge 10*	Color	4,758	4,313	3/3

* Denotes supplemental cartridge

Printer Identifier	ESP-3 All-in-One Printer
Printer Manufacturer	Kodak
Cartridge Identifier	Black Ink Cartridge 10 & Color Ink Cartridge 10
Cartridge Type	Separate ink supply and print head
Date Tested	September 10, 2008 to September 22, 2008
EOL Criteria	This printer has Ink Out which stops printing. Whichever came first, either Ink Out or Fade, was used as the EOL criteria.
Print mode used	Continuous
Paper Size	4" x 6" borderless photo on 8 ½" x 11" photo paper
Media used	KODAK Ultra Premium Photo Paper High Gloss
Driver version	Driver Version=07/17/2008, 2.07.0151.0 The driver's default settings were used.

Declaration of Yield

Inkjet Cartridge Yield when tested in Kodak ESP-3 All-in-One Printer:

Using the QualityLogic Color Photo test suite provides the following results:

Average Color Cartridge Yield – Up to 173 standard pages

Estimated supplemental K (Black) Cartridge Yield – Up to 1,509 standard pages

Values obtained by continuous printing. Declared yield values in accordance with QualityLogic Color Photo Yield Test Methodology

QualityLogic Color Photo Suite

Cartridge Identifier	Color	Average (pages)	90% Lower Confidence (pages)	Number used in calculations/test
Color Ink Cartridge 10	Color	173	173	9/9
Black Ink Cartridge 10*	K (Black)	1,719	1,509	3/3

* Denotes supplemental cartridge

Test results and cost information provided by QualityLogic. Tests were performed under laboratory conditions and end-user's results may vary. Test results, ink cartridge pricing and cost per page pricing subject to change without notice by QualityLogic. All test results and cost information are provided "as-is," "as available," and all warranties, expressed or implied are hereby disclaimed. Users of the information contained herein assume full responsibility and risk of loss resulting from usage thereof.

Printer Identifier	ESP-5 All-in-One Printer
Printer Manufacturer	Kodak
Cartridge Identifier	Black Ink Cartridge 10 & Color Ink Cartridge 10
Cartridge Type	Separate ink supply and print head
Date Tested	August 25, 2008 to September 4, 2008
EOL Criteria	This printer has Ink Out which stops printing. Whichever came first, either Ink Out or Fade, was used as the EOL criteria.
Print mode used	Continuous
Paper Size	Letter
Media used	Xerox Business 4200, 92 Brightness, 20lb. weight
Driver version	Driver Version=07/17/2008, 2.07.0151.0 Color Ink test: The driver's default settings were used. Mono Ink Test: Print color as = Changed to Black and White from Color

Declaration of Yield

Inkjet Cartridge Yield when tested in Kodak ESP-5 All-in-One Printer:

Using the test suite defined in ISO/IEC 24712 provides the following results:

Average K (Black) Cartridge Yield – Up to 342 standard pages

Average Color Cartridge Yield – Up to 379 standard pages

Using the test page defined in ISO/IEC 19752 provides the following results:

Average K (Black) Cartridge Yield – Up to 551 standard pages

Estimated supplemental Color Cartridge Yield – Up to 4,395 standard pages

Values obtained by continuous printing. Declared yield values in accordance with ISO/IEC 24711

ISO 24712

Cartridge Identifier	Color	Average (pages)	90% Lower Confidence (pages)	Number used in calculations/test
Black Ink Cartridge 10	K (Black)	347	342	9/12
Color Ink Cartridge 10	Color	387	379	9/9

ISO 19752

Cartridge Identifier	Color	Average (pages)	90% Lower Confidence (pages)	Number used in calculations/test
Black Ink Cartridge 10	K (Black)	552	551	24/24
Color Ink Cartridge 10*	Color	4,415	4,395	3/3

* Denotes supplemental cartridge

Printer Identifier	ESP-5 All-in-One Printer
Printer Manufacturer	Kodak
Cartridge Identifier	Black Ink Cartridge 10 & Color Ink Cartridge 10
Cartridge Type	Separate ink supply and print head
Date Tested	September 4, 2008 to September 8, 2008
EOL Criteria	This printer has Ink Out which stops printing. Whichever came first, either Ink Out or Fade, was used as the EOL criteria.
Print mode used	Continuous
Paper Size	4" x 6" borderless photo on 8 ½" x 11" photo paper
Media used	KODAK Ultra Premium Photo Paper High Gloss
Driver version	Driver Version=07/17/2008, 2.07.0151.0 The driver's default settings were used.

Declaration of Yield

Inkjet Cartridge Yield when tested in Kodak ESP-5 All-in-One Printer:

Using the QualityLogic Color Photo test suite provides the following results:

Average Color Cartridge Yield – Up to 172 standard pages

Estimated supplemental K (Black) Cartridge Yield – Up to 1,371 standard pages

Values obtained by continuous printing. Declared yield values in accordance with QualityLogic Color Photo Yield Test Methodology

QualityLogic Color Photo Suite

Cartridge Identifier	Color	Average (pages)	90% Lower Confidence (pages)	Number used in calculations/test
Color Ink Cartridge 10	Color	173	172	9/9
Black Ink Cartridge 10*	K (Black)	1,677	1,371	3/3

* Denotes supplemental cartridge

Test results and cost information provided by QualityLogic. Tests were performed under laboratory conditions and end-user's results may vary. Test results, ink cartridge pricing and cost per page pricing subject to change without notice by QualityLogic. All test results and cost information are provided "as-is," "as available," and all warranties, expressed or implied are hereby disclaimed. Users of the information contained herein assume full responsibility and risk of loss resulting from usage thereof.

Printer Identifier	Brother DCP-130C
Printer Manufacturer	Brother
Cartridge Identifier	LC1000
Cartridge Type	Separate ink supply and print head
Date Tested	February 15, 2008 to February 21, 2008
EOL Criteria	This printer has Ink Out which stops printing. Whichever came first, either Ink Out or Fade, was used as the EOL criteria.
Print mode used	Continuous
Paper Size	A4
Media used	Hammermill Fore MP-White, 96 Brightness 20lb. weight
Driver version	Driver Version= 5.02 for Windows 2000/XP 05 Apr 2006 The following driver settings were changed from default: Paper Size = Changed to A4 from Letter

Declaration of Yield

Inkjet Cartridge Yield when tested in Brother DCP-130C:

Using the test suite defined in ISO/IEC 24712 provides the following results:

- Average K (Black) Cartridge Yield – Up to 526 standard pages
- Average Cyan Cartridge Yield – Up to 665 standard pages
- Average Yellow Cartridge Yield – Up to 676 standard pages
- Average Magenta Cartridge Yield – Up to 521 standard pages

Using the test page defined in ISO/IEC 19752 provides the following results:

- Average K (Black) Cartridge Yield – Up to 531 standard pages
- Estimated supplemental Cyan Cartridge Yield – Up to 8,613 standard pages
- Estimated supplemental Yellow Cartridge Yield – Up to 10,115 standard pages
- Estimated supplemental Magenta Cartridge Yield – Up to 10,074 standard pages

Values obtained by continuous printing. Declared yield values in accordance with ISO/IEC 24711

ISO 24712

Cartridge Identifier	Color	Average (pages)	90% Lower Confidence (pages)	Number used in calculations/test
LC1000BK	K (Black)	528	526	9/15
LC1000C	Cyan	674	665	9/15
LC1000Y	Yellow	689	676	9/12
LC1000M	Magenta	530	521	9/15

ISO 19752

Cartridge Identifier	Color	Average (pages)	90% Lower Confidence (pages)	Number used in calculations/test
LC1000BK	K (Black)	538	531	9/9
LC1000C*	Cyan	8,766	8,613	3/3
LC1000Y*	Yellow	10,272	10,115	3/3
LC1000M*	Magenta	10,331	10,074	3/3

* Denotes supplemental cartridge

Printer Identifier	Brother DCP-130C
Printer Manufacturer	Brother
Cartridge Identifier	LC1000
Cartridge Type	Separate ink supply and print head
Date Tested	February 26, 2008 to February 27, 2008
EOL Criteria	This printer has Ink Out which stops printing. Whichever came first, either Ink Out or Fade, was used as the EOL criteria.
Print mode used	Continuous
Paper Size	4" x 6" borderless photo on 210 x 297 mm photo paper
Media used	Innobella™ A4 Premium Glossy Photo Paper, BP61GLA
Driver version	Driver Version= 5.02 for Windows 2000/XP 05 Apr 2006 The following driver settings were changed from default: Size = Changed to A4 from Letter Media Type = Change to Brother Premium Glossy Photo Paper from Plain Paper

Declaration of Yield

Inkjet Cartridge Yield when tested in Brother DCP-130C:

Using the QualityLogic Color Photo test suite provides the following results:

- Average Cyan Cartridge Yield – Up to 137 standard pages
- Average Yellow Cartridge Yield – Up to 151 standard pages
- Average Magenta Cartridge Yield – Up to 144 standard pages
- Estimated supplemental K (Black) Cartridge Yield – Up to 3,673 standard pages

Values obtained by continuous printing. Declared yield values in accordance with QualityLogic Color Photo Yield Test Methodology.

QualityLogic Color Photo Suite

Cartridge Identifier	Color	Average (pages)	90% Lower Confidence (pages)	Number used in calculations/test
LC1000C	Cyan	141	137	9/12
LC1000Y	Yellow	157	151	9/9
LC1000M	Magenta	150	144	9/12
LC1000BK*	K (Black)	4,942	3,673	3/3

* Denotes supplemental cartridge

Test results and cost information provided by QualityLogic. Tests were performed under laboratory conditions and end-user's results may vary. Test results, ink cartridge pricing and cost per page pricing subject to change without notice by QualityLogic. All test results and cost information are provided "as-is," "as available," and all warranties, expressed or implied are hereby disclaimed. Users of the information contained herein assume full responsibility and risk of loss resulting from usage thereof.

Printer Identifier	Brother MFC-240C
Printer Manufacturer	Brother
Cartridge Identifier	LC-1000
Cartridge Type	Separate ink supply and print head
Date Tested	May 22, 2007 to May 30, 2007
EOL Criteria	This printer has Ink Out which stops printing. Whichever came first, either Ink Out or Fade, was used as the EOL criteria.
Print mode used	Continuous
Paper Size	A4
Media used	Hammermill Fore MP-White, 96 Brightness 20lb. weight
Driver version	Driver Version = 5.02 for Windows 2000/XP The following driver settings were used: Quality = Normal Media Type = Plain Paper Page Size = A4

Declaration of Yield

Inkjet Cartridge Yield when tested in Brother MFC-240C:

Using the test suite defined in ISO/IEC 24712 provides the following results:

- Average K (Black) Cartridge Yield – Up to 544 standard pages
- Average Cyan Cartridge Yield – Up to 734 standard pages
- Average Yellow Cartridge Yield – Up to 807 standard pages
- Average Magenta Cartridge Yield – Up to 645 standard pages

Using the test page defined in ISO/IEC 19752 provides the following results:

- Average K (Black) Cartridge Yield – Up to 545 standard pages
- Estimated supplemental Cyan Cartridge Yield Up to 7,012 standard pages
- Estimated supplemental Yellow Cartridge Yield Up to 8,253 standard pages
- Estimated supplemental Magenta Cartridge Yield Up to 8,594 standard pages

Values obtained by continuous printing. Declared yield value in accordance with ISO/IEC 24711.

ISO 24712

Cartridge Identifier	Color	Average (pages)	90% Lower Confidence (pages)	Number used in calculations/test
LC-1000BK	K (Black)	549	544	12/18
LC-1000C	Cyan	778	734	9/15
LC-1000Y	Yellow	829	807	9/12
LC-1000M	Magenta	656	645	9/15

ISO 19752

Cartridge Identifier	Color	Average (pages)	90% Lower Confidence (pages)	Number used in calculations/test
LC-1000BK	K (Black)	553	545	9/9
LC-1000C*	Cyan	7,715	7,012	3/3
LC-1000Y*	Yellow	8,797	8,253	3/3
LC-1000M*	Magenta	8,988	8,594	3/3

* Denotes supplemental cartridge

Printer Identifier	Brother MFC-240C
Printer Manufacturer	Brother
Cartridge Identifier	LC-1000
Cartridge Type	Separate ink supply and print head
Date Tested	June 8, 2007 to June 15, 2007
EOL Criteria	This printer has Ink Out which stops printing. Whichever came first, either Ink Out or Fade, was used as the EOL criteria.
Print mode used	Continuous
Paper Size	4" x 6" borderless photo on 210 x 297 mm photo paper
Media used	Innobella™ A4 Premium Glossy Photo Paper (BP61GLA)
Driver version	Driver Version = 5.02 for Windows 2000/XP The following driver settings were used: Quality = Highest Media Type = Brother Premium Glossy Photo Paper Page Size = A4

Declaration of Yield

Inkjet Cartridge Yield when tested in Brother MFC-240C:

Using the QualityLogic Color Photo Suite:

Average Cyan Cartridge Yield – Up to 154 standard pages

Average Yellow Cartridge Yield – Up to 170 standard pages

Average Magenta Cartridge Yield – Up to 152 standard pages

Estimated supplemental K (Black) Cartridge Yield – Up to 3,595 standard pages

Values obtained by continuous printing. Declared yield value in accordance with QualityLogic Color Photo Cartridge Yield Test Methodology.

QualityLogic Color Photo Suite

Cartridge Identifier	Color	Average (pages)	90% Lower Confidence (pages)	Number used in calculations/test
LC-1000C	Cyan	160	154	9/12
LC-1000Y	Yellow	177	170	9/9
LC-1000M	Magenta	160	152	9/12
LC-1000BK*	K (Black)	3,707	3,595	3/3

* Denotes supplemental cartridge

Printer Identifier	Canon PIXMA MP220
Printer Manufacturer	Canon
Cartridge Identifier	PG-37, CL-38
Cartridge Type	Integral ink supply and print head
Date Tested	February 27, 2008 to March 3, 2008
EOL Criteria	Fade was used as the EOL criteria.
Print mode used	Continuous
Paper Size	A4
Media used	Hammermill Fore MP-White, 96 Brightness 20lb. weight
Driver version	Driver Version=05/02/2007, 2.10.2.10 The following driver settings were changed from default: Size = Changed to A4 from Letter 8.5"x11"

Declaration of Yield

Inkjet Cartridge Yield when tested in Canon PIXMA MP220:

Using the test suite defined in ISO/IEC 24712 provides the following results:

Average K (Black) Cartridge Yield – Up to 234 standard pages

Average Tri-Color Cartridge Yield – Up to 212 standard pages

Using the test page defined in ISO/IEC 19752 provides the following results:

Average K (Black) Cartridge Yield – Up to 245 standard pages

Estimated supplemental Tri-Color Cartridge Yield – Up to 1,384 standard pages

Values obtained by continuous printing. Declared yield values in accordance with ISO/IEC 24711

ISO 24712

Cartridge Identifier	Color	Average (pages)	90% Lower Confidence (pages)	Number used in calculations/test
PG-37	K (Black)	242	234	9/12
CL-38	Tri-color	218	212	9/15

ISO 19752

Cartridge Identifier	Color	Average (pages)	90% Lower Confidence (pages)	Number used in calculations/test
PG-37	K (Black)	249	245	9/9
CL-38*	Tri-color	1,404	1,384	3/3

* Denotes supplemental cartridge

Test results and cost information provided by QualityLogic. Tests were performed under laboratory conditions and end-user's results may vary. Test results, ink cartridge pricing and cost per page pricing subject to change without notice by QualityLogic. All test results and cost information are provided "as-is," "as available," and all warranties, expressed or implied are hereby disclaimed. Users of the information contained herein assume full responsibility and risk of loss resulting from usage thereof.

Printer Identifier	Canon PIXMA MP220
Printer Manufacturer	Canon
Cartridge Identifier	PG-37, CL-38
Cartridge Type	Integral ink supply and print head
Date Tested	March 3, 2008 to March 4, 2008
EOL Criteria	Fade was used as the EOL criteria.
Print mode used	Continuous
Paper Size	4" x 6" borderless photo on 210 x 297 mm photo paper
Media used	Canon Photo Paper Plus Glossy A4, PP-101
Driver version	Driver Version=05/02/2007, 2.10.2.10 The following driver settings were changed from default: Media Type = Changed to Photo Paper Plus Glossy from Plain Paper Print Quality = Changed to High from Standard Size = Changed to A4 from Letter 8.5"x11"

Declaration of Yield

Inkjet Cartridge Yield when tested in Canon PIXMA MP220:

Using the QualityLogic Color Photo test suite provides the following results:

Average Tri-Color Cartridge Yield – Up to 78 standard pages

Estimated supplemental K (Black) Cartridge Yield – Up to 932 standard pages

Values obtained by continuous printing. Declared yield values in accordance with QualityLogic Color Photo Yield Test Methodology

QualityLogic Color Photo Suite

Cartridge Identifier	Color	Average (pages)	90% Lower Confidence (pages)	Number used in calculations/test
CL-38	Tri-color	79	78	9/9
PG-37*	K (Black)	942	932	3/3

* Denotes supplemental cartridge

Printer Identifier	Canon PIXMA MP610
Printer Manufacturer	Canon
Cartridge Identifier	PGI-5BK & CLI-8C, CLI-8Y, CLI-8M, CLI-8BK
Cartridge Type	Separate ink supply and print head
Date Tested	January 30, 2008 to February 13, 2008
EOL Criteria	This printer has Ink Out which stops printing. Whichever came first, either Ink Out or Fade, was used as the EOL criteria.
Print mode used	Continuous
Paper Size	A4
Media used	Hammermill Fore MP-White, 96 Brightness 20lb. weight
Driver version	Driver Version=05/30/2007, 2.10.2.40 The following driver settings were changed from default: Size = Changed to A4 from Letter

Declaration of Yield

Inkjet Cartridge Yield when tested in Canon PIXMA MP610:

Using the test suite defined in ISO/IEC 24712 provides the following results:

- Average K (Black) Cartridge Yield – Up to 492 standard pages
- Average Cyan Cartridge Yield – Up to 892 standard pages
- Average Yellow Cartridge Yield – Up to 718 standard pages
- Average Magenta Cartridge Yield – Up to 667 standard pages
- Estimated supplemental K (Black 8) Cartridge Yield - Up to 5,428 standard pages

Using the test page defined in ISO/IEC 19752 provides the following results:

- Average K (Black) Cartridge Yield – Up to 524 standard pages
- Estimated supplemental Cyan Cartridge Yield – Up to 5,701 standard pages
- Estimated supplemental Yellow Cartridge Yield – Up to 7,593 standard pages
- Estimated supplemental Magenta Cartridge Yield – Up to 5,187 standard pages
- Estimated supplemental K (Black 8) Cartridge Yield - Up to 10,191 standard pages

Values obtained by continuous printing. Declared yield values in accordance with ISO/IEC 24711

ISO 24712

Cartridge Identifier	Color	Average (pages)	90% Lower Confidence (pages)	Number used in calculations/test
PGI-5BK	K (Pigment Black)	500	492	15/21
CLI-8C	Cyan	911	892	9/13
CLI-8Y	Yellow	726	718	9/14
CLI-8M	Magenta	680	667	12/17
CLI-8BK*	K (Black)	5,803	5,428	3/6

ISO 19752

Cartridge Identifier	Color	Average (pages)	90% Lower Confidence (pages)	Number used in calculations/test
PGI-5BK	K (Pigment Black)	532	524	9/9
CLI-8C*	Cyan	5,986	5,701	3/3
CLI-8Y*	Yellow	7,837	7,593	3/3
CLI-8M*	Magenta	5,320	5,187	3/3
CLI-8BK*	K (Black)	10,982	10,191	3/3

* Denotes supplemental cartridge

Test results and cost information provided by QualityLogic. Tests were performed under laboratory conditions and end-user's results may vary. Test results, ink cartridge pricing and cost per page pricing subject to change without notice by QualityLogic. All test results and cost information are provided "as-is," "as available," and all warranties, expressed or implied are hereby disclaimed. Users of the information contained herein assume full responsibility and risk of loss resulting from usage thereof.

Printer Identifier	Canon PIXMA MP610
Printer Manufacturer	Canon
Cartridge Identifier	PGI-5BK & CLI-8C, CLI-8Y, CLI-8M, CLI-8BK
Cartridge Type	Separate ink supply and print head
Date Tested	February 13, 2008 to February 18, 2008
EOL Criteria	This printer has Ink Out which stops printing. Whichever came first, either Ink Out or Fade, was used as the EOL criteria.
Print mode used	Continuous
Paper Size	4" x 6" borderless photo on 8 ½" x 11" photo paper
Media used	Canon Photo Paper Plus Glossy, PP-101
Driver version	Driver Version=5/30/2007, 2.10.2.40 The following driver settings were changed from default: Paper Type = Changed to Photo Paper Plus Glossy from Plain Paper Print Quality = Changed to High from Standard

Declaration of Yield

Inkjet Cartridge Yield when tested in Canon PIXMA MP610:

Using the QualityLogic Color Photo test suite provides the following results:

- Average Cyan Cartridge Yield – Up to 378 standard pages
- Average Yellow Cartridge Yield – Up to 350 standard pages
- Average Magenta Cartridge Yield – Up to 277 standard pages
- Estimated supplemental K (Black 8) Cartridge Yield – Up to 1,074 standard pages
- Estimated supplemental K (Black 5) Cartridge Yield – Up to 2,410 standard pages

Values obtained by continuous printing. Declared yield values in accordance with QualityLogic Color Photo Yield Test Methodology

QualityLogic Color Photo Suite

Cartridge Identifier	Color	Average (pages)	90% Lower Confidence (pages)	Number used in calculations/test
CLI-8C	Cyan	389	378	9/9
CLI-8Y	Yellow	353	350	9/12
CLI-8M	Magenta	283	277	12/15
CLI-8BK*	K (Black)	1,098	1,074	3/6
PGI-5BK*	K (Pigment Black)	2,475	2,410	3/3

* Denotes supplemental cartridge

Printer Identifier	Canon PIXMA MX700
Printer Manufacturer	Canon
Cartridge Identifier	PGI-5BK & CLI-8C, CLI-8Y, CLI-8M
Cartridge Type	Separate ink supply and print head
Date Tested	January 30, 2008 to February 13, 2008
EOL Criteria	This printer has Ink Out which stops printing. Whichever came first, either Ink Out or Fade, was used as the EOL criteria.
Print mode used	Continuous
Paper Size	A4
Media used	Hammermill Fore MP-White, 96 Brightness 20lb. weight
Driver version	Driver Version=06/26/2007, 2.11.2.20 The following driver settings were changed from default: Size = Changed to A4 from Letter 8.5"x11"

Declaration of Yield

Inkjet Cartridge Yield when tested in Canon PIXMA MX700:

Using the test suite defined in ISO/IEC 24712 provides the following results:

- Average K (Black) Cartridge Yield – Up to 484 standard pages
- Average Cyan Cartridge Yield – Up to 926 standard pages
- Average Yellow Cartridge Yield – Up to 706 standard pages
- Average Magenta Cartridge Yield – Up to 679 standard pages

Using the test page defined in ISO/IEC 19752 provides the following results:

- Average K (Black) Cartridge Yield – Up to 495 standard pages
- Estimated supplemental Cyan Cartridge Yield – Up to 7,160 standard pages
- Estimated supplemental Yellow Cartridge Yield – Up to 8,698 standard pages
- Estimated supplemental Magenta Cartridge Yield – Up to 6,181 standard pages

Values obtained by continuous printing. Declared yield values in accordance with ISO/IEC 24711

ISO 24712

Cartridge Identifier	Color	Average (pages)	90% Lower Confidence (pages)	Number used in calculations/test
PGI-5BK	K (Pigment Black)	492	484	15/21
CLI-8C	Cyan	941	926	9/12
CLI-8Y	Yellow	719	706	9/15
CLI-8M	Magenta	688	679	12/18

ISO 19752

Cartridge Identifier	Color	Average (pages)	90% Lower Confidence (pages)	Number used in calculations/test
PGI-5BK	K (Pigment Black)	513	495	9/9
CLI-8C*	Cyan	7,439	7,160	3/3
CLI-8Y*	Yellow	9,119	8,698	3/3
CLI-8M*	Magenta	6,426	6,181	3/3

* Denotes supplemental cartridge

Printer Identifier	Canon PIXMA MX700
Printer Manufacturer	Canon
Cartridge Identifier	PGI-5BK & CLI-8C, CLI-8Y, CLI-8M
Cartridge Type	Separate ink supply and print head
Date Tested	February 26, 2008 to February 28, 2008
EOL Criteria	This printer has Ink Out which stops printing. Whichever came first, either Ink Out or Fade, was used as the EOL criteria.
Print mode used	Continuous
Paper Size	4" x 6" borderless photo on 8 1/2" x 11" photo paper
Media used	Canon Photo Paper Plus Glossy, PP-101
Driver version	Driver Version=06/26/2007, 2.11.2.20 The following driver settings were changed from default: Media Type = Changed to Photo Paper Plus Glossy from Plain Papers Print Quality = Changed to High from Standard Paper Source = Changed to Rear Tray from Paper Feed Switch

Declaration of Yield

Inkjet Cartridge Yield when tested in Canon PIXMA MX700:

Using the QualityLogic Color Photo test suite provides the following results:

- Average Cyan Cartridge Yield – Up to 363 standard pages
- Average Yellow Cartridge Yield – Up to 272 standard pages
- Average Magenta Cartridge Yield – Up to 240 standard pages
- Estimated supplemental K (Black) Cartridge Yield – Up to 2,967 standard pages

Values obtained by continuous printing. Declared yield values in accordance with QualityLogic Color Photo Yield Test Methodology

QualityLogic Color Photo Suite

Cartridge Identifier	Color	Average (pages)	90% Lower Confidence (pages)	Number used in calculations/test
CLI-8C	Cyan	370	363	9/9
CLI-8Y	Yellow	277	272	10/13
CLI-8M	Magenta	245	240	12/15
PGI-5BK*	K (Pigment Black)	3,057	2,967	3/3

* Denotes supplemental cartridge

Printer Identifier	Epson Stylus DX6000
Printer Manufacturer	Epson
Cartridge Identifier	T0711, T0712, T0713, T0714
Cartridge Type	Separate ink supply and print head
Date Tested	May 16, 2007 to May 23, 2007
EOL Criteria	This printer has Ink Out which stops printing. Whichever came first, either Ink Out or Fade, was used as the EOL criteria.
Print mode used	Continuous
Paper Size	A4
Media used	Hammermill Fore MP-White, 96 Brightness 20lb. weight
Driver version	Driver Version = 11/22/2006 6.10.00.00 The driver settings used for Color testing were: Quality Option = Text and Image Type = plain papers Size = A4 (210x297 mm) The driver settings used for Mono testing were: Quality Option = Text Type = plain papers Size = A4

Declaration of Yield

Inkjet Cartridge Yield when tested in Epson Stylus DX6000:

Using the test suite defined in ISO/IEC 24712 provides the following results:

- Average K (Black) Cartridge Yield – Up to 243 standard pages
- Average Cyan Cartridge Yield – Up to 436 standard pages
- Average Yellow Cartridge Yield – Up to 442 standard pages
- Average Magenta Cartridge Yield – Up to 274 standard pages

Using the test page defined in ISO/IEC 19752 provides the following results:

- Average K (Black) Cartridge Yield – Up to 303 standard pages
- Estimated supplemental Cyan Cartridge Yield Up to 1,167 standard pages
- Estimated supplemental Yellow Cartridge Yield Up to 1,782 standard pages
- Estimated supplemental Magenta Cartridge Yield Up to 1,558 standard pages

Values obtained by continuous printing. Declared yield value in accordance with ISO/IEC 24711.

ISO 24712

Cartridge Identifier	Color	Average (pages)	90% Lower Confidence (pages)	Number used in calculations/test
T0711	K (Black)	248	243	15/21
T0712	Cyan	444	436	9/15
T0714	Yellow	457	442	9/12
T0713	Magenta	281	274	13/19

ISO 19752

Cartridge Identifier	Color	Average (pages)	90% Lower Confidence (pages)	Number used in calculations/test
T0711	K (Black)	313	303	9/9
T0712*	Cyan	1,351	1,167	3/3
T0714*	Yellow	2,139	1,782	3/3
T0713*	Magenta	1,778	1,558	3/3

* Denotes supplemental cartridge

Test results and cost information provided by QualityLogic. Tests were performed under laboratory conditions and end-user's results may vary. Test results, ink cartridge pricing and cost per page pricing subject to change without notice by QualityLogic. All test results and cost information are provided "as-is," "as available," and all warranties, expressed or implied are hereby disclaimed. Users of the information contained herein assume full responsibility and risk of loss resulting from usage thereof.

Printer Identifier	Epson Stylus DX6000
Printer Manufacturer	Epson
Cartridge Identifier	T0711, T0712, T0713, T0714
Cartridge Type	Separate ink supply and print head
Date Tested	May 22, 2007 to May 29, 2007
EOL Criteria	This printer has Ink Out which stops printing. Whichever came first, either Ink Out or Fade, was used as the EOL criteria.
Print mode used	Continuous
Paper Size	4" x 6" borderless photo on 210 x 297 mm photo paper
Media used	Epson Premium Glossy Photo Paper (C13S041624)
Driver version	DriverVer=11/22/2006 6.10.00.00 The following driver settings were used: Quality option: Best Photo Type: Epson Premium Glossy Size: A4

Declaration of Yield

Inkjet Cartridge Yield when tested in Epson Stylus DX6000:

Using the QualityLogic Color Photo Suite:

- Average Cyan Cartridge Yield – Up to 99 standard pages
- Average Yellow Cartridge Yield – Up to 122 standard pages
- Average Magenta Cartridge Yield – Up to 96 standard pages
- Estimated supplemental K (Black) Cartridge Yield – Up to 802 standard pages

Values obtained by continuous printing. Declared yield value in accordance with QualityLogic Color Photo Cartridge Yield Test Methodology.

QualityLogic Color Photo Suite

Cartridge Identifier	Color	Average (pages)	90% Lower Confidence (pages)	Number used in calculations/test
T0712	Cyan	104	99	9/12
T0714	Yellow	129	122	9/9
T0713	Magenta	99	96	9/12
T0711*	K (Black)	908	802	3/3

* Denotes supplemental cartridge

Printer Identifier	Epson Stylus DX9400F
Printer Manufacturer	Epson
Cartridge Identifier	T0711, T0712, T0713, T0714
Cartridge Type	Separate ink supply and print head
Date Tested	February 7, 2008 to February 11, 2008
EOL Criteria	This printer has Ink Out which stops printing. Whichever came first, either Ink Out or Fade, was used as the EOL criteria.
Print mode used	Continuous
Paper Size	A4
Media used	Hammermill Fore MP-White, 96 Brightness 20lb. weight
Driver version	Driver Version=05/14/2007, 6.50.00.00 The following driver settings were changed from default: Color Ink Test: Paper Options Size = Changed to A4 210 x 297 mm from Letter 8 ½ x 11 in. Mono Ink Test: Quality Option = Changed to Text from Text & Image. The "Black Ink Only" option was enabled in the Advanced tab. Paper Options Size = Changed to A4 210 x 297 mm from Letter 8 ½ x 11 in.

Declaration of Yield

Inkjet Cartridge Yield when tested in Epson Stylus DX9400F:

Using the test suite defined in ISO/IEC 24712 provides the following results:

- Average K (Black) Cartridge Yield – Up to 238 standard pages
- Average Cyan Cartridge Yield – Up to 377 standard pages
- Average Yellow Cartridge Yield – Up to 394 standard pages
- Average Magenta Cartridge Yield – Up to 282 standard pages

Using the test page defined in ISO/IEC 19752 provides the following results:

- Average K (Black) Cartridge Yield – Up to 242 standard pages
- Estimated supplemental Cyan Cartridge Yield – Up to 1,624 standard pages
- Estimated supplemental Yellow Cartridge Yield – Up to 2,234 standard pages
- Estimated supplemental Magenta Cartridge Yield – Up to 2,326 standard pages

Values obtained by continuous printing. Declared yield values in accordance with ISO/IEC 24711

ISO 24712

Cartridge Identifier	Color	Average (pages)	90% Lower Confidence (pages)	Number used in calculations/test
T0711	K (Black)	243	238	15/20
T0712	Cyan	390	377	9/15
T0714	Yellow	411	394	9/12
T0713	Magenta	290	282	12/18

ISO 19752

Cartridge Identifier	Color	Average (pages)	90% Lower Confidence (pages)	Number used in calculations/test
T0711	K (Black)	249	242	9/9
T0712*	Cyan	1,743	1,624	3/3
T0714*	Yellow	2,493	2,234	3/3
T0713*	Magenta	2,576	2,326	3/3

* Denotes supplemental cartridge

Test results and cost information provided by QualityLogic. Tests were performed under laboratory conditions and end-user's results may vary. Test results, ink cartridge pricing and cost per page pricing subject to change without notice by QualityLogic. All test results and cost information are provided "as-is," "as available," and all warranties, expressed or implied are hereby disclaimed. Users of the information contained herein assume full responsibility and risk of loss resulting from usage thereof.

Printer Identifier	Epson Stylus DX9400F
Printer Manufacturer	Epson
Cartridge Identifier	T0711, T0712, T0713, T0714
Cartridge Type	Separate ink supply and print head
Date Tested	February 12, 2008 to February 14, 2008
EOL Criteria	This printer has Ink Out which stops printing. Whichever came first, either Ink Out or Fade, was used as the EOL criteria.
Print mode used	Continuous
Paper Size	4" x 6" borderless photo on 210 x 297 mm photo paper
Media used	Epson Premium Glossy Photo Paper, S041624
Driver version	Driver Version=05/14/2007, 6.50.00.00 The following driver settings were changed from default: Quality Option = Changed to Best Photo from Text & Image. Paper Options Type = Changed to Epson Premium Glossy from plain papers. Paper Options Size = Changed to A4 210 x 297 mm from Letter 8 ½ x 11 in. Paper & Quality Options (Advanced Tab) = Changed to Photo RPM from Normal.

Declaration of Yield

Inkjet Cartridge Yield when tested in Epson Stylus DX9400F:

Using the QualityLogic Color Photo test suite provides the following results:

- Average Cyan Cartridge Yield – Up to 85 standard pages
- Average Yellow Cartridge Yield – Up to 114 standard pages
- Average Magenta Cartridge Yield – Up to 86 standard pages
- Estimated supplemental K (Black) Cartridge Yield – Up to 471 standard pages

Values obtained by continuous printing. Declared yield values in accordance with QualityLogic Color Photo Yield Test Methodology

QualityLogic Color Photo Suite

Cartridge Identifier	Color	Average (pages)	90% Lower Confidence (pages)	Number used in calculations/test
T0712	Cyan	88	85	12/13
T0714	Yellow	117	114	9/9
T0713	Magenta	88	86	11/13
T0711*	K (Black)	525	471	3/3

* Denotes supplemental cartridge

Test results and cost information provided by QualityLogic. Tests were performed under laboratory conditions and end-user's results may vary. Test results, ink cartridge pricing and cost per page pricing subject to change without notice by QualityLogic. All test results and cost information are provided "as-is," "as available," and all warranties, expressed or implied are hereby disclaimed. Users of the information contained herein assume full responsibility and risk of loss resulting from usage thereof.

Printer Identifier	Epson Stylus Photo RX560
Printer Manufacturer	Epson
Cartridge Identifier	T0801, T0802, T0803, T0804, T0805, T0806
Cartridge Type	Separate ink supply and print head
Date Tested	May 21, 2007 to May 30, 2007
EOL Criteria	This printer has Ink Out which stops printing. Whichever came first, either Ink Out or Fade, was used as the EOL criteria.
Paper Size	A4
Print mode used	Continuous
Media used	Hammermill Fore MP-White, 96 Brightness 20lb. weight
Driver version	The driver settings used for color test: Quality Option = Text and Image Type = plain papers Size = A4 (210x297 mm) The driver settings used for Mono testing: Quality Option = Text Type = plain papers Size = A4

Declaration of Yield

Inkjet Cartridge Yield when tested in Epson Stylus Photo RX560:

Using the test suite defined in ISO/IEC 24712 provides the following results:

- Average K (Black) Cartridge Yield – Up to 327 standard pages
- Average Cyan Cartridge Yield – Up to 1,045 standard pages
- Average Yellow Cartridge Yield – Up to 491 standard pages
- Average Magenta Cartridge Yield – Up to 490 standard pages
- Average supplemental Light Cyan Cartridge Yield – Up to 451 standard pages
- Average supplemental Light Magenta Cartridge Yield – Up to 660 standard pages

Using the test page defined in ISO/IEC 19752 provides the following results:

- Average K (Black) Cartridge Yield – Up to 343 standard pages
- Estimated supplemental Cyan Cartridge Yield Up to 3,095 standard pages
- Estimated supplemental Yellow Cartridge Yield Up to 3,290 standard pages
- Estimated supplemental Magenta Cartridge Yield Up to 3,971 standard pages
- Estimated supplemental Light Cyan Cartridge Yield Up to 2,408 standard pages
- Estimated supplemental Light Magenta Cartridge Yield Up to 2,388 standard pages

Values obtained by continuous printing. Declared yield value in accordance with ISO/IEC 24711.

ISO 24712

Cartridge Identifier	Color	Average (pages)	90% Lower Confidence (pages)	Number used in calculations/test
T0801	K (Black)	330	327	28/34
T0802	Cyan	1,091	1,045	9/12
T0804	Yellow	497	491	18/24
T0803	Magenta	496	490	18/24
T0805*	Light Cyan	456	451	20/26
T0806*	Light Magenta	682	660	12/18

ISO 19752

Cartridge Identifier	Color	Average (pages)	90% Lower Confidence (pages)	Number used in calculations/test
T0801	K (Black)	351	343	9/9
T0802*	Cyan	3,154	3,095	3/3
T0804*	Yellow	3,369	3,290	3/3
T0803*	Magenta	4,051	3,971	3/3
T0805*	Light Cyan	2,484	2,408	3/3
T0806*	Light Magenta	2,498	2,388	3/3

* Denotes supplemental cartridge

Printer Identifier	Epson Stylus Photo RX560
Printer Manufacturer	Epson
Cartridge Identifier	T0801, T0802, T0803, T0804, T0805, T0806
Cartridge Type	Separate ink supply and print head
Date Tested	May 30, 2007 to June 7, 2007
EOL Criteria	This printer has Ink Out which stops printing. Whichever came first, either Ink Out or Fade, was used as the EOL criteria.
Print mode used	Continuous
Paper Size	4" x 6" borderless photo on 210 x 297 mm photo paper
Media used	Epson Premium Glossy Photo Paper (C13S041624)
Driver version	Driver Version = 11/01/2006, 6.10.00.00 The following settings were used: Quality Option: Best Photo Type: Epson Premium Glossy Size: A4

Declaration of Yield

Inkjet Cartridge Yield when tested in Epson Stylus Photo RX560:

Using the QualityLogic Color Photo Suite:

- Average K (Black) Cartridge Yield – Up to 317 standard pages
- Average Cyan Cartridge Yield – Up to 370 standard pages
- Average Yellow Cartridge Yield – Up to 182 standard pages
- Average Magenta Cartridge Yield – Up to 249 standard pages
- Average Light Cyan Cartridge Yield – Up to 100 standard pages
- Average Light Magenta Cartridge Yield – Up to 118 standard pages

Values obtained by continuous printing. Declared yield value in accordance with QualityLogic Color Photo Cartridge Yield Test Methodology.

QualityLogic Color Photo Suite

Cartridge Identifier	Color	Average (pages)	90% Lower Confidence (pages)	Number used in calculations/test
T0801	K (Black)	331	317	9/12
T0802	Cyan	384	370	9/9
T0804	Yellow	186	182	18/21
T0803	Magenta	257	249	12/15
T0805	Light Cyan	101	100	33/36
T0806	Light Magenta	120	118	27/30

Printer Identifier	Epson Stylus Photo RX685
Printer Manufacturer	Epson
Cartridge Identifier	T0801, T0802, T0803, T0804, T0805, T0806
Cartridge Type	Separate ink supply and print head
Date Tested	January 21, 2008 to February 11, 2008
EOL Criteria	This printer has Ink Out which stops printing. Whichever came first, either Ink Out or Fade, was used as the EOL criteria.
Paper Size	A4
Print mode used	Continuous
Media used	Hammermill Fore MP-White, 96 Brightness 20lb. weight
Driver version	DriverVer=07/10/2007, 6.52.00.00 The following driver settings were changed from default: Paper Option Size = Changed to A4 210 x 297 mm from Letter 8 ½ x 11 in.

Declaration of Yield

Inkjet Cartridge Yield when tested in Epson Stylus Photo RX685:

Using the test suite defined in ISO/IEC 24712 provides the following results:

- Average K (Black) Cartridge Yield – Up to 353 standard pages
- Average Cyan Cartridge Yield – Up to 1,029 standard pages
- Average Yellow Cartridge Yield – Up to 585 standard pages
- Average Magenta Cartridge Yield – Up to 491 standard pages
- Average supplemental Light Cyan Cartridge Yield – Up to 381 standard pages
- Average supplemental Light Magenta Cartridge Yield – Up to 754 standard pages

Using the test page defined in ISO/IEC 19752 provides the following results:

- Average K (Black) Cartridge Yield – Up to 383 standard pages
- Estimated supplemental Cyan Cartridge Yield – Up to 3,182 standard pages
- Estimated supplemental Yellow Cartridge Yield – Up to 4,077 standard pages
- Estimated supplemental Magenta Cartridge Yield – Up to 2,786 standard pages
- Estimated supplemental Light Cyan Cartridge Yield – Up to 2,932 standard pages
- Estimated supplemental Light Magenta Cartridge Yield – Up to 3,714 standard pages

Values obtained by continuous printing. Declared yield values in accordance with ISO/IEC 24711

ISO 24712

Cartridge Identifier	Color	Average (pages)	90% Lower Confidence (pages)	Number used in calculations/test
T0801	K (Black)	357	353	25/31
T0802	Cyan	1,057	1,029	9/12
T0804	Yellow	599	585	15/21
T0803	Magenta	499	491	18/24
T0805*	Light Cyan	387	381	22/28
T0806*	Light Magenta	773	754	11/17

ISO 19752

Cartridge Identifier	Color	Average (pages)	90% Lower Confidence (pages)	Number used in calculations/test
T0801	K (Black)	387	383	9/9
T0802*	Cyan	3,446	3,182	3/3
T0804*	Yellow	4,631	4,077	3/3
T0803*	Magenta	2,987	2,786	3/3
T0805*	Light Cyan	3,475	2,932	3/3
T0806*	Light Magenta	3,955	3,714	3/3

* Denotes supplemental cartridge

Printer Identifier	Epson Stylus Photo RX685
Printer Manufacturer	Epson
Cartridge Identifier	T0801, T0802, T0803, T0804, T0805, T0806
Cartridge Type	Separate ink supply and print head
Date Tested	January 31, 2008 to February 14, 2008
EOL Criteria	This printer has Ink Out which stops printing. Whichever came first, either Ink Out or Fade, was used as the EOL criteria.
Print mode used	Continuous
Paper Size	4" x 6" borderless photo on 210 x 297 mm photo paper
Media used	Epson Premium Glossy Photo Paper, S041624
Driver version	DriverVer=07/10/2007, 6.52.00.00 The following driver settings were changed from default: Quality Option = Changed to Best Photo from Text. Type = Changed to Epson Premium Glossy from plain papers. Size = Changed to A4 210 x 297 mm from Letter 8 ½ x 11 in.

Declaration of Yield

Inkjet Cartridge Yield when tested in Epson Stylus Photo RX685:

Using the QualityLogic Color Photo test suite provides the following results:

- Average Cyan Cartridge Yield – Up to 414 standard pages
- Average Yellow Cartridge Yield – Up to 209 standard pages
- Average Magenta Cartridge Yield – Up to 312 standard pages
- Average Light Cyan Cartridge Yield – Up to 105 standard pages
- Average Light Magenta Cartridge Yield – Up to 117 standard pages
- Estimated supplemental K (Black) Cartridge Yield – Up to 472 standard pages

Values obtained by continuous printing. Declared yield values in accordance with QualityLogic Color Photo Yield Test Methodology

QualityLogic Color Photo Suite

Cartridge Identifier	Color	Average (pages)	90% Lower Confidence (pages)	Number used in calculations/test
T0802	Cyan	422	414	9/9
T0804	Yellow	213	209	16/18
T0803	Magenta	316	312	11/13
T0805	Light Cyan	106	105	34/37
T0806	Light Magenta	117	117	30/33
T0801*	K (Black)	488	472	6/9

* Denotes supplemental cartridge

Printer Identifier	HP Photosmart C4280
Cartridge Type	Integral ink supply and print head
Cartridge Identifiers	HP350, HP351
Date Tested	August 15, 2007 to August 22, 2007
End Of Life Criteria	Fade was used as the EOL criteria
Print mode	Continuous
Media used	Hammermill Fore MP-White, 96 Brightness 20lb. weight
Paper Size	A4
Driver version	The latest driver available was downloaded from the following website: http://h10025.www1.hp.com/ewfrf/wc/softwareDownloadIndex?softwareitem=mp-492831&lc=en&cc=uk&dlc=en&product=3192753&os=181&lang=en Driver Version = 12/26/2006,61.063.247.00 The following driver settings were used: Print Quality = Normal Paper Type = Plain paper Size = A4

Declaration of Yield:

Inkjet Cartridge Yield when tested in HP Photosmart C4280:
Using the test suite defined in ISO/IEC 24712 provides the following results: Average K (Black) Cartridge Yield – Up to 197 standard pages Average Tri-color Cartridge Yield – Up to 156 standard pages
Using the test page defined in ISO/IEC 19752 provides the following results: Average K (Black) Cartridge Yield – Up to 202 standard pages Estimated supplemental Tri-color Cartridge Yield Up to 1,031 standard pages
Values obtained by continuous printing. Declared yield values in accordance with ISO/IEC 24711

ISO 24712

Cartridge Identifier	Color	Average (pages)	90% Lower Confidence (pages)	Number used in calculations/test
HP 350	K (Black)	201	197	9/9
HP 351	Tri-color	162	156	9/12

ISO 19752

Cartridge Identifier	Color	Average (pages)	90% Lower Confidence (pages)	Number used in calculations/test
HP 350	K (Black)	220	202	9/9
HP 351*	Tri-color	1,076	1,031	3/3

* Denotes supplemental cartridge

Test results and cost information provided by QualityLogic. Tests were performed under laboratory conditions and end-user's results may vary. Test results, ink cartridge pricing and cost per page pricing subject to change without notice by QualityLogic. All test results and cost information are provided "as-is," "as available," and all warranties, expressed or implied are hereby disclaimed. Users of the information contained herein assume full responsibility and risk of loss resulting from usage thereof.

Printer Identifier	HP Photosmart C4280
Cartridge Type	Integral ink supply and print head
Cartridge Identifiers	HP350, HP351
Date Tested	August 22, 2007 to August 23, 2007
End Of Life Criteria	Fade was used as the EOL criteria
Print mode	Continuous
Media used	HP Premium Plus High-gloss Photo Paper (Q1786A)
Paper Size	4" x 6" borderless photo on 210 x 297 mm photo paper
Driver version	The latest driver available was downloaded from the following website: http://h10025.www1.hp.com/ewfrf/wc/softwareDownloadIndex?softwareitem=mp-492831&lc=en&cc=uk&dlc=en&product=3192753&os=181&lang=en Driver Version = 12/26/2006,61.063.247.00 The following driver settings were used: Print Quality = Best Paper Type = HP Premium Plus Photo Papers Size = A4 (210 x 297mm)

Declaration of Yield:

Inkjet Cartridge Yield when tested in HP Photosmart C4280:
Using the QualityLogic Color Photo test suite provides the following results:
Average Tri-color Cartridge Yield – Up to 45 standard pages
Estimated supplemental K (Black) Cartridge Yield – Up to 1,002 standard pages

Values obtained by continuous printing. Declared yield values in accordance with QualityLogic Color Photo Yield Test Methodology

QualityLogic Color Photo Suite

Cartridge Identifier	Color	Average (pages)	90% Lower Confidence (pages)	Number used in calculations/test
HP 351	Tri-color	48	45	9/10
HP 350*	K (Black)	1,107	1,002	3/3

* Denotes supplemental cartridge

Test results and cost information provided by QualityLogic. Tests were performed under laboratory conditions and end-user's results may vary. Test results, ink cartridge pricing and cost per page pricing subject to change without notice by QualityLogic. All test results and cost information are provided "as-is," "as available," and all warranties, expressed or implied are hereby disclaimed. Users of the information contained herein assume full responsibility and risk of loss resulting from usage thereof.

Printer Identifier	HP Photosmart C5180
Printer Manufacturer	Hewlett-Packard
Cartridge Type	Separate ink supply and print head
Cartridge Identifiers	HP363 C8721EE, HP363 C8771EE HP363 C8772EE, HP363 C8721EE
Date Tested	August 16, 2007 to August 30, 2007
End Of Life Criteria	This printer has Ink Out which stops printing. Whichever came first, either Ink Out or Fade, was used as the EOL criteria.
Print mode	Continuous
Media used	Hammermill Fore MP-White, 96 Brightness 20lb. weight
Paper Size	A4
Driver version	The latest driver available was downloaded from the following website: http://h10025.www1.hp.com/ewfrf/wc/softwareList?os=181&lc=en&cc=uk&dlc=en&product=1153481&lang=en Driver Version = 04/26/2006, 60.054.45.00 The following driver settings were used: Print Quality = Normal Paper Type = Plain paper Size = A4

Declaration of Yield:

<p>Inkjet Cartridge Yield when tested in HP Photosmart C5180:</p> <p>Using the test suite defined in ISO/IEC 24712 provides the following results:</p> <ul style="list-style-type: none"> Average K (Black) Cartridge Yield – Up to 466 standard pages Average Cyan Cartridge Yield – Up to 397 standard pages Average Yellow Cartridge Yield – Up to 482 standard pages Average Magenta Cartridge Yield – Up to 388 standard pages Estimated supplemental Light Cyan Cartridge Yield – Up to 13,296 standard pages Estimated supplemental Light Magenta Cartridge Yield – Up to 11,039 standard pages <p>Using the test page defined in ISO/IEC 19752 provides the following results:</p> <ul style="list-style-type: none"> Average K (Black) Cartridge Yield – Up to 409 standard pages Estimated supplemental Cyan Cartridge Yield Up to 2,582 standard pages Estimated supplemental Yellow Cartridge Yield Up to 2,407 standard pages Average supplemental Magenta Cartridge Yield Up to 1,528 standard pages Estimated supplemental Light Cyan Cartridge Yield Up to 15,053 standard pages Estimated supplemental Light Magenta Cartridge Yield Up to 16,132 standard pages <p>Values obtained by continuous printing. Declared yield values in accordance with ISO/IEC 24711</p>
--

Test results and cost information provided by QualityLogic. Tests were performed under laboratory conditions and end-user's results may vary. Test results, ink cartridge pricing and cost per page pricing subject to change without notice by QualityLogic. All test results and cost information are provided "as-is," "as available," and all warranties, expressed or implied are hereby disclaimed. Users of the information contained herein assume full responsibility and risk of loss resulting from usage thereof.

ISO 24712

Cartridge Identifier	Color	Average (pages)	90% Lower Confidence (pages)	Number used in calculations/test
HP363 C8721EE	K (Black)	473	466	45/48
HP363 C8771EE	Cyan	412	397	52/54
HP363 C8773EE	Yellow	496	482	43/46
HP363 C8772EE	Magenta	400	388	54/57
HP363 C8774EE*	Light Cyan	16,500	13,296	3/3
HP363 C8775EE*	Light Magenta	15,367	11,039	3/3

ISO 19752

Cartridge Identifier	Color	Average (pages)	90% Lower Confidence (pages)	Number used in calculations/test
HP363 C8721EE	K (Black)	418	409	51/54
HP363 C8771EE*	Cyan	3,081	2,582	6/12
HP363 C8773EE*	Yellow	2,760	2,407	6/12
HP363 C8772EE*	Magenta	1,729	1,528	11/17
HP363 C8774EE*	Light Cyan	16,914	15,053	3/6
HP363 C8775EE*	Light Magenta	17,079	16,132	3/6

* Denotes supplemental cartridge

Printer Identifier	HP Photosmart C5180
Printer Manufacturer	Hewlett-Packard
Cartridge Type	Separate ink supply and print head
Cartridge Identifiers	HP363 C8771EE, HP363 C8772EE HP363 C8773EE, HP363 C8774EE, HP363 C8775EE, HP363 C8721EE
Date Tested	June 25, 2007 to July 24, 2007
End Of Life Criteria	This printer has Ink Out which stops printing. Whichever came first, either Ink Out or Fade, was used as the EOL criteria.
Print mode	Continuous
Media used	HP Premium Plus High-gloss Photo Paper (Q1786A)
Paper Size	4" x 6" borderless photo on 210 x 297 mm photo paper
Driver version	The latest driver available was downloaded from the following website: http://h10025.www1.hp.com/ewfrf/wc/softwareList?os=181&lc=en&cc=uk&dlc=en&product=1153481&lang=en Driver Version = 04/26/2006, 60.054.45.00 The following driver settings were used: Print Quality = Best Paper Type = HP Premium Plus Photo Papers Size = A4

Declaration of Yield:

<p>Inkjet Cartridge Yield when tested in HP Photosmart C5180:</p> <p>Using the QualityLogic Color Photo test suite provides the following results:</p> <p>Average Cyan Cartridge Yield – Up to 303 standard pages Average Yellow Cartridge Yield – Up to 148 standard pages Average Magenta Cartridge Yield – Up to 327 standard pages Average Light Cyan Cartridge Yield – Up to 134 standard pages Average Light Magenta Cartridge Yield – Up to 134 standard pages Estimated supplemental K (Black) Cartridge Yield – Up to 602 standard pages</p> <p>Values obtained by continuous printing. Declared yield values in accordance with QualityLogic Color Photo Yield Test Methodology</p>

QualityLogic Color Photo Suite

Cartridge Identifier	Color	Average (pages)	90% Lower Confidence (pages)	Number used in calculations/test
HP363 C8771EE	Cyan	358	303	9/10
HP363 C8773EE	Yellow	156	148	21/24
HP363 C8772EE	Magenta	366	327	9/11
HP363 C8774EE	Light Cyan	142	134	23/26
HP363 C8775EE	Light Magenta	144	134	22/25
HP363 C8721EE*	K (Black)	633	602	3/6

* Denotes supplemental cartridge

Test results and cost information provided by QualityLogic. Tests were performed under laboratory conditions and end-user's results may vary. Test results, ink cartridge pricing and cost per page pricing subject to change without notice by QualityLogic. All test results and cost information are provided "as-is," "as available," and all warranties, expressed or implied are hereby disclaimed. Users of the information contained herein assume full responsibility and risk of loss resulting from usage thereof.

Printer Identifier	HP Photosmart C5280
Cartridge Type	Integral ink supply and print head
Cartridge Identifiers	HP 351, HP351
Date Tested	August 22, 2007 to August 26, 2007
End Of Life Criteria	Fade was used as the EOL criteria
Print mode	Continuous
Media used	Hammermill Fore MP-White, 96 Brightness 20lb. weight
Paper Size	A4
Driver version	The latest driver available was downloaded from the following website: http://h10025.www1.hp.com/ewfrf/wc/softwareList?os=181&lc=en&cc=uk&dlc=en&product=3204464&lang=en Driver Version = 61.71.244.0 The following driver settings were used: Print Quality = Normal Paper Type = Plain paper Size = A4 (210 x 297mm)

Declaration of Yield:

<p>Inkjet Cartridge Yield when tested in HP Photosmart C5280:</p> <p>Using the test suite defined in ISO/IEC 24712 provides the following results:</p> <p>Average K (Black) Cartridge Yield – Up to 198 standard pages Average Tri-color Cartridge Yield – Up to 141 standard pages</p> <p>Using the test page defined in ISO/IEC 19752 provides the following results:</p> <p>Average K (Black) Cartridge Yield – Up to 217 standard pages Estimated supplemental Tri-color Cartridge Yield Up to 886 standard pages</p> <p>Values obtained by continuous printing. Declared yield values in accordance with ISO/IEC 24711</p>
--

ISO 24712

Cartridge Identifier	Color	Average (pages)	90% Lower Confidence (pages)	Number used in calculations/test
HP 350	K (Black)	212	198	9/12
HP 351	Tri-color	148	141	12/18

ISO 19752

Cartridge Identifier	Color	Average (pages)	90% Lower Confidence (pages)	Number used in calculations/test
HP 350	K (Black)	235	217	9/9
HP 351*	Tri-color	967	886	3/3

* Denotes supplemental cartridge

Printer Identifier	HP Photosmart C5280
Cartridge Type	Integral ink supply and print head
Cartridge Identifiers	HP350, HP 351
Date Tested	August 25, 2007 to August 27, 2007
End Of Life Criteria	Fade was used as the EOL criteria
Print mode	Continuous
Media used	HP Premium Plus High-gloss Photo Paper (Q1786A)
Paper Size	4" x 6" borderless photo on 210 x 297 mm photo paper
Driver version	The latest driver available was downloaded from the following website: http://h10025.www1.hp.com/ewfrf/wc/softwareList?os=181&lc=en&cc=uk&dlc=en&product=3204464&lang=en Driver Version = 61.71.244.0 The following driver settings were used: Print Quality = Best Paper Type = HP Premium Plus Photo Papers Size = A4

Declaration of Yield:

<p>Inkjet Cartridge Yield when tested in HP Photosmart C5280:</p> <p>Using the QualityLogic Color Photo test suite provides the following results:</p> <p>Average Tri-color Cartridge Yield – Up to 43 standard pages</p> <p>Estimated supplemental K (Black) Cartridge Yield – Up to 1,296 standard pages</p> <p>Values obtained by continuous printing. Declared yield values in accordance with QualityLogic Color Photo Yield Test Methodology</p>

QualityLogic Color Photo Suite

Cartridge Identifier	Color	Average (pages)	90% Lower Confidence (pages)	Number used in calculations/test
HP 351	Tri-color	45	43	12/12
HP 350*	K (Black)	1,336	1,296	3/3

* Denotes supplemental cartridge

Test results and cost information provided by QualityLogic. Tests were performed under laboratory conditions and end-user's results may vary. Test results, ink cartridge pricing and cost per page pricing subject to change without notice by QualityLogic. All test results and cost information are provided "as-is," "as available," and all warranties, expressed or implied are hereby disclaimed. Users of the information contained herein assume full responsibility and risk of loss resulting from usage thereof.

Printer Identifier	HP Photosmart C6280 All-in-One
Printer Manufacturer	Hewlett-Packard
Cartridge Type	Separate ink supply and print head
Cartridge Identifiers	HP363 C8721EE, HP363 C8771EE, HP363 C8772EE, HP363 C8773EE, HP363 C8774EE, HP363 C8775EE
Date Tested	January 22, 2008 to February 18, 2008
End Of Life Criteria	This printer has Ink Out which stops printing. Whichever came first, either Ink Out or Fade, was used as the EOL criteria.
Print mode	Continuous
Media used	Hammermill Fore MP-White, 96 Brightness 20lb. weight
Paper Size	A4
Driver version	Driver Version=3/23/2007,61.071.244.0 The following driver settings were changed from default: Paper Type = Changed to Plain paper from Automatic Size = Changed to A4 from Letter

Declaration of Yield:

<p>Inkjet Cartridge Yield when tested in HP Photosmart C6280 All-in-One:</p> <p>Using the test suite defined in ISO/IEC 24712 provides the following results:</p> <ul style="list-style-type: none"> Average K (Black) Cartridge Yield – Up to 436 standard pages Average Cyan Cartridge Yield – Up to 410 standard pages Average Yellow Cartridge Yield – Up to 488 standard pages Average Magenta Cartridge Yield – Up to 389 standard pages Estimated supplemental Light Cyan Cartridge Yield – Up to 15,208 standard pages Estimated supplemental Light Magenta Cartridge Yield – Up to 14,436 standard pages <p>Using the test page defined in ISO/IEC 19752 provides the following results:</p> <ul style="list-style-type: none"> Average K (Black) Cartridge Yield – Up to 897 standard pages Average supplemental Cyan Cartridge Yield – Up to 1,312 standard pages Average supplemental Yellow Cartridge Yield – Up to 1,326 standard pages Average supplemental Magenta Cartridge Yield – Up to 769 standard pages Estimated supplemental Light Cyan Cartridge Yield – Up to 12,226 standard pages Estimated supplemental Light Magenta Cartridge Yield – Up to 12,420 standard pages <p>Values obtained by continuous printing. Declared yield values in accordance with ISO/IEC 24711</p>

ISO 24712

Cartridge Identifier	Color	Average (pages)	90% Lower Confidence (pages)	Number used in calculations/test
HP363 C8721EE	K (Black)	443	436	54/59
HP363 C8771EE	Cyan	423	410	56/61
HP363 C8773EE	Yellow	502	488	46/52
HP363 C8772EE	Magenta	401	389	60/65
HP363 C8774EE*	Light Cyan	15,888	15,208	3/6
HP363 C8775EE*	Light Magenta	15,411	14,436	3/6

Test results and cost information provided by QualityLogic. Tests were performed under laboratory conditions and end-user's results may vary. Test results, ink cartridge pricing and cost per page pricing subject to change without notice by QualityLogic. All test results and cost information are provided "as-is," "as available," and all warranties, expressed or implied are hereby disclaimed. Users of the information contained herein assume full responsibility and risk of loss resulting from usage thereof.

ISO 19752

Cartridge Identifier	Color	Average (pages)	90% Lower Confidence (pages)	Number used in calculations/test
HP363 C8721EE	K (Black)	922	897	26/27
HP363 C8771EE*	Cyan	1,397	1,312	16/18
HP363 C8773EE*	Yellow	1,404	1,326	15/18
HP363 C8772EE*	Magenta	822	769	29/31
HP363 C8774EE*	Light Cyan	15,626	12,226	3/3
HP363 C8775EE*	Light Magenta	14,366	12,420	3/3

* Denotes supplemental cartridge

Test results and cost information provided by QualityLogic. Tests were performed under laboratory conditions and end-user's results may vary. Test results, ink cartridge pricing and cost per page pricing subject to change without notice by QualityLogic. All test results and cost information are provided "as-is," "as available," and all warranties, expressed or implied are hereby disclaimed. Users of the information contained herein assume full responsibility and risk of loss resulting from usage thereof.

Printer Identifier	HP Photosmart C6280 All-in-One
Printer Manufacturer	Hewlett-Packard
Cartridge Type	Separate ink supply and print head
Cartridge Identifiers	HP363 C8771EE, HP363 C8772EE HP363 C8773EE, HP363 C8774EE, HP363 C8775EE, HP363 C8721EE
Date Tested	February 19, 2008 to February 22, 2008
End Of Life Criteria	This printer has Ink Out which stops printing. Whichever came first, either Ink Out or Fade, was used as the EOL criteria.
Print mode	Continuous
Media used	HP Premium Plus Photo Paper, High Gloss (Q1786A)
Paper Size	4" x 6" borderless photo on 210 x 297 mm photo paper
Driver version	Driver Version=3/23/2007,61.071.244.0 The following driver settings were changed from default: Paper Type = Changed to HP Premium Plus Photo Papers from Automatic Size = Changed to A4 from Letter Print Quality = Changed to Best from Normal

Declaration of Yield:

Inkjet Cartridge Yield when tested in HP Photosmart C6280 All-in-One:

Using the QualityLogic Color Photo test suite provides the following results:

- Average Cyan Cartridge Yield – Up to 295 standard pages
- Average Yellow Cartridge Yield – Up to 148 standard pages
- Average Magenta Cartridge Yield – Up to 318 standard pages
- Average Light Cyan Cartridge Yield – Up to 137 standard pages
- Average Light Magenta Cartridge Yield – Up to 126 standard pages
- Estimated supplemental K (Black) Cartridge Yield – Up to 519 standard pages

Values obtained by continuous printing. Declared yield values in accordance with QualityLogic Color Photo Yield Test Methodology

QualityLogic Color Photo Suite

Cartridge Identifier	Color	Average (pages)	90% Lower Confidence (pages)	Number used in calculations/test
HP363 C8771EE	Cyan	334	295	9/12
HP363 C8773EE	Yellow	156	148	19/22
HP363 C8772EE	Magenta	354	318	9/9
HP363 C8774EE	Light Cyan	141	137	19/22
HP363 C8775EE	Light Magenta	132	126	19/22
HP363 C8721EE*	K (Black)	552	519	4/7

* Denotes supplemental cartridge

Test results and cost information provided by QualityLogic. Tests were performed under laboratory conditions and end-user's results may vary. Test results, ink cartridge pricing and cost per page pricing subject to change without notice by QualityLogic. All test results and cost information are provided "as-is," "as available," and all warranties, expressed or implied are hereby disclaimed. Users of the information contained herein assume full responsibility and risk of loss resulting from usage thereof.

Printer Identifier	Lexmark X4850 Wireless All-In-One
Printer Manufacturer	Lexmark
Cartridge Identifier	42A, 41A
Cartridge Type	Integral ink supply and print head
Date Tested	March 17, 2008 to March 20, 2008
EOL Criteria	Fade
Print mode used	Continuous
Paper Size	A4
Media used	Hammermill Fore MP-White, 96 Brightness 20lb. weight
Driver version	Driver Version=05/29/2007, 1.0.5.1 The following driver settings were changed from default: Paper Type = Changed to Use my choice: Plain from Use printer sensor Paper Size = Changed to A4 (210 x 297 mm) from Letter (8 ½ x 11 in)

Declaration of Yield

<p>Inkjet Cartridge Yield when tested in Lexmark X4850 Wireless All-In-One:</p> <p>Using the test suite defined in ISO/IEC 24712 provides the following results: Average K (Black) Cartridge Yield – Up to 214 standard pages Average Tri-Color Cartridge Yield – Up to 258 standard pages</p> <p>Using the test page defined in ISO/IEC 19752 provides the following results: Average K (Black) Cartridge Yield – Up to 223 standard pages Estimated supplemental Tri-Color Cartridge Yield – Up to 2,759 standard pages</p> <p>Values obtained by continuous printing. Declared yield values in accordance with ISO/IEC 24711</p>
--

ISO 24712

Cartridge Identifier	Color	Average (pages)	90% Lower Confidence (pages)	Number used in calculations/test
42A	K (Black)	228	214	9/12
41A	Tri-color	274	258	9/10

ISO 19752

Cartridge Identifier	Color	Average (pages)	90% Lower Confidence (pages)	Number used in calculations/test
42A	K (Black)	232	223	9/9
41A*	Tri-color	2,985	2,759	3/3

* Denotes supplemental cartridge

Test results and cost information provided by QualityLogic. Tests were performed under laboratory conditions and end-user's results may vary. Test results, ink cartridge pricing and cost per page pricing subject to change without notice by QualityLogic. All test results and cost information are provided "as-is," "as available," and all warranties, expressed or implied are hereby disclaimed. Users of the information contained herein assume full responsibility and risk of loss resulting from usage thereof.

Printer Identifier	Lexmark X4850 Wireless All-In-One
Printer Manufacturer	Lexmark
Cartridge Identifier	42A, 41A
Cartridge Type	Integral ink supply and print head
Date Tested	March 3, 2008 to March 4, 2008
EOL Criteria	Fade
Print mode used	Continuous
Paper Size	4" x 6" borderless photo on 210 x 297 mm photo paper
Media used	Lexmark PerfectFinish Photo Paper (19Y0205)
Driver version	Driver Version=05/29/2007, 1.0.5.1 The following driver settings were changed from default: Quality/Speed = Changed to Photo from Automatic Paper Type = Changed to Use my choice: Lexmark PerfectFinish Photo from Use paper sensor Paper Size = Changed to A4 (210 x 297 mm) from Letter (8 ½ x 11 in)

Declaration of Yield

Inkjet Cartridge Yield when tested in Lexmark X4850 Wireless All-In-One:

Using the QualityLogic Color Photo test suite provides the following results:

Average Tri-Color Cartridge Yield – Up to 56 standard pages

Estimated supplemental K (Black) Cartridge Yield – Up to 3,262 standard pages

Values obtained by continuous printing. Declared yield values in accordance with QualityLogic Color Photo Yield Test Methodology

QualityLogic Color Photo Suite

Cartridge Identifier	Color	Average (pages)	90% Lower Confidence (pages)	Number used in calculations/test
18C0033	Tri-color	58	56	9/12
18C0032*	K (Black)	3,593	3,262	3/3

* Denotes supplemental cartridge

Sub-Appendix – Test Pages

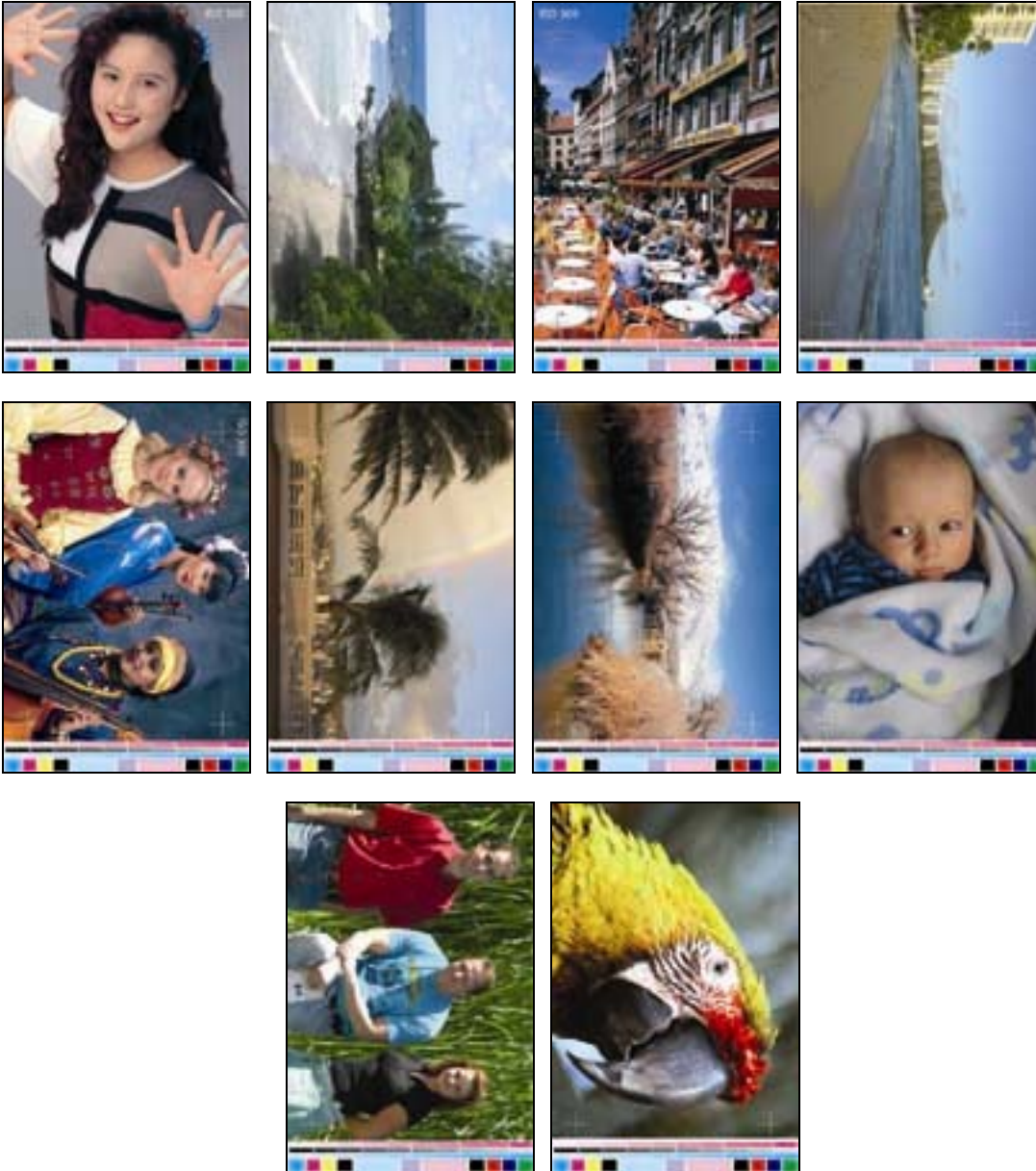
ISO/ ISO/IEC 24712 Test Suite



ISO/IEC 19752 Test Page



QualityLogic Photo Test Suite



Test results and cost information provided by QualityLogic. Tests were performed under laboratory conditions and end-user's results may vary. Test results, ink cartridge pricing and cost per page pricing subject to change without notice by QualityLogic. All test results and cost information are provided "as-is," "as available," and all warranties, expressed or implied are hereby disclaimed. Users of the information contained herein assume full responsibility and risk of loss resulting from usage thereof.