



**Cost of Ink Per Page Analysis
Spain**

August 2011

Includes ink cartridge pricing provided by



TABLE OF CONTENTS

Cost of Ink Per Page	5
Spain: Mono - Cost of Ink Per Page.....	5
Spain: Color - Cost of Ink Per Page.....	6
Spain: Photo - Cost of Ink Per Page	7
Methodology for Calculation of Cost of Ink Per Page.....	8
A. QualityLogic Yield Declarations	8
C. Cost of Ink Per Page – Per Cartridge	14
D. Cost of Ink Per Page	17
Appendix A: Test Methodology Summary	21
Appendix B: QualityLogic Declared Yield Test Results	24
Appendix C: Test Pages	80

Summary and Scope of Analysis

For more than 25 years, QualityLogic Inc. has been a premier developer and provider of essential testing solutions to companies that design, build, or purchase printers and printing technology. Our products and services help our customers understand how the products they make or buy conform to specifications, or compare to reference implementations or competing products. We are active members of international standards organizations including ISO and Ecma International, and provide testing assistance to leading technology publications who publish printer reviews.

At the request of Eastman Kodak Company, QualityLogic calculated and compared the Cost of Ink Per Page (CoIPP) of the Kodak of All-in-One Printers to 19 competing printers selected by Kodak. Kodak's intent was to select printers with significant market share from leading manufacturers.

Monochrome and color cartridge yields for all printers were determined following ISO yield standards, and photo yields were determined using QualityLogic's photo yield methodology*.

Ink prices for printers in the test were provided to QualityLogic by gap intelligence**, a premier global provider of market intelligence. gap intelligence provided the manufacturer's suggested retail price (MSRP) for each of the cartridges in the test based on information collected through Q1 2011. If the cartridge price wasn't available on the manufacturer's website, gap intelligence provided an average of three reseller street prices.

For this report, complete sets of standard as-shipped-in-box cartridges or the standard-yield ink cartridges were evaluated for the purpose of making like-basis comparisons between all printers. For the printer where a complete set of standard cartridges was not available, a complete set of high-yield cartridges was evaluated. Ink cost comparisons are made using single quantity cartridge pricing (i.e., no multi-packs, combo packs, value packs or special promotions.)

Although there are many factors in total cost of ownership, Cost of Ink Per Page (CoIPP) is an important factor when evaluating total cost of ownership with printer systems.

Cost of Ink Per Page was calculated by dividing these cartridge prices by the yield of each cartridge in the test.

* All references of 'photo' in this report refer to 4x6 inch (approximately 10 x 15 cm) borderless photos.

** gap intelligence believes that the list pricing information provided is accurate; however, it is not responsible for any errors, inaccuracies, or variances caused by changes made outside of its defined survey period (Q1 2011).

The following printers and corresponding ink cartridges were included in this Cost of Ink Per Page analysis:

Company	Printer	Cartridges
Kodak	ESP 5250 ESP 6150 ESP 7250 ESP 9250 ESP C310 ESP C315 ESP Office 2170	Black Ink 10B, Color Ink 10C Black Ink 10B, Color Ink 10C Black Ink 10B, Color Ink 10C Black Ink 10B, Color Ink 10C Black Ink 30, Color Ink 30 Black Ink 30, Color Ink 30 Black Ink 30, Color Ink 30
Brother	DCP-195C MFC-5490cn	LC980BK, LC980C, LC980M, LC980Y LC1100BK, LC1100C, LC1100M, LC1100Y
Canon	PIXMA MG6150 PIXMA MP260 PIXMA MP620	PGI-525PGBK, CLI-526C, CLI-526M, CLI-526Y, CLI-526BK, CLI-526GY PG-510, CL-511 PGI-520BK, CLI-521C, CLI-521M, CLI-521Y, CLI-521BK
Epson	Stylus Photo PX650 Stylus SX115 Stylus SX125 Stylus SX215 Stylus SX600FW	T0801, T0802, T0803, T0804, T0805, T0806 T0891, T0892, T0893, T0894 T1281, T1282, T1283, T1284 T0891, T0892, T0893, T0894 T0711, T0712, T0713, T0714
Hewlett-Packard	Deskjet 1050 Officejet 6500 Photosmart B109n Deskjet F2420 Deskjet F4580 Officejet J4680 Photosmart Premium	HP 301 - CH561EE, CH562EE HP920XL ¹ - CD975AE, CD972AE, CD973AE, CD974AE HP 364- CB316EE, CB318EE, CB319EE, CB320EE HP 300 - CC640EE, CC643EE HP 300 - CC640EE, CC643EE HP 901 - CC653AE, CC656AE HP 364 - CB316EE, CB317EE, CB318EE, CB319EE, CB320EE
Lexmark	Intuition S505 X4850	100 Black, Cyan, Magenta, Yellow 41A, 42A ²

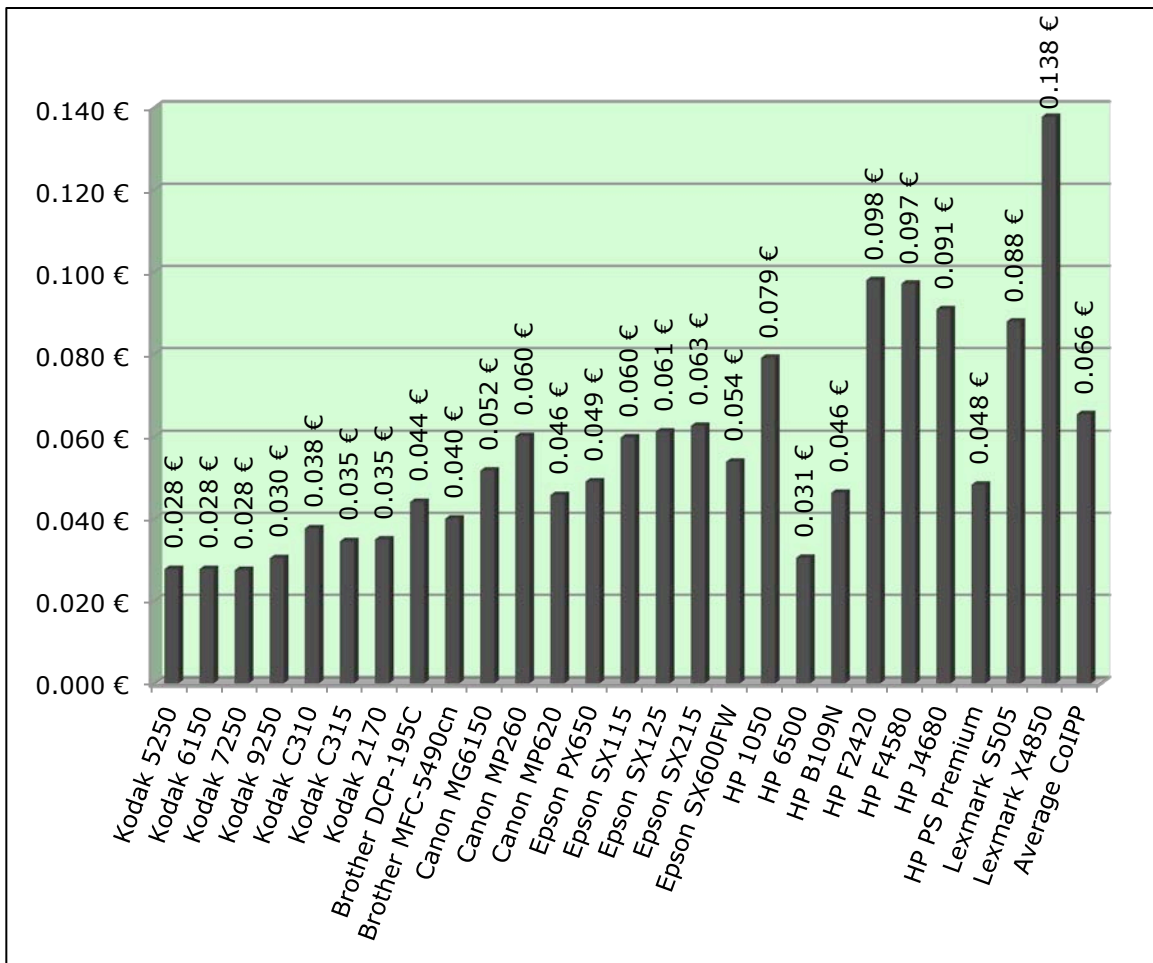
¹ Only XL cartridges are available in the EU for cyan, magenta and yellow. For consistency, tested with an XL black as well.

² The pricing in this report reflects the lower priced Lexmark 42 and 41 cartridges.

Cost of Ink Per Page

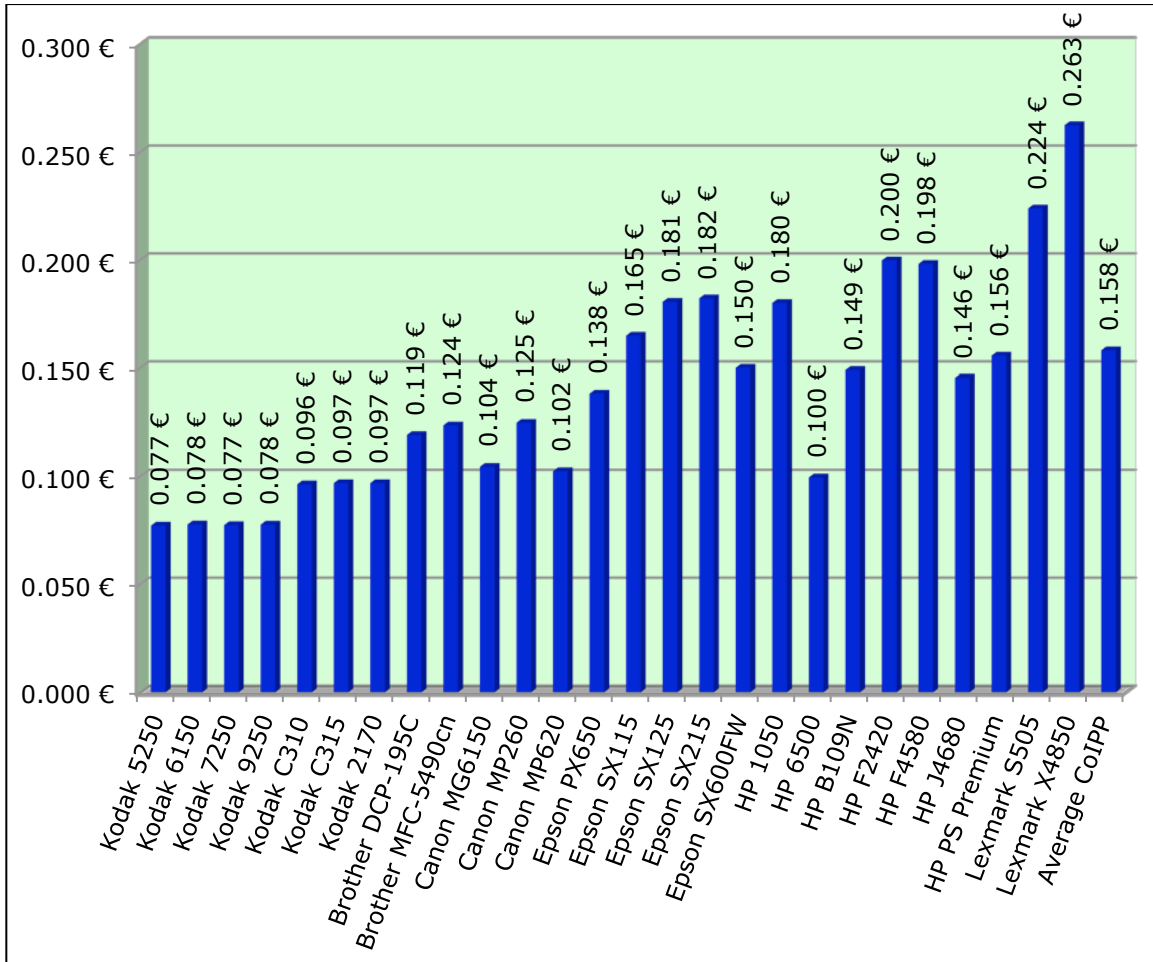
The following charts summarize the Cost of Ink Per Page for the printers tested using cartridge prices from Spain. There are three charts presented: separate charts for monochrome, color and photo printing. Details of how these costs were calculated can be found in the "Methodology for Calculation of Cost of Ink Per Page" following these graphs.

Spain: Mono - Cost of Ink Per Page
(Euro)



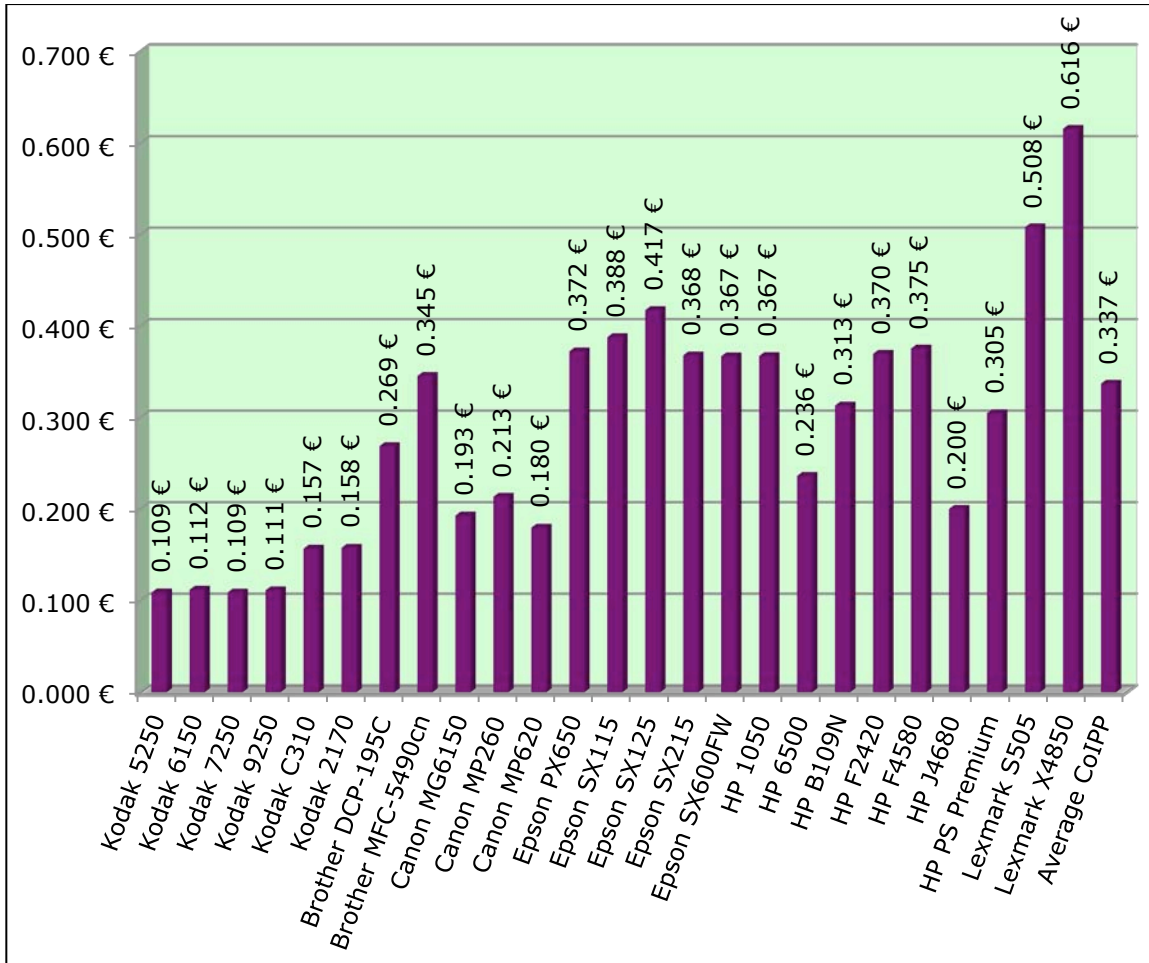
Note: Average CoIPP (Cost of Ink Per Page) is based on the average cost of ink for all non-Kodak printer models included in this report.

Spain: Color - Cost of Ink Per Page
(Euro)



Note: Average CoIPP (Cost of Ink Per Page) is based on the average cost of ink for all non-Kodak printer models included in this report.

Spain: Photo - Cost of Ink Per Page (Euro)



Note: Average CoIPP (Cost of Ink Per Page) is based on the average cost of ink for all non-Kodak printer models included in this report.

*No photo test was performed on the Kodak ESP C315 printer.

Methodology for Calculation of Cost of Ink Per Page

The following is a step-by-step outline of how QualityLogic, using standardized yield testing methodologies and standard pricing information provided by gap intelligence, executed this 'Cost of Ink Per Page' test for Kodak.

A. QualityLogic Yield Declarations

Yield testing is a process by which the target printers are operated with their ink or toner cartridges to deplete the amount of ink/toner, and then pages printed are counted to determine the number of pages each cartridge yields. The requirements and operating conditions of such testing are determined by a standard set of testing criteria that will provide an objective and repeatable result.

QualityLogic is a leader worldwide in providing yield testing services. We support and follow the ISO (International Standards Organization) standards for mono and color testing. Use of the ISO standards for yield testing is also supported by leading manufacturers, including Canon, Dell, Epson, HP, IBM, Kodak, Lexmark, Oki Data, Pitney Bowes, Ricoh, Toshiba, Xerox, and others.

The photo yield testing included in this report was completed using the QualityLogic photo yield methodology. ISO announced the release of the new ISO/IEC 29102 photo yield standard as this report was being finalized. Kodak and QualityLogic are evaluating the new ISO standard for use with future testing.

Key provisions of ISO and QualityLogic standards include:

- Standard test suites
- Minimum of nine cartridges across three printers representative of products in open market
- Clear, objective end-of-life criteria
- Controlled test environment – temperature, continuous printing
- Yield reporting requirement well defined

The following pages contain tables that relate to yield testing results. The tables show the number of pages per cartridge that can be expected with 90 percent confidence based on our testing. Numbers in black indicate primary cartridges – any cartridge where a minimum of nine cartridges across three printers could be exhausted. Supplemental cartridges are indicated by red numbers and represent those cartridges that are secondary to the purpose of the test. Although supplemental cartridges are not the key focus in the tests as shown, they are included in the test reports to ensure we get a complete understanding of the ink being used.

Generally, the 'primary' cartridges for each category of testing are:

- Mono ink – the black cartridge
- Color ink – all full density cartridges containing cyan, magenta, yellow and black
- Photo ink – color cartridges or others where nine cartridges were exhausted

QualityLogic performed yield tests and provided yield test reports for all cartridges for models listed below (with some of the same models also available in Europe and in North America). Each table has abbreviated sub-headings that represent the specific ink cartridge types as follows:

CMY = A single cartridge containing cyan, magenta and yellow
C = Cyan
M = Magenta
Y = Yellow
K1 = Black
K2 = A second black cartridge
LC = Light or photo cyan
LM = Light or photo magenta
GY = Grey

These yield numbers apply to printers included in this analysis. Yields of primary and supplemental cartridges are reported, and the details of these results can be found in Appendix B.

	Mono Ink Yield								
	CMY	C	M	Y	K1	K2	LC	LM	GY
Kodak 5250	3514				440				
Kodak 6150	3511				440				
Kodak 7250	3546				444				
Kodak 9250	2338				439				
Kodak C310	1725				344				
Kodak C315	2243				358				
Kodak 2170	2150				356				
Brother DCP-195C		7830	13987	9822	362				
Brother MFC-5490cn		8059	11730	8867	535				
Canon MG6150		2688	3007	3911	357	5785			3710
Canon MP260	2969				257				
Canon MP620		3095	3463	4514	359	6882			
Epson PX650		3391	3017	4384	367		3126	3707	
Epson SX115		1155	1553	1960	201				
Epson SX125		2638	3572	3549	204				
Epson SX215		1111	1281	1552	199				
Epson SX600FW		2579	4366	2678	279				
HP 1050	1865				200				
HP 6500		5264	5992	6726	1126				
HP B109N		2384	2524	3121	314				
HP F2420	1158				196				
HP F4580	1222				196				
HP J4680	2494				206				
HP PS Premium		2332	2643	2982	313	5609			
Lexmark S505		4018	4015	4515	252				
Lexmark X4850	2759				223				

Note: Kodak's 10C color cartridge includes black and protective inks.

Test results and cost information provided by QualityLogic. Tests were performed under laboratory conditions and end-user's results may vary. Test results, ink cartridge pricing and cost per page pricing subject to change without notice by QualityLogic. All test results and cost information are provided "as-is," "as available," and all warranties, expressed or implied, are hereby disclaimed. Users of the information contained herein assume full responsibility and risk of loss resulting from usage thereof.

	Color Ink Yield								
	CMY	C	M	Y	K1	K2	LC	LM	GY
Kodak 5250	427				285				
Kodak 6150	424				283				
Kodak 7250	426				284				
Kodak 9250	425				283				
Kodak C310	292				222				
Kodak C315	290				221				
Kodak 2170	290				221				
Brother DCP-195C		388	346	282	336				
Brother MFC-5490cn		433	360	314	531				
Canon MG6150		562	519	536	341	6014			3659
Canon MP260	256				260				
Canon MP620		542	518	527	325	3737			
Epson PX650		1022	481	564	341		377	758	
Epson SX115		259	151	250	173				
Epson SX125		269	160	257	186				
Epson SX215		188	140	227	178				
Epson SX600FW		380	272	410	251				
HP 1050	158				193				
HP 6500		528	532	506	1089				
HP B109N		269	269	269	293				
HP F2420	158				201				
HP F4580	163				196				
HP J4680	344				201				
HP PS Premium		272	272	268	284	1627			
Lexmark S505		290	236	272	228				
Lexmark X4850	258				214				

Note: Kodak's 10C color cartridge includes black and protective inks.

Test results and cost information provided by QualityLogic. Tests were performed under laboratory conditions and end-user's results may vary. Test results, ink cartridge pricing and cost per page pricing subject to change without notice by QualityLogic. All test results and cost information are provided "as-is," "as available," and all warranties, expressed or implied, are hereby disclaimed. Users of the information contained herein assume full responsibility and risk of loss resulting from usage thereof.

	Photo Ink Yield								
	CMY	C	M	Y	K1	K2	LC	LM	GY
Kodak 5250	179				1197				
Kodak 6150	173				1275				
Kodak 7250	179				1205				
Kodak 9250	176				1117				
Kodak C310	104				795				
Kodak 2170	104				743				
Brother DCP-195C		83	118	85	5636				
Brother MFC-5490cn		87	101	88	8649				
Canon MG6150		286	328	324	1731	673			177
Canon MP260	90				1355				
Canon MP620		197	219	212	1772	571			
Epson PX650		402	319	205	402		101	115	
Epson SX115		58	58	88	322				
Epson SX125		62	60	92	344				
Epson SX215		57	59	113	324				
Epson SX600FW		105	106	127	233				
HP 1050	47				2511				
HP 6500		148	206	159	7487				
HP B109N		87	132	86	1772				
HP F2420	53				1428				
HP F4580	52				1590				
HP J4680	110				1831				
HP PS Premium		98	177	136	1422	154			
Lexmark S505		64	77	91	603				
Lexmark X4850	56				3262				

Note: Kodak's color cartridge includes black and protective inks.
 *No photo test was performed on the Kodak ESP C315 printer.

Test results and cost information provided by QualityLogic. Tests were performed under laboratory conditions and end-user's results may vary. Test results, ink cartridge pricing and cost per page pricing subject to change without notice by QualityLogic. All test results and cost information are provided "as-is," "as available," and all warranties, expressed or implied, are hereby disclaimed. Users of the information contained herein assume full responsibility and risk of loss resulting from usage thereof.

B. Ink Cartridge Pricing

Cartridge prices used in this Cost of Ink Per Page analysis were researched and provided to QualityLogic by gap intelligence as of Q1 2011. gap intelligence's methodology for data collection used the manufacturer's website for Spain. For this report, complete sets of standard as-shipped-in-box cartridges or the standard-yield ink cartridges were evaluated for the purpose of making like-basis comparisons between all printers. For the printer where a complete set of standard cartridges was not available, a complete set of high-yield cartridges was evaluated. Ink cost comparisons are made using single quantity cartridge pricing (i.e., no multi-packs, combo packs, value packs or special promotions.) Below is the summary of the ink cartridges and their individual prices.

Ink Cartridge Pricing									
	CMY	C	M	Y	K1	K2	LC	LM	GY
Kodak 5250	17.99 €				9.99 €				
Kodak 6150	17.99 €				9.99 €				
Kodak 7250	17.99 €				9.99 €				
Kodak 9250	17.99 €				9.99 €				
Kodak C310	14.99 €				9.99 €				
Kodak C315	14.99 €				9.99 €				
Kodak 2170	14.99 €				9.99 €				
Brother DCP-195C		8.24 €	8.24 €	8.24 €	15.09 €				
Brother MFC-5490cn		10.48 €	10.48 €	10.48 €	19.65 €				
Canon MG6150		11.06 €	11.06 €	11.06 €	12.95 €	11.06 €			11.06 €
Canon MP260	18.28 €				13.89 €				
Canon MP620		10.64 €	10.64 €	10.64 €	12.69 €	11.31 €			
Epson PX650		11.79 €	11.79 €	11.79 €	11.79 €		11.79 €	11.79 €	
Epson SX115		7.86 €	7.86 €	7.86 €	8.84 €				
Epson SX125		8.84 €	8.84 €	8.84 €	10.81 €				
Epson SX215		7.86 €	7.86 €	7.86 €	8.84 €				
Epson SX600FW		11.79 €	11.79 €	11.79 €	11.79 €				
HP 1050	17.00 €				14.00 €				
HP 6500		13.00 €	13.00 €	13.00 €	27.00 €				
HP B109N		10.00 €	10.00 €	10.00 €	11.00 €				
HP F2420	19.00 €				16.00 €				
HP F4580	19.00 €				16.00 €				
HP J4680	21.00 €				17.00 €				
HP PS Premium		10.00 €	10.00 €	10.00 €	11.00 €	10.00 €			
Lexmark S505		11.99 €	11.99 €	11.99 €	19.99 €				
Lexmark X4850	33.99 €				27.99 €				

Euro

Source: gap intelligence

C. Cost of Ink Per Page – Per Cartridge

QualityLogic calculated the Cost of Ink Per Page per cartridge by dividing the price of each cartridge (as defined by the gap intelligence localized cartridge price, noted above in Section B) by the yield for each cartridge in each model (as defined above in Section A). This calculation results in the Cost of Ink Per Page per cartridge for each test mode: mono, color and photo.

$$\frac{\text{Price per cartridge}}{\text{Ink yield (in number of pages/photos)}} = \text{Cost of Ink Per Page – per cartridge}$$

Mono Cost of Ink Per Individual Cartridge per Page (Euro)

	Mono Ink Cost								
	CMY	C	M	Y	K1	K2	LC	LM	GY
Kodak 5250	0.005 €				0.023 €				
Kodak 6150	0.005 €				0.023 €				
Kodak 7250	0.005 €				0.023 €				
Kodak 9250	0.008 €				0.023 €				
Kodak C310	0.009 €				0.029 €				
Kodak C315	0.007 €				0.028 €				
Kodak 2170	0.007 €				0.028 €				
Brother DCP-195C		0.001 €	0.001 €	0.001 €	0.042 €				
Brother MFC-5490cn		0.001 €	0.001 €	0.001 €	0.037 €				
Canon MG6150		0.004 €	0.004 €	0.003 €	0.036 €	0.002 €			0.003 €
Canon MP260	0.006 €				0.054 €				
Canon MP620		0.003 €	0.003 €	0.002 €	0.035 €	0.002 €			
Epson PX650		0.003 €	0.004 €	0.003 €	0.032 €		0.004 €	0.003 €	
Epson SX115		0.007 €	0.005 €	0.004 €	0.044 €				
Epson SX125		0.003 €	0.002 €	0.002 €	0.053 €				
Epson SX215		0.007 €	0.006 €	0.005 €	0.044 €				
Epson SX600FW		0.005 €	0.003 €	0.004 €	0.042 €				
HP 1050	0.009 €				0.070 €				
HP 6500		0.002 €	0.002 €	0.002 €	0.024 €				
HP B109N		0.004 €	0.004 €	0.003 €	0.035 €				
HP F2420	0.016 €				0.082 €				
HP F4580	0.016 €				0.082 €				
HP J4680	0.008 €				0.083 €				
HP PS Premium		0.004 €	0.004 €	0.003 €	0.035 €	0.002 €			
Lexmark S505		0.003 €	0.003 €	0.003 €	0.079 €				
Lexmark X4850	0.012 €				0.126 €				

Test results and cost information provided by QualityLogic. Tests were performed under laboratory conditions and end-user's results may vary. Test results, ink cartridge pricing and cost per page pricing subject to change without notice by QualityLogic. All test results and cost information are provided "as-is," "as available," and all warranties, expressed or implied, are hereby disclaimed. Users of the information contained herein assume full responsibility and risk of loss resulting from usage thereof.

Color Cost of Ink Per Individual Cartridge per Page
(Euro)

	Color Ink Cost								
	CMY	C	M	Y	K1	K2	LC	LM	GY
Kodak 5250	0.042 €				0.035 €				
Kodak 6150	0.042 €				0.035 €				
Kodak 7250	0.042 €				0.035 €				
Kodak 9250	0.042 €				0.035 €				
Kodak C310	0.051 €				0.045 €				
Kodak C315	0.052 €				0.045 €				
Kodak 2170	0.052 €				0.045 €				
Brother DCP-195C		0.021 €	0.024 €	0.029 €	0.045 €				
Brother MFC-5490cn		0.024 €	0.029 €	0.033 €	0.037 €				
Canon MG6150		0.020 €	0.021 €	0.021 €	0.038 €	0.002 €			0.003 €
Canon MP260	0.071 €				0.053 €				
Canon MP620		0.020 €	0.021 €	0.020 €	0.039 €	0.003 €			
Epson PX650		0.012 €	0.025 €	0.021 €	0.035 €		0.031 €	0.016 €	
Epson SX115		0.030 €	0.052 €	0.031 €	0.051 €				
Epson SX125		0.033 €	0.055 €	0.034 €	0.058 €				
Epson SX215		0.042 €	0.056 €	0.035 €	0.050 €				
Epson SX600FW		0.031 €	0.043 €	0.029 €	0.047 €				
HP 1050	0.108 €				0.073 €				
HP 6500		0.025 €	0.024 €	0.026 €	0.025 €				
HP B109N		0.037 €	0.037 €	0.037 €	0.038 €				
HP F2420	0.120 €				0.080 €				
HP F4580	0.117 €				0.082 €				
HP J4680	0.061 €				0.085 €				
HP PS Premium		0.037 €	0.037 €	0.037 €	0.039 €	0.006 €			
Lexmark S505		0.041 €	0.051 €	0.044 €	0.088 €				
Lexmark X4850	0.132 €				0.131 €				

Test results and cost information provided by QualityLogic. Tests were performed under laboratory conditions and end-user's results may vary. Test results, ink cartridge pricing and cost per page pricing subject to change without notice by QualityLogic. All test results and cost information are provided "as-is," "as available," and all warranties, expressed or implied, are hereby disclaimed. Users of the information contained herein assume full responsibility and risk of loss resulting from usage thereof.

Photo Cost of Ink Per Individual Cartridge per Page
(Euro)

	Photo Ink Cost								
	CMY	C	M	Y	K1	K2	LC	LM	GY
Kodak 5250	0.101 €				0.008 €				
Kodak 6150	0.104 €				0.008 €				
Kodak 7250	0.101 €				0.008 €				
Kodak 9250	0.102 €				0.009 €				
Kodak C310	0.144 €				0.013 €				
Kodak 2170	0.144 €				0.013 €				
Brother DCP-195C		0.099 €	0.070 €	0.097 €	0.003 €				
Brother MFC-5490cn		0.120 €	0.104 €	0.119 €	0.002 €				
Canon MG6150		0.039 €	0.034 €	0.034 €	0.007 €	0.016 €			0.062 €
Canon MP260	0.203 €				0.010 €				
Canon MP620		0.054 €	0.049 €	0.050 €	0.007 €	0.020 €			
Epson PX650		0.029 €	0.037 €	0.058 €	0.029 €		0.117 €	0.103 €	
Epson SX115		0.136 €	0.136 €	0.089 €	0.027 €				
Epson SX125		0.143 €	0.147 €	0.096 €	0.031 €				
Epson SX215		0.138 €	0.133 €	0.070 €	0.027 €				
Epson SX600FW		0.112 €	0.111 €	0.093 €	0.051 €				
HP 1050	0.362 €				0.006 €				
HP 6500		0.088 €	0.063 €	0.082 €	0.004 €				
HP B109N		0.115 €	0.076 €	0.116 €	0.006 €				
HP F2420	0.358 €				0.011 €				
HP F4580	0.365 €				0.010 €				
HP J4680	0.191 €				0.009 €				
HP PS Premium		0.102 €	0.056 €	0.074 €	0.008 €	0.065 €			
Lexmark S505		0.187 €	0.156 €	0.132 €	0.033 €				
Lexmark X4850	0.607 €				0.009 €				

*No photo test was performed on the Kodak ESP C315 printer.

Test results and cost information provided by QualityLogic. Tests were performed under laboratory conditions and end-user's results may vary. Test results, ink cartridge pricing and cost per page pricing subject to change without notice by QualityLogic. All test results and cost information are provided "as-is," "as available," and all warranties, expressed or implied, are hereby disclaimed. Users of the information contained herein assume full responsibility and risk of loss resulting from usage thereof.

D. Cost of Ink Per Page

Cost of Ink Per Page for each printer is calculated by summing the Cost of Ink Per Page per cartridge for each cartridge tested in a given printer model (as determined above in Section C).

$$\text{Cost of Ink Per Page} = \text{CMY} + \text{C} + \text{M} + \text{Y} + \text{K1} + \text{K2} + \text{LC} + \text{LM} + \text{GY}$$

The Cost of Ink Per Page per printer is reflected below. Note that, due to rounding, the total CoIPP may not match the individual ink cartridge costs.

Mono Cost of Ink Per Individual Cartridge and Total Cost of Ink Per Page
(Euro)

	Mono Ink Cost									Mono CoIPP
	CMY	C	M	Y	K1	K2	LC	LM	GY	
Kodak 5250	0.005 €				0.023 €					0.028 €
Kodak 6150	0.005 €				0.023 €					0.028 €
Kodak 7250	0.005 €				0.023 €					0.028 €
Kodak 9250	0.008 €				0.023 €					0.030 €
Kodak C310	0.009 €				0.029 €					0.038 €
Kodak C315	0.007 €				0.028 €					0.035 €
Kodak 2170	0.007 €				0.028 €					0.035 €
Brother DCP-195C		0.001 €	0.001 €	0.001 €	0.042 €					0.044 €
Brother MFC-5490cn		0.001 €	0.001 €	0.001 €	0.037 €					0.040 €
Canon MG6150		0.004 €	0.004 €	0.003 €	0.036 €	0.002 €			0.003 €	0.052 €
Canon MP260	0.006 €				0.054 €					0.060 €
Canon MP620		0.003 €	0.003 €	0.002 €	0.035 €	0.002 €				0.046 €
Epson PX650		0.003 €	0.004 €	0.003 €	0.032 €		0.004 €	0.003 €		0.049 €
Epson SX115		0.007 €	0.005 €	0.004 €	0.044 €					0.060 €
Epson SX125		0.003 €	0.002 €	0.002 €	0.053 €					0.061 €
Epson SX215		0.007 €	0.006 €	0.005 €	0.044 €					0.063 €
Epson SX600FW		0.005 €	0.003 €	0.004 €	0.042 €					0.054 €
HP 1050	0.009 €				0.070 €					0.079 €
HP 6500		0.002 €	0.002 €	0.002 €	0.024 €					0.031 €
HP B109N		0.004 €	0.004 €	0.003 €	0.035 €					0.046 €
HP F2420	0.016 €				0.082 €					0.098 €
HP F4580	0.016 €				0.082 €					0.097 €
HP J4680	0.008 €				0.083 €					0.091 €
HP PS Premium		0.004 €	0.004 €	0.003 €	0.035 €	0.002 €				0.048 €
Lexmark S505		0.003 €	0.003 €	0.003 €	0.079 €					0.088 €
Lexmark X4850	0.012 €				0.126 €					0.138 €

Color Cost of Ink Per Individual Cartridge and Total Cost of Ink Per Page
(Euro)

	Color Ink Cost									Color CoIPP
	CMY	C	M	Y	K1	K2	LC	LM	GY	
Kodak 5250	0.042 €				0.035 €					0.077 €
Kodak 6150	0.042 €				0.035 €					0.078 €
Kodak 7250	0.042 €				0.035 €					0.077 €
Kodak 9250	0.042 €				0.035 €					0.078 €
Kodak C310	0.051 €				0.045 €					0.096 €
Kodak C315	0.052 €				0.045 €					0.097 €
Kodak 2170	0.052 €				0.045 €					0.097 €
Brother DCP-195C		0.021 €	0.024 €	0.029 €	0.045 €					0.119 €
Brother MFC-5490cn		0.024 €	0.029 €	0.033 €	0.037 €					0.124 €
Canon MG6150		0.020 €	0.021 €	0.021 €	0.038 €	0.002 €			0.003 €	0.104 €
Canon MP260	0.071 €				0.053 €					0.125 €
Canon MP620		0.020 €	0.021 €	0.020 €	0.039 €	0.003 €				0.102 €
Epson PX650		0.012 €	0.025 €	0.021 €	0.035 €		0.031 €	0.016 €		0.138 €
Epson SX115		0.030 €	0.052 €	0.031 €	0.051 €					0.165 €
Epson SX125		0.033 €	0.055 €	0.034 €	0.058 €					0.181 €
Epson SX215		0.042 €	0.056 €	0.035 €	0.050 €					0.182 €
Epson SX600FW		0.031 €	0.043 €	0.029 €	0.047 €					0.150 €
HP 1050	0.108 €				0.073 €					0.180 €
HP 6500		0.025 €	0.024 €	0.026 €	0.025 €					0.100 €
HP B109N		0.037 €	0.037 €	0.037 €	0.038 €					0.149 €
HP F2420	0.120 €				0.080 €					0.200 €
HP F4580	0.117 €				0.082 €					0.198 €
HP J4680	0.061 €				0.085 €					0.146 €
HP PS Premium		0.037 €	0.037 €	0.037 €	0.039 €	0.006 €				0.156 €
Lexmark S505		0.041 €	0.051 €	0.044 €	0.088 €					0.224 €
Lexmark X4850	0.132 €				0.131 €					0.263 €

Test results and cost information provided by QualityLogic. Tests were performed under laboratory conditions and end-user's results may vary. Test results, ink cartridge pricing and cost per page pricing subject to change without notice by QualityLogic. All test results and cost information are provided "as-is," "as available," and all warranties, expressed or implied, are hereby disclaimed. Users of the information contained herein assume full responsibility and risk of loss resulting from usage thereof.

Photo Cost of Ink Per Individual Cartridge and Total Cost of Ink Per Page
(Euro)

	Photo Ink Cost									Photo
	CMY	C	M	Y	K1	K2	LC	LM	GY	CoIPP
Kodak 5250	0.101 €				0.008 €					0.109 €
Kodak 6150	0.104 €				0.008 €					0.112 €
Kodak 7250	0.101 €				0.008 €					0.109 €
Kodak 9250	0.102 €				0.009 €					0.111 €
Kodak C310	0.144 €				0.013 €					0.157 €
Kodak 2170	0.144 €				0.013 €					0.158 €
Brother DCP-195C		0.099 €	0.070 €	0.097 €	0.003 €					0.269 €
Brother MFC-5490cn		0.120 €	0.104 €	0.119 €	0.002 €					0.345 €
Canon MG6150		0.039 €	0.034 €	0.034 €	0.007 €	0.016 €			0.062 €	0.193 €
Canon MP260	0.203 €				0.010 €					0.213 €
Canon MP620		0.054 €	0.049 €	0.050 €	0.007 €	0.020 €				0.180 €
Epson PX650		0.029 €	0.037 €	0.058 €	0.029 €		0.117 €	0.103 €		0.372 €
Epson SX115		0.136 €	0.136 €	0.089 €	0.027 €					0.388 €
Epson SX125		0.143 €	0.147 €	0.096 €	0.031 €					0.417 €
Epson SX215		0.138 €	0.133 €	0.070 €	0.027 €					0.368 €
Epson SX600FW		0.112 €	0.111 €	0.093 €	0.051 €					0.367 €
HP 1050	0.362 €				0.006 €					0.367 €
HP 6500		0.088 €	0.063 €	0.082 €	0.004 €					0.236 €
HP B109N		0.115 €	0.076 €	0.116 €	0.006 €					0.313 €
HP F2420	0.358 €				0.011 €					0.370 €
HP F4580	0.365 €				0.010 €					0.375 €
HP J4680	0.191 €				0.009 €					0.200 €
HP PS Premium		0.102 €	0.056 €	0.074 €	0.008 €	0.065 €				0.305 €
Lexmark S505		0.187 €	0.156 €	0.132 €	0.033 €					0.508 €
Lexmark X4850	0.607 €				0.009 €					0.616 €

*No photo test was performed on the Kodak ESP C315 printer.

Test results and cost information provided by QualityLogic. Tests were performed under laboratory conditions and end-user's results may vary. Test results, ink cartridge pricing and cost per page pricing subject to change without notice by QualityLogic. All test results and cost information are provided "as-is," "as available," and all warranties, expressed or implied, are hereby disclaimed. Users of the information contained herein assume full responsibility and risk of loss resulting from usage thereof.

Contact Information

For information regarding this Cost of Ink Per Page Analysis, please contact the following person/s:

QualityLogic:



QualityLogic

Dave Jollota
President & CEO
Phone: +1-805-531-9030 x122
djollota@qualitylogic.com

Gary James
General Manager, Testing Services Group
Phone: +1-805-531-9030 x151
gjames@qualitylogic.com

gap intelligence:



gap intelligence

Tom Young
Director of Business Development
Phone: +1-619-574-1100 x228
Fax: +1-619-574-6600
tyoung@gapintelligence.com

gap intelligence - Company Overview

gap intelligence is a global leader in providing timely, actionable competitive intelligence solutions to help manufacturers in the digital imaging space stay ahead of the competition. gap intelligence printer hardware and supplies databases are updated on a weekly basis with street pricing and promotional data. Dedicated industry analysts publish insightful, analytical reports and tools to help clients make smarter decisions and respond to market changes faster.

Appendix A: Test Methodology Summary

In order to obtain these yield results, two different methodologies were used in combination with three test suites. This section will detail the common areas between the methodologies, the differences between them, and highlight some key terms from ISO/IEC 24711, 24712, and 19752 that are particularly important to understand when reviewing these yield claims.

Common Methodology and Definitions

Number of Printers Tested	Minimum of three
Number of Cartridges Tested	Minimum of nine of each primary cartridge
Temperature	Testing room average 23.0°C ± 2°C with all running average temperatures between 20.0°C and 26.0°C
Fade	Phenomenon in which a significant reduction in uniformity occurs due to ink depletion
Ink Out	Signal generated by the printing system when the usable ink in the system is depleted and the printer stops printing
End of Life (EOL)	A condition determined by one of two mechanisms: fade or ink out (only if ink out stops printing)
Semi-Continuous Printing	Printing in a continuous manner, pausing only for intra-job servicing, printer calibrations, paper changes, breaks, and end of work days
Declared Cartridge Yield	Cartridge Yield (in pages) that is at or below the lower 90% confidence bound of the average yield
Estimated Supplemental Cartridge Yield	Estimated yield for a supplemental cartridge (real or estimated with use of a proxy) calculated with at least three cartridges
Average Supplemental Cartridge Yield	Average yield for a supplemental cartridge where EOL was reached on at least nine cartridges (three per printer)
Proxy Cartridge	A primary cartridge of the same physical size as a supplemental cartridge which had a starting weight within +/- 10% of the supplemental cartridge starting weight

**Mono Ink Methodology and Definitions –
In accordance with ISO/IEC 24711, ISO/IEC 19752**

Test Suite	ISO/IEC 19752
Driver Set-up	See Color Ink Methodology. In addition, if a "Black Only" or "Text Only" mode was available in the driver, it was enabled
Paper	A4 or 8 ½" x 11" (see individual test reports)
Semi-Continuous Printing	Each copy of the test suite was printed as a separate one-page print job allowing for some intra-job servicing and calibration to take place
Primary Cartridge	The black cartridge or, if no black cartridge was present, the color cartridges that were used to develop composite black
Supplemental Cartridge	Any installed cartridge except the full density black cartridge, including the full density cyan, magenta, and yellow cartridges, as well as any photo cartridges
Individual Cartridge Yield	The number of test pages printed between cartridge installation and end of life

**Color Ink Methodology and Definitions –
In accordance with ISO/IEC 24711, ISO/IEC 24712**

Test Suite	ISO/IEC 24712
Driver Set-up	All image and print quality modifiers were set to their factory pre-set configuration for the printer and default installed condition for the driver. If auto media detection was available on the printer, it was disabled and media-type set to plain paper
Paper	A4 or 8 ½" by 11" (see individual test reports)
Semi-Continuous Printing	Each copy of the test suite was printed as a separate five-page print job allowing for some intra-job servicing and calibration to take place
Primary Cartridge	Cartridge containing full density black, cyan, magenta, or yellow, or a combination of full density cyan, magenta and yellow
Supplemental Cartridge	Cartridge other than the full density cyan, magenta, yellow and black cartridges
Individual Cartridge Yield	Value determined by counting the number of diagnostic pages (last page of the test page suite) printed between cartridge installation and end of life, and multiplying by five

**Photo Ink Methodology and Definitions –
In accordance with QualityLogic Color Photo Cartridge Yield Test
Methodology**

Test Suite	QualityLogic Color Photo Suite
Driver Set-up	The highest print quality mode readily available in the driver
Paper	The best photo paper recommended by each manufacturer. A4 or 8 ½" x 11" papers were used to print a borderless 4" x 6" (approximately 10 x 15 cm) photo. (See individual test reports)
Semi-Continuous Printing	Each copy of the test suite was printed as a separate 10-page print job allowing for some intra-job servicing and calibration to take place
Primary Cartridge	Cyan, magenta, yellow and photo cartridges or any cartridges containing these colors were considered as primary cartridges. In addition, any other cartridge that exhausted nine or more cartridges during the execution of nine of the above cartridges was considered as primary
Supplemental Cartridge	Any cartridge installed in the printer while printing photos that did not meet the definition of a primary cartridge was considered a supplemental cartridge
Individual Cartridge Yield	The number of test pages printed between cartridge installation and end of life

Appendix B: QualityLogic Declared Yield Test Results

The following data was extracted from the Yield Reports for each product tested – complete reports are available upon request.

Printer Identifier	Kodak ESP 5250
Printer Manufacturer	Kodak
Cartridge Identifier	Black Ink Cartridge 10B & Color Ink Cartridge 10C
Cartridge Type	Separate ink supply and print head
Date Tested	2/11/11 – 3/15/11
EOL Criteria	This printer has Ink Out which stops printing. Whichever came first, either Ink Out or Fade, was used as the EOL criteria.
Print mode used	Continuous
Paper Size	Letter
Media used	Xerox Business 4200, 92 Brightness 20lb. weight
Driver version	DriverVer=09/02/2010,5.4.6.3 The following driver settings were changed from default: Color Ink Test: Paper type = Changed to Plain Paper from Auto Select. Mono Test Settings: Paper type = Changed to Plain Paper from Auto Select. Color Printing = Changed to Black and White from Color.

Declaration of Yield

Inkjet Cartridge Yield when tested in Kodak ESP 5250:
Using the test suite defined in ISO/IEC 24712 provides the following results: Average K (Black) Cartridge Yield – Up to 285 standard pages Average Color Cartridge Yield – Up to 427 standard pages
Using the test page defined in ISO/IEC 19752 provides the following results: Average K (Black) Cartridge Yield – Up to 440 standard pages Estimated supplemental Color Cartridge Yield – Up to 3,514 standard pages
Values obtained by continuous printing. Declared yield values in accordance with ISO/IEC 24711

Using 24712 Test Suite						
Cartridge Identifier	Color	Average (pages)	Standard Deviation (pages)	90% Lower Confidence (pages)	Number used in calculations/test	Primary/ Supplemental
10B	K (Black)	286	2	285	12/15	Primary
10C	Color	428	3	427	9/9	Primary

Using 19752 Test Page						
Cartridge Identifier	Color	Average (pages)	Standard Deviation (pages)	90% Lower Confidence (pages)	Number used in calculations/test	Primary/ Supplemental
10B	K (Black)	441	2	440	24/24	Primary
10C	Color	3,526	7	3,514	3/3	Supplemental

Test results and cost information provided by QualityLogic. Tests were performed under laboratory conditions and end-user's results may vary. Test results, ink cartridge pricing and cost per page pricing subject to change without notice by QualityLogic. All test results and cost information are provided "as-is," "as available," and all warranties, expressed or implied, are hereby disclaimed. Users of the information contained herein assume full responsibility and risk of loss resulting from usage thereof.

Printer Identifier	Kodak ESP 5250
Printer Manufacturer	Kodak
Cartridge Identifier	Black Ink Cartridge 10B & Color Ink Cartridge 10C
Cartridge Type	Separate ink supply and print head
Date Tested	3/16/11 - 3/17/11
EOL Criteria	This printer has Ink Out which stops printing. Whichever came first, either Ink Out or Fade, was used as the EOL criteria.
Print mode used	Continuous
Paper Size	4" x 6" borderless photo on 8 ½" x 11" photo paper
Media used	Kodak Ultra Premium Photo Paper, High Gloss
Driver version	DriverVer=09/02/2010,5.4.6.3 The following driver settings were changed from default: Paper type = Changed to KODAK ULTRA Premium Photo- High Gloss from Plain Paper.

Declaration of Yield

Inkjet Cartridge Yield when tested in Kodak ESP 5250:

Using the QualityLogic Color Photo test suite provides the following results:

Average Color Cartridge Yield – Up to 179 standard pages

Estimated Supplemental K (Black) Cartridge Yield – Up to 1,197 standard pages

Values obtained by continuous printing. Declared yield values in accordance with QualityLogic Color Photo Yield Test Methodology

Cartridge Identifier	Color	Average (pages)	Standard Deviation (pages)	90% Lower Confidence (pages)	Number used in calculations/test	Primary/ Supplemental
10C	Color	179	1	179	9/9	Primary
10B	K (Black)	1,274	46	1,197	3/3	Supplemental

Printer Identifier	Kodak ESP 6150
Printer Manufacturer	Kodak
Cartridge Identifier	Black Ink Cartridge 10B & Color Ink Cartridge 10C
Cartridge Type	Separate ink supply and print head
Date Tested	5/4/10 - 5/19/10
EOL Criteria	This printer has Ink Out which stops printing. Whichever came first, either Ink Out or Fade, was used as the EOL criteria.
Print mode used	Continuous
Paper Size	Letter
Media used	Xerox Business 4200, 92 Brightness 20lb. weight
Driver version	Driver Version = 5.1.6.0 The following driver settings were changed from default: Color Ink Test: Paper type = Changed to Plain Paper from Auto Select Mono Ink Test: Paper type = Changed to Plain Paper from Auto Select Color printing = Changed to Black and White from Color

Declaration of Yield

Inkjet Cartridge Yield when tested in Kodak ESP 6150:

Using the test suite defined in ISO/IEC 24712 provides the following results:

Average K (Black) Cartridge Yield – Up to 283 standard pages

Average Color Cartridge Yield – Up to 424 standard pages

Using the test page defined in ISO/IEC 19752 provides the following results:

Average K (Black) Cartridge Yield – Up to 440 standard pages

Estimated supplemental Color Cartridge Yield – Up to 3,511 standard pages

Values obtained by continuous printing. Declared yield values in accordance with ISO/IEC 24711

Using 24712 Test Suite						
Cartridge Identifier	Color	Average (pages)	Standard Deviation (pages)	90% Lower Confidence (pages)	Number used in calculations/test	Primary/ Supplemental
10B	K (Black)	285	3	283	12/17	Primary
10C	Color	427	4	424	9/11	Primary

Using 19752 Test Page						
Cartridge Identifier	Color	Average (pages)	Standard Deviation (pages)	90% Lower Confidence (pages)	Number used in calculations/test	Primary/ Supplemental
10B	K (Black)	441	2	440	24/24	Primary
10C	Color	3,526	9	3,511	3/3	Supplemental

Printer Identifier	Kodak ESP 6150
Printer Manufacturer	Kodak
Cartridge Identifier	Black Ink Cartridge 10B & Color Ink Cartridge 10C
Cartridge Type	Separate ink supply and print head
Date Tested	5/21/10 - 5/24/10
EOL Criteria	This printer has Ink Out which stops printing. Whichever came first, either Ink Out or Fade, was used as the EOL criteria.
Print mode used	Continuous
Paper Size	4" x 6" borderless photo on 8 ½" x 11" photo paper
Media used	Kodak Ultra Premium Photo Paper, High Gloss
Driver version	Driver Version = 5.1.6.0 The following driver settings were changed from default: Paper type = Changed to KODAK ULTRA Premium Photo - High Gloss from Auto Select

Declaration of Yield

Inkjet Cartridge Yield when tested in Kodak ESP 6150:

Using the QualityLogic Color Photo test suite provides the following results:

Average Color Cartridge Yield – Up to 173 standard pages

Estimated Supplemental K (Black) Cartridge Yield – Up to 1,275 standard pages

Values obtained by continuous printing. Declared yield values in accordance with QualityLogic Color Photo Yield Test Methodology

Cartridge Identifier	Color	Average (pages)	Standard Deviation (pages)	90% Lower Confidence (pages)	Number used in calculations/test	Primary/ Supplemental
10C	Color	176	5	173	9/9	Primary
10B	K (Black)	1,310	21	1,275	3/3	Supplemental

Printer Identifier	Kodak ESP 7250
Printer Manufacturer	Kodak
Cartridge Identifier	Black Ink Cartridge 10B & Color Ink Cartridge 10C
Cartridge Type	Separate ink supply and print head
Date Tested	4/1/10 - 4/13/10
EOL Criteria	This printer has Ink Out which stops printing. Whichever came first, either Ink Out or Fade, was used as the EOL criteria.
Print mode used	Continuous
Paper Size	Letter
Media used	Xerox Business 4200, 92 Brightness 20lb. weight
Driver version	Driver Version = 5.1.6.0 The following driver settings were changed from default: Color Ink Test: Paper type = Changed to Plain Paper from Auto Select Mono Ink Test: Paper type = Changed to Plain Paper from Auto Select Color Printing = Changed to Black and White from Color

Declaration of Yield

Inkjet Cartridge Yield when tested in Kodak ESP 7250:

Using the test suite defined in ISO/IEC 24712 provides the following results:

Average K (Black) Cartridge Yield – Up to 284 standard pages

Average Color Cartridge Yield – Up to 426 standard pages

Using the test page defined in ISO/IEC 19752 provides the following results:

Average K (Black) Cartridge Yield – Up to 444 standard pages

Estimated supplemental Color Cartridge Yield – Up to 3,546 standard pages

Values obtained by continuous printing. Declared yield values in accordance with ISO/IEC 24711

Using 24712 Test Suite						
Cartridge Identifier	Color	Average (pages)	Standard Deviation (pages)	90% Lower Confidence (pages)	Number used in calculations/test	Primary/ Supplemental
10B	K (Black)	285	1	284	12/18	Primary
10C	Color	428	3	426	9/12	Primary

Using 19752 Test Page						
Cartridge Identifier	Color	Average (pages)	Standard Deviation (pages)	90% Lower Confidence (pages)	Number used in calculations/test	Primary/ Supplemental
10B	K (Black)	445	2	444	24/24	Primary
10C	Color	3,556	6	3,546	3/3	Supplemental

Printer Identifier	Kodak ESP 7250
Printer Manufacturer	Kodak
Cartridge Identifier	Black Ink Cartridge 10B & Color Ink Cartridge 10C
Cartridge Type	Separate ink supply and print head
Date Tested	4/5/10 – 4/6/10
EOL Criteria	This printer has Ink Out which stops printing. Whichever came first, either Ink Out or Fade, was used as the EOL criteria.
Print mode used	Continuous
Paper Size	4" x 6" borderless photo on 8 ½" x 11" photo paper
Media used	Kodak Ultra Premium Photo Paper, High Gloss
Driver version	Driver Version = 5.1.6.0 The following driver settings were changed from default: Paper type = Changed to KODAK ULTRA Premium Photo – High Gloss from Auto Select

Declaration of Yield

Inkjet Cartridge Yield when tested in Kodak ESP 7250:

Using the QualityLogic Color Photo test suite provides the following results:

Average Color Cartridge Yield – Up to 179 standard pages

Estimated supplemental K (Black) Cartridge Yield – Up to 1,205 standard pages

Values obtained by continuous printing. Declared yield values in accordance with QualityLogic Color Photo Yield Test Methodology

Cartridge Identifier	Color	Average (pages)	Standard Deviation (pages)	90% Lower Confidence (pages)	Number used in calculations/test	Primary/ Supplemental
10C	Color	180	1	179	9/9	Primary
10B	K (Black)	1,256	31	1,205	3/3	Supplemental

Printer Identifier	Kodak ESP 9250
Printer Manufacturer	Kodak
Cartridge Identifier	Black Ink Cartridge 10B & Color Ink Cartridge 10C
Cartridge Type	Separate ink supply and print head
Date Tested	11/17/10 - 11/22/10; 2/17/11 - 2/18/11
EOL Criteria	This printer has Ink Out which stops printing. Whichever came first, either Ink Out or Fade, was used as the EOL criteria.
Print mode used	Continuous
Paper Size	Letter
Media used	Xerox Business 4200, 92 Brightness 20lb. weight
Driver version	Driver version = 09/02/2010,5.4.6.3 The following driver settings were changed from default: Color Test: Paper type = Changed to Plain Paper from Auto Select. Mono Test: Paper type = Changed to Plain Paper from Auto Select. Color Printing = Changed to Black and White from Color.

Declaration of Yield

Inkjet Cartridge Yield when tested in Kodak ESP 9250:

Using the test suite defined in ISO/IEC 24712 provides the following results:

Average K (Black) Cartridge Yield – Up to 283 standard pages

Average Color Cartridge Yield – Up to 425 standard pages

Using the test page defined in ISO/IEC 19752 provides the following results:

Average K (Black) Cartridge Yield – Up to 439 standard pages

Estimated supplemental Color Cartridge Yield – Up to 2,338 standard pages

Values obtained by continuous printing. Declared yield values in accordance with ISO/IEC 24711

Using 24712 Test Suite						
Cartridge Identifier	Color	Average (pages)	Standard Deviation (pages)	90% Lower Confidence (pages)	Number used in calculations/test	Primary/ Supplemental
10B	K (Black)	284	2	283	12/15	Primary
10C	Color	427	3	425	9/9	Primary

Using 19752 Test Page						
Cartridge Identifier	Color	Average (pages)	Standard Deviation (pages)	90% Lower Confidence (pages)	Number used in calculations/test	Primary/ Supplemental
10B	K (Black)	440	2	439	15/18	Primary
10C	Color	2,450	66	2,338	3/3	Supplemental

Printer Identifier	Kodak ESP 9250
Printer Manufacturer	Kodak
Cartridge Identifier	Black Ink Cartridge 10B & Color Ink Cartridge 10C
Cartridge Type	Separate ink supply and print head
Date Tested	11/22/10 – 11/24/10
EOL Criteria	This printer has Ink Out which stops printing. Whichever came first, either Ink Out or Fade, was used as the EOL criteria.
Print mode used	Continuous
Paper Size	4" x 6" borderless photo on 8 ½" x 11" photo paper
Media used	Kodak Ultra Premium Photo Paper, High Gloss
Driver version	Driver version = 09/02/2010,5.4.6.3 The following driver settings were changed from default: Paper type = Changed to KODAK ULTRA Premium Photo – High Gloss from Auto Select

Declaration of Yield

Inkjet Cartridge Yield when tested in Kodak ESP 9250:

Using the QualityLogic Color Photo test suite provides the following results:

Average Color Cartridge Yield – Up to 176 standard pages

Estimated supplemental K (Black) Cartridge Yield – Up to 1,117 standard pages

Values obtained by continuous printing. Declared yield values in accordance with QualityLogic Color Photo Yield Test Methodology

Cartridge Identifier	Color	Average (pages)	Standard Deviation (pages)	90% Lower Confidence (pages)	Number used in calculations/test	Primary/ Supplemental
10C	Color	177	2	176	9/12	Primary
10B	K (Black)	1,152	21	1,117	3/6	Supplemental

Printer Identifier	Kodak ESP C310
Printer Manufacturer	Kodak
Cartridge Identifier	30 Black, 30 Color
Cartridge Type	Separate ink supply and print head
Date Tested	3/29/11 – 4/1/11
EOL Criteria	This printer has Ink Out which stops printing. Whichever came first, either Ink Out or Fade, was used as the EOL criteria.
Print mode used	Continuous
Paper Size	Letter
Media used	Xerox Business 4200, 92 Brightness 20lb. weight
Driver version	Driver Version = 03/01/2011,6.2.5.20 The following driver settings were changed from default: Color Test: Paper type = Changed to Plain Paper from Auto Select. Mono Test: Paper type = Changed to Plain Paper from Auto Select. Color printing = Changed to Black and White from Color.

Declaration of Yield

Inkjet Cartridge Yield when tested in Kodak ESP C310:

Using the test suite defined in ISO/IEC 24712 provides the following results:

Average K (Black) Cartridge Yield – Up to 222 standard pages

Average Color Cartridge Yield – Up to 292 standard pages

Using the test page defined in ISO/IEC 19752 provides the following results:

Average K (Black) Cartridge Yield – Up to 344 standard pages

Estimated supplemental Color Cartridge Yield – Up to 1,725 standard pages

Values obtained by continuous printing. Declared yield values in accordance with ISO/IEC 24711

Using 24712 Test Suite						
Cartridge Identifier	Color	Average (pages)	Standard Deviation (pages)	90% Lower Confidence (pages)	Number used in calculations/test	Primary/ Supplemental
Kodak Black 30	K (Black)	227	8	222	9/15	Primary
Kodak Color 30	Color	293	3	292	9/12	Primary

Using 19752 Test Page						
Cartridge Identifier	Color	Average (pages)	Standard Deviation (pages)	90% Lower Confidence (pages)	Number used in calculations/test	Primary/ Supplemental
Kodak Black 30	K (Black)	353	19	344	16/19	Primary
Kodak Color 30	Color	2,119	233	1,725	3/3	Supplemental

Printer Identifier	Kodak ESP C310
Printer Manufacturer	Kodak
Cartridge Identifier	30 Black, 30 Color
Cartridge Type	Separate ink supply and print head
Date Tested	4/4/11 – 4/4/11
EOL Criteria	This printer has Ink Out which stops printing. Whichever came first, either Ink Out or Fade, was used as the EOL criteria.
Print mode used	Continuous
Paper Size	4" x 6" borderless photo on 8 ½" x 11" photo paper
Media used	Kodak Ultra Premium Photo Paper, High Gloss
Driver version	Driver Version = 03/01/2011,6.2.5.20 The following driver settings were changed from default: Paper type = Changed to KODAK ULTRA Premium Photo- High Gloss from Auto Select

Declaration of Yield

Inkjet Cartridge Yield when tested in Kodak ESP C310:

Using the QualityLogic Color Photo test suite provides the following results:

Average Color Cartridge Yield – Up to 104 standard pages

Estimated Supplemental K (Black) Cartridge Yield – Up to 795 standard pages

Values obtained by continuous printing. Declared yield values in accordance with QualityLogic Color Photo Yield Test Methodology

Cartridge Identifier	Color	Average (pages)	Standard Deviation (pages)	90% Lower Confidence (pages)	Number used in calculations/test	Primary/ Supplemental
Kodak Color 30	Color	104	-	104	9/9	Primary
Kodak Black 30	K (Black)	842	27	795	3/3	Supplemental

Printer Identifier	Kodak ESP C315
Printer Manufacturer	Kodak
Cartridge Identifier	30 Black, 30 Color
Cartridge Type	Separate ink supply and print head
Date Tested	7/19/11 – 7/25/11
EOL Criteria	This printer has Ink Out which stops printing. Whichever came first, either Ink Out or Fade, was used as the EOL criteria.
Print mode used	Continuous
Paper Size	A4
Media used	Hammermill Fore Multi-Purpose, 96 Brightness 20lb. weight
Driver version	Driver version = 03/01/2011,6.2.5.20 The following driver settings were changed from default: Color Test: Paper type = Changed to Plain Paper from Auto Select. Paper size = Changed to A4 from Letter. Mono Test: Paper type = Changed to Plain Paper from Auto Select. Paper size = Changed to A4 from Letter. Color printing = Changed to Black and White from Color.

Declaration of Yield

Inkjet Cartridge Yield when tested in Kodak ESP C315:

Using the test suite defined in ISO/IEC 24712 provides the following results:

Average K (Black) Cartridge Yield – Up to 221 standard pages

Average Color Cartridge Yield – Up to 290 standard pages

Using the test page defined in ISO/IEC 19752 provides the following results:

Average K (Black) Cartridge Yield – Up to 358 standard pages

Estimated supplemental Color Cartridge Yield – Up to 2,243 standard pages

Values obtained by continuous printing. Declared yield values in accordance with ISO/IEC 24711

Using 24712 Test Suite

Cartridge Identifier	Color	Average (pages)	Standard Deviation (pages)	90% Lower Confidence (pages)	Number used in calculations/test	Primary/ Supplemental
Kodak Black 30	K (Black)	227	9	221	9/15	Primary
Kodak Color 30	Color	292	3	290	9/12	Primary

Using 19752 Test Page

Cartridge Identifier	Color	Average (pages)	Standard Deviation (pages)	90% Lower Confidence (pages)	Number used in calculations/test	Primary/ Supplemental
Kodak Black 30	K (Black)	359	3	358	18/21	Primary
Kodak Color 30	Color	2,276	20	2,243	3/3	Supplemental

Printer Identifier	Kodak ESP Office 2170
Printer Manufacturer	Kodak
Cartridge Identifier	Black 30, Color 30
Cartridge Type	Separate ink supply and print head
Date Tested	8/3/11 – 8/8/11
EOL Criteria	This printer has Ink Out which stops printing. Whichever came first, either Ink Out or Fade, was used as the EOL criteria.
Print mode used	Continuous
Paper Size	Letter
Media used	Xerox Business 4200, 92 Brightness 20lb. weight
Driver version	Driver version = 03/01/2011,6.2.5.20 The following driver settings were changed from default: Color Test: Paper type = Changed to Plain Paper from Auto Select. Mono Test: Paper type = Changed to Plain Paper from Auto Select. Color Printing = Changed to Black and White from Color.

Declaration of Yield

Inkjet Cartridge Yield when tested in Kodak ESP Office 2170:

Using the test suite defined in ISO/IEC 24712 provides the following results:

Average K (Black) Cartridge Yield – Up to 221 standard pages

Average Color Cartridge Yield – Up to 290 standard pages

Using the test page defined in ISO/IEC 19752 provides the following results:

Average K (Black) Cartridge Yield – Up to 356 standard pages

Estimated supplemental Color Cartridge Yield – Up to 2,150 standard pages

Values obtained by continuous printing. Declared yield values in accordance with ISO/IEC 24711

Using 24712 Test Suite						
Cartridge Identifier	Color	Average (pages)	Standard Deviation (pages)	90% Lower Confidence (pages)	Number used in calculations/test	Primary/ Supplemental
Kodak Black 30	K (Black)	227	9	221	9/15	Primary
Kodak Color 30	Color	292	3	290	9/12	Primary

Using 19752 Test Page						
Cartridge Identifier	Color	Average (pages)	Standard Deviation (pages)	90% Lower Confidence (pages)	Number used in calculations/test	Primary/ Supplemental
Kodak Black 30	K (Black)	358	5	356	18/18	Primary
Kodak Color 30	Color	2,150	-	2,150	3/3	Supplemental

Printer Identifier	Kodak ESP Office 2170
Printer Manufacturer	Kodak
Cartridge Identifier	Black 30, Color 30
Cartridge Type	Separate ink supply and print head
Date Tested	8/8/11 – 8/9/11
EOL Criteria	This printer has Ink Out which stops printing. Whichever came first, either Ink Out or Fade, was used as the EOL criteria.
Print mode used	Continuous
Paper Size	4" x 6" borderless photo on 8 ½" x 11" photo paper
Media used	Kodak Ultra Premium Photo Paper, High Gloss
Driver version	Driver version = 03/01/2011,6.2.5.20 The following driver settings were changed from default: Paper type = Changed to KODAK ULTRA Premium Photo - High Gloss from Auto Select.

Declaration of Yield

Inkjet Cartridge Yield when tested in Kodak ESP Office 2170:

Using the QualityLogic Color Photo test suite provides the following results:

Average Color Cartridge Yield – Up to 104 standard pages

Estimated supplemental K (Black) Cartridge Yield – Up to 743 standard pages

Values obtained by continuous printing. Declared yield values in accordance with QualityLogic Color Photo Yield Test Methodology

Cartridge Identifier	Color	Average (pages)	Standard Deviation (pages)	90% Lower Confidence (pages)	Number used in calculations/test	Primary/ Supplemental
Kodak Color 30	Color	105	2	104	9/9	Primary
Kodak Black 30	K (Black)	926	109	743	3/3	Supplemental

Printer Identifier	Brother DCP-195C
Printer Manufacturer	Brother
Cartridge Identifier	LC980BK, LC980C, LC980M, LC980Y
Cartridge Type	Separate ink supply and print head
Date Tested	5/19/11 – 5/26/11
EOL Criteria	This printer has Ink Out which stops printing. Whichever came first, either Ink Out or Fade, was used as the EOL criteria.
Print mode used	Continuous
Paper Size	A4
Media used	Hammermill Fore Multi-Purpose, 96 Brightness 20lb. weight
Driver version	Driver Version= Brother DCP-195C Printer Version5.00/Version 5.1 (Build 2600 Service Pack 3) Paper Size = Changed to A4 from Letter.

Declaration of Yield

Inkjet Cartridge Yield when tested in Brother DCP-195C:

Using the test suite defined in ISO/IEC 24712 provides the following results:

- Average K (Black) Cartridge Yield – Up to 336 standard pages
- Average Cyan Cartridge Yield – Up to 388 standard pages
- Average Magenta Cartridge Yield – Up to 346 standard pages
- Average Yellow Cartridge Yield – Up to 282 standard pages

Using the test page defined in ISO/IEC 19752 provides the following results:

- Average K (Black) Cartridge Yield – Up to 362 standard pages
- Estimated supplemental Cyan Cartridge Yield – Up to 7,830 standard pages
- Estimated supplemental Magenta Cartridge Yield – Up to 13,987 standard pages
- Estimated supplemental Yellow Cartridge Yield – Up to 9,822 standard pages

Values obtained by continuous printing. Declared yield values in accordance with ISO/IEC 24711

Using 24712 Test Suite						
Cartridge Identifier	Color	Average (pages)	Standard Deviation (pages)	90% Lower Confidence (pages)	Number used in calculations/test	Primary/ Supplemental
LC980BK	K (Black)	346	16	336	9/15	Primary
LC980C	Cyan	404	26	388	9/12	Primary
LC980M	Magenta	355	15	346	9/15	Primary
LC980Y	Yellow	290	17	282	12/18	Primary

Using 19752 Test Page						
Cartridge Identifier	Color	Average (pages)	Standard Deviation (pages)	90% Lower Confidence (pages)	Number used in calculations/test	Primary/ Supplemental
LC980BK	K (Black)	373	17	362	9/9	Primary
LC980C	Cyan	9,091	748	7,830	3/3	Supplemental
LC980M	Magenta	16,075	1,238	13,987	3/3	Supplemental
LC980Y	Yellow	11,254	850	9,822	3/3	Supplemental

Printer Identifier	Brother DCP-195C
Printer Manufacturer	Brother
Cartridge Identifier	LC980BK, LC980C, LC980M, LC980Y
Cartridge Type	Separate ink supply and print head
Date Tested	5/26/11 – 6/13/11
EOL Criteria	This printer has Ink Out which stops printing. Whichever came first, either Ink Out or Fade, was used as the EOL criteria.
Print mode used	Continuous
Paper Size	4" x 6" borderless photo on 210 x 297mm photo paper
Media used	Brother Premium Plus Glossy Photo Paper (BP71GA4)
Driver version	Driver Version= Brother DCP-195C Printer Version5.00/Version 5.1 (Build 2600 Service Pack 3) Media Type = Changed to Brother BP71 Photo Paper from Plain Paper. Quality = Changed to Photo from Normal. Paper Size = Changed to A4 from Letter.

Declaration of Yield

Inkjet Cartridge Yield when tested in Brother DCP-195C:

Using the QualityLogic Color Photo test suite provides the following results:

- Average Cyan Cartridge Yield – Up to 83 standard pages
- Average Magenta Cartridge Yield – Up to 118 standard pages
- Average Yellow Cartridge Yield – Up to 85 standard pages
- Estimated supplemental K (Black) Cartridge Yield – Up to 5,636 standard pages

Values obtained by continuous printing. Declared yield values in accordance with QualityLogic Color Photo Yield Test Methodology

Cartridge Identifier	Color	Average (pages)	Standard Deviation (pages)	90% Lower Confidence (pages)	Number used in calculations/test	Primary/ Supplemental
LC980C	Cyan	86	7	83	12/15	Primary
LC980M	Magenta	122	6	118	9/9	Primary
LC980Y	Yellow	88	6	85	12/15	Primary
LC980BK	K (Black)	14,201	5,081	5,636	3/3	Supplemental

Printer Identifier	Brother MFC-5490cn
Printer Manufacturer	Brother
Cartridge Identifier	LC1100BK, LC1100C, LC1100M, LC1100Y
Cartridge Type	Separate ink supply and print head
Date Tested	4/29/09 – 5/7/09
EOL Criteria	This printer has Ink Out which stops printing. Whichever came first, either Ink Out or Fade, was used as the EOL criteria.
Print mode used	Continuous
Paper Size	A4
Media used	Hammermill Fore Multi-Purpose, 96 Brightness 20lb. weight
Driver version	Driver Version= Brother MFC-5490CN Printer Version 5.02/Version 5.1 (Build 2600 Service pack 3) Paper Size = Changed to A4 from Letter

Declaration of Yield

Inkjet Cartridge Yield when tested in Brother MFC-5490cn:

Using the test suite defined in ISO/IEC 24712 provides the following results:

Average K (Black) Cartridge Yield – Up to 531 standard pages

Average Cyan Cartridge Yield – Up to 433 standard pages

Average Magenta Cartridge Yield – Up to 360 standard pages

Average Yellow Cartridge Yield – Up to 314 standard pages

Using the test page defined in ISO/IEC 19752 provides the following results:

Average K (Black) Cartridge Yield – Up to 535 standard pages

Estimated supplemental Cyan Cartridge Yield – Up to 8,059 standard pages

Estimated supplemental Magenta Cartridge Yield – Up to 11,730 standard pages

Estimated supplemental Yellow Cartridge Yield – Up to 8,867 standard pages

Values obtained by continuous printing. Declared yield value in accordance with ISO/IEC 24711.

Using 24712 Test Suite						
Cartridge Identifier	Color	Average (pages)	Standard Deviation (pages)	90% Lower Confidence (pages)	Number used in calculations/test	Primary/ Supplemental
LC1100BK	K (Black)	543	20	531	9/12	Primary
LC1100C	Cyan	449	25	433	9/15	Primary
LC1100M	Magenta	375	27	360	12/18	Primary
LC1100Y	Yellow	321	14	314	14/20	Primary

Using 19752 Test Page						
Cartridge Identifier	Color	Average (pages)	Standard Deviation (pages)	90% Lower Confidence (pages)	Number used in calculations/test	Primary/ Supplemental
LC1100BK	K (Black)	559	40	535	9/9	Primary
LC1100C	Cyan	9,355	769	8,059	3/3	Supplemental
LC1100M	Magenta	13,700	1,169	11,730	3/3	Supplemental
LC1100Y	Yellow	11,351	1,473	8,867	3/3	Supplemental

Printer Identifier	Brother MFC-5490cn
Printer Manufacturer	Brother
Cartridge Identifier	LC1100BK, LC1100C, LC1100M, LC1100Y
Cartridge Type	Separate ink supply and print head
Date Tested	5/7/09 – 5/12/09
EOL Criteria	This printer has Ink Out which stops printing. Whichever came first, either Ink Out or Fade, was used as the EOL criteria.
Print mode used	Continuous
Paper Size	4" x 6" borderless photo on 210 x 297 mm photo paper
Media used	Brother Premium Glossy Photo Paper (BP61GLA)
Driver version	Driver Version = Brother MFC-5490CN Printer Version 5.02/Version 5.1 (Build 2600 Service pack 3) The following driver settings were changed from default: Media Type = Changed to Brother BP61 Photo Paper from Plain Paper Paper Size = Changed to A4 from Letter

Declaration of Yield

Inkjet Cartridge Yield when tested in Brother MFC-5490cn:

Using the QualityLogic Color Photo test suite provides the following results:

- Average Cyan Cartridge Yield – Up to 87 standard pages
- Average Magenta Cartridge Yield – Up to 101 standard pages
- Average Yellow Cartridge Yield – Up to 88 standard pages
- Estimated supplemental K (Black) Cartridge Yield – Up to 8,649 standard pages

Values obtained by continuous printing. Declared yield value in accordance with QualityLogic Color Photo Cartridge Yield Test Methodology.

Cartridge Identifier	Color	Average (pages)	Standard Deviation (pages)	90% Lower Confidence (pages)	Number used in calculations/test	Primary/ Supplemental
LC1100C	Cyan	90	5	87	9/12	Primary
LC1100M	Magenta	105	6	101	9/9	Primary
LC1100Y	Yellow	93	8	88	9/12	Primary
LC1100BK	K (Black)	11,572	1,734	8,649	3/3	Supplemental

Printer Identifier	Canon Pixma MG6150
Printer Manufacturer	Canon
Cartridge Identifier	PGI-525PGBK, CLI-526C, CLI-526M, CLI-526Y, CLI-526BK, CLI-526GY
Cartridge Type	Separate ink supply and print head
Date Tested	5/9/11 – 5/13/11
EOL Criteria	This printer has Ink Out which stops printing. Whichever came first, either Ink Out or Fade, was used as the EOL criteria.
Print mode used	Continuous
Paper Size	A4
Media used	Hammermill Fore Multi-Purpose, 96 Brightness 20lb. weight
Driver version	Driver Version = Canon Inkjet Printer Driver Version 2.41 The following driver settings were changed from default: Page Size = Changed to A4 from Letter 8.5"x11"

Declaration of Yield

Inkjet Cartridge Yield when tested in Canon Pixma MG6150:

Using the test suite defined in ISO/IEC 24712 provides the following results:

- Average K (Black) Cartridge Yield – Up to 341 standard pages
- Average Cyan Cartridge Yield – Up to 562 standard pages
- Average Magenta Cartridge Yield – Up to 519 standard pages
- Average Yellow Cartridge Yield – Up to 536 standard pages
- Estimated supplemental K (Photo Black) Cartridge Yield – Up to 6,014 standard pages
- Estimated supplemental Gray Cartridge Yield – Up to 3,659 standard pages

Using the test page defined in ISO/IEC 19752 provides the following results:

- Average K (Black) Cartridge Yield – Up to 357 standard pages
- Estimated supplemental Cyan Cartridge Yield – Up to 2,688 standard pages
- Estimated supplemental Magenta Cartridge Yield – Up to 3,007 standard pages
- Estimated supplemental Yellow Cartridge Yield – Up to 3,911 standard pages
- Estimated supplemental K (Photo Black) Cartridge Yield – Up to 5,785 standard pages
- Estimated supplemental Gray Cartridge Yield – Up to 3,710 standard pages

Values obtained by continuous printing. Declared yield values in accordance with ISO/IEC 24711

Using 24712 Test Suite						
Cartridge Identifier	Color	Average (pages)	Standard Deviation (pages)	90% Lower Confidence (pages)	Number used in calculations/test	Primary/ Supplemental
PGI-525PGBK	K (Black)	346	10	341	13/19	Primary
CLI-526C	Cyan	575	20	562	9/12	Primary
CLI-526M	Magenta	534	24	519	9/15	Primary
CLI-526Y	Yellow	550	23	536	9/15	Primary
CLI-526BK	K (Photo Black)	6,400	229	6,014	3/6	Supplemental
CLI-526GY	Gray	3,782	73	3,659	3/6	Supplemental

Using 19752 Test Page						
Cartridge Identifier	Color	Average (pages)	Standard Deviation (pages)	90% Lower Confidence (pages)	Number used in calculations/test	Primary/ Supplemental
PGI-525PGBK	K (Black)	364	12	357	9/9	Primary
CLI-526C	Cyan	3,076	230	2,688	3/3	Supplemental
CLI-526M	Magenta	3,346	201	3,007	3/3	Supplemental
CLI-526Y	Yellow	4,423	304	3,911	3/3	Supplemental
CLI-526BK	K (Photo Black)	7,104	782	5,785	3/3	Supplemental
CLI-526GY	Gray	4,326	365	3,710	3/3	Supplemental

Test results and cost information provided by QualityLogic. Tests were performed under laboratory conditions and end-user's results may vary. Test results, ink cartridge pricing and cost per page pricing subject to change without notice by QualityLogic. All test results and cost information are provided "as-is," "as available," and all warranties, expressed or implied, are hereby disclaimed. Users of the information contained herein assume full responsibility and risk of loss resulting from usage thereof.

Printer Identifier	Canon Pixma MG6150
Printer Manufacturer	Canon
Cartridge Identifier	PGI-525PGBK, CLI-526C, CLI-526M, CLI-526Y, CLI-526BK, CLI-526GY
Cartridge Type	Separate ink supply and print head
Date Tested	5/25/11 – 5/27/11
EOL Criteria	This printer has Ink Out which stops printing. Whichever came first, either Ink Out or Fade, was used as the EOL criteria.
Print mode used	Continuous
Paper Size	4" x 6" borderless photo on 210 x 297mm photo paper
Media used	Canon Photo Paper Plus Glossy II, High Gloss (PP-201)
Driver version	Driver Version = Canon Inkjet Printer Driver Version 2.41 The following driver settings were changed from default: Media Type = Changed to Photo Paper Plus Glossy II from Plain Paper. Print Quality = Changed to High from Standard. Paper Source = Changed to Rear Tray from Automatically Select. Page Size = Changed to A4 from Letter 8.5"x11"

Declaration of Yield

Inkjet Cartridge Yield when tested in Canon Pixma MG6150:

Using the QualityLogic Color Photo test suite provides the following results:

- Average Cyan Cartridge Yield – Up to 286 standard pages
- Average Magenta Cartridge Yield – Up to 328 standard pages
- Average Yellow Cartridge Yield – Up to 324 standard pages
- Average Gray Cartridge Yield – Up to 177 standard pages
- Estimated supplemental K (Photo Black) Cartridge Yield – Up to 673 standard pages
- Estimated supplemental K (Black) Cartridge Yield – Up to 1,731 standard pages

Values obtained by continuous printing. Declared yield values in accordance with QualityLogic Color Photo Yield Test Methodology

Cartridge Identifier	Color	Average (pages)	Standard Deviation (pages)	90% Lower Confidence (pages)	Number used in calculations/test	Primary/ Supplemental
CLI-526C	Cyan	295	15	286	9/12	Primary
CLI-526M	Magenta	339	17	328	9/10	Primary
CLI-526Y	Yellow	331	10	324	9/11	Primary
CLI-526GY	Gray	180	7	177	15/18	Primary
CLI-526BK	K (Photo Black)	701	17	673	3/6	Supplemental
PGI-525PGBK	K (Black)	1,841	65	1,731	3/3	Supplemental

Printer Identifier	Canon PIXMA MP260
Printer Manufacturer	Canon
Cartridge Identifier	PG-510, CL-511
Cartridge Type	Integral ink supply and print head
Date Tested	10/30/09 – 11/5/09
EOL Criteria	Fade
Print mode used	Continuous
Paper Size	A4
Media used	Hammermill Fore Multi-Purpose, 96 Brightness 20lb. weight
Driver version	Driver Version = 2.20 The following driver settings were changed from default: Page Size = Changed to A4 from Letter

Declaration of Yield

Inkjet Cartridge Yield when tested in Canon PIXMA MP260:

Using the test suite defined in ISO/IEC 24712 provides the following results:

Average K (Black) Cartridge Yield: Up to 260 standard pages

Average Tri-color Cartridge Yield: Up to 256 standard pages

Using the test page defined in ISO/IEC 19752 provides the following results:

Average K (Black) Cartridge Yield: Up to 257 standard pages

Estimated supplemental Tri-color Cartridge Yield: Up to 2,969 standard pages

Values obtained by continuous printing. Declared yield value in accordance with ISO/IEC 24711.

Using 24712 Test Suite

Cartridge Identifier	Color	Average (pages)	Standard Deviation (pages)	90% Lower Confidence (pages)	Number used in calculations/test	Primary/ Supplemental
PG-510	K (Black)	267	11	260	9/12	Primary
CL-511	Tri-color	258	3	256	9/15	Primary

Using 19752 Test Page

Cartridge Identifier	Color	Average (pages)	Standard Deviation (pages)	90% Lower Confidence (pages)	Number used in calculations/test	Primary/ Supplemental
PG-510	K (Black)	262	8	257	9/9	Primary
CL-511	Tri-color	3,002	19	2,969	3/3	Supplemental

Printer Identifier	Canon PIXMA MP260
Printer Manufacturer	Canon
Cartridge Identifier	PG-510, CL-511
Cartridge Type	Integral ink supply and print head
Date Tested	11/17/09 – 11/18/09
EOL Criteria	Fade
Print mode used	Continuous
Paper Size	4" x 6" borderless photo on 210 x 297mm photo paper
Media used	Canon Photo Paper Plus Glossy II, High Gloss (PP-201)
Driver version	Driver Version = 2.20 The following driver settings were changed from default: Media Type = Changed to Photo Paper Plus Glossy II from Plain Paper Print Quality = Changed to High from Standard Page Size = Changed to A4 from Letter

Declaration of Yield

Inkjet Cartridge Yield when tested in Canon PIXMA MP260:

Using the QualityLogic Color Photo test suite provides the following results:

Average Tri-color Cartridge Yield: Up to 90 standard pages

Estimated supplemental K (Black) Cartridge Yield: Up to 1,355 standard pages

Values obtained by continuous printing. Declared yield value in accordance with QualityLogic Color Photo Cartridge Yield Test Methodology.

Cartridge Identifier	Color	Average (pages)	Standard Deviation (pages)	90% Lower Confidence (pages)	Number used in calculations/test	Primary/ Supplemental
CL-511	Tri-color	91	2	90	9/9	Primary
PG-510	K (Black)	1,390	21	1,355	3/3	Supplemental

Printer Identifier	Canon PIXMA MP620
Printer Manufacturer	Canon
Cartridge Identifier	PGI-520BK, CLI-521C, CLI-521M, CLI-521Y, CLI-521BK
Cartridge Type	Separate ink supply and print head
Date Tested	3/6/09 – 3/13/09
EOL Criteria	This printer has Ink Out which stops printing. Whichever came first, either Ink Out or Fade, was used as the EOL criteria.
Print mode used	Continuous
Paper Size	A4
Media used	Hammermill Fore Multi-Purpose, 96 Brightness 20lb. weight
Driver version	Driver Version = 10/21/2008, 2.22.2.20 The following driver settings were changed from default: Color Ink Test: Paper Size = Changed to A4 from Letter Mono Ink Test: Paper Size = Changed to A4 from Letter

Declaration of Yield

Inkjet Cartridge Yield when tested in Canon PIXMA MP620:

Using the test suite defined in ISO/IEC 24712 provides the following results:

- Average K (Pigment Black) Cartridge Yield – Up to 325 standard pages
- Average Cyan Cartridge Yield – Up to 542 standard pages
- Average Magenta Cartridge Yield – Up to 518 standard pages
- Average Yellow Cartridge Yield – Up to 527 standard pages
- Estimated supplemental K (Black) Cartridge Yield – Up to 3,737 standard pages

Using the test page defined in ISO/IEC 19752 provides the following results:

- Average K (Pigment Black) Cartridge Yield – Up to 359 standard pages
- Estimated supplemental Cyan Cartridge Yield – Up to 3,095 standard pages
- Estimated supplemental Magenta Cartridge Yield – Up to 3,463 standard pages
- Estimated supplemental Yellow Cartridge Yield – Up to 4,514 standard pages
- Estimated supplemental K (Black) Cartridge Yield – Up to 6,882 standard pages

Values obtained by continuous printing. Declared yield values in accordance with ISO/IEC 24711

Using 24712 Test Suite						
Cartridge Identifier	Color	Average (pages)	Standard Deviation (pages)	90% Lower Confidence (pages)	Number used in calculations/test	Primary/ Supplemental
PGI-520BK	K (Pigment Black)	334	20	325	14/19	Primary
CLI-521C	Cyan	563	33	542	9/12	Primary
CLI-521M	Magenta	538	32	518	9/15	Primary
CLI-521Y	Yellow	543	26	527	9/15	Primary
CLI-521BK	K (Black)	4,589	505	3,737	3/6	Supplemental

Using 19752 Test Page						
Cartridge Identifier	Color	Average (pages)	Standard Deviation (pages)	90% Lower Confidence (pages)	Number used in calculations/test	Primary/ Supplemental
PGI-520BK	K (Pigment Black)	366	12	359	9/9	Primary
CLI-521C	Cyan	3,215	72	3,095	3/3	Supplemental
CLI-521M	Magenta	3,601	82	3,463	3/3	Supplemental
CLI-521Y	Yellow	4,653	83	4,514	3/3	Supplemental
CLI-521BK	K (Black)	7,079	117	6,882	3/3	Supplemental

47

Test results and cost information provided by QualityLogic. Tests were performed under laboratory conditions and end-user's results may vary. Test results, ink cartridge pricing and cost per page pricing subject to change without notice by QualityLogic. All test results and cost information are provided "as-is," "as available," and all warranties, expressed or implied, are hereby disclaimed. Users of the information contained herein assume full responsibility and risk of loss resulting from usage thereof.

Printer Identifier	Canon PIXMA MP620
Printer Manufacturer	Canon
Cartridge Identifier	PGI-520BK, CLI-521C, CLI-521M, CLI-521Y, CLI-521BK
Cartridge Type	Separate ink supply and print head
Date Tested	3/16/09 – 3/18/09
EOL Criteria	This printer has Ink Out which stops printing. Whichever came first, either Ink Out or Fade, was used as the EOL criteria.
Print mode used	Continuous
Paper Size	4" x 6" borderless photo on 210 x 297mm photo paper
Media used	Canon Photo Paper Plus Glossy II (PP-201)
Driver version	Driver Version = 10/21/2008, 2.22.2.20 The following driver settings were changed from default: Media Type = Changed to Photo Paper Plus Glossy II from Plain Paper Paper Source = Changed to Rear Tray from Automatically Select Print Quality = Changed to High from Standard Paper Size = Changed to A4 from Letter

Declaration of Yield

Inkjet Cartridge Yield when tested in Canon PIXMA MP620:

Using the QualityLogic Color Photo test suite provides the following results:

Average Cyan Cartridge Yield – Up to 197 standard pages

Average Magenta Cartridge Yield – Up to 219 standard pages

Average Yellow Cartridge Yield – Up to 212 standard pages

Estimated supplemental K (Black) Cartridge Yield Cartridge Yield – Up to 1,772 standard pages

Estimated supplemental K (Pigment Black) Cartridge Yield – Up to 571 standard pages

Values obtained by continuous printing. Declared yield values in accordance with QualityLogic Color Photo Yield Test Methodology

Cartridge Identifier	Color	Average (pages)	Standard Deviation (pages)	90% Lower Confidence (pages)	Number used in calculations/test	Primary/ Supplemental
CLI-521C	Cyan	203	9	197	9/12	Primary
CLI-521M	Magenta	224	9	219	9/9	Primary
CLI-521Y	Yellow	218	9	212	9/12	Primary
CLI-521BK	K (Black)	1,873	60	1,772	3/3	Supplemental
PGI-520BK	K (Pigment Black)	636	38	571	3/6	Supplemental

Printer Identifier	Epson Stylus Photo PX650
Printer Manufacturer	Epson
Cartridge Identifier	T0801, T0802, T0803, T0804, T0805, T0806
Cartridge Type	Separate ink supply and print head
Date Tested	4/6/2010 - 4/21/2010
EOL Criteria	This printer has Ink Out which stops printing. Whichever came first, either Ink Out or Fade, was used as the EOL criteria.
Print mode used	Continuous
Paper Size	Letter
Media used	Xerox Business 4200, 92 Brightness 20lb. weight
Driver version	Driver Version = Epson Color Printing System Version 6.61 The following driver settings were changed from default: Size = Changed to A4 210 x 297 mm from Letter 8 1/2 x 11 in

Declaration of Yield

Inkjet Cartridge Yield when tested in Epson Stylus Photo PX650:

Using the test suite defined in ISO/IEC 24712 provides the following results:

- Average K (Black) Cartridge Yield – Up to 341 standard pages
- Average Cyan Cartridge Yield – Up to 1,022 standard pages
- Average Magenta Cartridge Yield – Up to 481 standard pages
- Average Yellow Cartridge Yield – Up to 564 standard pages
- Average Light Cyan Cartridge Yield – Up to 377 standard pages
- Average Light Magenta Cartridge Yield – Up to 758 standard pages

Using the test page defined in ISO/IEC 19752 provides the following results:

- Average K (Black) Cartridge Yield – Up to 367 standard pages
- Estimated supplemental Cyan Cartridge Yield – Up to 3,391 standard pages
- Estimated supplemental Magenta Cartridge Yield – Up to 3,017 standard pages
- Estimated supplemental Yellow Cartridge Yield – Up to 4,384 standard pages
- Estimated supplemental Light Cyan Cartridge Yield – Up to 3,126 standard pages
- Estimated supplemental Light Magenta Cartridge Yield – Up to 3,707 standard pages

Values obtained by continuous printing. Declared yield values in accordance with ISO/IEC 24711

Using 24712 Test Suite						
Cartridge Identifier	Color	Average (pages)	Standard Deviation (pages)	90% Lower Confidence (pages)	Number used in calculations/test	Primary/ Supplemental
T0801	K (Black)	343	7	341	27/32	Primary
T0802	Cyan	1,041	30	1,022	9/12	Primary
T0803	Magenta	487	14	481	18/24	Primary
T0804	Yellow	576	28	564	15/21	Primary
T0805	Light Cyan	380	7	377	24/29	Primary
T0806	Light Magenta	765	12	758	11/17	Primary

Using 19752 Test Page						
Cartridge Identifier	Color	Average (pages)	Standard Deviation (pages)	90% Lower Confidence (pages)	Number used in calculations/test	Primary/ Supplemental
T0801	K (Black)	371	6	367	9/9	Primary
T0802	Cyan	3,474	49	3,391	3/3	Supplemental
T0803	Magenta	3,062	26	3,017	3/3	Supplemental
T0804	Yellow	4,834	267	4,384	3/3	Supplemental
T0805	Light Cyan	3,271	86	3,126	3/3	Supplemental
T0806	Light Magenta	3,917	125	3,707	3/3	Supplemental

Test results and cost information provided by QualityLogic. Tests were performed under laboratory conditions and end-user's results may vary. Test results, ink cartridge pricing and cost per page pricing subject to change without notice by QualityLogic. All test results and cost information are provided "as-is," "as available," and all warranties, expressed or implied, are hereby disclaimed. Users of the information contained herein assume full responsibility and risk of loss resulting from usage thereof.

Printer Identifier	Epson Stylus Photo PX650
Printer Manufacturer	Epson
Cartridge Identifier	T0801, T0802, T0803, T0804, T0805, T0806
Cartridge Type	Separate ink supply and print head
Date Tested	4/22/10 - 5/10/10
EOL Criteria	This printer has Ink Out which stops printing. Whichever came first, either Ink Out or Fade, was used as the EOL criteria.
Print mode used	Continuous
Paper Size	4" x 6" borderless photo on 210 x 297mm photo paper
Media used	Epson Premium Glossy Photo Paper (S04155)
Driver version	Driver Version = Epson Color Printing System Version 6.61 The following driver settings were changed from default: Quality Option = Changed to Best Photo from Text Type = Changed to Epson Premium Glossy from plain papers Size = Changed to A4 210 x x297 mm from Letter 8 ½ x 11 in

Declaration of Yield

Inkjet Cartridge Yield when tested in Epson Stylus Photo PX650:

Using the QualityLogic Color Photo test suite provides the following results:

- Average K (Black) Cartridge Yield – Up to 402 standard pages
- Average Cyan Cartridge Yield – Up to 402 standard pages
- Average Magenta Cartridge Yield – Up to 319 standard pages
- Average Yellow Cartridge Yield – Up to 205 standard pages
- Average Light Cyan Cartridge Yield – Up to 101 standard pages
- Average Light Magenta Cartridge Yield – Up to 115 standard pages

Values obtained by continuous printing. Declared yield values in accordance with QualityLogic Color Photo Yield Test Methodology

Cartridge Identifier	Color	Average (pages)	Standard Deviation (pages)	90% Lower Confidence (pages)	Number used in calculations/test	Primary/ Supplemental
T0801	K (Black)	410	12	402	9/9	Primary
T0802	Cyan	410	12	402	9/9	Primary
T0803	Magenta	327	12	319	9/12	Primary
T0804	Yellow	208	6	205	16/18	Primary
T0805	Light Cyan	102	3	101	35/36	Primary
T0806	Light Magenta	116	3	115	30/33	Primary

Printer Identifier	Epson Stylus SX115
Printer Manufacturer	Epson
Cartridge Identifier	T0891, T0892, T0893, T0894
Cartridge Type	Separate ink supply and print head
Date Tested	4/22/10 - 4/28/10
EOL Criteria	This printer has Ink Out which stops printing. Whichever came first, either Ink Out or Fade, was used as the EOL criteria.
Print mode used	Continuous
Paper Size	A4
Media used	Hammermill Fore Multi-Purpose, 96 Brightness 20lb. weight
Driver version	Driver Version = Epson Color Printing System Version 6.60 The following driver settings were changed from default: Size = Changed to A4 210 x 297 mm from Letter 8 ½ x 11 in

Declaration of Yield

Inkjet Cartridge Yield when tested in Epson Stylus SX115:

Using the test suite defined in ISO/IEC 24712 provides the following results:

- Average K (Black) Cartridge Yield – Up to 173 standard pages
- Average Cyan Cartridge Yield – Up to 259 standard pages
- Average Magenta Cartridge Yield – Up to 151 standard pages
- Average Yellow Cartridge Yield – Up to 250 standard pages

Using the test page defined in ISO/IEC 19752 provides the following results:

- Average K (Black) Cartridge Yield – Up to 201 standard pages
- Estimated supplemental Cyan Cartridge Yield – Up to 1,155 standard pages
- Estimated supplemental Magenta Cartridge Yield – Up to 1,553 standard pages
- Estimated supplemental Yellow Cartridge Yield – Up to 1,960 standard pages

Values obtained by continuous printing. Declared yield values in accordance with ISO/IEC 24711

Using 24712 Test Suite						
Cartridge Identifier	Color	Average (pages)	Standard Deviation (pages)	90% Lower Confidence (pages)	Number used in calculations/test	Primary/ Supplemental
T0891	K (Black)	180	14	173	12/18	Primary
T0892	Cyan	269	17	259	9/12	Primary
T0893	Magenta	155	7	151	15/21	Primary
T0894	Yellow	256	10	250	9/15	Primary

Using 19752 Test Page						
Cartridge Identifier	Color	Average (pages)	Standard Deviation (pages)	90% Lower Confidence (pages)	Number used in calculations/test	Primary/ Supplemental
T0891	K (Black)	207	9	201	9/9	Primary
T0892	Cyan	1,208	32	1,155	3/3	Supplemental
T0893	Magenta	1,622	41	1,553	3/3	Supplemental
T0894	Yellow	1,971	7	1,960	3/3	Supplemental

Printer Identifier	Epson Stylus SX115
Printer Manufacturer	Epson
Cartridge Identifier	T0891, T0892, T0893, T0894
Cartridge Type	Separate ink supply and print head
Date Tested	4/22/10 - 4/28/10
EOL Criteria	This printer has Ink Out which stops printing. Whichever came first, either Ink Out or Fade, was used as the EOL criteria.
Print mode used	Continuous
Paper Size	4" x 6" borderless photo on 210 x 297mm photo paper
Media used	Epson Premium Glossy Photo Paper (S04155)
Driver version	Driver Version = Epson Color Printing System Version 6.60 The following driver settings were changed from default: Quality Option = Changed to Best Photo from Text Type = Changed to Epson Premium Glossy from plain papers Size = Changed to A4 210 x x297 mm from Letter 8 ½ x 11 in

Declaration of Yield

Inkjet Cartridge Yield when tested in Epson Stylus SX115:

Using the QualityLogic Color Photo test suite provides the following results:

- Average Cyan Cartridge Yield – Up to 58 standard pages
- Average Magenta Cartridge Yield – Up to 58 standard pages
- Average Yellow Cartridge Yield – Up to 88 standard pages
- Estimated supplemental K (Black) Cartridge Yield – Up to 322 standard pages

Values obtained by continuous printing. Declared yield values in accordance with QualityLogic Color Photo Yield Test Methodology

Cartridge Identifier	Color	Average (pages)	Standard Deviation (pages)	90% Lower Confidence (pages)	Number used in calculations/test	Primary/ Supplemental
T0892	Cyan	60	3	58	12/16	Primary
T0893	Magenta	60	3	58	12/16	Primary
T0894	Yellow	90	4	88	9/10	Primary
T0891	K (Black)	357	21	322	3/4	Supplemental

Printer Identifier	Epson Stylus SX125
Printer Manufacturer	Epson
Cartridge Identifier	T1281, T1282, T1283, T1284
Cartridge Type	Separate ink supply and print head
Date Tested	5/20/11 – 5/26/11
EOL Criteria	This printer has Ink Out which stops printing. Whichever came first, either Ink Out or Fade, was used as the EOL criteria.
Print mode used	Continuous
Paper Size	A4
Media used	Hammermill Fore Multi-Purpose, 96 Brightness 20lb. weight
Driver version	Driver Version = Epson Color Printing System Version 6.72 The following driver settings were changed from default: Size = Changed to A4 210 x 297 mm from Letter 8 ½ x 11 in.

Declaration of Yield

Inkjet Cartridge Yield when tested in Epson Stylus SX125:

Using the test suite defined in ISO/IEC 24712 provides the following results:

- Average K (Black) Cartridge Yield – Up to 186 standard pages
- Average Cyan Cartridge Yield – Up to 269 standard pages
- Average Magenta Cartridge Yield – Up to 160 standard pages
- Average Yellow Cartridge Yield – Up to 257 standard pages

Using the test page defined in ISO/IEC 19752 provides the following results:

- Average K (Black) Cartridge Yield – Up to 204 standard pages
- Estimated supplemental Cyan Cartridge Yield – Up to 2,638 standard pages
- Estimated supplemental Magenta Cartridge Yield – Up to 3,572 standard pages
- Estimated supplemental Yellow Cartridge Yield – Up to 3,549 standard pages

Values obtained by continuous printing. Declared yield values in accordance with ISO/IEC 24711

Using 24712 Test Suite						
Cartridge Identifier	Color	Average (pages)	Standard Deviation (pages)	90% Lower Confidence (pages)	Number used in calculations/test	Primary/ Supplemental
T1281	K (Black)	193	12	186	12/18	Primary
T1282	Cyan	282	21	269	9/12	Primary
T1283	Magenta	163	7	160	15/21	Primary
T1284	Yellow	269	20	257	9/15	Primary

Using 19752 Test Page						
Cartridge Identifier	Color	Average (pages)	Standard Deviation (pages)	90% Lower Confidence (pages)	Number used in calculations/test	Primary/ Supplemental
T1281	K (Black)	211	12	204	9/9	Primary
T1282	Cyan	2,724	51	2,638	3/3	Supplemental
T1283	Magenta	3,628	33	3,572	3/3	Supplemental
T1284	Yellow	3,615	39	3,549	3/3	Supplemental

Printer Identifier	Epson Stylus SX125
Printer Manufacturer	Epson
Cartridge Identifier	T1281, T1282, T1283, T1284
Cartridge Type	Separate ink supply and print head
Date Tested	5/26/11 – 6/1/11
EOL Criteria	This printer has Ink Out which stops printing. Whichever came first, either Ink Out or Fade, was used as the EOL criteria.
Print mode used	Continuous
Paper Size	4" x 6" borderless photo on 210 x 297mm photo paper
Media used	Epson Premium Glossy Photo Paper (S041624)
Driver version	Driver Version = Epson Color Printing System Version 6.72 The following driver settings were changed from default: Quality Option = Changed to Best Photo from Text. Type = Changed to Epson Premium Glossy from plain papers. Size = Changed to A4 210 x 297 mm from Letter 8 ½ x 11 in.

Declaration of Yield

Inkjet Cartridge Yield when tested in Epson Stylus SX125:

Using the QualityLogic Color Photo test suite provides the following results:

- Average Cyan Cartridge Yield – Up to 62 standard pages
- Average Magenta Cartridge Yield – Up to 60 standard pages
- Average Yellow Cartridge Yield – Up to 92 standard pages
- Estimated supplemental K (Black) Cartridge Yield – Up to 344 standard pages

Values obtained by continuous printing. Declared yield values in accordance with QualityLogic Color Photo Yield Test Methodology

Cartridge Identifier	Color	Average (pages)	Standard Deviation (pages)	90% Lower Confidence (pages)	Number used in calculations/test	Primary/ Supplemental
T1282	Cyan	63	3	62	12/15	Primary
T1283	Magenta	64	7	60	12/15	Primary
T1284	Yellow	94	4	92	9/9	Primary
T1281	K (Black)	374	18	344	3/3	Supplemental

Printer Identifier	Epson Stylus SX215
Printer Manufacturer	Epson
Cartridge Identifier	T0891, T0892, T0893, T0894
Cartridge Type	Separate ink supply and print head
Date Tested	8/6/10 – 8/12/10
EOL Criteria	This printer has Ink Out which stops printing. Whichever came first, either Ink Out or Fade, was used as the EOL criteria.
Print mode used	Continuous
Paper Size	A4
Media used	Hammermill Fore Multi-Purpose, 96 Brightness 20lb. weight
Driver version	Driver Version = Epson Color Printing System Version 6.61 The following driver settings were changed from default: Color Test: Size = Changed to A4 210 x 297 mm from Letter 8 ½ x 11 in Mono Test: Quality Option = Changed to Text from Text & Image Size = Changed to A4 210 x 297 mm from Letter 8 ½ x 11 in

Declaration of Yield

Inkjet Cartridge Yield when tested in Epson Stylus SX215:

Using the test suite defined in ISO/IEC 24712 provides the following results:

- Average K (Black) Cartridge Yield – Up to 178 standard pages
- Average Cyan Cartridge Yield – Up to 188 standard pages
- Average Magenta Cartridge Yield – Up to 140 standard pages
- Average Yellow Cartridge Yield – Up to 227 standard pages

Using the test page defined in ISO/IEC 19752 provides the following results:

- Average K (Black) Cartridge Yield – Up to 199 standard pages
- Estimated supplemental Cyan Cartridge Yield – Up to 1,111 standard pages
- Estimated supplemental Magenta Cartridge Yield – Up to 1,281 standard pages
- Estimated supplemental Yellow Cartridge Yield – Up to 1,552 standard pages

Values obtained by continuous printing. Declared yield values in accordance with ISO/IEC 24711

Using 24712 Test Suite						
Cartridge Identifier	Color	Average (pages)	Standard Deviation (pages)	90% Lower Confidence (pages)	Number used in calculations/test	Primary/ Supplemental
T0891	K (Black)	182	6	178	10/15	Primary
T0892	Cyan	189	2	188	9/15	Primary
T0893	Magenta	143	5	140	13/18	Primary
T0894	Yellow	234	11	227	9/12	Primary

Using 19752 Test Page						
Cartridge Identifier	Color	Average (pages)	Standard Deviation (pages)	90% Lower Confidence (pages)	Number used in calculations/test	Primary/ Supplemental
T0891	K (Black)	204	8	199	9/9	Primary
T0892	Cyan	1,140	17	1,111	3/3	Supplemental
T0893	Magenta	1,308	16	1,281	3/3	Supplemental
T0894	Yellow	1,587	21	1,552	3/3	Supplemental

Printer Identifier	Epson Stylus SX215
Printer Manufacturer	Epson
Cartridge Identifier	T0891, T0892, T0893, T0894
Cartridge Type	Separate ink supply and print head
Date Tested	8/12/10 – 8/17/10
EOL Criteria	This printer has Ink Out which stops printing. Whichever came first, either Ink Out or Fade, was used as the EOL criteria.
Print mode used	Continuous
Paper Size	4" x 6" borderless photo on 210 x 297mm photo paper
Media used	Epson Premium Glossy Photo Paper (S04155)
Driver version	Driver Version = Epson Color Printing System Version 6.61 The following driver settings were changed from default: Quality Option = Changed to Best Photo from Text & Image Type = Changed to Epson Premium Glossy from plain papers Size = Changed to A4 210 x 297 mm from Letter 8 ½ x 11 in

Declaration of Yield

Inkjet Cartridge Yield when tested in Epson Stylus SX215:

Using the QualityLogic Color Photo test suite provides the following results:

- Average Cyan Cartridge Yield – Up to 57 standard pages
- Average Magenta Cartridge Yield – Up to 59 standard pages
- Average Yellow Cartridge Yield – Up to 113 standard pages
- Estimated supplemental K (Black) Cartridge Yield – Up to 324 standard pages

Values obtained by continuous printing. Declared yield values in accordance with QualityLogic Color Photo Yield Test Methodology

Cartridge Identifier	Color	Average (pages)	Standard Deviation (pages)	90% Lower Confidence (pages)	Number used in calculations/test	Primary/ Supplemental
T0892	Cyan	58	2	57	17/18	Primary
T0893	Magenta	60	3	59	15/18	Primary
T0894	Yellow	115	3	113	9/9	Primary
T0891	K (Black)	352	17	324	3/3	Supplemental

Printer Identifier	Epson Stylus SX600FW
Printer Manufacturer	Epson
Cartridge Identifier	T0711, T0712, T0713, T0714
Cartridge Type	Separate ink supply and print head
Date Tested	3/24/09 – 3/31/09
EOL Criteria	This printer has Ink Out which stops printing. Whichever came first, either Ink Out or Fade, was used as the EOL criteria.
Print mode used	Continuous
Paper Size	A4
Media used	Hammermill Fore Multi-Purpose, 96 Brightness 20lb. weight
Driver version	Driver Version = Epson Color Printing System Version 6.61 The following driver settings were changed from default: Color Ink Test: Paper & Quality Options (Advanced tab) = Changed to A4 from Letter Mono Ink Test: Quality Option (Main Tab) = Changed to Text from Text & Image. The "Black Ink Only" option (Advanced tab) was enabled under Print Options Paper & Quality Options (Advanced tab) = Changed to A4 from Letter

Declaration of Yield

Inkjet Cartridge Yield when tested in Epson Stylus SX600FW:

Using the test suite defined in ISO/IEC 24712 provides the following results:

- Average K (Black) Cartridge Yield – Up to 251 standard pages
- Average Cyan Cartridge Yield – Up to 380 standard pages
- Average Magenta Cartridge Yield – Up to 272 standard pages
- Average Yellow Cartridge Yield – Up to 410 standard pages

Using the test page defined in ISO/IEC 19752 provides the following results:

- Average K (Black) Cartridge Yield – Up to 279 standard pages
- Estimated supplemental Cyan Cartridge Yield – Up to 2,579 standard pages
- Estimated supplemental Magenta Cartridge Yield – Up to 4,366 standard pages
- Estimated supplemental Yellow Cartridge Yield – Up to 2,678 standard pages

Values obtained by continuous printing. Declared yield values in accordance with ISO/IEC 24711

Using 24712 Test Suite

Cartridge Identifier	Color	Average (pages)	Standard Deviation (pages)	90% Lower Confidence (pages)	Number used in calculations/test	Primary/ Supplemental
T0711	K (Black)	258	15	251	13/18	Primary
T0712	Cyan	387	11	380	9/15	Primary
T0713	Magenta	278	12	272	12/18	Primary
T0714	Yellow	417	11	410	9/12	Primary

Using 19752 Test Page

Cartridge Identifier	Color	Average (pages)	Standard Deviation (pages)	90% Lower Confidence (pages)	Number used in calculations/test	Primary/ Supplemental
T0711	K (Black)	281	3	279	9/9	Primary
T0712	Cyan	2,797	129	2,579	3/3	Supplemental
T0713	Magenta	4,696	196	4,366	3/3	Supplemental
T0714	Yellow	2,858	107	2,678	3/3	Supplemental

58

Test results and cost information provided by QualityLogic. Tests were performed under laboratory conditions and end-user's results may vary. Test results, ink cartridge pricing and cost per page pricing subject to change without notice by QualityLogic. All test results and cost information are provided "as-is," "as available," and all warranties, expressed or implied, are hereby disclaimed. Users of the information contained herein assume full responsibility and risk of loss resulting from usage thereof.

Printer Identifier	Epson Stylus SX600FW
Printer Manufacturer	Epson
Cartridge Identifier	T0711, T0712, T0713, T0714
Cartridge Type	Separate ink supply and print head
Date Tested	4/1/09 – 4/6/09
EOL Criteria	This printer has Ink Out which stops printing. Whichever came first, either Ink Out or Fade, was used as the EOL criteria.
Print mode used	Continuous
Paper Size	4" x 6" borderless photo on 210 x 297 mm photo paper
Media used	Epson Premium Glossy Photo Paper (S042155)
Driver version	Driver Version = Epson Color Printing System Version 6.61 The following driver settings were changed from default: Paper & Quality Options (Advanced tab) = Changed to Epson Premium Glossy from plain papers Paper & Quality Options (Advanced tab) = Changed to Photo RPM (Max dpi) from Normal Paper & Quality Options (Advanced tab) = Changed to A4 from Letter

Declaration of Yield

Inkjet Cartridge Yield when tested in Epson Stylus SX600FW:

Using the QualityLogic Color Photo test suite provides the following results:

- Average Cyan Cartridge Yield – Up to 105 standard pages
- Average Magenta Cartridge Yield – Up to 106 standard pages
- Average Yellow Cartridge Yield – Up to 127 standard pages
- Estimated supplemental K (Black) Cartridge Yield – Up to 233 standard pages

Values obtained by continuous printing. Declared yield values in accordance with QualityLogic Color Photo Yield Test Methodology

Cartridge Identifier	Color	Average (pages)	Standard Deviation (pages)	90% Lower Confidence (pages)	Number used in calculations/test	Primary/ Supplemental
T0712	Cyan	107	4	105	9/12	Primary
T0713	Magenta	108	3	106	9/12	Primary
T0714	Yellow	131	7	127	9/9	Primary
T0711	K (Black)	259	16	233	3/6	Supplemental

Printer Identifier	HP Deskjet 1050 – J410A
Printer Manufacturer	Hewlett-Packard
Cartridge Identifier	HP 301 – CH561EE, CH562EE
Cartridge Type	Integral ink supply and print head
Date Tested	5/9/11 – 5/12/11
EOL Criteria	Fade was used as the EOL criteria.
Print mode used	Continuous
Paper Size	A4
Media used	Hammermill Fore Multi-Purpose, 96 Brightness 20lb. weight
Driver version	Driver Version = 04.43.07.853 The following driver settings were changed from default: Paper Size = Changed to A4 from Letter.

Declaration of Yield

Inkjet Cartridge Yield when tested in HP Deskjet 1050 – J410A:

Using the test suite defined in ISO/IEC 24712 provides the following results:

Average K (Black) Cartridge Yield – Up to 193 standard pages

Average Tri-Color Cartridge Yield – Up to 158 standard pages

Using the test page defined in ISO/IEC 19752 provides the following results:

Average K (Black) Cartridge Yield – Up to 200 standard pages

Estimated supplemental Tri-Color Cartridge Yield – Up to 1,865 standard pages

Values obtained by continuous printing. Declared yield values in accordance with ISO/IEC 24711

Using 24712 Test Suite						
Cartridge Identifier	Color	Average (pages)	Standard Deviation (pages)	90% Lower Confidence (pages)	Number used in calculations/test	Primary/ Supplemental
HP 301 (CH561EE)	K (Black)	195	4	193	9/12	Primary
HP 301 (CH562EE)	Tri-Color	160	3	158	9/15	Primary

Using 19752 Test Page						
Cartridge Identifier	Color	Average (pages)	Standard Deviation (pages)	90% Lower Confidence (pages)	Number used in calculations/test	Primary/ Supplemental
HP 301 (CH561EE)	K (Black)	202	4	200	9/9	Primary
HP 301 (CH562EE)	Tri-Color	1,904	23	1,865	3/3	Supplemental

Printer Identifier	HP Deskjet 1050 – J410A
Printer Manufacturer	Hewlett-Packard
Cartridge Identifier	HP 301 – CH561EE, CH562EE
Cartridge Type	Integral ink supply and print head
Date Tested	5/12/11 – 5/13/11
EOL Criteria	Fade was used as the EOL criteria.
Print mode used	Continuous
Paper Size	4" x 6" borderless photo on 210 x 297mm photo paper
Media used	HP Premium Plus Photo Paper, (Q1786A)
Driver version	Driver Version = 04.43.07.853 The following driver settings were changed from default: Paper Source = Changed to Photo Paper, Best Quality from Plain Paper, Normal Quality. Paper Size = Changed to A4 from Letter.

Declaration of Yield

<p>Inkjet Cartridge Yield when tested in HP Deskjet 1050 – J410A:</p> <p>Using the QualityLogic Color Photo test suite provides the following results: Average Tri-Color Cartridge Yield – Up to 47 standard pages Estimated supplemental K (Black) Cartridge Yield – Up to 2,511 standard pages</p> <p>Values obtained by continuous printing. Declared yield values in accordance with QualityLogic Color Photo Yield Test Methodology</p>

Cartridge Identifier	Color	Average (pages)	Standard Deviation (pages)	90% Lower Confidence (pages)	Number used in calculations/test	Primary/ Supplemental
HP 301 (CH562EE)	Tri-Color	48	1	47	9/9	Primary
HP 301 (CH561EE)	K (Black)	2,877	217	2,511	3/3	Supplemental

Printer Identifier	HP Officejet 6500 All-in-One
Printer Manufacturer	Hewlett-Packard
Cartridge Identifier	HP 920XL - CD975AE, CD972AE, CD973AE, CD974AE
Cartridge Type	Separate ink supply and print head
Date Tested	5/8/09 - 5/20/09
EOL Criteria	This printer has Ink Out which stops printing. Whichever came first, either Ink Out or Fade, was used as the EOL criteria.
Print mode used	Continuous
Paper Size	A4
Media used	Hammermill Fore Multi-Purpose, 96 Brightness 20lb. weight
Driver version	Driver version = 70.82.15.0 The following driver settings were changed from default: Paper type = Changed to Plain paper from Automatic. Paper sizes = Changed to A4 from Letter.

Declaration of Yield

Inkjet Cartridge Yield when tested in HP Officejet 6500 All-in-One:

Using the test suite defined in ISO/IEC 24712 provides the following results:

- Average K (Black) Cartridge Yield – Up to 1,089 standard pages
- Average Cyan Cartridge Yield – Up to 528 standard pages
- Average Magenta Cartridge Yield – Up to 532 standard pages
- Average Yellow Cartridge Yield – Up to 506 standard pages

Using the test page defined in ISO/IEC 19752 provides the following results:

- Average K (Black) Cartridge Yield – Up to 1,126 standard pages
- Estimated supplemental Cyan Cartridge Yield – Up to 5,264 standard pages
- Estimated supplemental Magenta Cartridge Yield – Up to 5,992 standard pages
- Estimated supplemental Yellow Cartridge Yield – Up to 6,726 standard pages

Values obtained by continuous printing. Declared yield values in accordance with ISO/IEC 24711

Using 24712 Test Suite						
Cartridge Identifier	Color	Average (pages)	Standard Deviation (pages)	90% Lower Confidence (pages)	Number used in calculations/test	Primary/ Supplemental
HP 920XL (CD975AE)	K (Black)	1,091	4	1,089	9/12	Primary
HP 920XL (CD972AE)	Cyan	531	6	528	18/24	Primary
HP 920XL (CD973AE)	Magenta	535	8	532	18/24	Primary
HP 920XL (CD974AE)	Yellow	509	8	506	18/24	Primary

Using 19752 Test Page						
Cartridge Identifier	Color	Average (pages)	Standard Deviation (pages)	90% Lower Confidence (pages)	Number used in calculations/test	Primary/ Supplemental
HP 920XL (CD975AE)	K (Black)	1,130	5	1,126	9/9	Primary
HP 920XL (CD972AE)	Cyan	5,531	158	5,264	3/3	Supplemental
HP 920XL (CD973AE)	Magenta	6,204	126	5,992	3/3	Supplemental
HP 920XL (CD974AE)	Yellow	7,081	211	6,726	3/3	Supplemental

Printer Identifier	HP Officejet 6500 All-in-One
Printer Manufacturer	Hewlett-Packard
Cartridge Identifier	HP 920XL - CD975AE, CD972AE, CD973AE, CD974AE
Cartridge Type	Separate ink supply and print head
Date Tested	5/20/09 - 5/22/09
EOL Criteria	This printer has Ink Out which stops printing. Whichever came first, either Ink Out or Fade, was used as the EOL criteria.
Print mode used	Continuous
Paper Size	4" x 6" borderless photo on 210 x 297mm photo paper
Media used	HP Premium Plus Photo Paper, Q1786A
Driver version	Driver version = 70.82.15.0 The following driver settings were changed from default: Paper type = Changed to HP Premium Plus Photo Papers from Automatic. Print quality = Changed to Best from Automatic Paper sizes = Changed to A4 from Letter.

Declaration of Yield

Inkjet Cartridge Yield when tested in HP Officejet 6500 All-in-One:

Using the QualityLogic Color Photo test suite provides the following results:

- Average Cyan Cartridge Yield – Up to 148 standard pages
- Average Magenta Cartridge Yield – Up to 206 standard pages
- Average Yellow Cartridge Yield – Up to 159 standard pages
- Estimated supplemental K (Black) Cartridge Yield – Up to 7,487 standard pages

Values obtained by continuous printing. Declared yield values in accordance with QualityLogic Color Photo Yield Test Methodology

Cartridge Identifier	Color	Average (pages)	Standard Deviation (pages)	90% Lower Confidence (pages)	Number used in calculations/test	Primary/ Supplemental
HP 920XL (CD972AE)	Cyan	150	3	148	12/15	Primary
HP 920XL (CD973AE)	Magenta	206	1	206	9/9	Primary
HP 920XL (CD974AE)	Yellow	159	-	159	9/12	Primary
HP 920XL (CD975AE)	K (Black)	8,106	367	7,487	3/3	Supplemental

Printer Identifier	HP Photosmart B109n
Printer Manufacturer	Hewlett Packard
Cartridge Identifier	HP 364 – CB316EE, CB318EE, CB319EE, CB320EE
Cartridge Type	Separate ink supply and print head
Date Tested	12/28/10 – 12/30/10
EOL Criteria	Fade was used as the EOL criteria.
Print mode used	Continuous
Paper Size	A4
Media used	Hammermill Fore Multi-Purpose, 96 Brightness 20lb. weight
Driver version	Driver Version = 70.91.411.0 The following driver settings were changed from default: Size = Changed to A4 210x297mm from Letter 8.5x11in.

Declaration of Yield

Inkjet Cartridge Yield when tested in HP Photosmart B109n:

Using the test suite defined in ISO/IEC 24712 provides the following results:

Average K (Black) Cartridge Yield – Up to 293 standard pages

Average Cyan Cartridge Yield – Up to 269 standard pages

Average Magenta Cartridge Yield – Up to 269 standard pages

Average Yellow Cartridge Yield – Up to 269 standard pages

Using the test page defined in ISO/IEC 19752 provides the following results:

Average K (Black) Cartridge Yield – Up to 314 standard pages

Estimated supplemental Cyan Cartridge Yield – Up to 2,384 standard pages

Estimated supplemental Magenta Cartridge Yield – Up to 2,524 standard pages

Estimated supplemental Yellow Cartridge Yield – Up to 3,121 standard pages

Values obtained by continuous printing. Declared yield values in accordance with ISO/IEC 24711

Using 24712 Test Suite						
Cartridge Identifier	Color	Average (pages)	Standard Deviation (pages)	90% Lower Confidence (pages)	Number used in calculations/test	Primary/ Supplemental
HP 364 (CB316EE)	K (Black)	309	26	293	9/12	Primary
HP 364 (CB318EE)	Cyan	273	6	269	9/15	Primary
HP 364 (CB319EE)	Magenta	273	6	269	9/15	Primary
HP 364 (CB320EE)	Yellow	273	6	269	9/15	Primary

Using 19752 Test Page						
Cartridge Identifier	Color	Average (pages)	Standard Deviation (pages)	90% Lower Confidence (pages)	Number used in calculations/test	Primary/ Supplemental
HP 364 (CB316EE)	K (Black)	326	20	314	9/9	Primary
HP 364 (CB318EE)	Cyan	2,548	98	2,384	3/3	Supplemental
HP 364 (CB319EE)	Magenta	2,886	215	2,524	3/3	Supplemental
HP 364 (CB320EE)	Yellow	3,313	114	3,121	3/3	Supplemental

Printer Identifier	HP Photosmart B109n
Printer Manufacturer	Hewlett Packard
Cartridge Identifier	HP 364 – CB316EE, CB318EE, CB319EE, CB320EE
Cartridge Type	Separate ink supply and print head
Date Tested	1/3/11 – 1/4/11
EOL Criteria	Fade was used as the EOL criteria.
Print mode used	Continuous
Paper Size	4" x 6" borderless photo on 210 x 297mm photo paper
Media used	HP Premium Plus Photo Paper, (Q1786A)
Driver version	Driver Version = 70.91.411.0 The following driver settings were changed from default: Paper type = Changed to HP Premium Plus Photo Papers from Plain paper. Print quality = Changed to Best from Normal. Size = Changed to A4 210x297mm from Letter 8.5x11in.

Declaration of Yield

Inkjet Cartridge Yield when tested in HP Photosmart B109n:

Using the QualityLogic Color Photo test suite provides the following results:

- Average Cyan Cartridge Yield – Up to 87 standard pages
- Average Magenta Cartridge Yield – Up to 132 standard pages
- Average Yellow Cartridge Yield – Up to 86 standard pages
- Estimated supplemental K (Black) Cartridge Yield – Up to 1,772 standard pages

Values obtained by continuous printing. Declared yield values in accordance with QualityLogic Color Photo Yield Test Methodology

Cartridge Identifier	Color	Average (pages)	Standard Deviation (pages)	90% Lower Confidence (pages)	Number used in calculations/test	Primary/ Supplemental
HP 364 (CB318EE)	Cyan	91	8	87	12/15	Primary
HP 364 (CB319EE)	Magenta	140	12	132	9/9	Primary
HP 364 (CB320EE)	Yellow	91	8	86	12/15	Primary
HP 364 (CB316EE)	K (Black)	1,955	109	1,772	3/3	Supplemental

Printer Identifier	HP DeskJet F2420
Printer Manufacturer	Hewlett Packard
Cartridge Identifier	HP 300 – CC640EE, CC643EE
Cartridge Type	Integral ink supply and print head
Date Tested	12/14/10 – 12/17/10
EOL Criteria	Fade was used as the EOL criteria.
Print mode used	Continuous
Paper Size	A4
Media used	Hammermill Fore Multi-Purpose, 96 Brightness 20lb. weight
Driver version	Driver Version = 70.91.312.0 The following driver settings were changed from default: Size = Changed to A4 210x297mm from Letter 8.5x11in.

Declaration of Yield

Inkjet Cartridge Yield when tested in HP Deskjet F2420:

Using the test suite defined in ISO/IEC 24712 provides the following results:

Average K (Black) Cartridge Yield – Up to 201 standard pages

Average Tri-color Cartridge Yield – Up to 158 standard pages

Using the test page defined in ISO/IEC 19752 provides the following results:

Average K (Black) Cartridge Yield – Up to 196 standard pages

Estimated supplemental Tri-color Cartridge Yield – Up to 1,158 standard pages

Values obtained by continuous printing. Declared yield values in accordance with ISO/IEC 24711

Using 24712 Test Suite						
Cartridge Identifier	Color	Average (pages)	Standard Deviation (pages)	90% Lower Confidence (pages)	Number used in calculations/test	Primary/ Supplemental
HP 300 (CC640EE)	K (Black)	205	7	201	9/12	Primary
HP 300 (CC643EE)	Tri-color	163	8	158	9/15	Primary

Using 19752 Test Page						
Cartridge Identifier	Color	Average (pages)	Standard Deviation (pages)	90% Lower Confidence (pages)	Number used in calculations/test	Primary/ Supplemental
HP 300 (CC640EE)	K (Black)	203	11	196	9/9	Primary
HP 300 (CC643EE)	Tri-Color	1,238	47	1,158	3/3	Supplemental

Printer Identifier	HP DeskJet F2420
Printer Manufacturer	Hewlett Packard
Cartridge Identifier	HP 300 – CC640EE, CC643EE
Cartridge Type	Integral ink supply and print head
Date Tested	12/20/10 – 12/21/10
EOL Criteria	Fade was used as the EOL criteria.
Print mode used	Continuous
Paper Size	4" x 6" borderless photo on 210 x 297mm photo
Media used	HP Premium Plus Photo Paper, (Q1786A)
Driver version	Driver Version = 70.91.312.0 The following driver settings were changed from default: Paper type = Changed to HP Premium Plus Photo Papers from Plain paper Print Quality = Changed to Best from Normal Size = Changed to A4 210x297mm from Letter 8.5x11in.

Declaration of Yield

Inkjet Cartridge Yield when tested in HP DeskJet F2420:

Using the QualityLogic Color Photo test suite provides the following results:

Average Tri-Color Cartridge Yield – Up to 53 standard pages

Estimated supplemental K (Black) Cartridge Yield – Up to 1,428 standard pages

Values obtained by continuous printing. Declared yield values in accordance with QualityLogic Color Photo Yield Test Methodology

Cartridge Identifier	Color	Average (pages)	Standard Deviation (pages)	90% Lower Confidence (pages)	Number used in calculations/test	Primary/ Supplemental
HP 300 (CC643EE)	Tri-color	55	2	53	9/10	Primary
HP 300 (CC640EE)	K (Black)	1,490	37	1,428	3/4	Supplemental

Printer Identifier	HP Deskjet F4580
Printer Manufacturer	Hewlett Packard
Cartridge Identifier	HP 300 – CC640EE, CC643EE
Cartridge Type	Integral ink supply and print head
Date Tested	8/6/10 – 8/11/10
EOL Criteria	Fade was used as the EOL criteria.
Print mode used	Continuous
Paper Size	A4
Media used	Hammermill Fore Multi-Purpose, 96 Brightness 20lb. weight
Driver version	Driver Version = 70.91.410.0 The following driver settings were changed from default: Size = Changed to A4 210x297mm from Letter 8.5x11in.

Declaration of Yield

Inkjet Cartridge Yield when tested in HP Deskjet F4580:

Using the test suite defined in ISO/IEC 24712 provides the following results:

- Average K (Black) Cartridge Yield – Up to 196 standard pages
- Average Tri-Color Cartridge Yield – Up to 163 standard pages

Using the test page defined in ISO/IEC 19752 provides the following results:

- Average K (Black) Cartridge Yield – Up to 196 standard pages
- Estimated supplemental Tri-Color Cartridge Yield – Up to 1,222 standard pages

Values obtained by continuous printing. Declared yield values in accordance with ISO/IEC 24711

Using 24712 Test Suite						
Cartridge Identifier	Color	Average (pages)	Standard Deviation (pages)	90% Lower Confidence (pages)	Number used in calculations/test	Primary/ Supplemental
HP 300 (CC640EE)	K (Black)	197	3	196	9/12	Primary
HP 300 (CC643EE)	Tri-Color	165	4	163	9/15	Primary

Using 19752 Test Page						
Cartridge Identifier	Color	Average (pages)	Standard Deviation (pages)	90% Lower Confidence (pages)	Number used in calculations/test	Primary/ Supplemental
HP 300 (CC640EE)	K (Black)	199	5	196	9/9	Primary
HP 300 (CC643EE)	Tri-Color	1,228	4	1,222	3/3	Supplemental

Printer Identifier	HP Deskjet F4580
Printer Manufacturer	Hewlett Packard
Cartridge Identifier	HP 300 – CC640EE, CC643EE
Cartridge Type	Integral ink supply and print head
Date Tested	8/11/10 – 8/12/10
EOL Criteria	Fade was used as the EOL criteria.
Print mode used	Continuous
Paper Size	4" x 6" borderless photo on 210 x 297mm photo paper
Media used	HP Premium Plus Photo Paper, (Q1786A)
Driver version	Driver Version = 70.91.410.0 The following driver settings were changed from default: Paper type = Changed to HP Premium Plus Photo Papers from Plain paper Size = Changed to A4 210x297mm from Letter 8.5x11in.

Declaration of Yield

Inkjet Cartridge Yield when tested in HP Deskjet F4580:

Using the QualityLogic Color Photo test suite provides the following results:

Average Tri-Color Cartridge Yield – Up to 52 standard pages

Estimated supplemental K (Black) Cartridge Yield – Up to 1,590 standard pages

Values obtained by continuous printing. Declared yield values in accordance with QualityLogic Color Photo Yield Test Methodology

Cartridge Identifier	Color	Average (pages)	Standard Deviation (pages)	90% Lower Confidence (pages)	Number used in calculations/test	Primary/ Supplemental
HP 300 (CC643EE)	Tri-Color	54	3	52	9/9	Primary
HP 300 (CC640EE)	K (Black)	1,643	31	1,590	3/3	Supplemental

Printer Identifier	HP Officejet J4680
Printer Manufacturer	Hewlett-Packard
Cartridge Identifier	HP 901 - CC653AE, CC656AE
Cartridge Type	Integral ink supply and print head
Date Tested	10/30/09 – 11/5/09
EOL Criteria	Fade
Print mode used	Continuous
Paper Size	A4
Media used	Hammermill Fore Multi-Purpose, 96 Brightness 20lb. weight
Driver version	Driver Version = 61.73.243.0 The following driver settings were changed from default: Color Ink Test: Size = Changed to A4 from Letter Mono Ink Test: Size = Changed to A4 from Letter

Declaration of Yield

Inkjet Cartridge Yield when tested in HP Officejet J4680:

Using the test suite defined in ISO/IEC 24712 provides the following results:

- Average K (Black) Cartridge Yield – Up to 201 standard pages
- Average Tri-color Cartridge Yield – Up to 344 standard pages

Using the test page defined in ISO/IEC 19752 provides the following results:

- Average K (Black) Cartridge Yield – Up to 206 standard pages
- Estimated supplemental Tri-color Cartridge Yield – Up to 2,494 standard pages

Values obtained by continuous printing. Declared yield values in accordance with ISO/IEC 24711

Using 24712 Test Suite

Cartridge Identifier	Color	Average (pages)	Standard Deviation (pages)	90% Lower Confidence (pages)	Number used in calculations/test	Primary/ Supplemental
HP 901 (CC653AE)	K (Black)	203	5	201	15/21	Primary
HP 901 (CC656AE)	Tri-color	350	10	344	9/12	Primary

Using 19752 Test Page

Cartridge Identifier	Color	Average (pages)	Standard Deviation (pages)	90% Lower Confidence (pages)	Number used in calculations/test	Primary/ Supplemental
HP 901 (CC653AE)	K (Black)	207	2	206	9/9	Primary
HP 901 (CC656AE)	Tri-color	2,540	27	2,494	3/3	Supplemental

Printer Identifier	HP Officejet J4680
Printer Manufacturer	Hewlett-Packard
Cartridge Identifier	HP 901 - CC653AE, CC656AE
Cartridge Type	Integral ink supply and print head
Date Tested	11/5/09 – 11/10/09
EOL Criteria	Fade
Print mode used	Continuous
Paper Size	4" x 6" borderless photo on 210 x 297mm photo paper
Media used	HP Premium Plus Photo Paper, High Gloss (Q1786A)
Driver version	Driver Version = 61.73.243.0 The following driver settings were changed from default: Paper type = Changed to HP Premium Plus Photo Papers from Plain paper Size = Changed to A4 from Letter

Declaration of Yield

Inkjet Cartridge Yield when tested in HP Officejet J4680:

Using the QualityLogic Color Photo test suite provides the following results:

Average Tri-color Cartridge Yield – Up to 110 standard pages

Estimated supplemental K (Black) Cartridge Yield – Up to 1,831 standard pages

Values obtained by continuous printing. Declared yield values in accordance with QualityLogic Color Photo Yield Test Methodology

Cartridge Identifier	Color	Average (pages)	Standard Deviation (pages)	90% Lower Confidence (pages)	Number used in calculations/test	Primary/ Supplemental
HP 901 (CC656AE)	Tri-color	115	8	110	9/9	Primary
HP 901 (CC653AE)	K (Black)	1,892	36	1,831	3/3	Supplemental

Printer Identifier	HP Photosmart Premium
Printer Manufacturer	Hewlett-Packard
Cartridge Identifier	HP 364 - CB316EE, CB317EE, CB318EE, CB319EE, CB320EE
Cartridge Type	Separate ink supply and print head
Date Tested	4/6/10 – 4/13/10
EOL Criteria	Fade was used as the EOL criteria.
Print mode used	Continuous
Paper Size	A4
Media used	Hammermill Fore Multi-Purpose, 96 Brightness 20lb. weight
Driver version	Driver Version = 70.101.203.0 The following driver settings were changed from default: Paper type = Changed to Plain paper from Automatic Size = Changed to A4 from Letter.

Declaration of Yield

Inkjet Cartridge Yield when tested in HP Photosmart Premium:

Using the test suite defined in ISO/IEC 24712 provides the following results:

- Average K (Black) Cartridge Yield – Up to 284 standard pages
- Average Cyan Cartridge Yield – Up to 272 standard pages
- Average Magenta Cartridge Yield – Up to 272 standard pages
- Average Yellow Cartridge Yield – Up to 268 standard pages
- Estimated supplemental K (Photo Black) Cartridge Yield – Up to 1,627 standard pages

Using the test page defined in ISO/IEC 19752 provides the following results:

- Average K (Black) Cartridge Yield – Up to 313 standard pages
- Estimated supplemental Cyan Cartridge Yield – Up to 2,332 standard pages
- Estimated supplemental Magenta Cartridge Yield – Up to 2,643 standard pages
- Estimated supplemental Yellow Cartridge Yield – Up to 2,982 standard pages
- Estimated supplemental K (Photo Black) Cartridge Yield – Up to 5,609 standard pages

Values obtained by continuous printing. Declared yield values in accordance with ISO/IEC 24711

Using 24712 Test Suite						
Cartridge Identifier	Color	Average (pages)	Standard Deviation (pages)	90% Lower Confidence (pages)	Number used in calculations/test	Primary/ Supplemental
HP 364 (CB316EE)	K (Black)	293	16	284	9/12	Primary
HP 364 (CB318EE)	Cyan	281	15	272	9/15	Primary
HP 364 (CB319EE)	Magenta	282	15	272	9/15	Primary
HP 364 (CB320EE)	Yellow	281	21	268	9/15	Primary
HP 364 (CB317EE)	K (Photo Black)	1,826	118	1,627	3/6	Supplemental

Using 19752 Test Page						
Cartridge Identifier	Color	Average (pages)	Standard Deviation (pages)	90% Lower Confidence (pages)	Number used in calculations/test	Primary/ Supplemental
HP 364 (CB316EE)	K (Black)	325	18	313	9/9	Primary
HP 364 (CB318EE)	Cyan	2,456	73	2,332	3/3	Supplemental
HP 364 (CB319EE)	Magenta	2,761	70	2,643	3/3	Supplemental
HP 364 (CB320EE)	Yellow	3,138	93	2,982	3/3	Supplemental
HP 364 (CB317EE)	K (Photo Black)	6,169	332	5,609	3/3	Supplemental

Test results and cost information provided by QualityLogic. Tests were performed under laboratory conditions and end-user's results may vary. Test results, ink cartridge pricing and cost per page pricing subject to change without notice by QualityLogic. All test results and cost information are provided "as-is," "as available," and all warranties, expressed or implied, are hereby disclaimed. Users of the information contained herein assume full responsibility and risk of loss resulting from usage thereof.

Printer Identifier	HP Photosmart Premium
Printer Manufacturer	Hewlett-Packard
Cartridge Identifier	HP 364 - CB316EE, CB317EE, CB318EE, CB319EE, CB320EE
Cartridge Type	Separate ink supply and print head
Date Tested	4/14/10 – 4/21/10
EOL Criteria	Fade was used as the EOL criteria.
Print mode used	Continuous
Paper Size	4" x 6" borderless photo on 210 x 297mm photo
Media used	HP Premium Plus Photo Paper, (Q1786A)
Driver version	Driver Version = 70.101.203.0 The following driver settings were changed from default: Paper type = Changed to HP Premium Plus Photo Papers from Automatic Print quality = Changed to Best from Automatic Size = Changed to A4 from Letter

Declaration of Yield

Inkjet Cartridge Yield when tested in HP Photosmart Premium:

Using the QualityLogic Color Photo test suite provides the following results:

- Average Cyan Cartridge Yield – Up to 98 standard pages
- Average Magenta Cartridge Yield – Up to 177 standard pages
- Average Yellow Cartridge Yield – Up to 136 standard pages
- Average K (Photo Black) Cartridge Yield – Up to 154 standard pages
- Estimated supplemental K (Black) Cartridge Yield – Up to 1,422 standard pages

Values obtained by continuous printing. Declared yield values in accordance with QualityLogic Color Photo Yield Test Methodology

Cartridge Identifier	Color	Average (pages)	Standard Deviation (pages)	90% Lower Confidence (pages)	Number used in calculations/test	Primary/ Supplemental
HP 364 (CB318EE)	Cyan	103	11	98	15/18	Primary
HP 364 (CB319EE)	Magenta	188	18	177	9/9	Primary
HP 364 (CB320EE)	Yellow	144	15	136	10/13	Primary
HP 364 (CB317EE)	K (Photo Black)	165	17	154	9/12	Primary
HP 364 (CB316EE)	K (Black)	1,732	184	1,422	3/3	Supplemental

Printer Identifier	Lexmark Intuition S505
Printer Manufacturer	Lexmark
Cartridge Identifier	100 Black, 100 Cyan, 100 Magenta, 100 Yellow
Cartridge Type	Separate ink supply and print head
Date Tested	4/26/10 – 5/3/10
EOL Criteria	This printer has Ink Out which stops printing. Whichever came first, either Ink Out or Fade, was used as the EOL criteria.
Print mode used	Continuous
Paper Size	A4
Media used	Hammermill Fore Multi-Purpose, 96 Brightness 20lb. weight
Driver version	Driver Version = 0.0.0.1 The following driver settings were changed from default: Color Ink Test: Paper Type = Changed to Plain Paper from Automatic Paper size = Changed to A4 (210 x 297 mm) from Letter (8 ½ x 11 in) Mono Ink Test = Paper Type = Changed to Plain Paper from Automatic Paper size = Changed to A4 (210 x 297 mm) from Letter (8 ½ x 11 in) Ink Use = Changed to Print using black ink from Print using all available ink.

Declaration of Yield

Inkjet Cartridge Yield when tested in Lexmark Intuition S505:

Using the test suite defined in ISO/IEC 24712 provides the following results:

Average K (Black) Cartridge Yield – Up to 228 standard pages

Average Cyan Cartridge Yield – Up to 290 standard pages

Average Magenta Cartridge Yield – Up to 236 standard pages

Average Yellow Cartridge Yield – Up to 272 standard pages

Using the test page defined in ISO/IEC 19752 provides the following results:

Average K (Black) Cartridge Yield – Up to 252 standard pages

Estimated supplemental Cyan Cartridge Yield – Up to 4,018 standard pages

Estimated supplemental Magenta Cartridge Yield – Up to 4,015 standard pages

Estimated supplemental Yellow Cartridge Yield – Up to 4,515 standard pages

Values obtained by continuous printing. Declared yield values in accordance with ISO/IEC 24711

Using 24712 Test Suite						
Cartridge Identifier	Color	Average (pages)	Standard Deviation (pages)	90% Lower Confidence (pages)	Number used in calculations/test	Primary/ Supplemental
100 Black	K (Black)	234	11	228	9/15	Primary
100 Cyan	Cyan	296	10	290	9/12	Primary
100 Magenta	Magenta	239	6	236	9/15	Primary
100 Yellow	Yellow	280	12	272	9/15	Primary

Using 19752 Test Page						
Cartridge Identifier	Color	Average (pages)	Standard Deviation (pages)	90% Lower Confidence (pages)	Number used in calculations/test	Primary/ Supplemental
100 Black	K (Black)	258	9	252	9/9	Primary
100 Cyan	Cyan	4,104	51	4,018	3/3	Supplemental
100 Magenta	Magenta	4,235	131	4,015	3/3	Supplemental
100 Yellow	Yellow	4,560	27	4,515	3/3	Supplemental

Test results and cost information provided by QualityLogic. Tests were performed under laboratory conditions and end-user's results may vary. Test results, ink cartridge pricing and cost per page pricing subject to change without notice by QualityLogic. All test results and cost information are provided "as-is," "as available," and all warranties, expressed or implied, are hereby disclaimed. Users of the information contained herein assume full responsibility and risk of loss resulting from usage thereof.

Printer Identifier	Lexmark Intuition S505
Printer Manufacturer	Lexmark
Cartridge Identifier	100 Black, 100 Cyan, 100 Magenta, 100 Yellow
Cartridge Type	Separate ink supply and print head
Date Tested	5/4/10 - 5/7/10
EOL Criteria	This printer has Ink Out which stops printing. Whichever came first, either Ink Out or Fade, was used as the EOL criteria.
Print mode used	Continuous
Paper Size	4" x 6" borderless photo on 210 x 297mm photo paper
Media used	Lexmark Perfectfinish Photo paper (3048567)
Driver version	Driver Version = 0.0.0.1 The following driver settings were changed from default: Quality = Changed to Best from Automatic Paper Type = Changed to Lexmark Perfectfinish Photo paper from Automatic Paper size = Changed to A4 (210 x 297 mm) from Letter (8 ½ x 11 in)

Declaration of Yield

Inkjet Cartridge Yield when tested in Lexmark Intuition S505:

Using the QualityLogic Color Photo test suite provides the following results:

- Average Cyan Cartridge Yield – Up to 64 standard pages
- Average Magenta Cartridge Yield – Up to 77 standard pages
- Average Yellow Cartridge Yield – Up to 91 standard pages
- Estimated supplemental K (Black) Cartridge Yield – Up to 603 standard pages

Values obtained by continuous printing. Declared yield values in accordance with QualityLogic Color Photo Yield Test Methodology

Cartridge Identifier	Color	Average (pages)	Standard Deviation (pages)	90% Lower Confidence (pages)	Number used in calculations/test	Primary/ Supplemental
100 Cyan	Cyan	66	5	64	12/15	Primary
100 Magenta	Magenta	80	5	77	9/12	Primary
100 Yellow	Yellow	93	4	91	9/9	Primary
100 Black	K (Black)	650	28	603	3/3	Supplemental

Printer Identifier	Lexmark X4850
Printer Manufacturer	Lexmark
Cartridge Identifier	42A, 41A
Cartridge Type	Integral ink supply and print head
Date Tested	3/17/08 – 3/20/08
EOL Criteria	Fade was used as the EOL criteria.
Print mode used	Continuous
Paper Size	A4
Media used	HammerMill Fore MP-White, 96 Brightness 20lb. weight
Driver version	Driver Version = 05/29/2007, 1.0.5.1 The following driver settings were changed from default: Paper Type = Changed to Use my choice: Plain from Use printer sensor Paper Size = Changed to A4 from Letter

Declaration of Yield

Inkjet Cartridge Yield when tested in Lexmark X4850:

Using the test suite defined in ISO/IEC 24712 provides the following results:

Average K (Black) Cartridge Yield – Up to 214 standard pages

Average Tri-Color Cartridge Yield – Up to 258 standard pages

Using the test page defined in ISO/IEC 19752 provides the following results:

Average K (Black) Cartridge Yield – Up to 223 standard pages

Estimated supplemental Tri-Color Cartridge Yield – Up to 2,759 standard pages

Values obtained by continuous printing. Declared yield values in accordance with ISO/IEC 24711

Using 24712 Test Suite						
Cartridge Identifier	Color	Average (pages)	Standard Deviation (pages)	90% Lower Confidence (pages)	Number used in calculations/test	Primary/ Supplemental
42A	K (Black)	228	23	214	9/12	Primary
41A	Tri-color	274	26	258	9/10	Primary

Using 19752 Test Page						
Cartridge Identifier	Color	Average (pages)	Standard Deviation (pages)	90% Lower Confidence (pages)	Number used in calculations/test	Primary/ Supplemental
42A	K (Black)	232	13	223	9/9	Primary
41A	Tri-color	2,985	134	2,759	3/3	Supplemental

Printer Identifier	Lexmark X4850
Printer Manufacturer	Lexmark
Cartridge Identifier	42A, 41A
Cartridge Type	Integral ink supply and print head
Date Tested	3/3/08 – 3/4/08
EOL Criteria	Fade was used as the EOL criteria.
Print mode used	Continuous
Paper Size	4" x 6" borderless photo on 210 x 297mm photo paper
Media used	Lexmark PerfectFinish Photo Paper (19Y0205)
Driver version	Driver Version = 05/29/2007, 1.0.5.1 The following driver settings were changed from default: Quality/Speed = Changed to Photo from Automatic Paper Type = Changed to Use my choice: Lexmark PerfectFinish Photo from Use paper sensor Paper Size = Changed to A4 from Letter

Declaration of Yield

Inkjet Cartridge Yield when tested in Lexmark X4850:

Using the QualityLogic Color Photo test suite provides the following results:

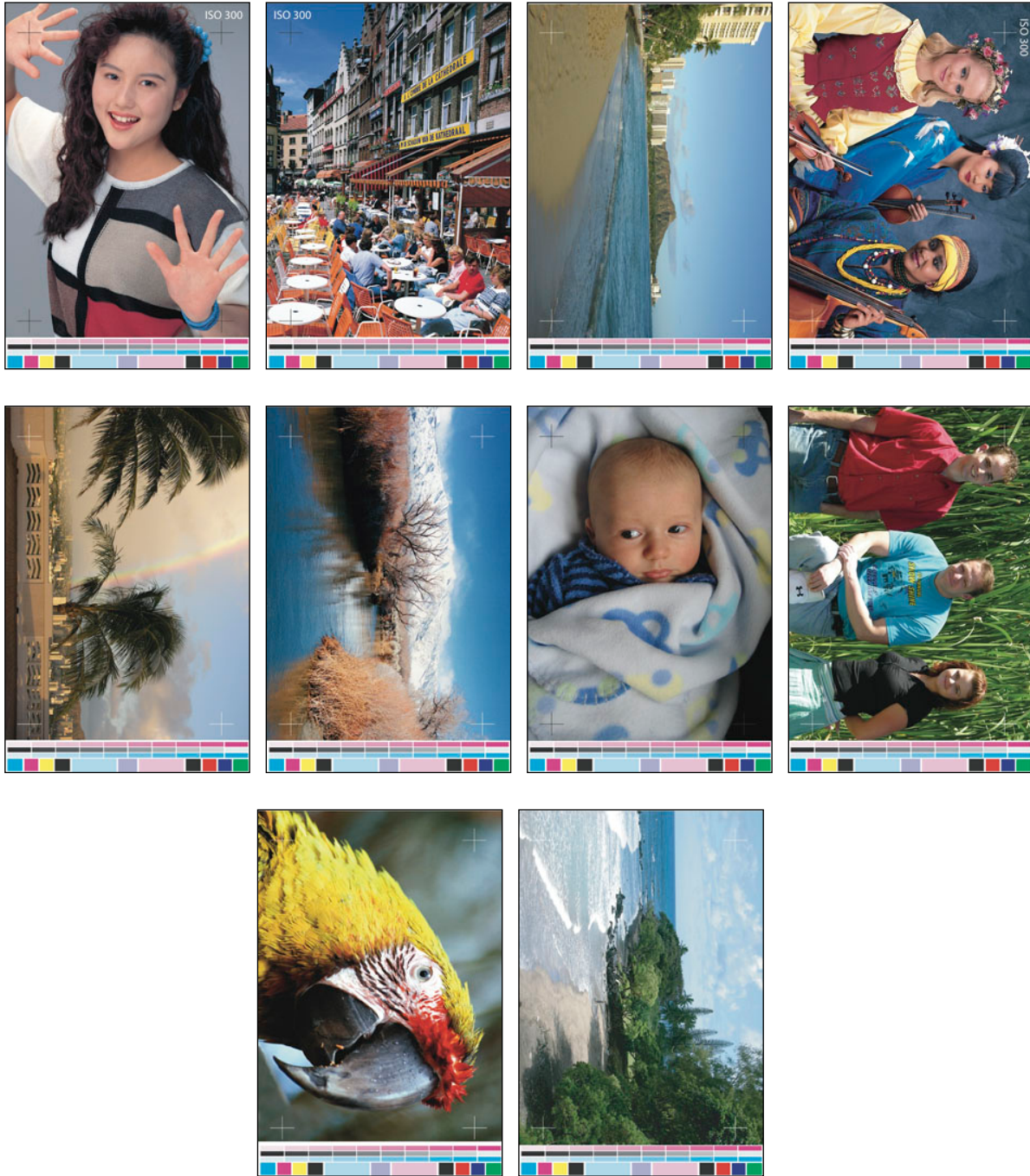
Average Tri-Color Cartridge Yield – Up to 56 standard pages

Estimated supplemental K (Black) Cartridge Yield – Up to 3,262 standard pages

Values obtained by continuous printing. Declared yield values in accordance with QualityLogic Color Photo Yield Test Methodology

Cartridge Identifier	Color	Average (pages)	Standard Deviation (pages)	90% Lower Confidence (pages)	Number used in calculations/test	Primary/ Supplemental
41A	Tri-color	58	3	56	9/12	Primary
42A	K (Black)	3,593	196	3,262	3/3	Supplemental

QualityLogic Photo Test Suite



Test results and cost information provided by QualityLogic. Tests were performed under laboratory conditions and end-user's results may vary. Test results, ink cartridge pricing and cost per page pricing subject to change without notice by QualityLogic. All test results and cost information are provided "as-is," "as available," and all warranties, expressed or implied, are hereby disclaimed. Users of the information contained herein assume full responsibility and risk of loss resulting from usage thereof.