



**Cost of Ink Per Page Analysis  
United States**

**August 2011**

Includes ink cartridge pricing provided by



## TABLE OF CONTENTS

Summary and Scope of Analysis .....	3
Cost of Ink Per Page .....	5
United States: Mono - Cost of Ink Per Page .....	5
United States: Color - Cost of Ink Per Page .....	6
United States: Photo - Cost of Ink Per Page .....	7
Methodology for Calculation of Cost of Ink Per Page .....	8
A. QualityLogic Yield Declarations .....	8
B. Ink Cartridge Pricing .....	13
C. Cost of Ink Per Page – Per Cartridge.....	14
D. Cost of Ink Per Page .....	17
Appendix A: Test Methodology Summary .....	21
Appendix B: QualityLogic Declared Yield Test Results.....	24
Appendix C: Test Pages.....	84

## Summary and Scope of Analysis

For more than 25 years, QualityLogic Inc. has been a premier developer and provider of essential testing solutions to companies that design, build, or purchase printers and printing technology. Our products and services help our customers understand how the products they make or buy conform to specifications, or compare to reference implementations or competing products. We are active members of international standards organizations including ISO and Ecma International, and provide testing assistance to leading technology publications who publish printer reviews.

At the request of Eastman Kodak Company, QualityLogic calculated and compared the Cost of Ink Per Page (CoIPP) of the Kodak of All-in-One Printers to 21 competing printers selected by Kodak. Kodak's intent was to select printers with significant market share from leading manufacturers.

Monochrome and color cartridge yields for all printers were determined following ISO yield standards, and photo yields were determined using QualityLogic's photo yield methodology\*.

Ink prices for printers in the test were provided to QualityLogic by gap intelligence\*\*, a premier global provider of market intelligence. gap intelligence provided the manufacturer's suggested retail price (MSRP) for each of the cartridges in the test based on information collected through Q1 2011. If the cartridge price wasn't available on the manufacturer's website, gap intelligence provided an average of three reseller street prices.

For this report, complete sets of standard as-shipped-in-box cartridges or the standard-yield ink cartridges were evaluated for the purpose of making like-basis comparisons between all printers. Ink cost comparisons are made using single quantity cartridge pricing (i.e., no multi-packs, combo packs, value packs or special promotions.)

Although there are many factors in total cost of ownership, Cost of Ink Per Page (CoIPP) is an important factor when evaluating total cost of ownership with printer systems.

Cost of Ink Per Page was calculated by dividing these cartridge prices by the yield of each cartridge in the test.

\* All references of 'photo' in this report refer to 4x6 inch (approximately 10 x 15 cm) borderless photos, printed on manufacturer's best available photo paper.

\*\* gap intelligence believes that the list pricing information provided is accurate; however, it is not responsible for any errors, inaccuracies, or variances caused by changes made outside of its defined survey period (Q1 2011).

The following printers and corresponding ink cartridges were included in this Cost of Ink Per Page analysis:

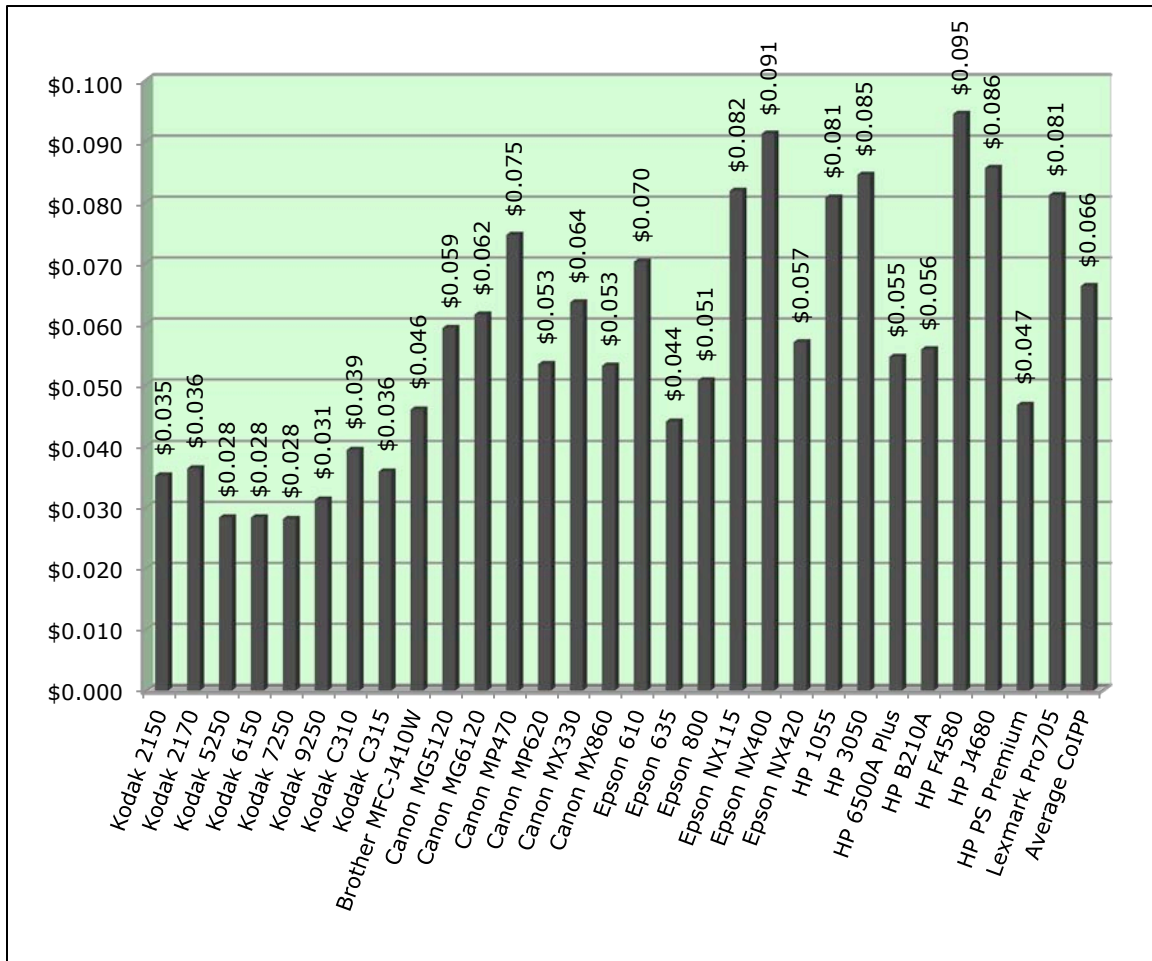
<b>Company</b>	<b>Printer</b>	<b>Cartridges</b>
Kodak	ESP Office 2150 ESP Office 2170 ESP 5250 ESP 6150 ESP 7250 ESP 9250 ESP C310 ESP C315	Black Ink 30, Color Ink 30 Black Ink 30, Color Ink 30 Black Ink 10B, Color Ink 10C Black Ink 10B, Color Ink 10C Black Ink 10B, Color Ink 10C Black Ink 10B, Color Ink 10C Black Ink 30, Color Ink 30 Black Ink 30, Color Ink 30
Brother	MFC-J410W	LC61BK, LC61C, LC61M, LC61Y
Canon	PIXMA MG5120  PIXMA MG6120  PIXMA MP470 PIXMA MP620  PIXMA MX330 PIXMA MX860	PGI-225 PGBK, CLI-226C, CLI-226M, CLI-226Y, CLI-226BK PGI-225 PGBK, CLI-226C, CLI-226M, CLI-226Y, CLI-226BK, CLI-226GY PG-40, CL-41 PGI-220BK, CLI-221C, CLI-221M, CLI-221Y, CLI-221BK PG-210, CL-211 PGI-220BK, CLI-221C, CLI-221M, CLI-221Y, CLI-221BK
Epson	Artisan 800 Stylus NX115 Stylus NX400 Stylus NX420 Workforce 610 Workforce 635	T0981, T0992, T0993, T0994, T0995, T0996 T0881, T0882, T0883, T0884 T0691, T0692, T0693, T0694 T1251, T1252, T1253, T1254 T0691, T0692, T0693, T0694 T1261, T1262, T1263, T1264
Hewlett-Packard	Deskjet 1055 Deskjet 3050 Deskjet F4580 Officejet J4680 Officejet 6500A Plus  Photosmart Plus e-AIO - B210A Photosmart Premium	HP 61 - CH561WN, CH562WN HP 61 - CH561WN, CH562WN HP 60 - CC640WN, CC643WN HP 901 - CC653AN, CC656AN HP 920 - CD971AN, CH634AN, CH635AN, CH636AN HP 564 - CB316WN, CB318WN, CB319WN, CB320WN HP 564 - CB316WN, CB318WN, CB319WN, CB320WN, CB317WN
Lexmark	Prevail Pro705	100 Black, Cyan, Magenta, Yellow

## Cost of Ink Per Page

The following charts summarize the Cost of Ink Per Page for the printers tested using cartridge prices from the United States. There are three charts presented: separate charts for monochrome, color and photo printing. Details of how these costs were calculated can be found in the "Methodology for Calculation of Cost of Ink Per Page" following these graphs.

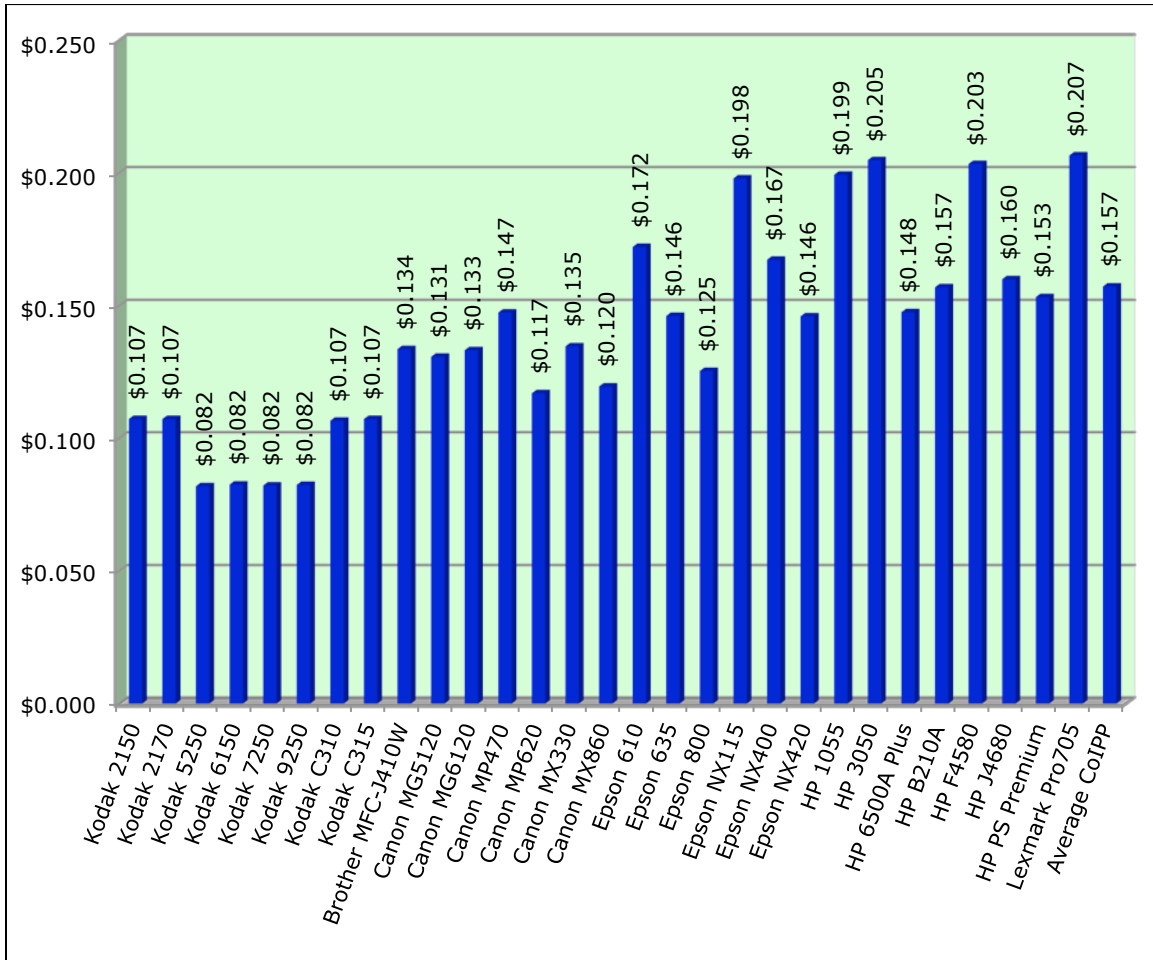
### United States: Mono - Cost of Ink Per Page

(US Dollars)



Note: Average CoIPP (Cost of Ink Per Page) is based on the average cost of ink for all non-Kodak printer models included in this report.

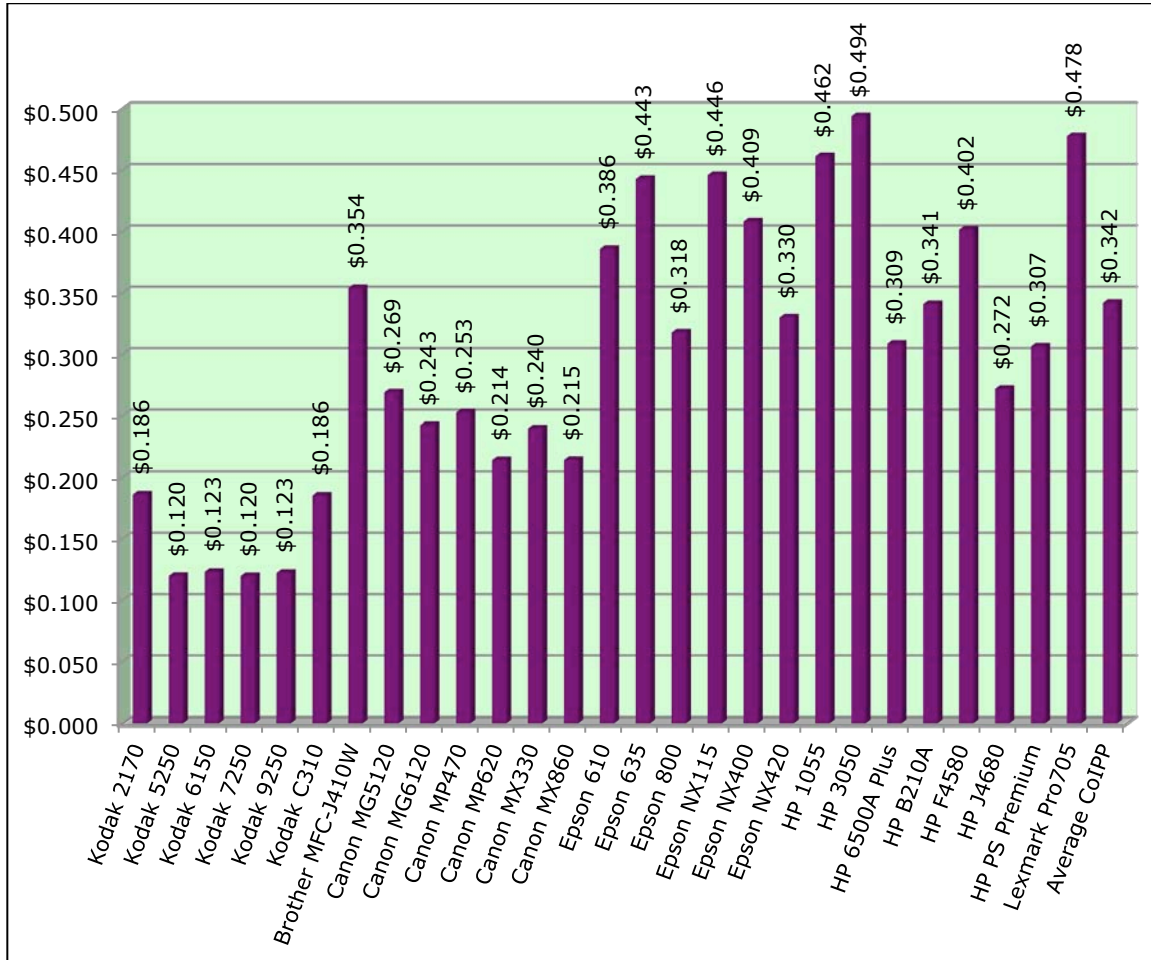
## United States: Color - Cost of Ink Per Page (US Dollars)



Note: Average CoIPP (Cost of Ink Per Page) is based on the average cost of ink for all non-Kodak printer models included in this report.

Test results and cost information provided by QualityLogic. Tests were performed under laboratory conditions and end-user's results may vary. Test results, ink cartridge pricing and cost per page pricing subject to change without notice by QualityLogic. All test results and cost information are provided "as-is," "as available," and all warranties, expressed or implied, are hereby disclaimed. Users of the information contained herein assume full responsibility and risk of loss resulting from usage thereof.

## United States: Photo - Cost of Ink Per Page (US Dollars)



Note: Average CoIPP (Cost of Ink Per Page) is based on the average cost of ink for all non-Kodak printer models included in this report.

\*No photo tests were performed for the Kodak ESP Office 2150 and Kodak ESP C315 printers.

## Methodology for Calculation of Cost of Ink Per Page

The following is a step-by-step outline of how QualityLogic, using standardized yield testing methodologies and standard pricing information provided by gap intelligence, executed this 'Cost of Ink Per Page' test for Kodak.

### **A. QualityLogic Yield Declarations**

Yield testing is a process by which the target printers are operated with their ink or toner cartridges to deplete the amount of ink/toner, and then pages printed are counted to determine the number of pages each cartridge yields. The requirements and operating conditions of such testing are determined by a standard set of testing criteria that will provide an objective and repeatable result.

QualityLogic is a leader worldwide in providing yield testing services. We support and follow the ISO (International Standards Organization) standards for mono and color testing. Use of the ISO standards for yield testing is also supported by leading manufacturers, including Canon, Dell, Epson, HP, IBM, Kodak, Lexmark, Oki Data, Pitney Bowes, Ricoh, Toshiba, Xerox, and others.

The photo yield testing included in this report was completed using the QualityLogic photo yield methodology. ISO announced the release of the new ISO/IEC 29102 photo yield standard as this report was being finalized. Kodak and QualityLogic are evaluating the new ISO standard for use with future testing.

Key provisions of these standards include:

- Standard test suites
- Minimum of nine cartridges across three printers representative of products in open market
- Clear, objective end-of-life criteria
- Controlled test environment – temperature, continuous printing
- Yield reporting requirement well defined

The following pages contain tables that relate to yield testing results. The tables show the number of pages per cartridge that can be expected with 90 percent confidence based on our testing. Numbers in black indicate primary cartridges – any cartridge where a minimum of nine cartridges across three printers could be exhausted. Supplemental cartridges are indicated by red numbers and represent those cartridges that are secondary to the purpose of the test. Although supplemental cartridges are not the key focus in

the tests as shown, they are included in the test reports to ensure we get a complete understanding of the ink being used.

Generally, the 'primary' cartridges for each category of testing are:

- Mono ink – the black cartridge
- Color ink – all full density cartridges containing cyan, magenta, yellow and black
- Photo ink – color cartridges or others where nine cartridges were exhausted

QualityLogic performed yield tests and provided yield test reports for all cartridges for models listed below. Each table has abbreviated sub-headings that represent the specific ink cartridge types as follows:

- CMY = A single cartridge containing cyan, magenta and yellow
- C = Cyan
- M = Magenta
- Y = Yellow
- K1 = Black
- K2 = A second black cartridge
- LC = Light or photo cyan
- LM = Light or photo magenta
- GY = Grey

These yield numbers apply to printers included in this analysis. Yields of primary and supplemental cartridges are reported, and the details of these results can be found in Appendix B.

	Mono Ink Yield								
	CMY	C	M	Y	K1	K2	LC	LM	GY
Kodak 2150	2390				360				
Kodak 2170	2150				356				
Kodak 5250	3514				440				
Kodak 6150	3511				440				
Kodak 7250	3546				444				
Kodak 9250	2338				439				
Kodak C310	1725				344				
Kodak C315	2243				358				
Brother MFC-J410W		9773	14357	12024	564				
Canon MG5120		3387	3803	5115	340	7775			
Canon MG6120		3246	3627	4349	355	7042			4423
Canon MP470	2588				358				
Canon MP620		3228	3498	4551	366	6866			
Canon MX330	2738				286				
Canon MX860		3421	3703	4984	360	7966			
Epson 610		3570	5111	3549	279				
Epson 635		10331	9759	10520	455				
Epson 800		1971	1915	6642	601		1891	2321	
Epson NX115		1716	1693	2582	180				
Epson NX400		1237	1608	1541	259				
Epson NX420		9241	11168	10233	283				
HP 1055	1907				199				
HP 3050	1522				196				
HP 6500A Plus		3275	3607	4273	430				
HP B210A		2099	2437	2682	277				
HP F4580	1160				194				
HP J4680	2458				203				
HP PS Premium		2513	2924	3239	344	6593			
Lexmark Pro705		2826	2903	2906	260				

Note: Kodak's 10C color cartridge includes black and protective inks.

Test results and cost information provided by QualityLogic. Tests were performed under laboratory conditions and end-user's results may vary. Test results, ink cartridge pricing and cost per page pricing subject to change without notice by QualityLogic. All test results and cost information are provided "as-is," "as available," and all warranties, expressed or implied, are hereby disclaimed. Users of the information contained herein assume full responsibility and risk of loss resulting from usage thereof.

	Color Ink Yield								
	CMY	C	M	Y	K1	K2	LC	LM	GY
Kodak 2150	290				221				
Kodak 2170	290				221				
Kodak 5250	427				285				
Kodak 6150	424				283				
Kodak 7250	426				284				
Kodak 9250	425				283				
Kodak C310	292				222				
Kodak C315	290				221				
Brother MFC-J410W		437	375	294	532				
Canon MG5120		552	518	538	324	4574			
Canon MG6120		550	543	530	338	4172			2797
Canon MP470	333				346				
Canon MP620		565	539	546	344	5141			
Canon MX330	265				288				
Canon MX860		564	522	553	329	5054			
Epson 610		403	284	423	246				
Epson 635		463	365	569	400				
Epson 800		969	453	674	574		340	668	
Epson NX115		256	151	238	171				
Epson NX400		400	299	430	255				
Epson NX420		502	288	474	254				
HP 1055	160				188				
HP 3050	151				193				
HP 6500A Plus		311	313	313	387				
HP B210A		261	262	260	284				
HP F4580	157				197				
HP J4680	342				199				
HP PS Premium		278	278	278	298	1894			
Lexmark Pro705		286	237	269	239				

Note: Kodak's 10C color cartridge includes black and protective inks.

Test results and cost information provided by QualityLogic. Tests were performed under laboratory conditions and end-user's results may vary. Test results, ink cartridge pricing and cost per page pricing subject to change without notice by QualityLogic. All test results and cost information are provided "as-is," "as available," and all warranties, expressed or implied, are hereby disclaimed. Users of the information contained herein assume full responsibility and risk of loss resulting from usage thereof.

	Photo Ink Yield								
	CMY	C	M	Y	K1	K2	LC	LM	GY
Kodak 2170	104				743				
Kodak 5250	179				1197				
Kodak 6150	173				1275				
Kodak 7250	179				1205				
Kodak 9250	176				1117				
Kodak C310	104				795				
Brother MFC-J410W		81	105	86	8727				
Canon MG5120		176	189	192	929	546			
Canon MG6120		290	337	308	1863	645			181
Canon MP470	113				1637				
Canon MP620		201	217	213	1952	610			
Canon MX330	92				1336				
Canon MX860		198	217	220	1796	600			
Epson 610		109	109	135	249				
Epson 635		127	117	158	185				
Epson 800		496	357	241	593		102	112	
Epson NX115		65	57	85	191				
Epson NX400		90	91	123	479				
Epson NX420		97	99	192	396				
HP 1055	44				1902				
HP 3050	41				2085				
HP 6500A Plus		92	124	89	2702				
HP B210A		84	105	84	1473				
HP F4580	51				1512				
HP J4680	110				1772				
HP PS Premium		97	185	132	1999	147			
Lexmark Pro705		67	80	87	584				

Note: Kodak's 10C color cartridge includes black and protective inks.

\*No photo tests were performed for the Kodak ESP Office 2150 and Kodak ESP C315 printers.

Test results and cost information provided by QualityLogic. Tests were performed under laboratory conditions and end-user's results may vary. Test results, ink cartridge pricing and cost per page pricing subject to change without notice by QualityLogic. All test results and cost information are provided "as-is," "as available," and all warranties, expressed or implied, are hereby disclaimed. Users of the information contained herein assume full responsibility and risk of loss resulting from usage thereof.

## B. Ink Cartridge Pricing

Cartridge prices used in this Cost of Ink Per Page analysis were researched and provided to QualityLogic by gap intelligence as of Q1 2011. gap intelligence's methodology for data collection used the manufacturer's website for the United States. For this report, complete sets of standard as-shipped-in-box cartridges or the standard-yield ink cartridges were evaluated for the purpose of making like-basis comparisons between all printers. Ink cost comparisons are made using single quantity cartridge pricing (i.e., no multi-packs, combo packs, value packs or special promotions.) Below is the summary of the ink cartridges and their individual prices.

Ink Cartridge Pricing									
	CMY	C	M	Y	K1	K2	LC	LM	GY
Kodak 2150	\$17.99				\$9.99				
Kodak 2170	\$17.99				\$9.99				
Kodak 5250	\$19.99				\$9.99				
Kodak 6150	\$19.99				\$9.99				
Kodak 7250	\$19.99				\$9.99				
Kodak 9250	\$19.99				\$9.99				
Kodak C310	\$17.99				\$9.99				
Kodak C315	\$17.99				\$9.99				
Brother MFC-J410W		\$10.49	\$10.49	\$10.49	\$24.49				
Canon MG5120		\$13.99	\$13.99	\$13.99	\$15.99	\$13.99			
Canon MG6120		\$13.99	\$13.99	\$13.99	\$15.99	\$13.99			\$13.99
Canon MP470	\$26.99				\$22.99				
Canon MP620		\$12.99	\$12.99	\$12.99	\$14.99	\$12.99			
Canon MX330	\$20.99				\$15.99				
Canon MX860		\$12.99	\$12.99	\$12.99	\$14.99	\$12.99			
Epson 610		\$12.34	\$12.34	\$12.34	\$16.99				
Epson 635		\$15.19	\$15.19	\$15.19	\$18.04				
Epson 800		\$10.44	\$10.44	\$10.44	\$17.09		\$10.44	\$10.44	
Epson NX115		\$8.54	\$8.54	\$8.54	\$12.34				
Epson NX400		\$12.34	\$12.34	\$12.34	\$16.99				
Epson NX420		\$11.39	\$11.39	\$11.39	\$15.19				
HP 1055	\$19.99				\$13.99				
HP 3050	\$19.99				\$13.99				
HP 6500A Plus		\$9.99	\$9.99	\$9.99	\$19.99				
HP B210A		\$9.99	\$9.99	\$9.99	\$11.99				
HP F4580	\$19.99				\$14.99				
HP J4680	\$28.99				\$14.99				
HP PS Premium		\$9.99	\$9.99	\$9.99	\$11.99	\$9.99			
Lexmark Pro705		\$11.49	\$11.49	\$11.49	\$17.99				

US Dollars

Source: gap intelligence

Test results and cost information provided by QualityLogic. Tests were performed under laboratory conditions and end-user's results may vary. Test results, ink cartridge pricing and cost per page pricing subject to change without notice by QualityLogic. All test results and cost information are provided "as-is," "as available," and all warranties, expressed or implied, are hereby disclaimed. Users of the information contained herein assume full responsibility and risk of loss resulting from usage thereof.

### C. Cost of Ink Per Page – Per Cartridge

QualityLogic calculated the Cost of Ink Per Page per cartridge by dividing the price of each cartridge (as defined by the gap intelligence localized cartridge price, noted above in Section B) by the yield for each cartridge in each model (as defined above in Section A). This calculation results in the Cost of Ink Per Page per cartridge for each test mode: mono, color and photo.

$$\frac{\text{Price per cartridge}}{\text{Ink yield (in number of pages/photos)}} = \text{Cost of Ink Per Page – per cartridge}$$

#### Mono Cost of Ink Per Individual Cartridge per Page (US Dollars)

	Mono Ink Cost								
	CMY	C	M	Y	K1	K2	LC	LM	GY
Kodak 2150	\$0.008				\$0.028				
Kodak 2170	\$0.008				\$0.028				
Kodak 5250	\$0.006				\$0.023				
Kodak 6150	\$0.006				\$0.023				
Kodak 7250	\$0.006				\$0.023				
Kodak 9250	\$0.009				\$0.023				
Kodak C310	\$0.010				\$0.029				
Kodak C315	\$0.008				\$0.028				
Brother MFC-J410W		\$0.001	\$0.001	\$0.001	\$0.043				
Canon MG5120		\$0.004	\$0.004	\$0.003	\$0.047	\$0.002			
Canon MG6120		\$0.004	\$0.004	\$0.003	\$0.045	\$0.002			\$0.003
Canon MP470	\$0.010				\$0.064				
Canon MP620		\$0.004	\$0.004	\$0.003	\$0.041	\$0.002			
Canon MX330	\$0.008				\$0.056				
Canon MX860		\$0.004	\$0.004	\$0.003	\$0.042	\$0.002			
Epson 610		\$0.003	\$0.002	\$0.003	\$0.061				
Epson 635		\$0.001	\$0.002	\$0.001	\$0.040				
Epson 800		\$0.005	\$0.005	\$0.002	\$0.028		\$0.006	\$0.004	
Epson NX115		\$0.005	\$0.005	\$0.003	\$0.069				
Epson NX400		\$0.010	\$0.008	\$0.008	\$0.066				
Epson NX420		\$0.001	\$0.001	\$0.001	\$0.054				
HP 1055	\$0.010				\$0.070				
HP 3050	\$0.013				\$0.071				
HP 6500A Plus		\$0.003	\$0.003	\$0.002	\$0.046				
HP B210A		\$0.005	\$0.004	\$0.004	\$0.043				
HP F4580	\$0.017				\$0.077				
HP J4680	\$0.012				\$0.074				
HP PS Premium		\$0.004	\$0.003	\$0.003	\$0.035	\$0.002			
Lexmark Pro705		\$0.004	\$0.004	\$0.004	\$0.069				

Test results and cost information provided by QualityLogic. Tests were performed under laboratory conditions and end-user's results may vary. Test results, ink cartridge pricing and cost per page pricing subject to change without notice by QualityLogic. All test results and cost information are provided "as-is," "as available," and all warranties, expressed or implied, are hereby disclaimed. Users of the information contained herein assume full responsibility and risk of loss resulting from usage thereof.

**Color Cost of Ink Per Individual Cartridge per Page**  
(US Dollars)

	Color Ink Cost								
	CMY	C	M	Y	K1	K2	LC	LM	GY
Kodak 2150	\$0.062				\$0.045				
Kodak 2170	\$0.062				\$0.045				
Kodak 5250	\$0.047				\$0.035				
Kodak 6150	\$0.047				\$0.035				
Kodak 7250	\$0.047				\$0.035				
Kodak 9250	\$0.047				\$0.035				
Kodak C310	\$0.062				\$0.045				
Kodak C315	\$0.062				\$0.045				
Brother MFC-J410W		\$0.024	\$0.028	\$0.036	\$0.046				
Canon MG5120		\$0.025	\$0.027	\$0.026	\$0.049	\$0.003			
Canon MG6120		\$0.025	\$0.026	\$0.026	\$0.047	\$0.003			\$0.005
Canon MP470	\$0.081				\$0.066				
Canon MP620		\$0.023	\$0.024	\$0.024	\$0.044	\$0.003			
Canon MX330	\$0.079				\$0.056				
Canon MX860		\$0.023	\$0.025	\$0.023	\$0.046	\$0.003			
Epson 610		\$0.031	\$0.043	\$0.029	\$0.069				
Epson 635		\$0.033	\$0.042	\$0.027	\$0.045				
Epson 800		\$0.011	\$0.023	\$0.015	\$0.030		\$0.031	\$0.016	
Epson NX115		\$0.033	\$0.057	\$0.036	\$0.072				
Epson NX400		\$0.031	\$0.041	\$0.029	\$0.067				
Epson NX420		\$0.023	\$0.040	\$0.024	\$0.060				
HP 1055	\$0.125				\$0.074				
HP 3050	\$0.132				\$0.072				
HP 6500A Plus		\$0.032	\$0.032	\$0.032	\$0.052				
HP B210A		\$0.038	\$0.038	\$0.038	\$0.042				
HP F4580	\$0.127				\$0.076				
HP J4680	\$0.085				\$0.075				
HP PS Premium		\$0.036	\$0.036	\$0.036	\$0.040	\$0.005			
Lexmark Pro705		\$0.040	\$0.048	\$0.043	\$0.075				

Test results and cost information provided by QualityLogic. Tests were performed under laboratory conditions and end-user's results may vary. Test results, ink cartridge pricing and cost per page pricing subject to change without notice by QualityLogic. All test results and cost information are provided "as-is," "as available," and all warranties, expressed or implied, are hereby disclaimed. Users of the information contained herein assume full responsibility and risk of loss resulting from usage thereof.

**Photo Cost of Ink Per Individual Cartridge per Page**  
(US Dollars)

	Photo Ink Cost								
	CMY	C	M	Y	K1	K2	LC	LM	GY
Kodak 2170	\$0.173				\$0.013				
Kodak 5250	\$0.112				\$0.008				
Kodak 6150	\$0.116				\$0.008				
Kodak 7250	\$0.112				\$0.008				
Kodak 9250	\$0.114				\$0.009				
Kodak C310	\$0.173				\$0.013				
Brother MFC-J410W		\$0.130	\$0.100	\$0.122	\$0.003				
Canon MG5120		\$0.079	\$0.074	\$0.073	\$0.017	\$0.026			
Canon MG6120		\$0.048	\$0.042	\$0.045	\$0.009	\$0.022			\$0.077
Canon MP470	\$0.239				\$0.014				
Canon MP620		\$0.065	\$0.060	\$0.061	\$0.008	\$0.021			
Canon MX330	\$0.228				\$0.012				
Canon MX860		\$0.066	\$0.060	\$0.059	\$0.008	\$0.022			
Epson 610		\$0.113	\$0.113	\$0.091	\$0.068				
Epson 635		\$0.120	\$0.130	\$0.096	\$0.098				
Epson 800		\$0.021	\$0.029	\$0.043	\$0.029		\$0.102	\$0.093	
Epson NX115		\$0.131	\$0.150	\$0.100	\$0.065				
Epson NX400		\$0.137	\$0.136	\$0.100	\$0.035				
Epson NX420		\$0.117	\$0.115	\$0.059	\$0.038				
HP 1055	\$0.454				\$0.007				
HP 3050	\$0.488				\$0.007				
HP 6500A Plus		\$0.109	\$0.081	\$0.112	\$0.007				
HP B210A		\$0.119	\$0.095	\$0.119	\$0.008				
HP F4580	\$0.392				\$0.010				
HP J4680	\$0.264				\$0.008				
HP PS Premium		\$0.103	\$0.054	\$0.076	\$0.006	\$0.068			
Lexmark Pro705		\$0.171	\$0.144	\$0.132	\$0.031				

\*No photo tests were performed for the Kodak ESP Office 2150 and Kodak ESP C315 printers.

Test results and cost information provided by QualityLogic. Tests were performed under laboratory conditions and end-user's results may vary. Test results, ink cartridge pricing and cost per page pricing subject to change without notice by QualityLogic. All test results and cost information are provided "as-is," "as available," and all warranties, expressed or implied, are hereby disclaimed. Users of the information contained herein assume full responsibility and risk of loss resulting from usage thereof.

## D. Cost of Ink Per Page

Cost of Ink Per Page for each printer is calculated by summing the Cost of Ink Per Page per cartridge for each cartridge tested in a given printer model (as determined above in Section C).

$$\text{Cost of Ink Per Page} = \text{CMY} + \text{C} + \text{M} + \text{Y} + \text{K1} + \text{K2} + \text{LC} + \text{LM} + \text{GY}$$

The Cost of Ink Per Page per printer is reflected below. Note that, due to rounding, the total CoIPP may not match the individual ink cartridge costs.

### Mono Cost of Ink Per Individual Cartridge and Total Cost of Ink Per Page (US Dollars)

	Mono Ink Cost									Mono CoIPP
	CMY	C	M	Y	K1	K2	LC	LM	GY	
Kodak 2150	\$0.008				\$0.028					\$0.035
Kodak 2170	\$0.008				\$0.028					\$0.036
Kodak 5250	\$0.006				\$0.023					\$0.028
Kodak 6150	\$0.006				\$0.023					\$0.028
Kodak 7250	\$0.006				\$0.023					\$0.028
Kodak 9250	\$0.009				\$0.023					\$0.031
Kodak C310	\$0.010				\$0.029					\$0.039
Kodak C315	\$0.008				\$0.028					\$0.036
Brother MFC-J410W		\$0.001	\$0.001	\$0.001	\$0.043					\$0.046
Canon MG5120		\$0.004	\$0.004	\$0.003	\$0.047	\$0.002				\$0.059
Canon MG6120		\$0.004	\$0.004	\$0.003	\$0.045	\$0.002			\$0.003	\$0.062
Canon MP470	\$0.010				\$0.064					\$0.075
Canon MP620		\$0.004	\$0.004	\$0.003	\$0.041	\$0.002				\$0.053
Canon MX330	\$0.008				\$0.056					\$0.064
Canon MX860		\$0.004	\$0.004	\$0.003	\$0.042	\$0.002				\$0.053
Epson 610		\$0.003	\$0.002	\$0.003	\$0.061					\$0.070
Epson 635		\$0.001	\$0.002	\$0.001	\$0.040					\$0.044
Epson 800		\$0.005	\$0.005	\$0.002	\$0.028		\$0.006	\$0.004		\$0.051
Epson NX115		\$0.005	\$0.005	\$0.003	\$0.069					\$0.082
Epson NX400		\$0.010	\$0.008	\$0.008	\$0.066					\$0.091
Epson NX420		\$0.001	\$0.001	\$0.001	\$0.054					\$0.057
HP 1055	\$0.010				\$0.070					\$0.081
HP 3050	\$0.013				\$0.071					\$0.085
HP 6500A Plus		\$0.003	\$0.003	\$0.002	\$0.046					\$0.055
HP B210A		\$0.005	\$0.004	\$0.004	\$0.043					\$0.056
HP F4580	\$0.017				\$0.077					\$0.095
HP J4680	\$0.012				\$0.074					\$0.086
HP PS Premium		\$0.004	\$0.003	\$0.003	\$0.035	\$0.002				\$0.047
Lexmark Pro705		\$0.004	\$0.004	\$0.004	\$0.069					\$0.081

Test results and cost information provided by QualityLogic. Tests were performed under laboratory conditions and end-user's results may vary. Test results, ink cartridge pricing and cost per page pricing subject to change without notice by QualityLogic. All test results and cost information are provided "as-is," "as available," and all warranties, expressed or implied, are hereby disclaimed. Users of the information contained herein assume full responsibility and risk of loss resulting from usage thereof.

**Color Cost of Ink Per Individual Cartridge and Total Cost of Ink Per Page**  
(US Dollars)

	Color Ink Cost									Color CoIPP
	CMY	C	M	Y	K1	K2	LC	LM	GY	
Kodak 2150	\$0.062				\$0.045					\$0.107
Kodak 2170	\$0.062				\$0.045					\$0.107
Kodak 5250	\$0.047				\$0.035					\$0.082
Kodak 6150	\$0.047				\$0.035					\$0.082
Kodak 7250	\$0.047				\$0.035					\$0.082
Kodak 9250	\$0.047				\$0.035					\$0.082
Kodak C310	\$0.062				\$0.045					\$0.107
Kodak C315	\$0.062				\$0.045					\$0.107
Brother MFC-J410W		\$0.024	\$0.028	\$0.036	\$0.046					\$0.134
Canon MG5120		\$0.025	\$0.027	\$0.026	\$0.049	\$0.003				\$0.131
Canon MG6120		\$0.025	\$0.026	\$0.026	\$0.047	\$0.003			\$0.005	\$0.133
Canon MP470	\$0.081				\$0.066					\$0.147
Canon MP620		\$0.023	\$0.024	\$0.024	\$0.044	\$0.003				\$0.117
Canon MX330	\$0.079				\$0.056					\$0.135
Canon MX860		\$0.023	\$0.025	\$0.023	\$0.046	\$0.003				\$0.120
Epson 610		\$0.031	\$0.043	\$0.029	\$0.069					\$0.172
Epson 635		\$0.033	\$0.042	\$0.027	\$0.045					\$0.146
Epson 800		\$0.011	\$0.023	\$0.015	\$0.030		\$0.031	\$0.016		\$0.125
Epson NX115		\$0.033	\$0.057	\$0.036	\$0.072					\$0.198
Epson NX400		\$0.031	\$0.041	\$0.029	\$0.067					\$0.167
Epson NX420		\$0.023	\$0.040	\$0.024	\$0.060					\$0.146
HP 1055	\$0.125				\$0.074					\$0.199
HP 3050	\$0.132				\$0.072					\$0.205
HP 6500A Plus		\$0.032	\$0.032	\$0.032	\$0.052					\$0.148
HP B210A		\$0.038	\$0.038	\$0.038	\$0.042					\$0.157
HP F4580	\$0.127				\$0.076					\$0.203
HP J4680	\$0.085				\$0.075					\$0.160
HP PS Premium		\$0.036	\$0.036	\$0.036	\$0.040	\$0.005				\$0.153
Lexmark Pro705		\$0.040	\$0.048	\$0.043	\$0.075					\$0.207

Test results and cost information provided by QualityLogic. Tests were performed under laboratory conditions and end-user's results may vary. Test results, ink cartridge pricing and cost per page pricing subject to change without notice by QualityLogic. All test results and cost information are provided "as-is," "as available," and all warranties, expressed or implied, are hereby disclaimed. Users of the information contained herein assume full responsibility and risk of loss resulting from usage thereof.

**Photo Cost of Ink Per Individual Cartridge and Total Cost of Ink Per Page**  
(US Dollars)

	Photo Ink Cost									Photo
	CMY	C	M	Y	K1	K2	LC	LM	GY	CoIPP
Kodak 2170	\$0.173				\$0.013					\$0.186
Kodak 5250	\$0.112				\$0.008					\$0.120
Kodak 6150	\$0.116				\$0.008					\$0.123
Kodak 7250	\$0.112				\$0.008					\$0.120
Kodak 9250	\$0.114				\$0.009					\$0.123
Kodak C310	\$0.173				\$0.013					\$0.186
Brother MFC-J410W		\$0.130	\$0.100	\$0.122	\$0.003					\$0.354
Canon MG5120		\$0.079	\$0.074	\$0.073	\$0.017	\$0.026				\$0.269
Canon MG6120		\$0.048	\$0.042	\$0.045	\$0.009	\$0.022			\$0.077	\$0.243
Canon MP470	\$0.239				\$0.014					\$0.253
Canon MP620		\$0.065	\$0.060	\$0.061	\$0.008	\$0.021				\$0.214
Canon MX330	\$0.228				\$0.012					\$0.240
Canon MX860		\$0.066	\$0.060	\$0.059	\$0.008	\$0.022				\$0.215
Epson 610		\$0.113	\$0.113	\$0.091	\$0.068					\$0.386
Epson 635		\$0.120	\$0.130	\$0.096	\$0.098					\$0.443
Epson 800		\$0.021	\$0.029	\$0.043	\$0.029		\$0.102	\$0.093		\$0.318
Epson NX115		\$0.131	\$0.150	\$0.100	\$0.065					\$0.446
Epson NX400		\$0.137	\$0.136	\$0.100	\$0.035					\$0.409
Epson NX420		\$0.117	\$0.115	\$0.059	\$0.038					\$0.330
HP 1055	\$0.454				\$0.007					\$0.462
HP 3050	\$0.488				\$0.007					\$0.494
HP 6500A Plus		\$0.109	\$0.081	\$0.112	\$0.007					\$0.309
HP B210A		\$0.119	\$0.095	\$0.119	\$0.008					\$0.341
HP F4580	\$0.392				\$0.010					\$0.402
HP J4680	\$0.264				\$0.008					\$0.272
HP PS Premium		\$0.103	\$0.054	\$0.076	\$0.006	\$0.068				\$0.307
Lexmark Pro705		\$0.171	\$0.144	\$0.132	\$0.031					\$0.478

\*No photo tests were performed for the Kodak ESP Office 2150 and Kodak ESP C315 printers.

Test results and cost information provided by QualityLogic. Tests were performed under laboratory conditions and end-user's results may vary. Test results, ink cartridge pricing and cost per page pricing subject to change without notice by QualityLogic. All test results and cost information are provided "as-is," "as available," and all warranties, expressed or implied, are hereby disclaimed. Users of the information contained herein assume full responsibility and risk of loss resulting from usage thereof.

## Contact Information

For information regarding this Cost of Ink Per Page Analysis, please contact the following person/s:

**QualityLogic:**



**QualityLogic**

Dave Jollota  
President & CEO  
Phone: +1-805-531-9030 x122  
[djollota@qualitylogic.com](mailto:djollota@qualitylogic.com)

Gary James  
General Manager, Testing Services Group  
Phone: +1-805-531-9030 x151  
[gjames@qualitylogic.com](mailto:gjames@qualitylogic.com)

**gap intelligence:**



**gap intelligence**

Tom Young  
Director of Business Development  
Phone: +1-619-574-1100 x228  
Fax: +1-619-574-6600  
[tyoung@gapintelligence.com](mailto:tyoung@gapintelligence.com)

### **gap intelligence - Company Overview**

gap intelligence is a global leader in providing timely, actionable competitive intelligence solutions to help manufacturers in the digital imaging space stay ahead of the competition. gap intelligence printer hardware and supplies databases are updated on a weekly basis with street pricing and promotional data. Dedicated industry analysts publish insightful, analytical reports and tools to help clients make smarter decisions and respond to market changes faster.

## Appendix A: Test Methodology Summary

In order to obtain these yield results, three different methodologies were used in combination with three test suites. This section will detail the common areas between the methodologies, the differences between them, and highlight some key terms from ISO/IEC 24711, 24712, and 19752 that are particularly important to understand when reviewing these yield claims.

### Common Methodology and Definitions

Number of Printers Tested	Minimum of three
Number of Cartridges Tested	Minimum of nine of each primary cartridge
Temperature	Testing room average 23.0°C ± 2°C with all running average temperatures between 20.0°C and 26.0°C
Fade	Phenomenon in which a significant reduction in uniformity occurs due to ink depletion
Ink Out	Signal generated by the printing system when the usable ink in the system is depleted and the printer stops printing
End of Life (EOL)	A condition determined by one of two mechanisms: fade or ink out (only if ink out stops printing)
Semi-Continuous Printing	Printing in a continuous manner, pausing only for intra-job servicing, printer calibrations, paper changes, breaks, and end of work days
Declared Cartridge Yield	Cartridge Yield (in pages) that is at or below the lower 90% confidence bound of the average yield
Estimated Supplemental Cartridge Yield	Estimated yield for a supplemental cartridge (real or estimated with use of a proxy) calculated with at least three cartridges
Average Supplemental Cartridge Yield	Average yield for a supplemental cartridge where EOL was reached on at least nine cartridges (three per printer)
Proxy Cartridge	A primary cartridge of the same physical size as a supplemental cartridge which had a starting weight within +/- 10% of the supplemental cartridge starting weight

**Mono Ink Methodology and Definitions –  
In accordance with ISO/IEC 24711, ISO/IEC 19752**

Test Suite	ISO/IEC 19752
Driver Set-up	See Color Ink Methodology. In addition, if a "Black Only" or "Text Only" mode was available in the driver, it was enabled
Paper	A4 or 8 ½" x 11" (see individual test reports)
Semi-Continuous Printing	Each copy of the test suite was printed as a separate one-page print job allowing for some intra-job servicing and calibration to take place
Primary Cartridge	The black cartridge or, if no black cartridge was present, the color cartridges that were used to develop composite black
Supplemental Cartridge	Any installed cartridge except the full density black cartridge, including the full density cyan, magenta, and yellow cartridges, as well as any photo cartridges
Individual Cartridge Yield	The number of test pages printed between cartridge installation and end of life

**Color Ink Methodology and Definitions –  
In accordance with ISO/IEC 24711, ISO/IEC 24712**

Test Suite	ISO/IEC 24712
Driver Set-up	All image and print quality modifiers were set to their factory pre-set configuration for the printer and default installed condition for the driver. If auto media detection was available on the printer, it was disabled and media-type set to plain paper
Paper	A4 or 8 ½" by 11" (see individual test reports)
Semi-Continuous Printing	Each copy of the test suite was printed as a separate five-page print job allowing for some intra-job servicing and calibration to take place
Primary Cartridge	Cartridge containing full density black, cyan, magenta, or yellow, or a combination of full density cyan, magenta and yellow
Supplemental Cartridge	Cartridge other than the full density cyan, magenta, yellow and black cartridges
Individual Cartridge Yield	Value determined by counting the number of diagnostic pages (last page of the test page suite) printed between cartridge installation and end of life, and multiplying by five

**Photo Ink Methodology and Definitions –  
In accordance with QualityLogic Color Photo Cartridge Yield Test  
Methodology**

Test Suite	QualityLogic Color Photo Suite
Driver Set-up	The highest print quality mode readily available in the driver
Paper	The best photo paper recommended by each manufacturer. A4 or 8 ½" x 11" papers were used to print a borderless 4" x 6" (approximately 10 x 15 cm) photo. (See individual test reports)
Semi-Continuous Printing	Each copy of the test suite was printed as a separate 10-page print job allowing for some intra-job servicing and calibration to take place
Primary Cartridge	Cyan, magenta, yellow and photo cartridges or any cartridges containing these colors were considered as primary cartridges. In addition, any other cartridge that exhausted nine or more cartridges during the execution of nine of the above cartridges was considered as primary
Supplemental Cartridge	Any cartridge installed in the printer while printing photos that did not meet the definition of a primary cartridge was considered a supplemental cartridge
Individual Cartridge Yield	The number of test pages printed between cartridge installation and end of life

Test results and cost information provided by QualityLogic. Tests were performed under laboratory conditions and end-user's results may vary. Test results, ink cartridge pricing and cost per page pricing subject to change without notice by QualityLogic. All test results and cost information are provided "as-is," "as available," and all warranties, expressed or implied, are hereby disclaimed. Users of the information contained herein assume full responsibility and risk of loss resulting from usage thereof.

## Appendix B: QualityLogic Declared Yield Test Results

The following data was extracted from the Yield Reports for each product tested – complete reports are available upon request.

<b>Printer Identifier</b>	<b>Kodak ESP Office 2150</b>
Printer Manufacturer	Kodak
Cartridge Identifier	Black 30, Color 30
Cartridge Type	Separate ink supply and print head
Date Tested	6/30/11 – 7/7/11
EOL Criteria	This printer has Ink Out which stops printing. Whichever came first, either Ink Out or Fade, was used as the EOL criteria.
Print mode used	Continuous
Paper Size	Letter
Media used	Xerox Business 4200, 92 Brightness 20lb. weight
Driver version	Driver version = 03/01/2011,6.2.5.20 The following driver settings were changed from default: Color Test: Paper type = Changed to Plain Paper from Auto Select. Mono Test: Paper type = Changed to Plain Paper from Auto Select. Color printing = Changed to Black and White from Color.

### Declaration of Yield

<p><b>Inkjet Cartridge Yield when tested in Kodak ESP Office 2150:</b></p> <p>Using the test suite defined in ISO/IEC 24712 provides the following results:              Average K (Black) Cartridge Yield – Up to 221 standard pages              Average Color Cartridge Yield – Up to 290 standard pages</p> <p>Using the test page defined in ISO/IEC 19752 provides the following results:              Average K (Black) Cartridge Yield – Up to 360 standard pages              Estimated supplemental Color Cartridge Yield – Up to 2,390 standard pages</p> <p>Values obtained by continuous printing. Declared yield values in accordance with ISO/IEC 24711</p>
--

Using 24712 Test Suite						
Cartridge Identifier	Color	Average (pages)	Standard Deviation (pages)	90% Lower Confidence (pages)	Number used in calculations/test	Primary/ Supplemental
Kodak Black 30	K (Black)	227	9	221	9/15	Primary
Kodak Color 30	Color	292	3	290	9/12	Primary

Using 19752 Test Page						
Cartridge Identifier	Color	Average (pages)	Standard Deviation (pages)	90% Lower Confidence (pages)	Number used in calculations/test	Primary/ Supplemental
Kodak Black 30	K (Black)	360	1	360	18/21	Primary
Kodak Color 30	Color	2,399	6	2,390	3/3	Supplemental

Test results and cost information provided by QualityLogic. Tests were performed under laboratory conditions and end-user's results may vary. Test results, ink cartridge pricing and cost per page pricing subject to change without notice by QualityLogic. All test results and cost information are provided "as-is," "as available," and all warranties, expressed or implied, are hereby disclaimed. Users of the information contained herein assume full responsibility and risk of loss resulting from usage thereof.

<b>Printer Identifier</b>	<b>Kodak ESP Office 2170</b>
Printer Manufacturer	Kodak
Cartridge Identifier	Black 30, Color 30
Cartridge Type	Separate ink supply and print head
Date Tested	8/3/11 – 8/8/11
EOL Criteria	This printer has Ink Out which stops printing. Whichever came first, either Ink Out or Fade, was used as the EOL criteria.
Print mode used	Continuous
Paper Size	Letter
Media used	Xerox Business 4200, 92 Brightness 20lb. weight
Driver version	Driver version = 03/01/2011,6.2.5.20 The following driver settings were changed from default: Color Test: Paper type = Changed to Plain Paper from Auto Select. Mono Test: Paper type = Changed to Plain Paper from Auto Select. Color Printing = Changed to Black and White from Color.

## Declaration of Yield

<p><b>Inkjet Cartridge Yield when tested in Kodak ESP Office 2170:</b></p> <p>Using the test suite defined in ISO/IEC 24712 provides the following results:  Average K (Black) Cartridge Yield – Up to 221 standard pages  Average Color Cartridge Yield – Up to 290 standard pages</p> <p>Using the test page defined in ISO/IEC 19752 provides the following results:  Average K (Black) Cartridge Yield – Up to 356 standard pages  Estimated supplemental Color Cartridge Yield – Up to 2,150 standard pages</p> <p>Values obtained by continuous printing. Declared yield values in accordance with ISO/IEC 24711</p>
--

Using 24712 Test Suite						
Cartridge Identifier	Color	Average (pages)	Standard Deviation (pages)	90% Lower Confidence (pages)	Number used in calculations/test	Primary/ Supplemental
Kodak Black 30	K (Black)	227	9	221	9/15	Primary
Kodak Color 30	Color	292	3	290	9/12	Primary

Using 19752 Test Page						
Cartridge Identifier	Color	Average (pages)	Standard Deviation (pages)	90% Lower Confidence (pages)	Number used in calculations/test	Primary/ Supplemental
Kodak Black 30	K (Black)	358	5	356	18/18	Primary
Kodak Color 30	Color	2,150	-	2,150	3/3	Supplemental

Test results and cost information provided by QualityLogic. Tests were performed under laboratory conditions and end-user's results may vary. Test results, ink cartridge pricing and cost per page pricing subject to change without notice by QualityLogic. All test results and cost information are provided "as-is," "as available," and all warranties, expressed or implied, are hereby disclaimed. Users of the information contained herein assume full responsibility and risk of loss resulting from usage thereof.

<b>Printer Identifier</b>	<b>Kodak ESP Office 2170</b>
Printer Manufacturer	Kodak
Cartridge Identifier	Black 30, Color 30
Cartridge Type	Separate ink supply and print head
Date Tested	8/8/11 – 8/9/11
EOL Criteria	This printer has Ink Out which stops printing. Whichever came first, either Ink Out or Fade, was used as the EOL criteria.
Print mode used	Continuous
Paper Size	4" x 6" borderless photo on 8 1/2" x 11" photo paper
Media used	Kodak Ultra Premium Photo Paper, High Gloss
Driver version	Driver version = 03/01/2011,6.2.5.20 The following driver settings were changed from default: Paper type = Changed to KODAK ULTRA Premium Photo - High Gloss from Auto Select.

## Declaration of Yield

<p><b>Inkjet Cartridge Yield when tested in Kodak ESP Office 2170:</b></p> <p>Using the QualityLogic Color Photo test suite provides the following results:  Average Color Cartridge Yield – Up to 104 standard pages  Estimated supplemental K (Black) Cartridge Yield – Up to 743 standard pages</p> <p>Values obtained by continuous printing. Declared yield values in accordance with QualityLogic Color Photo Yield Test Methodology</p>
--

Cartridge Identifier	Color	Average (pages)	Standard Deviation (pages)	90% Lower Confidence (pages)	Number used in calculations/test	Primary/ Supplemental
Kodak Color 30	Color	105	2	104	9/9	Primary
Kodak Black 30	K (Black)	926	109	743	3/3	Supplemental

Test results and cost information provided by QualityLogic. Tests were performed under laboratory conditions and end-user's results may vary. Test results, ink cartridge pricing and cost per page pricing subject to change without notice by QualityLogic. All test results and cost information are provided "as-is," "as available," and all warranties, expressed or implied, are hereby disclaimed. Users of the information contained herein assume full responsibility and risk of loss resulting from usage thereof.

<b>Printer Identifier</b>	<b>Kodak ESP 5250</b>
Printer Manufacturer	Kodak
Cartridge Identifier	Black Ink Cartridge 10B & Color Ink Cartridge 10C
Cartridge Type	Separate ink supply and print head
Date Tested	2/11/2011 – 3/15/2011
EOL Criteria	This printer has Ink Out which stops printing. Whichever came first, either Ink Out or Fade, was used as the EOL criteria.
Print mode used	Continuous
Paper Size	Letter
Media used	Xerox Business 4200, 92 Brightness 20lb. weight
Driver version	DriverVer=09/02/2010,5.4.6.3 The following driver settings were changed from default: Color Ink Test: Paper type = Changed to Plain Paper from Auto Select. Mono Test Settings: Paper type = Changed to Plain Paper from Auto Select. Color Printing = Changed to Black and White from Color.

## Declaration of Yield

<p><b>Inkjet Cartridge Yield when tested in Kodak ESP 5250:</b></p> <p>Using the test suite defined in ISO/IEC 24712 provides the following results:  Average K (Black) Cartridge Yield – Up to 285 standard pages  Average Color Cartridge Yield – Up to 427 standard pages</p> <p>Using the test page defined in ISO/IEC 19752 provides the following results:  Average K (Black) Cartridge Yield – Up to 440 standard pages  Estimated supplemental Color Cartridge Yield – Up to 3,514 standard pages</p> <p>Values obtained by continuous printing. Declared yield values in accordance with ISO/IEC 24711</p>
---

Using 24712 Test Suite						
Cartridge Identifier	Color	Average (pages)	Standard Deviation (pages)	90% Lower Confidence (pages)	Number used in calculations/test	Primary/ Supplemental
10B	K (Black)	286	2	285	12/15	Primary
10C	Color	428	3	427	9/9	Primary

Using 19752 Test Page						
Cartridge Identifier	Color	Average (pages)	Standard Deviation (pages)	90% Lower Confidence (pages)	Number used in calculations/test	Primary/ Supplemental
10B	K (Black)	441	2	440	24/24	Primary
10C	Color	3,526	7	3,514	3/3	Supplemental

<b>Printer Identifier</b>	<b>Kodak ESP 5250</b>
Printer Manufacturer	Kodak
Cartridge Identifier	Black Ink Cartridge 10B & Color Ink Cartridge 10C
Cartridge Type	Separate ink supply and print head
Date Tested	3/16/2011 – 3/17/2011
EOL Criteria	This printer has Ink Out which stops printing. Whichever came first, either Ink Out or Fade, was used as the EOL criteria.
Print mode used	Continuous
Paper Size	4" x 6" borderless photo on 8 1/2" x 11" photo paper
Media used	Kodak Ultra Premium Photo Paper, High Gloss
Driver version	DriverVer=09/02/2010,5.4.6.3 The following driver settings were changed from default: Paper type = Changed to KODAK ULTRA Premium Photo- High Gloss from Plain Paper.

## Declaration of Yield

<p><b>Inkjet Cartridge Yield when tested in Kodak ESP 5250:</b></p> <p>Using the QualityLogic Color Photo test suite provides the following results:  Average Color Cartridge Yield – Up to 179 standard pages  Estimated Supplemental K (Black) Cartridge Yield – Up to 1,197 standard pages</p> <p>Values obtained by continuous printing. Declared yield values in accordance with QualityLogic Color Photo Yield Test Methodology</p>
---

Cartridge Identifier	Color	Average (pages)	Standard Deviation (pages)	90% Lower Confidence (pages)	Number used in calculations/test	Primary/ Supplemental
10C	Color	179	1	179	9/9	Primary
10B	K (Black)	1,274	46	1,197	3/3	Supplemental

<b>Printer Identifier</b>	<b>Kodak ESP 6150</b>
Printer Manufacturer	Kodak
Cartridge Identifier	Black Ink Cartridge 10B & Color Ink Cartridge 10C
Cartridge Type	Separate ink supply and print head
Date Tested	5/4/2010 – 5/19/2010
EOL Criteria	This printer has Ink Out which stops printing. Whichever came first, either Ink Out or Fade, was used as the EOL criteria.
Print mode used	Continuous
Paper Size	Letter
Media used	Xerox Business 4200, 92 Brightness 20lb. weight
Driver version	Driver Version = 5.1.6.0 The following driver settings were changed from default: Color Ink Test: Paper type = Changed to Plain Paper from Auto Select Mono Ink Test: Paper type = Changed to Plain Paper from Auto Select Color printing = Changed to Black and White from Color

## Declaration of Yield

<p><b>Inkjet Cartridge Yield when tested in Kodak ESP Office 6150:</b></p> <p>Using the test suite defined in ISO/IEC 24712 provides the following results:  Average K (Black) Cartridge Yield – Up to 283 standard pages  Average Color Cartridge Yield – Up to 424 standard pages</p> <p>Using the test page defined in ISO/IEC 19752 provides the following results:  Average K (Black) Cartridge Yield – Up to 440 standard pages  Estimated supplemental Color Cartridge Yield – Up to 3,511 standard pages</p> <p>Values obtained by continuous printing. Declared yield values in accordance with ISO/IEC 24711</p>
--

Using 24712 Test Suite						
Cartridge Identifier	Color	Average (pages)	Standard Deviation (pages)	90% Lower Confidence (pages)	Number used in calculations/test	Primary/ Supplemental
10B	K (Black)	285	3	283	12/17	Primary
10C	Color	427	4	424	9/11	Primary

Using 19752 Test Page						
Cartridge Identifier	Color	Average (pages)	Standard Deviation (pages)	90% Lower Confidence (pages)	Number used in calculations/test	Primary/ Supplemental
10B	K (Black)	441	2	440	24/24	Primary
10C	Color	3,526	9	3,511	3/3	Supplemental

<b>Printer Identifier</b>	<b>Kodak ESP 6150</b>
Printer Manufacturer	Kodak
Cartridge Identifier	Black Ink Cartridge 10B & Color Ink Cartridge 10C
Cartridge Type	Separate ink supply and print head
Date Tested	5/21/2010 – 5/24/2010
EOL Criteria	This printer has Ink Out which stops printing. Whichever came first, either Ink Out or Fade, was used as the EOL criteria.
Print mode used	Continuous
Paper Size	4" x 6" borderless photo on 8 ½" x 11" photo paper
Media used	Kodak Ultra Premium Photo Paper, High Gloss
Driver version	Driver Version = 5.1.6.0 The following driver settings were changed from default: Paper type = Changed to KODAK ULTRA Premium Photo – High Gloss from Auto Select

## Declaration of Yield

<p><b>Inkjet Cartridge Yield when tested in Kodak ESP 6150:</b></p> <p>Using the QualityLogic Color Photo test suite provides the following results:  Average Color Cartridge Yield – Up to 173 standard pages  Estimated supplemental K (Black) Cartridge Yield – Up to 1,275 standard pages</p> <p>Values obtained by continuous printing. Declared yield values in accordance with QualityLogic Color Photo Yield Test Methodology</p>
---

Cartridge Identifier	Color	Average (pages)	Standard Deviation (pages)	90% Lower Confidence (pages)	Number used in calculations/test	Primary/ Supplemental
10C	Color	176	5	173	9/9	Primary
10B	K (Black)	1,310	21	1,275	3/3	Supplemental

<b>Printer Identifier</b>	<b>Kodak ESP 7250</b>
Printer Manufacturer	Kodak
Cartridge Identifier	Black Ink Cartridge 10B & Color Ink Cartridge 10C
Cartridge Type	Separate ink supply and print head
Date Tested	4/1/2010 – 4/13/2010
EOL Criteria	This printer has Ink Out which stops printing. Whichever came first, either Ink Out or Fade, was used as the EOL criteria.
Print mode used	Continuous
Paper Size	Letter
Media used	Xerox Business 4200, 92 Brightness 20lb. weight
Driver version	Driver Version = 5.1.6.0 The following driver settings were changed from default: Color Ink Test: Paper type = Changed to Plain Paper from Auto Select Mono Ink Test: Paper type = Changed to Plain Paper from Auto Select Color Printing = Changed to Black and White from Color

## Declaration of Yield

<p><b>Inkjet Cartridge Yield when tested in Kodak ESP 7250:</b></p> <p>Using the test suite defined in ISO/IEC 24712 provides the following results:  Average K (Black) Cartridge Yield – Up to 284 standard pages  Average Color Cartridge Yield – Up to 426 standard pages</p> <p>Using the test page defined in ISO/IEC 19752 provides the following results:  Average K (Black) Cartridge Yield – Up to 444 standard pages  Estimated supplemental Color Cartridge Yield – Up to 3,546 standard pages</p> <p>Values obtained by continuous printing. Declared yield values in accordance with ISO/IEC 24711</p>
---

Using 24712 Test Suite						
Cartridge Identifier	Color	Average (pages)	Standard Deviation (pages)	90% Lower Confidence (pages)	Number used in calculations/test	Primary/ Supplemental
10B	K (Black)	285	1	284	12/18	Primary
10C	Color	428	3	426	9/12	Primary

Using 19752 Test Page						
Cartridge Identifier	Color	Average (pages)	Standard Deviation (pages)	90% Lower Confidence (pages)	Number used in calculations/test	Primary/ Supplemental
10B	K (Black)	445	2	444	24/24	Primary
10C	Color	3,556	6	3,546	3/3	Supplemental

<b>Printer Identifier</b>	<b>Kodak ESP 7250</b>
Printer Manufacturer	Kodak
Cartridge Identifier	Black Ink Cartridge 10B & Color Ink Cartridge 10C
Cartridge Type	Separate ink supply and print head
Date Tested	4/5/2010 – 4/6/2010
EOL Criteria	This printer has Ink Out which stops printing. Whichever came first, either Ink Out or Fade, was used as the EOL criteria.
Print mode used	Continuous
Paper Size	4" x 6" borderless photo on 8 ½" x 11" photo paper
Media used	Kodak Ultra Premium Photo Paper, High Gloss
Driver version	Driver Version = 5.1.6.0 The following driver settings were changed from default: Paper type = Changed to KODAK ULTRA Premium Photo – High Gloss from Auto Select

## Declaration of Yield

<p><b>Inkjet Cartridge Yield when tested in Kodak ESP 7250:</b></p> <p>Using the QualityLogic Color Photo test suite provides the following results:  Average Color Cartridge Yield – Up to 179 standard pages  Estimated supplemental K (Black) Cartridge Yield – Up to 1,205 standard pages</p> <p>Values obtained by continuous printing. Declared yield values in accordance with QualityLogic Color Photo Yield Test Methodology</p>
---

Cartridge Identifier	Color	Average (pages)	Standard Deviation (pages)	90% Lower Confidence (pages)	Number used in calculations/test	Primary/ Supplemental
10C	Color	180	1	179	9/9	Primary
10B	K (Black)	1,256	31	1,205	3/3	Supplemental

<b>Printer Identifier</b>	<b>Kodak ESP 9250</b>
Printer Manufacturer	Kodak
Cartridge Identifier	Black Ink Cartridge 10B & Color Ink Cartridge 10C
Cartridge Type	Separate ink supply and print head
Date Tested	11/17/2010 – 11/22/2010; 2/17/2011 – 2/18/2011
EOL Criteria	This printer has Ink Out which stops printing. Whichever came first, either Ink Out or Fade, was used as the EOL criteria.
Print mode used	Continuous
Paper Size	Letter
Media used	Xerox Business 4200, 92 Brightness 20lb. weight
Driver version	Driver version = 09/02/2010,5.4.6.3 The following driver settings were changed from default: Color Test: Paper type = Changed to Plain Paper from Auto Select. Mono Test: Paper type = Changed to Plain Paper from Auto Select. Color Printing = Changed to Black and White from Color.

## Declaration of Yield

<p><b>Inkjet Cartridge Yield when tested in Kodak ESP 9250:</b></p> <p>Using the test suite defined in ISO/IEC 24712 provides the following results:  Average K (Black) Cartridge Yield – Up to 283 standard pages  Average Color Cartridge Yield – Up to 425 standard pages</p> <p>Using the test page defined in ISO/IEC 19752 provides the following results:  Average K (Black) Cartridge Yield – Up to 439 standard pages  Estimated supplemental Color Cartridge Yield – Up to 2,338 standard pages</p> <p>Values obtained by continuous printing. Declared yield values in accordance with ISO/IEC 24711</p>
---

Using 24712 Test Suite						
Cartridge Identifier	Color	Average (pages)	Standard Deviation (pages)	90% Lower Confidence (pages)	Number used in calculations/test	Primary/ Supplemental
10B	K (Black)	284	2	283	12/15	Primary
10C	Color	427	3	425	9/9	Primary

Using 19752 Test Page						
Cartridge Identifier	Color	Average (pages)	Standard Deviation (pages)	90% Lower Confidence (pages)	Number used in calculations/test	Primary/ Supplemental
10B	K (Black)	440	2	439	15/18	Primary
10C	Color	2,450	66	2,338	3/3	Supplemental

Test results and cost information provided by QualityLogic. Tests were performed under laboratory conditions and end-user's results may vary. Test results, ink cartridge pricing and cost per page pricing subject to change without notice by QualityLogic. All test results and cost information are provided "as-is," "as available," and all warranties, expressed or implied, are hereby disclaimed. Users of the information contained herein assume full responsibility and risk of loss resulting from usage thereof.

<b>Printer Identifier</b>	<b>Kodak ESP 9250</b>
Printer Manufacturer	Kodak
Cartridge Identifier	Black Ink Cartridge 10B & Color Ink Cartridge 10C
Cartridge Type	Separate ink supply and print head
Date Tested	11/22/2010 – 11/24/2010
EOL Criteria	This printer has Ink Out which stops printing. Whichever came first, either Ink Out or Fade, was used as the EOL criteria.
Print mode used	Continuous
Paper Size	4" x 6" borderless photo on 8 1/2" x 11" photo paper
Media used	Kodak Ultra Premium Photo Paper, High Gloss
Driver version	Driver version = 09/02/2010,5.4.6.3 The following driver settings were changed from default: Paper type = Changed to KODAK ULTRA Premium Photo – High Gloss from Auto Select

## Declaration of Yield

<p><b>Inkjet Cartridge Yield when tested in Kodak ESP 9250:</b></p> <p>Using the QualityLogic Color Photo test suite provides the following results:  Average Color Cartridge Yield – Up to 176 standard pages  Estimated supplemental K (Black) Cartridge Yield – Up to 1,117 standard pages</p> <p>Values obtained by continuous printing. Declared yield values in accordance with QualityLogic Color Photo Yield Test Methodology</p>
---

Cartridge Identifier	Color	Average (pages)	Standard Deviation (pages)	90% Lower Confidence (pages)	Number used in calculations/test	Primary/ Supplemental
10C	Color	177	2	176	9/12	Primary
10B	K (Black)	1,152	21	1,117	3/6	Supplemental

<b>Printer Identifier</b>	<b>Kodak ESP C310</b>
Printer Manufacturer	Kodak
Cartridge Identifier	30 Black, 30 Color
Cartridge Type	Separate ink supply and print head
Date Tested	3/29/2011 – 4/1/2011
EOL Criteria	This printer has Ink Out which stops printing. Whichever came first, either Ink Out or Fade, was used as the EOL criteria.
Print mode used	Continuous
Paper Size	Letter
Media used	Xerox Business 4200, 92 Brightness 20lb. weight
Driver version	Driver Version = 03/01/2011,6.2.5.20 The following driver settings were changed from default: Color Test: Paper type = Changed to Plain Paper from Auto Select. Mono Test: Paper type = Changed to Plain Paper from Auto Select. Color printing = Changed to Black and White from Color.

## Declaration of Yield

<p><b>Inkjet Cartridge Yield when tested in Kodak ESP C310:</b></p> <p>Using the test suite defined in ISO/IEC 24712 provides the following results:  Average K (Black) Cartridge Yield – Up to 222 standard pages  Average Color Cartridge Yield – Up to 292 standard pages</p> <p>Using the test page defined in ISO/IEC 19752 provides the following results:  Average K (Black) Cartridge Yield – Up to 344 standard pages  Estimated supplemental Color Cartridge Yield – Up to 1,725 standard pages</p> <p>Values obtained by continuous printing. Declared yield values in accordance with ISO/IEC 24711</p>
---

Using 24712 Test Suite						
Cartridge Identifier	Color	Average (pages)	Standard Deviation (pages)	90% Lower Confidence (pages)	Number used in calculations/test	Primary/ Supplemental
Kodak Black 30	K (Black)	227	8	222	9/15	Primary
Kodak Color 30	Color	293	3	292	9/12	Primary

Using 19752 Test Page						
Cartridge Identifier	Color	Average (pages)	Standard Deviation (pages)	90% Lower Confidence (pages)	Number used in calculations/test	Primary/ Supplemental
Kodak Black 30	K (Black)	353	19	344	16/19	Primary
Kodak Color 30	Color	2,119	233	1,725	3/3	Supplemental

<b>Printer Identifier</b>	<b>Kodak ESP C310</b>
Printer Manufacturer	Kodak
Cartridge Identifier	30 Black, 30 Color
Cartridge Type	Separate ink supply and print head
Date Tested	4/4/2011 – 4/4/2011
EOL Criteria	This printer has Ink Out which stops printing. Whichever came first, either Ink Out or Fade, was used as the EOL criteria.
Print mode used	Continuous
Paper Size	4" x 6" borderless photo on 8 ½" x 11" photo paper
Media used	Kodak Ultra Premium Photo Paper, High Gloss
Driver version	Driver Version = 03/01/2011,6.2.5.20 The following driver settings were changed from default: Paper type = Changed to KODAK ULTRA Premium Photo- High Gloss

## Declaration of Yield

<p><b>Inkjet Cartridge Yield when tested in Kodak ESP C310:</b></p> <p>Using the QualityLogic Color Photo test suite provides the following results:  Average Color Cartridge Yield – Up to 104 standard pages  Estimated supplemental K (Black) Cartridge Yield – Up to 795 standard pages</p> <p>Values obtained by continuous printing. Declared yield values in accordance with QualityLogic Color Photo Yield Test Methodology</p>
---

Cartridge Identifier	Color	Average (pages)	Standard Deviation (pages)	90% Lower Confidence (pages)	Number used in calculations/test	Primary/ Supplemental
Kodak Color 30	Color	104	-	104	9/9	Primary
Kodak Black 30	K (Black)	842	27	795	3/3	Supplemental

<b>Printer Identifier</b>	<b>Kodak ESP C315</b>
Printer Manufacturer	Kodak
Cartridge Identifier	30 Black, 30 Color
Cartridge Type	Separate ink supply and print head
Date Tested	7/19/11 – 7/25/11
EOL Criteria	This printer has Ink Out which stops printing. Whichever came first, either Ink Out or Fade, was used as the EOL criteria.
Print mode used	Continuous
Paper Size	A4
Media used	Hammermill Fore Multi-Purpose, 96 Brightness 20lb. weight
Driver version	Driver version = 03/01/2011,6.2.5.20 The following driver settings were changed from default: Color Test: Paper type = Changed to Plain Paper from Auto Select. Paper size = Changed to A4 from Letter. Mono Test: Paper type = Changed to Plain Paper from Auto Select. Paper size = Changed to A4 from Letter. Color printing = Changed to Black and White from Color.

## Declaration of Yield

### Inkjet Cartridge Yield when tested in Kodak ESP C315:

Using the test suite defined in ISO/IEC 24712 provides the following results:

Average K (Black) Cartridge Yield – Up to 221 standard pages

Average Color Cartridge Yield – Up to 290 standard pages

Using the test page defined in ISO/IEC 19752 provides the following results:

Average K (Black) Cartridge Yield – Up to 358 standard pages

Estimated supplemental Color Cartridge Yield – Up to 2,243 standard pages

Values obtained by continuous printing. Declared yield values in accordance with ISO/IEC 24711

#### Using 24712 Test Suite

Cartridge Identifier	Color	Average (pages)	Standard Deviation (pages)	90% Lower Confidence (pages)	Number used in calculations/test	Primary/ Supplemental
Kodak Black 30	K (Black)	227	9	221	9/15	Primary
Kodak Color 30	Color	292	3	290	9/12	Primary

#### Using 19752 Test Page

Cartridge Identifier	Color	Average (pages)	Standard Deviation (pages)	90% Lower Confidence (pages)	Number used in calculations/test	Primary/ Supplemental
Kodak Black 30	K (Black)	359	3	358	18/21	Primary
Kodak Color 30	Color	2,276	20	2,243	3/3	Supplemental

<b>Printer Identifier</b>	<b>Brother MFC-J410W</b>
Printer Manufacturer	Brother
Cartridge Identifier	LC61BK, LC61C, LC61M, LC61Y
Cartridge Type	Separate ink supply and print head
Date Tested	4/14/2011 – 4/20/2011
EOL Criteria	This printer has Ink Out which stops printing. Whichever came first, either Ink Out or Fade, was used as the EOL criteria.
Print mode used	Continuous
Paper Size	Letter
Media used	Xerox Business 4200, 92 Brightness 20lb. weight
Driver version	Driver Version = Brother MFC-J410W Printer Version 5.02

## Declaration of Yield

### Inkjet Cartridge Yield when tested in Brother MFC-J410W:

Using the test suite defined in ISO/IEC 24712 provides the following results:

- Average K (Black) Cartridge Yield – Up to 532 standard pages
- Average Cyan Cartridge Yield – Up to 437 standard pages
- Average Magenta Cartridge Yield – Up to 375 standard pages
- Average Yellow Cartridge Yield – Up to 294 standard pages

Using the test page defined in ISO/IEC 19752 provides the following results:

- Average K (Black) Cartridge Yield – Up to 564 standard pages
- Estimated supplemental Cyan Cartridge Yield – Up to 9,773 standard pages
- Estimated supplemental Magenta Cartridge Yield – Up to 14,357 standard pages
- Estimated supplemental Yellow Cartridge Yield – Up to 12,024 standard pages

Values obtained by continuous printing. Declared yield values in accordance with ISO/IEC 24711

Using 24712 Test Suite						
Cartridge Identifier	Color	Average (pages)	Standard Deviation (pages)	90% Lower Confidence (pages)	Number used in calculations/test	Primary/ Supplemental
LC61BK	K (Black)	549	28	532	9/12	Primary
LC61C	Cyan	454	28	437	9/15	Primary
LC61M	Magenta	387	23	375	12/18	Primary
LC61Y	Yellow	302	18	294	15/21	Primary

Using 19752 Test Page						
Cartridge Identifier	Color	Average (pages)	Standard Deviation (pages)	90% Lower Confidence (pages)	Number used in calculations/test	Primary/ Supplemental
LC61BK	K (Black)	581	27	564	9/9	Primary
LC61C	Cyan	10,129	211	9,773	3/3	Supplemental
LC61M	Magenta	19,556	3,084	14,357	3/3	Supplemental
LC61Y	Yellow	12,273	148	12,024	3/3	Supplemental

<b>Printer Identifier</b>	<b>Brother MFC-J410W</b>
Printer Manufacturer	Brother
Cartridge Identifier	LC61BK, LC61C, LC61M, LC61Y
Cartridge Type	Separate ink supply and print head
Date Tested	4/20/2011 – 4/22/2011
EOL Criteria	This printer has Ink Out which stops printing. Whichever came first, either Ink Out or Fade, was used as the EOL criteria.
Print mode used	Continuous
Paper Size	4" x 6" borderless photo on 8 ½" x 11" photo paper
Media used	Brother Premium Glossy Photo Paper (BP61GLL)
Driver version	Driver Version = Brother MFC-J410W Printer Version 5.02 The following driver settings were changed from default: Media Type = Changed to Brother BP61 Photo Paper from Plain Paper. Quality = Changed to Photo from Normal.

## Declaration of Yield

<p><b>Inkjet Cartridge Yield when tested in Brother MFC-J410W:</b></p> <p>Using the QualityLogic Color Photo test suite provides the following results:  Average Cyan Cartridge Yield – Up to 81 standard pages  Average Magenta Cartridge Yield – Up to 105 standard pages  Average Yellow Cartridge Yield – Up to 86 standard pages  Estimated supplemental K (Black) Cartridge Yield – Up to 8,727 standard pages</p> <p>Values obtained by continuous printing. Declared yield values in accordance with QualityLogic Color Photo Yield Test Methodology</p>
--

Cartridge Identifier	Color	Average (pages)	Standard Deviation (pages)	90% Lower Confidence (pages)	Number used in calculations/test	Primary/ Supplemental
LC61C	Cyan	84	6	81	10/13	Primary
LC61M	Magenta	111	10	105	9/9	Primary
LC61Y	Yellow	90	5	86	9/12	Primary
LC61BK	K (Black)	38,999	17,956	8,727	3/3	Supplemental

<b>Printer Identifier</b>	<b>Canon Pixma MG5120</b>
Printer Manufacturer	Canon
Cartridge Identifier	PGI-225PGBK, CLI-226C, CLI-226M, CLI-226Y, CLI-226BK
Cartridge Type	Separate ink supply and print head
Date Tested	11/12/2010 – 11/18/2010
EOL Criteria	This printer has Ink Out which stops printing. Whichever came first, either Ink Out or Fade, was used as the EOL criteria.
Print mode used	Continuous
Paper Size	Letter
Media used	Xerox Business 4200, 92 Brightness 20lb. weight
Driver version	Driver Version = Canon Inkjet Printer Driver Version 2.41

## Declaration of Yield

<p><b>Inkjet Cartridge Yield when tested in Canon Pixma MG5120:</b></p> <p>Using the test suite defined in ISO/IEC 24712 provides the following results:  Average K (Black) Cartridge Yield – Up to 324 standard pages  Average Cyan Cartridge Yield – Up to 552 standard pages  Average Magenta Cartridge Yield – Up to 518 standard pages  Average Yellow Cartridge Yield – Up to 538 standard pages  Estimated supplemental K (Photo Black) Cartridge Yield – Up to 4,574 standard pages</p> <p>Using the test page defined in ISO/IEC 19752 provides the following results:  Average K (Black) Cartridge Yield – Up to 340 standard pages  Estimated supplemental Cyan Cartridge Yield – Up to 3,387 standard pages  Estimated supplemental Magenta Cartridge Yield – Up to 3,803 standard pages  Estimated supplemental Yellow Cartridge Yield – Up to 5,115 standard pages  Estimated supplemental K (Photo Black) Cartridge Yield – Up to 7,775 standard pages</p> <p>Values obtained by continuous printing. Declared yield values in accordance with ISO/IEC 24711</p>
---

Using 24712 Test Suite						
Cartridge Identifier	Color	Average (pages)	Standard Deviation (pages)	90% Lower Confidence (pages)	Number used in calculations/test	Primary/ Supplemental
PGI-225PGBK	K (Black)	331	14	324	15/20	Primary
CLI-226C	Cyan	566	22	552	9/12	Primary
CLI-226M	Magenta	533	24	518	9/15	Primary
CLI-226Y	Yellow	548	17	538	9/15	Primary
CLI-226BK	K (Photo Black)	4,993	249	4,574	3/6	Supplemental

Using 19752 Test Page						
Cartridge Identifier	Color	Average (pages)	Standard Deviation (pages)	90% Lower Confidence (pages)	Number used in calculations/test	Primary/ Supplemental
PGI-225PGBK	K (Black)	350	17	340	9/9	Primary
CLI-226C	Cyan	3,528	84	3,387	3/3	Supplemental
CLI-226M	Magenta	3,894	54	3,803	3/3	Supplemental
CLI-226Y	Yellow	5,273	93	5,115	3/3	Supplemental
CLI-226BK	K (Photo Black)	8,367	351	7,775	3/3	Supplemental

Test results and cost information provided by QualityLogic. Tests were performed under laboratory conditions and end-user's results may vary. Test results, ink cartridge pricing and cost per page pricing subject to change without notice by QualityLogic. All test results and cost information are provided "as-is," "as available," and all warranties, expressed or implied, are hereby disclaimed. Users of the information contained herein assume full responsibility and risk of loss resulting from usage thereof.

<b>Printer Identifier</b>	<b>Canon Pixma MG5120</b>
Printer Manufacturer	Canon
Cartridge Identifier	PGI-225PGBK, CLI-226C, CLI-226M, CLI-226Y, CLI-226BK
Cartridge Type	Separate ink supply and print head
Date Tested	11/18/2010 – 11/23/2010
EOL Criteria	This printer has Ink Out which stops printing. Whichever came first, either Ink Out or Fade, was used as the EOL criteria.
Print mode used	Continuous
Paper Size	4" x 6" borderless photo on 8 1/2" x 11" photo paper
Media used	Canon Photo Paper Plus Glossy II (PP-201)
Driver version	Driver Version = Canon Inkjet Printer Driver Version 2.41 The following driver settings were changed from default: Media Type = Changed to Photo Paper Plus Glossy II from Plain Paper Paper Source = Changed to Rear Tray from Automatically Select Print Quality = Changed to High from Standard

## Declaration of Yield

<p><b>Inkjet Cartridge Yield when tested in Canon Pixma MG5120:</b></p> <p>Using the QualityLogic Color Photo test suite provides the following results:</p> <ul style="list-style-type: none"> <li>Average Cyan Cartridge Yield – Up to 176 standard pages</li> <li>Average Magenta Cartridge Yield – Up to 189 standard pages</li> <li>Average Yellow Cartridge Yield – Up to 192 standard pages</li> <li>Estimated supplemental K (Photo Black) Cartridge Yield – Up to 546 standard pages</li> <li>Estimated supplemental K (Black) Cartridge Yield – Up to 929 standard pages</li> </ul> <p>Values obtained by continuous printing. Declared yield values in accordance with QualityLogic Color Photo Yield Test Methodology</p>
---

Cartridge Identifier	Color	Average (pages)	Standard Deviation (pages)	90% Lower Confidence (pages)	Number used in calculations/test	Primary/ Supplemental
CLI-226C	Cyan	181	8	176	9/12	Primary
CLI-226M	Magenta	192	5	189	9/11	Primary
CLI-226Y	Yellow	195	4	192	9/10	Primary
CLI-226BK	K (Photo Black)	577	19	546	3/5	Supplemental
PGI-225PGBK	K (Black)	978	29	929	3/3	Supplemental

<b>Printer Identifier</b>	<b>Canon Pixma MG6120</b>
Printer Manufacturer	Canon
Cartridge Identifier	PGI-225PGBK, CLI-226C, CLI-226M, CLI-226Y, CLI-226BK, CLI-226GY
Cartridge Type	Separate ink supply and print head
Date Tested	4/13/2011 – 4/19/2011
EOL Criteria	This printer has Ink Out which stops printing. Whichever came first, either Ink Out or Fade, was used as the EOL criteria.
Print mode used	Continuous
Paper Size	Letter
Media used	Xerox Business 4200, 92 Brightness 20lb. weight
Driver version	Driver Version = Canon Inkjet Printer Driver Version 2.41

## Declaration of Yield

### Inkjet Cartridge Yield when tested in Canon Pixma MG6120:

Using the test suite defined in ISO/IEC 24712 provides the following results:

- Average K (Black) Cartridge Yield – Up to 338 standard pages
- Average Cyan Cartridge Yield – Up to 550 standard pages
- Average Magenta Cartridge Yield – Up to 543 standard pages
- Average Yellow Cartridge Yield – Up to 530 standard pages
- Estimated supplemental K (Photo Black) Cartridge Yield – Up to 4,172 standard pages
- Estimated supplemental Gray Cartridge Yield – Up to 2,797 standard pages

Using the test page defined in ISO/IEC 19752 provides the following results:

- Average K (Black) Cartridge Yield – Up to 355 standard pages
- Estimated supplemental Cyan Cartridge Yield – Up to 3,246 standard pages
- Estimated supplemental Magenta Cartridge Yield – Up to 3,627 standard pages
- Estimated supplemental Yellow Cartridge Yield – Up to 4,349 standard pages
- Estimated supplemental K (Photo Black) Cartridge Yield – Up to 7,042 standard pages
- Estimated supplemental Gray Cartridge Yield – Up to 4,423 standard pages

Values obtained by continuous printing. Declared yield values in accordance with ISO/IEC 24711

Using 24712 Test Suite						
Cartridge Identifier	Color	Average (pages)	Standard Deviation (pages)	90% Lower Confidence (pages)	Number used in calculations/test	Primary/ Supplemental
PGI-225PGBK	K (Black)	343	11	338	14/18	Primary
CLI-226C	Cyan	565	24	550	9/12	Primary
CLI-226M	Magenta	556	21	543	9/15	Primary
CLI-226Y	Yellow	542	19	530	9/15	Primary
CLI-226BK	K (Photo Black)	5,749	936	4,172	3/6	Supplemental
CLI-226GY	Gray	3,546	444	2,797	3/6	Supplemental

Using 19752 Test Page						
Cartridge Identifier	Color	Average (pages)	Standard Deviation (pages)	90% Lower Confidence (pages)	Number used in calculations/test	Primary/ Supplemental
PGI-225PGBK	K (Black)	364	15	355	9/9	Primary
CLI-226C	Cyan	3,276	18	3,246	3/3	Supplemental
CLI-226M	Magenta	3,680	32	3,627	3/3	Supplemental
CLI-226Y	Yellow	4,569	131	4,349	3/3	Supplemental
CLI-226BK	K (Photo Black)	7,215	103	7,042	3/3	Supplemental
CLI-226GY	Gray	4,664	143	4,423	3/3	Supplemental

Test results and cost information provided by QualityLogic. Tests were performed under laboratory conditions and end-user's results may vary. Test results, ink cartridge pricing and cost per page pricing subject to change without notice by QualityLogic. All test results and cost information are provided "as-is," "as available," and all warranties, expressed or implied, are hereby disclaimed. Users of the information contained herein assume full responsibility and risk of loss resulting from usage thereof.

<b>Printer Identifier</b>	<b>Canon Pixma MG6120</b>
Printer Manufacturer	Canon
Cartridge Identifier	PGI-225PGBK, CLI-226C, CLI-226M, CLI-226Y, CLI-226BK, CLI-226GY
Cartridge Type	Separate ink supply and print head
Date Tested	4/19/2011 – 4/25/2011
EOL Criteria	This printer has Ink Out which stops printing. Whichever came first, either Ink Out or Fade, was used as the EOL criteria.
Print mode used	Continuous
Paper Size	4" x 6" borderless photo on 8 1/2" x 11" photo paper
Media used	Canon Photo Paper Plus Glossy II (PP-201).
Driver version	Driver Version = Canon Inkjet Printer Driver Version 2.41 The following driver settings were changed from default: Media Type = Changed to Photo Paper Plus Glossy II from Plain Paper. Print Quality = Changed to High from Standard. Paper Source = Changed to Rear Tray from Automatically Select.

## Declaration of Yield

<p><b>Inkjet Cartridge Yield when tested in Canon Pixma MG6120:</b></p> <p>Using the QualityLogic Color Photo test suite provides the following results:</p> <ul style="list-style-type: none"> <li>Average Cyan Cartridge Yield – Up to 290 standard pages</li> <li>Average Magenta Cartridge Yield – Up to 337 standard pages</li> <li>Average Yellow Cartridge Yield – Up to 308 standard pages</li> <li>Average Gray Cartridge Yield – Up to 181 standard pages</li> <li>Estimated supplemental K (Photo Black) Cartridge Yield – Up to 645 standard pages</li> <li>Estimated supplemental K (Black) Cartridge Yield – Up to 1,863 standard pages</li> </ul> <p>Values obtained by continuous printing. Declared yield values in accordance with QualityLogic Color Photo Yield Test Methodology</p>
--

Cartridge Identifier	Color	Average (pages)	Standard Deviation (pages)	90% Lower Confidence (pages)	Number used in calculations/test	Primary/ Supplemental
CLI-226C	Cyan	300	16	290	9/12	Primary
CLI-226M	Magenta	349	19	337	9/9	Primary
CLI-226Y	Yellow	318	17	308	9/12	Primary
CLI-226GY	Gray	185	9	181	15/18	Primary
CLI-226BK	K (Photo Black)	652	4	645	3/6	Supplemental
PGI-225PGBK	K (Black)	1,880	10	1,863	3/3	Supplemental

<b>Printer Identifier</b>	<b>Canon PIXMA MP470</b>
Printer Manufacturer	Canon
Cartridge Identifier	PG-40, CL-41
Cartridge Type	Integral ink supply and print head
Date Tested	10/16/07 – 10/18/07
EOL Criteria	Fade was used as the EOL criteria.
Print mode used	Continuous
Paper Size	Letter
Media used	Xerox Business 4200, 92 Brightness 20lb. weight
Driver version	Driver Version = 04/02/2007, 2.10.2.30 The driver default settings were used for testing.

## Declaration of Yield

### Inkjet Cartridge Yield when tested in Canon PIXMA MP470:

Using the test suite defined in ISO/IEC 24712 provides the following results:

- Average K (Black) Cartridge Yield – Up to 346 standard pages
- Average Tri-color Cartridge Yield – Up to 333 standard pages

Using the test page defined in ISO/IEC 19752 provides the following results:

- Average K (Black) Cartridge Yield – Up to 358 standard pages
- Estimated supplemental Tri-color Cartridge Yield – Up to 2,588 standard pages

Values obtained by continuous printing. Declared yield value in accordance with ISO/IEC 24711.

Using 24712 Test Suite						
Cartridge Identifier	Color	Average (pages)	Standard Deviation (pages)	90% Lower Confidence (pages)	Number used in calculations/test	Primary/ Supplemental
PG-40	K (Black)	351	8	346	9/12	Primary
CL-41	Tri-color	339	10	333	9/15	Primary

Using 19752 Test Page						
Cartridge Identifier	Color	Average (pages)	Standard Deviation (pages)	90% Lower Confidence (pages)	Number used in calculations/test	Primary/ Supplemental
PG-40	K (Black)	364	10	358	9/9	Primary
CL-41	Tri-color	2,763	104	2,588	3/3	Supplemental

<b>Printer Identifier</b>	<b>Canon PIXMA MP470</b>
Printer Manufacturer	Canon
Cartridge Identifier	PG-40, CL-41
Cartridge Type	Integral ink supply and print head
Date Tested	10/18/07 – 10/19/07
EOL Criteria	Fade was used as the EOL criteria.
Print mode used	Continuous
Paper Size	4" x 6" borderless photo on 8 1/2" x 11" photo
Media used	Canon Photo Paper Plus Glossy, PP-101
Driver version	Driver Version = 04/02/2007, 2.10.2.30 The following driver settings were changed from default: Media Type = Changed to Photo Paper Plus Glossy from Plain Paper Print Quality = Changed to High from Standard

## Declaration of Yield

### Inkjet Cartridge Yield when tested in Canon PIXMA MP470:

Using the QualityLogic Color Photo test suite provides the following results:

Average Tri-color Cartridge Yield – Up to 113 standard pages

Estimated supplemental K (Black) Cartridge Yield – Up to 1,637 standard pages

Values obtained by continuous printing. Declared yield value in accordance with QualityLogic Color Photo Cartridge Yield Test Methodology.

Cartridge Identifier	Color	Average (pages)	Standard Deviation (pages)	90% Lower Confidence (pages)	Number used in calculations/test	Primary/ Supplemental
CL-41	Tri-color	115	3	113	9/9	Primary
PG-40	K (Black)	1,697	35	1,637	3/3	Supplemental

<b>Printer Identifier</b>	<b>Canon PIXMA MP620</b>
Printer Manufacturer	Canon
Cartridge Identifier	PGI-220BK, CLI-221C, CLI-221M, CLI-221Y, CLI-221BK
Cartridge Type	Separate ink supply and print head
Date Tested	10/8/08 – 10/14/08
EOL Criteria	This printer has Ink Out which stops printing. Whichever came first, either Ink Out or Fade, was used as the EOL criteria.
Print mode used	Continuous
Paper Size	Letter
Media used	Xerox Business 4200, 92 Brightness 20lb. weight
Driver version	Driver Version = 06/12/2008, 2.21.2.20

## Declaration of Yield

### Inkjet Cartridge Yield when tested in Canon PIXMA MP620:

Using the test suite defined in ISO/IEC 24712 provides the following results:

- Average K (Pigment Black) Cartridge Yield – Up to 344 standard pages
- Average Cyan Cartridge Yield – Up to 565 standard pages
- Average Magenta Cartridge Yield – Up to 539 standard pages
- Average Yellow Cartridge Yield – Up to 546 standard pages
- Estimated supplemental K (Black) Cartridge Yield – Up to 5,141 standard pages

Using the test page defined in ISO/IEC 19752 provides the following results:

- Average K (Pigment Black) Cartridge Yield – Up to 366 standard pages
- Estimated supplemental Cyan Cartridge Yield – Up to 3,228 standard pages
- Estimated supplemental Magenta Cartridge Yield – Up to 3,498 standard pages
- Estimated supplemental Yellow Cartridge Yield – Up to 4,551 standard pages
- Estimated supplemental K (Black) Cartridge Yield – Up to 6,866 standard pages

Values obtained by continuous printing. Declared yield values in accordance with ISO/IEC 24711

Using 24712 Test Suite						
Cartridge Identifier	Color	Average (pages)	Standard Deviation (pages)	90% Lower Confidence (pages)	Number used in calculations/test	Primary/ Supplemental
PGI-220BK	K (Pigment Black)	348	7	344	13/19	Primary
CLI-221C	Cyan	583	30	565	9/12	Primary
CLI-221M	Magenta	549	16	539	9/15	Primary
CLI-221Y	Yellow	558	19	546	9/15	Primary
CLI-221BK	K (Black)	5,986	501	5,141	3/6	Supplemental

Using 19752 Test Page						
Cartridge Identifier	Color	Average (pages)	Standard Deviation (pages)	90% Lower Confidence (pages)	Number used in calculations/test	Primary/ Supplemental
PGI-220BK	K (Pigment Black)	374	12	366	9/9	Primary
CLI-221C	Cyan	3,289	36	3,228	3/3	Supplemental
CLI-221M	Magenta	3,597	59	3,498	3/3	Supplemental
CLI-221Y	Yellow	4,726	104	4,551	3/3	Supplemental
CLI-221BK	K (Black)	7,115	148	6,866	3/3	Supplemental

Test results and cost information provided by QualityLogic. Tests were performed under laboratory conditions and end-user's results may vary. Test results, ink cartridge pricing and cost per page pricing subject to change without notice by QualityLogic. All test results and cost information are provided "as-is," "as available," and all warranties, expressed or implied, are hereby disclaimed. Users of the information contained herein assume full responsibility and risk of loss resulting from usage thereof.

<b>Printer Identifier</b>	<b>Canon PIXMA MP620</b>
Printer Manufacturer	Canon
Cartridge Identifier	PGI-220BK, CLI-221C, CLI-221M, CLI-221Y, CLI-221BK
Cartridge Type	Separate ink supply and print head
Date Tested	10/15/08 – 10/17/08
EOL Criteria	This printer has Ink Out which stops printing. Whichever came first, either Ink Out or Fade, was used as the EOL criteria.
Print mode used	Continuous
Paper Size	4" x 6" borderless photo on 8 1/2" x 11" photo paper
Media used	Canon Photo Paper Plus Glossy II, (PP-201)
Driver version	Driver Version = 06/12/2008, 2.21.2.20 The following driver settings were changed from default: Media Type = Changed to Photo Paper Plus Glossy II from Plain Paper Print Quality = Changed to High from Standard

## Declaration of Yield

### Inkjet Cartridge Yield when tested in Canon PIXMA MP620:

Using the QualityLogic Color Photo test suite provides the following results:

Average Cyan Cartridge Yield – Up to 201 standard pages

Average Magenta Cartridge Yield – Up to 217 standard pages

Average Yellow Cartridge Yield – Up to 213 standard pages

Estimated supplemental K (Black) Cartridge Yield – Up to 610 standard pages

Estimated supplemental K (Pigment Black) Cartridge Yield – Up to 1,952 standard pages

Values obtained by continuous printing. Declared yield values in accordance with QualityLogic Color Photo Yield Test Methodology

Cartridge Identifier	Color	Average (pages)	Standard Deviation (pages)	90% Lower Confidence (pages)	Number used in calculations/test	Primary/ Supplemental
CLI-221C	Cyan	204	6	201	9/12	Primary
CLI-221M	Magenta	222	8	217	9/10	Primary
CLI-221Y	Yellow	219	9	213	9/11	Primary
CLI-221BK	K (Black)	658	29	610	3/4	Supplemental
PGI-220BK	K (Pigment Black)	2,015	37	1,952	3/3	Supplemental

<b>Printer Identifier</b>	<b>Canon PIXMA MX330</b>
Printer Manufacturer	Canon
Cartridge Identifier	PG-210, CL-211
Cartridge Type	Integral ink supply and print head
Date Tested	10/15/09 – 10/22/09
EOL Criteria	This printer has Ink Out which stops printing. Whichever came first, either Ink Out or Fade, was used as the EOL criteria.
Print mode used	Continuous
Paper Size	Letter
Media used	Xerox Business 4200, 92 Brightness 20lb. weight
Driver version	Driver Version = 04/25/2009, 2.27.2.10

## Declaration of Yield

### Inkjet Cartridge Yield when tested in Canon PIXMA MX330:

Using the test suite defined in ISO/IEC 24712 provides the following results:

Average K (Black) Cartridge Yield: Up to 288 standard pages

Average Tri-color Cartridge Yield: Up to 265 standard pages

Using the test page defined in ISO/IEC 19752 provides the following results:

Average K (Black) Cartridge Yield: Up to 286 standard pages

Estimated supplemental Tri-color Cartridge Yield: Up to 2,738 standard pages

Values obtained by continuous printing. Declared yield value in accordance with ISO/IEC 24711.

Using 24712 Test Suite						
Cartridge Identifier	Color	Average (pages)	Standard Deviation (pages)	90% Lower Confidence (pages)	Number used in calculations/test	Primary/ Supplemental
PG-210	K (Black)	297	14	288	9/12	Primary
CL-211	Tri-color	268	6	265	9/15	Primary

Using 19752 Test Page						
Cartridge Identifier	Color	Average (pages)	Standard Deviation (pages)	90% Lower Confidence (pages)	Number used in calculations/test	Primary/ Supplemental
PG-210	K (Black)	296	15	286	9/9	Primary
CL-211	Tri-color	2,868	77	2,738	3/3	Supplemental

<b>Printer Identifier</b>	<b>Canon PIXMA MX330</b>
Printer Manufacturer	Canon
Cartridge Identifier	PG-210, CL-211
Cartridge Type	Integral ink supply and print head
Date Tested	10/23/09 – 10/26/09
EOL Criteria	This printer has Ink Out which stops printing. Whichever came first, either Ink Out or Fade, was used as the EOL criteria.
Print mode used	Continuous
Paper Size	4" x 6" borderless photo on 8 1/2" x 11" photo paper
Media used	Canon Photo Paper Plus Glossy II, High Gloss (PP-201).
Driver version	Driver Version = 04/25/2009, 2.27.2.10 The following driver settings were changed from default: Media Type = Changed to Photo Paper Plus Glossy II from Plain Paper Print Quality = Changed to High from Standard

## Declaration of Yield

### Inkjet Cartridge Yield when tested in Canon PIXMA MX330:

Using the QualityLogic Color Photo test suite provides the following results:

Average Tri-color Cartridge Yield: Up to 92 standard pages

Estimated supplemental K (Black) Cartridge Yield: Up to 1,336 standard pages

Values obtained by continuous printing. Declared yield value in accordance with QualityLogic Color Photo Cartridge Yield Test Methodology.

Cartridge Identifier	Color	Average (pages)	Standard Deviation (pages)	90% Lower Confidence (pages)	Number used in calculations/test	Primary/ Supplemental
CL-211	Tri-color	92	1	92	9/9	Primary
PG-210	K (Black)	1,506	101	1,336	3/3	Supplemental

<b>Printer Identifier</b>	<b>Canon PIXMA MX860</b>
Printer Manufacturer	Canon
Cartridge Identifier	PGI-220BK, CLI-221C, CLI-221M, CLI-221Y, CLI-221BK
Cartridge Type	Separate ink supply and print head
Date Tested	10/21/09 – 10/27/09
EOL Criteria	This printer has Ink Out which stops printing. Whichever came first, either Ink Out or Fade, was used as the EOL criteria.
Print mode used	Continuous
Paper Size	Letter
Media used	Xerox Business 4200, 92 Brightness 20lb. weight
Driver version	Driver Version = 05/26/2009, 2.27.2.10

## Declaration of Yield

### Inkjet Cartridge Yield when tested in Canon PIXMA MX860:

Using the test suite defined in ISO/IEC 24712 provides the following results:

- Average K (Black) Cartridge Yield – Up to 329 standard pages
- Average Cyan Cartridge Yield – Up to 564 standard pages
- Average Magenta Cartridge Yield – Up to 522 standard pages
- Average Yellow Cartridge Yield – Up to 553 standard pages
- Estimated supplemental Photo Black Cartridge Yield – Up to 5,054 standard pages

Using the test page defined in ISO/IEC 19752 provides the following results:

- Average K (Black) Cartridge Yield – Up to 360 standard pages
- Estimated supplemental Cyan Cartridge Yield – Up to 3,421 standard pages
- Estimated supplemental Magenta Cartridge Yield – Up to 3,703 standard pages
- Estimated supplemental Yellow Cartridge Yield – Up to 4,984 standard pages
- Estimated supplemental Photo Black Cartridge Yield – Up to 7,966 standard pages

Values obtained by continuous printing. Declared yield value in accordance with ISO/IEC 24711.

Using 24712 Test Suite						
Cartridge Identifier	Color	Average (pages)	Standard Deviation (pages)	90% Lower Confidence (pages)	Number used in calculations/test	Primary/ Supplemental
PGI-220BK	K (Black)	337	16	329	14/20	Primary
CLI-221C	Cyan	577	21	564	9/12	Primary
CLI-221M	Magenta	536	22	522	9/15	Primary
CLI-221Y	Yellow	564	18	553	9/15	Primary
CLI-221BK	Photo Black	5,874	486	5,054	3/6	Supplemental

Using 19752 Test Page						
Cartridge Identifier	Color	Average (pages)	Standard Deviation (pages)	90% Lower Confidence (pages)	Number used in calculations/test	Primary/ Supplemental
PGI-220BK	K (Black)	367	11	360	9/9	Primary
CLI-221C	Cyan	3,748	194	3,421	3/3	Supplemental
CLI-221M	Magenta	4,112	242	3,703	3/3	Supplemental
CLI-221Y	Yellow	5,555	339	4,984	3/3	Supplemental
CLI-221BK	Photo Black	9,144	699	7,966	3/3	Supplemental

<b>Printer Identifier</b>	<b>Canon PIXMA MX860</b>
Printer Manufacturer	Canon
Cartridge Identifier	PGI-220BK, CLI-221C, CLI-221M, CLI-221Y, CLI-221BK
Cartridge Type	Separate ink supply and print head
Date Tested	10/27/09 – 10/30/09
EOL Criteria	This printer has Ink Out which stops printing. Whichever came first, either Ink Out or Fade, was used as the EOL criteria.
Print mode used	Continuous
Paper Size	4" x 6" borderless photo on 8 ½" x 11" photo paper
Media used	Canon Photo Paper Plus Glossy II, High Gloss (PP-201)
Driver version	Driver Version = 05/26/2009, 2.27.2.10 Media Type = Changed to Photo Paper Plus Glossy II from Plain Paper Print Quality = Changed to High from Standard Paper Source = Changed to Rear Tray from Automatically Select

## Declaration of Yield

### Inkjet Cartridge Yield when tested in Canon PIXMA MX860:

Using the QualityLogic Color Photo test suite provides the following results:

- Average Cyan Cartridge Yield – Up to 198 standard pages
- Average Magenta Cartridge Yield – Up to 217 standard pages
- Average Yellow Cartridge Yield – Up to 220 standard pages
- Estimated supplemental Photo Black Cartridge Yield – Up to 600 standard pages
- Estimated supplemental K (Black) Cartridge Yield – Up to 1,796 standard pages

Values obtained by continuous printing. Declared yield value in accordance with QualityLogic Color Photo Cartridge Yield Test Methodology.

Cartridge Identifier	Color	Average (pages)	Standard Deviation (pages)	90% Lower Confidence (pages)	Number used in calculations/test	Primary/ Supplemental
CLI-221C	Cyan	206	12	198	9/12	Primary
CLI-221M	Magenta	222	8	217	9/10	Primary
CLI-221Y	Yellow	225	8	220	9/9	Primary
CLI-221BK	Photo Black	675	44	600	3/5	Supplemental
PGI-220BK	K (Black)	1,875	46	1,796	3/3	Supplemental

<b>Printer Identifier</b>	<b>Epson Artisan 800</b>
Printer Manufacturer	Epson
Cartridge Identifier	T0981, T0992, T0993, T0994, T0995, T0996
Cartridge Type	Separate ink supply and print head
Date Tested	9/23/08 – 10/1/08
EOL Criteria	This printer has Ink Out which stops printing. Whichever came first, either Ink Out or Fade, was used as the EOL criteria.
Print mode used	Continuous
Paper Size	Letter
Media used	Xerox Business 4200, 92 Brightness 20lb. weight
Driver version	Driver Version= Epson Color Printing System 6.62

## Declaration of Yield

### Inkjet Cartridge Yield when tested in Epson Artisan 800:

Using the test suite defined in ISO/IEC 24712 provides the following results:

- Average K (Black) Cartridge Yield – Up to 574 standard pages
- Average Cyan Cartridge Yield – Up to 969 standard pages
- Average Magenta Cartridge Yield – Up to 453 standard pages
- Average Yellow Cartridge Yield – Up to 674 standard pages
- Average supplemental Light Cyan Cartridge Yield – Up to 340 standard pages
- Average supplemental Light Magenta Cartridge Yield – Up to 668 standard pages

Using the test page defined in ISO/IEC 19752 provides the following results:

- Average K (Black) Cartridge Yield – Up to 601 standard pages
- Estimated supplemental Cyan Cartridge Yield – Up to 1,971 standard pages
- Estimated supplemental Magenta Cartridge Yield – Up to 1,915 standard pages
- Estimated supplemental Yellow Cartridge Yield – Up to 6,642 standard pages
- Estimated supplemental Light Cyan Cartridge Yield – Up to 1,891 standard pages
- Estimated supplemental Light Magenta Cartridge Yield – Up to 2,321 standard pages

Values obtained by continuous printing. Declared yield values in accordance with ISO/IEC 24711

Using 24712 Test Suite						
Cartridge Identifier	Color	Average (pages)	Standard Deviation (pages)	90% Lower Confidence (pages)	Number used in calculations/test	Primary/ Supplemental
T0981	K (Black)	580	14	574	15/21	Primary
T0992	Cyan	989	32	969	9/12	Primary
T0993	Magenta	461	20	453	18/24	Primary
T0994	Yellow	690	30	674	12/18	Primary
T0995	Light Cyan	344	11	340	24/30	Supplemental
T0996	Light Magenta	680	23	668	12/18	Supplemental

Using 19752 Test Page						
Cartridge Identifier	Color	Average (pages)	Standard Deviation (pages)	90% Lower Confidence (pages)	Number used in calculations/test	Primary/ Supplemental
T0981	K (Black)	609	13	601	9/9	Primary
T0992	Cyan	2,138	99	1,971	3/3	Supplemental
T0993	Magenta	2,193	165	1,915	3/3	Supplemental
T0994	Yellow	6,793	89	6,642	3/3	Supplemental
T9005	Light Cyan	1,999	64	1,891	3/3	Supplemental
T0996	Light Magenta	2,532	125	2,321	3/3	Supplemental

Test results and cost information provided by QualityLogic. Tests were performed under laboratory conditions and end-user's results may vary. Test results, ink cartridge pricing and cost per page pricing subject to change without notice by QualityLogic. All test results and cost information are provided "as-is," "as available," and all warranties, expressed or implied, are hereby disclaimed. Users of the information contained herein assume full responsibility and risk of loss resulting from usage thereof.

<b>Printer Identifier</b>	<b>Epson Artisan 800</b>
Printer Manufacturer	Epson
Cartridge Identifier	T0981, T0992, T0993, T0994, T0995, T0996
Cartridge Type	Separate ink supply and print head
Date Tested	10/1/08 – 10/8/08
EOL Criteria	This printer has Ink Out which stops printing. Whichever came first, either Ink Out or Fade, was used as the EOL criteria.
Print mode used	Continuous
Paper Size	4" x 6" borderless photo on 8 ½" x 11" photo paper
Media used	Epson Ultra Premium Photo Paper, Glossy (S042175)
Driver version	Driver Version = Epson Color Printing System 6.62 Paper and Quality Options = Changed to Ultra Premium Photo Paper Glossy from Plain Paper / Bright White Paper Changed to Photo RPM (Max dpi) from Normal

## Declaration of Yield

### Inkjet Cartridge Yield when tested in Epson Artisan 800:

Using the QualityLogic Color Photo test suite provides the following results:

- Average Cyan Cartridge Yield – Up to 496 standard pages
- Average Magenta Cartridge Yield – Up to 357 standard pages
- Average Yellow Cartridge Yield – Up to 241 standard pages
- Average Light Cyan Cartridge Yield – Up to 102 standard pages
- Average Light Magenta Cartridge Yield – Up to 112 standard pages
- Estimated supplemental K (Black) Cartridge Yield – Up to 593 standard pages

Values obtained by continuous printing. Declared yield values in accordance with QualityLogic Color Photo Yield Test Methodology

Cartridge Identifier	Color	Average (pages)	Standard Deviation (pages)	90% Lower Confidence (pages)	Number used in calculations/test	Primary/ Supplemental
T0992	Cyan	505	15	496	9/9	Primary
T0993	Magenta	364	12	357	12/15	Primary
T0994	Yellow	245	8	241	17/20	Primary
T0995	Light Cyan	102	3	102	43/45	Primary
T0996	Light Magenta	113	4	112	40/43	Primary
T0981	K (Black)	634	50	593	6/9	Supplemental

<b>Printer Identifier</b>	<b>Epson Stylus NX115</b>
Printer Manufacturer	Epson
Cartridge Identifier	T0881, T0882, T0883, T0884
Cartridge Type	Separate ink supply and print head
Date Tested	4/15/2010 – 4/21/2010
EOL Criteria	This printer has Ink Out which stops printing. Whichever came first, either Ink Out or Fade, was used as the EOL criteria.
Print mode used	Continuous
Paper Size	Letter
Media used	Xerox Business 4200, 92 Brightness 20lb. weight
Driver version	Driver Version = Epson Color Printing System Version 6.61 The following driver settings were changed from default: Color Ink Test: None Mono Ink Test: Print Options = The "Black/Grayscale" setting was enabled.

## Declaration of Yield

<b>Inkjet Cartridge Yield when tested in Epson Stylus NX115:</b>
Using the test suite defined in ISO/IEC 24712 provides the following results: Average K (Black) Cartridge Yield – Up to 171 standard pages Average Cyan Cartridge Yield – Up to 256 standard pages Average Magenta Cartridge Yield – Up to 151 standard pages Average Yellow Cartridge Yield – Up to 238 standard pages
Using the test page defined in ISO/IEC 19752 provides the following results: Average K (Black) Cartridge Yield – Up to 180 standard pages Estimated supplemental Cyan Cartridge Yield – Up to 1,716 standard pages Estimated supplemental Magenta Cartridge Yield – Up to 1,693 standard pages Estimated supplemental Yellow Cartridge Yield – Up to 2,582 standard pages
Values obtained by continuous printing. Declared yield values in accordance with ISO/IEC 24711

Using 24712 Test Suite						
Cartridge Identifier	Color	Average (pages)	Standard Deviation (pages)	90% Lower Confidence (pages)	Number used in calculations/test	Primary/ Supplemental
T0881	K (Black)	175	7	171	12/18	Primary
T0882	Cyan	265	15	256	9/12	Primary
T0883	Magenta	153	5	151	15/20	Primary
T0884	Yellow	246	12	238	9/15	Primary

Using 19752 Test Page						
Cartridge Identifier	Color	Average (pages)	Standard Deviation (pages)	90% Lower Confidence (pages)	Number used in calculations/test	Primary/ Supplemental
T0881	K (Black)	192	19	180	9/9	Primary
T0882	Cyan	2,456	439	1,716	3/3	Supplemental
T0883	Magenta	3,019	787	1,693	3/3	Supplemental
T0884	Yellow	3,268	407	2,582	3/4	Supplemental

Test results and cost information provided by QualityLogic. Tests were performed under laboratory conditions and end-user's results may vary. Test results, ink cartridge pricing and cost per page pricing subject to change without notice by QualityLogic. All test results and cost information are provided "as-is," "as available," and all warranties, expressed or implied, are hereby disclaimed. Users of the information contained herein assume full responsibility and risk of loss resulting from usage thereof.

<b>Printer Identifier</b>	<b>Epson Stylus NX115</b>
Printer Manufacturer	Epson
Cartridge Identifier	T0881, T0882, T0883, T0884
Cartridge Type	Separate ink supply and print head
Date Tested	4/23/2010 – 4/29/2010
EOL Criteria	This printer has Ink Out which stops printing. Whichever came first, either Ink Out or Fade, was used as the EOL criteria.
Print mode used	Continuous
Paper Size	4" x 6" borderless photo on 8 1/2" x 11" photo paper
Media used	Epson Ultra Premium Photo Paper Glossy (S042175)
Driver version	Driver Version = Epson Color Printing System Version 6.61 The following driver settings were changed from default: Quality Option = Changed to Best Photo from Text Type = Changed to Ultra Premium Photo Paper Glossy from Plain Paper / Bright White Paper

## Declaration of Yield

<p><b>Inkjet Cartridge Yield when tested in Epson Stylus NX115:</b></p> <p>Using the QualityLogic Color Photo test suite provides the following results:</p> <ul style="list-style-type: none"> <li>Average Cyan Cartridge Yield – Up to 65 standard pages</li> <li>Average Magenta Cartridge Yield – Up to 57 standard pages</li> <li>Average Yellow Cartridge Yield – Up to 85 standard pages</li> <li>Estimated Supplemental K (Black) Cartridge Yield – Up to 191 standard pages</li> </ul> <p>Values obtained by continuous printing. Declared yield values in accordance with QualityLogic Color Photo Yield Test Methodology</p>
---

Cartridge Identifier	Color	Average (pages)	Standard Deviation (pages)	90% Lower Confidence (pages)	Number used in calculations/test	Primary/ Supplemental
T0882	Cyan	66	2	65	11/13	Primary
T0883	Magenta	58	2	57	12/15	Primary
T0884	Yellow	88	5	85	9/9	Primary
T0881	K (Black)	197	4	191	3/6	Supplemental

<b>Printer Identifier</b>	<b>Epson Stylus NX400</b>
Printer Manufacturer	Epson
Cartridge Identifier	T0691, T0692, T0693, T0694
Cartridge Type	Separate ink supply and print head
Date Tested	9/4/08 – 9/12/08
EOL Criteria	This printer has Ink Out which stops printing. Whichever came first, either Ink Out or Fade, was used as the EOL criteria.
Print mode used	Continuous
Paper Size	Letter
Media used	Xerox Business 4200, 92 Brightness 20lb. weight
Driver version	Driver Version = 02/26/2008, 6.60.00.00 The following driver settings were changed from default: Mono Ink test: Quality Option = Changed to Text from Text & Image The "Black Ink Only" option was enabled in Print Options

## Declaration of Yield

### Inkjet Cartridge Yield when tested in Epson Stylus NX400:

Using the test suite defined in ISO/IEC 24712 provides the following results:

- Average K (Black) Cartridge Yield – Up to 255 standard pages
- Average Cyan Cartridge Yield – Up to 400 standard pages
- Average Magenta Cartridge Yield – Up to 299 standard pages
- Average Yellow Cartridge Yield – Up to 430 standard pages

Using the test page defined in ISO/IEC 19752 provides the following results:

- Average K (Black) Cartridge Yield – Up to 259 standard pages
- Estimated supplemental Cyan Cartridge Yield – Up to 1,237 standard pages
- Estimated supplemental Magenta Cartridge Yield – Up to 1,608 standard pages
- Estimated supplemental Yellow Cartridge Yield – Up to 1,541 standard pages

Values obtained by continuous printing. Declared yield values in accordance with ISO/IEC 24711

Using 24712 Test Suite						
Cartridge Identifier	Color	Average (pages)	Standard Deviation (pages)	90% Lower Confidence (pages)	Number used in calculations/test	Primary/ Supplemental
T0691	K (Black)	261	13	255	15/21	Primary
T0692	Cyan	413	20	400	9/15	Primary
T0693	Magenta	307	16	299	12/18	Primary
T0694	Yellow	444	22	430	9/12	Primary

Using 19752 Test Page						
Cartridge Identifier	Color	Average (pages)	Standard Deviation (pages)	90% Lower Confidence (pages)	Number used in calculations/test	Primary/ Supplemental
T0691	K (Black)	269	16	259	9/9	Primary
T0692	Cyan	1,698	274	1,237	3/3	Supplemental
T0693	Magenta	2,440	494	1,608	3/3	Supplemental
T0694	Yellow	2,439	532	1,541	3/3	Supplemental

<b>Printer Identifier</b>	<b>Epson Stylus NX400</b>
Printer Manufacturer	Epson
Cartridge Identifier	T0691, T0692, T0693, T0694
Cartridge Type	Separate ink supply and print head
Date Tested	9/12/08 – 9/19/08
EOL Criteria	This printer has Ink Out which stops printing. Whichever came first, either Ink Out or Fade, was used as the EOL criteria.
Print mode used	Continuous
Paper Size	4" x 6" borderless photo on 8 1/2" x 11" photo paper
Media used	Epson Premium Photo Paper, Glossy (S041286)
Driver version	Driver Version = 02/26/2008, 6.60.00.00 The following driver settings were changed from default: Paper Options Type = Changed to Premium Photo Paper Glossy from Plain Paper / Bright White paper Quality Option = Changed to Photo RPM (Max dpi) from Text & Image

## Declaration of Yield

### Inkjet Cartridge Yield when tested in Epson Stylus NX400:

Using the QualityLogic Color Photo test suite provides the following results:

- Average Cyan Cartridge Yield – Up to 90 standard pages
- Average Magenta Cartridge Yield – Up to 91 standard pages
- Average Yellow Cartridge Yield – Up to 123 standard pages
- Estimated supplemental K (Black) Cartridge Yield – Up to 479 standard pages

Values obtained by continuous printing. Declared yield values in accordance with QualityLogic Color Photo Yield Test Methodology

Cartridge Identifier	Color	Average (pages)	Standard Deviation (pages)	90% Lower Confidence (pages)	Number used in calculations/test	Primary/ Supplemental
T0692	Cyan	95	8	90	12/15	Primary
T0693	Magenta	95	7	91	11/13	Primary
T0694	Yellow	128	8	123	9/9	Primary
T0691	K (Black)	527	29	479	3/3	Supplemental

<b>Printer Identifier</b>	<b>Epson Stylus NX420</b>
Printer Manufacturer	Epson
Cartridge Identifier	T1251, T1252, T1253, T1254
Cartridge Type	Separate ink supply and print head
Date Tested	6/14/2010 – 6/18/2010
EOL Criteria	This printer has Ink Out which stops printing. Whichever came first, either Ink Out or Fade, was used as the EOL criteria.
Print mode used	Continuous
Paper Size	Letter
Media used	Xerox Business 4200, 92 Brightness 20lb. weight
Driver version	Driver Version = Epson Color Printing System Version 6.70 The following driver settings were changed from default: Color Ink Test: None Mono Ink test: Quality Option = Changed to Text from Text & Image Print Options = The "Black/Grayscale" setting was enabled.

## Declaration of Yield

<b>Inkjet Cartridge Yield when tested in Epson Stylus NX420:</b>
Using the test suite defined in ISO/IEC 24712 provides the following results: Average K (Black) Cartridge Yield – Up to 254 standard pages Average Cyan Cartridge Yield – Up to 502 standard pages Average Magenta Cartridge Yield – Up to 288 standard pages Average Yellow Cartridge Yield – Up to 474 standard pages
Using the test page defined in ISO/IEC 19752 provides the following results: Average K (Black) Cartridge Yield – Up to 283 standard pages Estimated supplemental Cyan Cartridge Yield – Up to 9,241 standard pages Estimated supplemental Magenta Cartridge Yield – Up to 11,168 standard pages Estimated supplemental Yellow Cartridge Yield – Up to 10,233 standard pages
Values obtained by continuous printing. Declared yield values in accordance with ISO/IEC 24711

Using 24712 Test Suite						
Cartridge Identifier	Color	Average (pages)	Standard Deviation (pages)	90% Lower Confidence (pages)	Number used in calculations/test	Primary/ Supplemental
T1251	K (Black)	257	8	254	17/20	Primary
T1252	Cyan	508	11	502	9/10	Primary
T1253	Magenta	290	5	288	15/19	Primary
T1254	Yellow	480	9	474	9/13	Primary

Using 19752 Test Page						
Cartridge Identifier	Color	Average (pages)	Standard Deviation (pages)	90% Lower Confidence (pages)	Number used in calculations/test	Primary/ Supplemental
T1251	K (Black)	285	4	283	9/12	Primary
T1252	Cyan	10,850	955	9,241	3/6	Supplemental
T1253	Magenta	12,246	639	11,168	3/6	Supplemental
T1254	Yellow	10,966	435	10,233	3/6	Supplemental

Test results and cost information provided by QualityLogic. Tests were performed under laboratory conditions and end-user's results may vary. Test results, ink cartridge pricing and cost per page pricing subject to change without notice by QualityLogic. All test results and cost information are provided "as-is," "as available," and all warranties, expressed or implied, are hereby disclaimed. Users of the information contained herein assume full responsibility and risk of loss resulting from usage thereof.

<b>Printer Identifier</b>	<b>Epson Stylus NX420</b>
Printer Manufacturer	Epson
Cartridge Identifier	T1251, T1252, T1253, T1254
Cartridge Type	Separate ink supply and print head
Date Tested	6/18/2010 – 7/7/2010
EOL Criteria	This printer has Ink Out which stops printing. Whichever came first, either Ink Out or Fade, was used as the EOL criteria.
Print mode used	Continuous
Paper Size	4" x 6" borderless photo on 8 ½" x 11" photo paper
Media used	Epson Ultra Premium Photo Paper Glossy (S042175)
Driver version	Driver Version = Epson Color Printing System Version 6.70 The following driver settings were changed from default: Quality Option = Changed to Best Photo from Text & Image Type = Changed to Ultra Premium Photo Paper Glossy from Plain Paper / Bright White Paper

## Declaration of Yield

<p><b>Inkjet Cartridge Yield when tested in Epson Stylus NX420:</b></p> <p>Using the QualityLogic Color Photo test suite provides the following results:</p> <ul style="list-style-type: none"> <li>Average Cyan Cartridge Yield – Up to 97 standard pages</li> <li>Average Magenta Cartridge Yield – Up to 99 standard pages</li> <li>Average Yellow Cartridge Yield – Up to 192 standard pages</li> <li>Estimated supplemental K (Black) Cartridge Yield – Up to 396 standard pages</li> </ul> <p>Values obtained by continuous printing. Declared yield values in accordance with QualityLogic Color Photo Yield Test Methodology</p>
--

Cartridge Identifier	Color	Average (pages)	Standard Deviation (pages)	90% Lower Confidence (pages)	Number used in calculations/test	Primary/ Supplemental
T1252	Cyan	98	2	97	17/19	Primary
T1253	Magenta	101	4	99	16/19	Primary
T1254	Yellow	195	5	192	9/9	Primary
T1251	K (Black)	410	8	396	3/6	Supplemental

<b>Printer Identifier</b>	<b>Epson WorkForce 610</b>
Printer Manufacturer	Epson
Cartridge Identifier	T0691, T0692, T0693, T0694
Cartridge Type	Separate ink supply and print head
Date Tested	10/15/09 – 10/22/09
EOL Criteria	This printer has Ink Out which stops printing. Whichever came first, either Ink Out or Fade, was used as the EOL criteria.
Print mode used	Continuous
Paper Size	Letter
Media used	Xerox Business 4200, 92 Brightness 20lb. weight
Driver version	Driver Version = Epson Color Printing System Version 6.61 Mono Ink Test: The Black/Grayscale option was enabled under Print Options

## Declaration of Yield

### Inkjet Cartridge Yield when tested in Epson WorkForce 610:

Using the test suite defined in ISO/IEC 24712 provides the following results:

- Average K (Black) Cartridge Yield – Up to 246 standard pages
- Average Cyan Cartridge Yield – Up to 403 standard pages
- Average Magenta Cartridge Yield – Up to 284 standard pages
- Average Yellow Cartridge Yield – Up to 423 standard pages

Using the test page defined in ISO/IEC 19752 provides the following results:

- Average K (Black) Cartridge Yield – Up to 279 standard pages
- Estimated supplemental Cyan Cartridge Yield – Up to 3,570 standard pages
- Estimated supplemental Magenta Cartridge Yield – Up to 5,111 standard pages
- Estimated supplemental Yellow Cartridge Yield – Up to 3,549 standard pages

Values obtained by continuous printing. Declared yield values in accordance with ISO/IEC 24711

Using 24712 Test Suite						
Cartridge Identifier	Color	Average (pages)	Standard Deviation (pages)	90% Lower Confidence (pages)	Number used in calculations/test	Primary/ Supplemental
T0691	K (Black)	254	18	246	14/20	Primary
T0692	Cyan	413	15	403	9/14	Primary
T0693	Magenta	289	9	284	12/18	Primary
T0694	Yellow	431	13	423	9/12	Primary

Using 19752 Test Page						
Cartridge Identifier	Color	Average (pages)	Standard Deviation (pages)	90% Lower Confidence (pages)	Number used in calculations/test	Primary/ Supplemental
T0691	K (Black)	281	4	279	9/9	Primary
T0692	Cyan	3,751	107	3,570	3/3	Supplemental
T0693	Magenta	5,163	31	5,111	3/3	Supplemental
T0694	Yellow	3,778	136	3,549	3/3	Supplemental

<b>Printer Identifier</b>	<b>Epson WorkForce 610</b>
Printer Manufacturer	Epson
Cartridge Identifier	T0691, T0692, T0693, T0694
Cartridge Type	Separate ink supply and print head
Date Tested	10/22/09 – 10/28/09
EOL Criteria	This printer has Ink Out which stops printing. Whichever came first, either Ink Out or Fade, was used as the EOL criteria.
Print mode used	Continuous
Paper Size	4" x 6" borderless photo on 8 1/2" x 11" photo paper
Media used	Epson Ultra Premium Photo Paper, Glossy (S042175)
Driver version	Driver Version = Epson Color Printing System Version 6.61 The following driver settings were changed from default: Paper and Quality Options (Advanced tab) = Changed to Ultra Premium Photo Paper Glossy from Plain Paper / Bright White Paper Paper and Quality Options (Advanced tab) = Changed to Photo RPM (Max dpi) from Normal

## Declaration of Yield

### Inkjet Cartridge Yield when tested in Epson WorkForce 610:

Using the QualityLogic Color Photo test suite provides the following results:

- Average Cyan Cartridge Yield – Up to 109 standard pages
- Average Magenta Cartridge Yield – Up to 109 standard pages
- Average Yellow Cartridge Yield – Up to 135 standard pages
- Estimated supplemental K (Black) Cartridge Yield – Up to 249 standard pages

Values obtained by continuous printing. Declared yield values in accordance with QualityLogic Color Photo Yield Test Methodology

Cartridge Identifier	Color	Average (pages)	Standard Deviation (pages)	90% Lower Confidence (pages)	Number used in calculations/test	Primary/ Supplemental
T0692	Cyan	112	5	109	9/12	Primary
T0693	Magenta	112	5	109	9/12	Primary
T0694	Yellow	141	9	135	9/9	Primary
T0691	K (Black)	272	14	249	3/6	Supplemental

<b>Printer Identifier</b>	<b>Epson WorkForce 635</b>
Printer Manufacturer	Epson
Cartridge Identifier	T1261, T1262, T1263, T1264
Cartridge Type	Separate ink supply and print head
Date Tested	4/7/2011 – 4/14/2011
EOL Criteria	This printer has Ink Out which stops printing. Whichever came first, either Ink Out or Fade, was used as the EOL criteria.
Print mode used	Continuous
Paper Size	Letter
Media used	Xerox Business 4200, 92 Brightness 20lb. weight
Driver version	Driver Version = Epson Color Printing System Version 6.74 The following driver settings were changed from default: Mono Test: Print Options = The Black/Grayscale option was enabled.

## Declaration of Yield

<p><b>Inkjet Cartridge Yield when tested in Epson WorkForce 635:</b></p> <p>Using the test suite defined in ISO/IEC 24712 provides the following results:  Average K (Black) Cartridge Yield – Up to 400 standard pages  Average Cyan Cartridge Yield – Up to 463 standard pages  Average Magenta Cartridge Yield – Up to 365 standard pages  Average Yellow Cartridge Yield – Up to 569 standard pages</p> <p>Using the test page defined in ISO/IEC 19752 provides the following results:  Average K (Black) Cartridge Yield – Up to 455 standard pages  Estimated supplemental Cyan Cartridge Yield – Up to 10,331 standard pages  Estimated supplemental Magenta Cartridge Yield – Up to 9,759 standard pages  Estimated supplemental Yellow Cartridge Yield – Up to 10,520 standard pages</p> <p>Values obtained by continuous printing. Declared yield values in accordance with ISO/IEC 24711</p>
--

Using 24712 Test Suite						
Cartridge Identifier	Color	Average (pages)	Standard Deviation (pages)	90% Lower Confidence (pages)	Number used in calculations/test	Primary/ Supplemental
T1261	K (Black)	410	18	400	12/18	Primary
T1262	Cyan	475	20	463	9/15	Primary
T1263	Magenta	375	18	365	12/18	Primary
T1264	Yellow	601	51	569	9/12	Primary

Using 19752 Test Page						
Cartridge Identifier	Color	Average (pages)	Standard Deviation (pages)	90% Lower Confidence (pages)	Number used in calculations/test	Primary/ Supplemental
T1261	K (Black)	459	6	455	9/9	Primary
T1262	Cyan	10,437	63	10,331	3/3	Supplemental
T1263	Magenta	10,652	530	9,759	3/3	Supplemental
T1264	Yellow	10,868	207	10,520	3/3	Supplemental

Test results and cost information provided by QualityLogic. Tests were performed under laboratory conditions and end-user's results may vary. Test results, ink cartridge pricing and cost per page pricing subject to change without notice by QualityLogic. All test results and cost information are provided "as-is," "as available," and all warranties, expressed or implied, are hereby disclaimed. Users of the information contained herein assume full responsibility and risk of loss resulting from usage thereof.

<b>Printer Identifier</b>	<b>Epson WorkForce 635</b>
Printer Manufacturer	Epson
Cartridge Identifier	T1261, T1262, T1263, T1264
Cartridge Type	Separate ink supply and print head
Date Tested	4/14/2011 – 4/19/2011
EOL Criteria	This printer has Ink Out which stops printing. Whichever came first, either Ink Out or Fade, was used as the EOL criteria.
Print mode used	Continuous
Paper Size	4" x 6" borderless photo on 8 1/2" x 11" photo paper
Media used	Epson Ultra Premium Photo Paper Glossy (S042175)
Driver version	Driver Version = Epson Color Printing System Version 6.74 The following driver settings were changed from default: Quality Option = Changed to Best Photo from Text. Type = Changed to Ultra Premium Photo Paper Glossy from Plain Paper / Bright White Paper.

## Declaration of Yield

<p><b>Inkjet Cartridge Yield when tested in Epson WorkForce 635:</b></p> <p>Using the QualityLogic Color Photo test suite provides the following results:  Average Cyan Cartridge Yield – Up to 127 standard pages  Average Magenta Cartridge Yield – Up to 117 standard pages  Average Yellow Cartridge Yield – Up to 158 standard pages  Estimated supplemental K (Black) Cartridge Yield – Up to 185 standard pages</p> <p>Values obtained by continuous printing. Declared yield values in accordance with QualityLogic Color Photo Yield Test Methodology</p>
--

Cartridge Identifier	Color	Average (pages)	Standard Deviation (pages)	90% Lower Confidence (pages)	Number used in calculations/test	Primary/ Supplemental
T1262	Cyan	136	15	127	9/12	Primary
T1263	Magenta	122	10	117	12/14	Primary
T1264	Yellow	166	14	158	9/9	Primary
T1261	K (Black)	209	29	185	6/9	Supplemental

<b>Printer Identifier</b>	<b>HP Deskjet 1055 AiO Printer J410e</b>
Printer Manufacturer	Hewlett Packard
Cartridge Identifier	HP 61 – CH561WN, CH562WN
Cartridge Type	Integral ink supply and print head
Date Tested	3/24/2011 – 3/29/2011
EOL Criteria	Fade was used as the EOL criteria.
Print mode used	Continuous
Paper Size	Letter
Media used	Xerox Business 4200, 92 Brightness 20lb. weight
Driver version	Driver Version = 04.43.07.853

## Declaration of Yield

<p><b>Inkjet Cartridge Yield when tested in HP Deskjet 1055 AiO Printer J410e:</b></p> <p>Using the test suite defined in ISO/IEC 24712 provides the following results:  Average K (Black) Cartridge Yield – Up to 188 standard pages  Average Tri-color Cartridge Yield – Up to 160 standard pages</p> <p>Using the test page defined in ISO/IEC 19752 provides the following results:  Average K (Black) Cartridge Yield – Up to 199 standard pages  Estimated supplemental Tri-color Cartridge Yield – Up to 1,907 standard pages</p> <p>Values obtained by continuous printing. Declared yield values in accordance with ISO/IEC 24711</p>
--

Using 24712 Test Suite						
Cartridge Identifier	Color	Average (pages)	Standard Deviation (pages)	90% Lower Confidence (pages)	Number used in calculations/test	Primary/ Supplemental
HP 61 (CH561WN)	K(Black)	192	7	188	9/12	Primary
HP 61 (CH562WN)	Tri-color	163	6	160	9/15	Primary

Using 19752 Test Page						
Cartridge Identifier	Color	Average (pages)	Standard Deviation (pages)	90% Lower Confidence (pages)	Number used in calculations/test	Primary/ Supplemental
HP 61 (CH561WN)	K(Black)	201	4	199	9/9	Primary
HP 61 (CH562WN)	Tri-color	1,969	37	1,907	3/3	Supplemental

Test results and cost information provided by QualityLogic. Tests were performed under laboratory conditions and end-user's results may vary. Test results, ink cartridge pricing and cost per page pricing subject to change without notice by QualityLogic. All test results and cost information are provided "as-is," "as available," and all warranties, expressed or implied, are hereby disclaimed. Users of the information contained herein assume full responsibility and risk of loss resulting from usage thereof.

<b>Printer Identifier</b>	<b>HP Deskjet 1055 AiO Printer J410e</b>
Printer Manufacturer	Hewlett Packard
Cartridge Identifier	HP 61 - CH561WN, CH562WN
Cartridge Type	Integral ink supply and print head
Date Tested	3/29/2011 - 3/30/2011
EOL Criteria	Fade was used as the EOL criteria.
Print mode used	Continuous
Paper Size	4" x 6" borderless photo on 8 ½" x 11" photo paper
Media used	HP Premium Plus Photo Paper, High Gloss (Q1785A).
Driver version	Driver Version = 04.43.07.853 Paper Source = Changed to Photo Paper, Best Quality from Plain Paper, Normal Quality.

## Declaration of Yield

<p><b>Inkjet Cartridge Yield when tested in HP Deskjet 1055 AiO Printer J410e:</b></p> <p>Using the QualityLogic Color Photo test suite provides the following results:  Average Tri-Color Cartridge Yield - Up to 44 standard pages  Estimated supplemental K (Black) Cartridge Yield - Up to 1,902 standard pages</p> <p>Values obtained by continuous printing. Declared yield values in accordance with QualityLogic Color Photo Yield Test Methodology</p>
---

Cartridge Identifier	Color	Average (pages)	Standard Deviation (pages)	90% Lower Confidence (pages)	Number used in calculations/test	Primary/ Supplemental
HP 61 (CH562WN)	Tri-color	45	2	44	9/9	Primary
HP 61 (CH561WN)	K (Black)	2,213	184	1,902	3/3	Supplemental

Test results and cost information provided by QualityLogic. Tests were performed under laboratory conditions and end-user's results may vary. Test results, ink cartridge pricing and cost per page pricing subject to change without notice by QualityLogic. All test results and cost information are provided "as-is," "as available," and all warranties, expressed or implied, are hereby disclaimed. Users of the information contained herein assume full responsibility and risk of loss resulting from usage thereof.

<b>Printer Identifier</b>	<b>HP Deskjet 3050</b>
Printer Manufacturer	Hewlett Packard
Cartridge Identifier	HP 61 – CH561WN, CH562WN
Cartridge Type	Integral ink supply and print head
Date Tested	11/4/2010 – 11/9/2010
EOL Criteria	Fade was used as the EOL criteria.
Print mode used	Continuous
Paper Size	Letter
Media used	Xerox Business 4200, 92 Brightness 20lb. weight
Driver version	Driver Version = 04.35.01.800

## Declaration of Yield

### Inkjet Cartridge Yield when tested in HP Deskjet 3050:

Using the test suite defined in ISO/IEC 24712 provides the following results:

Average K (Black) Cartridge Yield – Up to 193 standard pages

Average Tri-Color Cartridge Yield – Up to 151 standard pages

Using the test page defined in ISO/IEC 19752 provides the following results:

Average K (Black) Cartridge Yield – Up to 196 standard pages

Estimated supplemental Tri-Color Cartridge Yield – Up to 1,522 standard pages

Values obtained by continuous printing. Declared yield values in accordance with ISO/IEC 24711

#### Using 24712 Test Suite

Cartridge Identifier	Color	Average (pages)	Standard Deviation (pages)	90% Lower Confidence (pages)	Number used in calculations/test	Primary/ Supplemental
HP 61 (CH561WN)	K (Black)	196	4	193	9/12	Primary
HP 61 (CH562WN)	Tri-Color	154	6	151	9/15	Primary

#### Using 19752 Test Page

Cartridge Identifier	Color	Average (pages)	Standard Deviation (pages)	90% Lower Confidence (pages)	Number used in calculations/test	Primary/ Supplemental
HP 61 (CH561WN)	K (Black)	202	9	196	9/9	Primary
HP 61 (CH562WN)	Tri-Color	1,625	61	1,522	3/3	Supplemental

<b>Printer Identifier</b>	<b>HP Deskjet 3050</b>
Printer Manufacturer	Hewlett Packard
Cartridge Identifier	HP 61 – CH561WN, CH562WN
Cartridge Type	Integral ink supply and print head
Date Tested	11/9/2010 – 11/10/2010
EOL Criteria	Fade was used as the EOL criteria.
Print mode used	Continuous
Paper Size	4" x 6" borderless photo on 8 ½" x 11" photo paper
Media used	HP Premium Plus Photo Paper, High Gloss (Q1785A)
Driver version	Driver Version = 04.35.01.800 The following driver settings were changed from default: Paper/Quality = Changed to Photo Paper, Best Quality from Plain Paper, Normal Quality

## Declaration of Yield

### Inkjet Cartridge Yield when tested in HP Deskjet 3050:

Using the QualityLogic Color Photo test suite provides the following results:

Average Tri-Color Cartridge Yield – Up to 41 standard pages

Estimated supplemental K (Black) Cartridge Yield – Up to 2,085 standard pages

Values obtained by continuous printing. Declared yield values in accordance with QualityLogic Color Photo Yield Test Methodology

Cartridge Identifier	Color	Average (pages)	Standard Deviation (pages)	90% Lower Confidence (pages)	Number used in calculations/test	Primary/ Supplemental
HP 61 (CH562WN)	Tri-Color	42	2	41	9/9	Primary
HP 61 (CH561WN)	K (Black)	2,481	235	2,085	3/3	Supplemental

<b>Printer Identifier</b>	<b>HP Deskjet F4580</b>
Printer Manufacturer	Hewlett Packard
Cartridge Identifier	HP 60 – CC640WN, CC643WN
Cartridge Type	Integral ink supply and print head
Date Tested	7/23/2010 – 7/27/2010
EOL Criteria	Fade was used as the EOL criteria.
Print mode used	Continuous
Paper Size	Letter
Media used	Xerox Business 4200, 92 Brightness 20lb. weight
Driver version	Driver Version = 70.91.410.0

## Declaration of Yield

<p><b>Inkjet Cartridge Yield when tested in HP Deskjet F4580:</b></p> <p>Using the test suite defined in ISO/IEC 24712 provides the following results:  Average K (Black) Cartridge Yield – Up to 197 standard pages  Average Tri-color Cartridge Yield – Up to 157 standard pages</p> <p>Using the test page defined in ISO/IEC 19752 provides the following results:  Average K (Black) Cartridge Yield – Up to 194 standard pages  Estimated supplemental Tri-color Cartridge Yield – Up to 1,160 standard pages</p> <p>Values obtained by continuous printing. Declared yield values in accordance with ISO/IEC 24711</p>
---

Using 24712 Test Suite						
Cartridge Identifier	Color	Average (pages)	Standard Deviation (pages)	90% Lower Confidence (pages)	Number used in calculations/test	Primary/ Supplemental
HP 60 (CC640WN)	K (Black)	199	3	197	9/12	Primary
HP 60 (CC643WN)	Tri-color	161	5	157	9/15	Primary

Using 19752 Test Page						
Cartridge Identifier	Color	Average (pages)	Standard Deviation (pages)	90% Lower Confidence (pages)	Number used in calculations/test	Primary/ Supplemental
HP 60 (CC640WN)	K (Black)	198	6	194	9/9	Primary
HP 60 (CC643WN)	Tri-color	1,230	41	1,160	3/3	Supplemental

<b>Printer Identifier</b>	<b>HP Deskjet F4580</b>
Printer Manufacturer	Hewlett Packard
Cartridge Identifier	HP 60 – CC640WN, CC643WN
Cartridge Type	Integral ink supply and print head
Date Tested	7/27/2010 – 7/28/2010
EOL Criteria	Fade was used as the EOL criteria.
Print mode used	Continuous
Paper Size	4" x 6" borderless photo on 8 ½" x 11" photo paper
Media used	HP Premium Plus Photo Paper, High Gloss (Q1785A)
Driver version	Driver Version = 70.91.410.0 The following driver settings were changed from default: Paper type =changed to HP Premium Plus Photo Papers from Plain paper

## Declaration of Yield

<p><b>Inkjet Cartridge Yield when tested in HP Deskjet F4580:</b></p> <p>Using the QualityLogic Color Photo test suite provides the following results:  Average Tri-Color Cartridge Yield – Up to 51 standard pages  Estimated supplemental K (Black) Cartridge Yield – Up to 1,512 standard pages</p> <p>Values obtained by continuous printing. Declared yield values in accordance with QualityLogic Color Photo Yield Test Methodology</p>
--

Cartridge Identifier	Color	Average (pages)	Standard Deviation (pages)	90% Lower Confidence (pages)	Number used in calculations/test	Primary/ Supplemental
HP 60 (CC643WN)	Tri-Color	52	2	51	9/9	Primary
HP 60 (CC640WN)	K (Black)	1,577	38	1,512	3/3	Supplemental

Test results and cost information provided by QualityLogic. Tests were performed under laboratory conditions and end-user's results may vary. Test results, ink cartridge pricing and cost per page pricing subject to change without notice by QualityLogic. All test results and cost information are provided "as-is," "as available," and all warranties, expressed or implied, are hereby disclaimed. Users of the information contained herein assume full responsibility and risk of loss resulting from usage thereof.

<b>Printer Identifier</b>	<b>HP Officejet J4680</b>
Printer Manufacturer	Hewlett-Packard
Cartridge Identifier	HP 901 - CC653AN, CC656AN
Cartridge Type	Integral ink supply and print head
Date Tested	10/15/09 – 10/23/09
EOL Criteria	Fade was used as the EOL criteria.
Print mode used	Continuous
Paper Size	Letter
Media used	Xerox Business 4200, 92 Brightness 20lb. weight
Driver version	Driver Version = 61.73.243.0 The following driver settings were changed from default: Minimize margins (Advanced tab) changed to On from Off

## Declaration of Yield

### Inkjet Cartridge Yield when tested in HP Officejet J4680:

Using the test suite defined in ISO/IEC 24712 provides the following results:

Average K (Black) Cartridge Yield – Up to 199 standard pages

Average Tri-color Cartridge Yield – Up to 342 standard pages

Using the test page defined in ISO/IEC 19752 provides the following results:

Average K (Black) Cartridge Yield – Up to 203 standard pages

Estimated supplemental Tri-color Cartridge Yield – Up to 2,458 standard pages

Values obtained by continuous printing. Declared yield values in accordance with ISO/IEC 24711

Using 24712 Test Suite						
Cartridge Identifier	Color	Average (pages)	Standard Deviation (pages)	90% Lower Confidence (pages)	Number used in calculations/test	Primary/ Supplemental
HP 901 (CC653AN)	K (Black)	202	5	199	15/21	Primary
HP 901 (CC656AN)	Tri-color	344	4	342	9/12	Primary

Using 19752 Test Page						
Cartridge Identifier	Color	Average (pages)	Standard Deviation (pages)	90% Lower Confidence (pages)	Number used in calculations/test	Primary/ Supplemental
HP 901 (CC653AN)	K (Black)	207	6	203	9/9	Primary
HP 901 (CC656AN)	Tri-color	2,634	104	2,458	3/3	Supplemental

<b>Printer Identifier</b>	<b>HP Officejet J4680</b>
Printer Manufacturer	Hewlett-Packard
Cartridge Identifier	HP 901 - CC653AN, CC656AN
Cartridge Type	Integral ink supply and print head
Date Tested	10/23/09 – 10/28/09
EOL Criteria	Fade was used as the EOL criteria.
Print mode used	Continuous
Paper Size	4" x 6" borderless photo on 8 ½" x 11" photo paper
Media used	HP Premium Plus Photo Paper, High Gloss (Q1785A)
Driver version	Driver Version = 61.73.243.0 The following driver settings were changed from default: Paper type = Changed to HP Premium Plus Photo Papers from Plain paper

## Declaration of Yield

### Inkjet Cartridge Yield when tested in HP Officejet J4680:

Using the QualityLogic Color Photo test suite provides the following results:

Average Tri-color Cartridge Yield – Up to 110 standard pages

Estimated supplemental K (Black) Cartridge Yield – Up to 1,772 standard pages

Values obtained by continuous printing. Declared yield values in accordance with QualityLogic Color Photo Yield Test Methodology

Cartridge Identifier	Color	Average (pages)	Standard Deviation (pages)	90% Lower Confidence (pages)	Number used in calculations/test	Primary/ Supplemental
HP 901 (CC656AN)	Tri-color	111	2	110	9/9	Primary
HP 901 (CC653AN)	K (Black)	1,797	15	1,772	3/3	Supplemental

<b>Printer Identifier</b>	<b>HP Officejet 6500A Plus – E710n</b>
Printer Manufacturer	Hewlett Packard
Cartridge Identifier	HP 920 – CD971AN, CH634AN, CH635AN, CH636AN
Cartridge Type	Separate ink supply and print head
Date Tested	4/6/2011 – 4/14/2011
EOL Criteria	Fade was used as the EOL criteria.
Print mode used	Continuous
Paper Size	Letter
Media used	Xerox Business 4200, 92 Brightness 20lb. weight
Driver version	Driver Version = 04.43.07.853 The following driver settings were changed from default: Mono Ink Test: The Print All Text in Black option was enabled under the Advanced tab.

## Declaration of Yield

<p><b>Inkjet Cartridge Yield when tested in HP Officejet 6500A Plus – E710n:</b></p> <p>Using the test suite defined in ISO/IEC 24712 provides the following results:  Average K (Black) Cartridge Yield – Up to 387 standard pages  Average Cyan Cartridge Yield – Up to 311 standard pages  Average Magenta Cartridge Yield – Up to 313 standard pages  Average Yellow Cartridge Yield – Up to 313 standard pages</p> <p>Using the test page defined in ISO/IEC 19752 provides the following results:  Average K (Black) Cartridge Yield – Up to 430 standard pages  Estimated supplemental Cyan Cartridge Yield – Up to 3,275 standard pages  Estimated supplemental Magenta Cartridge Yield – Up to 3,607 standard pages  Estimated supplemental Yellow Cartridge Yield – Up to 4,273 standard pages</p> <p>Values obtained by continuous printing. Declared yield values in accordance with ISO/IEC 24711</p>
--

Using 24712 Test Suite						
Cartridge Identifier	Color	Average (pages)	Standard Deviation (pages)	90% Lower Confidence (pages)	Number used in calculations/test	Primary/ Supplemental
HP 920 (CD971AN)	K (Black)	402	24	387	9/12	Primary
HP 920 (CH634AN)	Cyan	338	43	311	9/15	Primary
HP 920 (CH635AN)	Magenta	341	45	313	9/15	Primary
HP 920 (CH636AN)	Yellow	342	47	313	9/15	Primary

Using 19752 Test Page						
Cartridge Identifier	Color	Average (pages)	Standard Deviation (pages)	90% Lower Confidence (pages)	Number used in calculations/test	Primary/ Supplemental
HP 920 (CD971AN)	K (Black)	435	9	430	9/9	Primary
HP 920 (CH634AN)	Cyan	3,370	56	3,275	3/3	Supplemental
HP 920 (CH635AN)	Magenta	3,741	79	3,607	3/3	Supplemental
HP 920 (CH636AN)	Yellow	4,423	89	4,273	3/3	Supplemental

Test results and cost information provided by QualityLogic. Tests were performed under laboratory conditions and end-user's results may vary. Test results, ink cartridge pricing and cost per page pricing subject to change without notice by QualityLogic. All test results and cost information are provided "as-is," "as available," and all warranties, expressed or implied, are hereby disclaimed. Users of the information contained herein assume full responsibility and risk of loss resulting from usage thereof.

<b>Printer Identifier</b>	<b>HP Officejet 6500A Plus – E710n</b>
Printer Manufacturer	Hewlett Packard
Cartridge Identifier	HP 920 – CD971AN, CH634AN, CH635AN, CH636AN
Cartridge Type	Separate ink supply and print head
Date Tested	4/14/2011 – 4/18/2011
EOL Criteria	Fade was used as the EOL criteria.
Print mode used	Continuous
Paper Size	4" x 6" borderless photo on 8 ½" x 11" photo paper
Media used	HP Premium Plus Photo Paper, High Gloss (Q1785A)
Driver version	Driver Version = 04.43.07.853 The following driver settings were changed from default: Media = Changed to HP Premium Plus Photo Papers from Plain Paper. Quality Settings = Changed to Best from Normal.

## Declaration of Yield

<p><b>Inkjet Cartridge Yield when tested in HP Officejet 6500A Plus – E710n:</b></p> <p>Using the QualityLogic Color Photo test suite provides the following results:</p> <ul style="list-style-type: none"> <li>Average Cyan Cartridge Yield – Up to 92 standard pages</li> <li>Average Magenta Cartridge Yield – Up to 124 standard pages</li> <li>Average Yellow Cartridge Yield – Up to 89 standard pages</li> <li>Estimated supplemental K (Black) Cartridge Yield – Up to 2,702 standard pages</li> </ul> <p>Values obtained by continuous printing. Declared yield values in accordance with QualityLogic Color Photo Yield Test Methodology</p>
---

Cartridge Identifier	Color	Average (pages)	Standard Deviation (pages)	90% Lower Confidence (pages)	Number used in calculations/test	Primary/ Supplemental
HP 920 (CH634AN)	Cyan	97	9	92	12/15	Primary
HP 920 (CH635AN)	Magenta	130	10	124	9/9	Primary
HP 920 (CH636AN)	Yellow	99	16	89	9/12	Primary
HP 920 (CD971AN)	K (Black)	2,927	133	2,702	3/3	Supplemental

<b>Printer Identifier</b>	<b>HP Photosmart Plus e-AIO B210A</b>
Printer Manufacturer	Hewlett Packard
Cartridge Identifier	HP 564 – CB316WN, CB318WN, CB319WN, CB320WN
Cartridge Type	Separate ink supply and print head
Date Tested	11/4/2010 – 11/10/2010
EOL Criteria	Fade was used as the EOL criteria.
Print mode used	Continuous
Paper Size	Letter
Media used	Xerox Business 4200, 92 Brightness 20lb. weight
Driver version	Driver Version = 04.35.01.800

## Declaration of Yield

### Inkjet Cartridge Yield when tested in HP Photosmart Plus e B210a:

Using the test suite defined in ISO/IEC 24712 provides the following results:

Average K (Black) Cartridge Yield – Up to 284 standard pages

Average Cyan Cartridge Yield – Up to 261 standard pages

Average Magenta Cartridge Yield – Up to 262 standard pages

Average Yellow Cartridge Yield – Up to 260 standard pages

Using the test page defined in ISO/IEC 19752 provides the following results:

Average K (Black) Cartridge Yield – Up to 277 standard pages

Estimated supplemental Cyan Cartridge Yield – Up to 2,099 standard pages

Estimated supplemental Magenta Cartridge Yield – Up to 2,437 standard pages

Estimated supplemental Yellow Cartridge Yield – Up to 2,682 standard pages

Values obtained by continuous printing. Declared yield values in accordance with ISO/IEC 24711

#### Using 24712 Test Suite

Cartridge Identifier	Color	Average (pages)	Standard Deviation (pages)	90% Lower Confidence (pages)	Number used in calculations/test	Primary/ Supplemental
HP 564 (CB316WN)	K (Black)	299	24	284	9/12	Primary
HP 564 (CB318WN)	Cyan	269	13	261	9/15	Primary
HP 564 (CB319WN)	Magenta	269	12	262	9/15	Primary
HP 564 (CB320WN)	Yellow	268	14	260	9/15	Primary

#### Using 19752 Test Page

Cartridge Identifier	Color	Average (pages)	Standard Deviation (pages)	90% Lower Confidence (pages)	Number used in calculations/test	Primary/ Supplemental
HP 564 (CB316WN)	K (Black)	297	33	277	9/9	Primary
HP 564 (CB318WN)	Cyan	2,272	102	2,099	3/3	Supplemental
HP 564 (CB319WN)	Magenta	2,552	69	2,437	3/3	Supplemental
HP 564 (CB320WN)	Yellow	2,820	82	2,682	3/3	Supplemental

<b>Printer Identifier</b>	<b>HP Photosmart Plus e B210a</b>
Printer Manufacturer	Hewlett Packard
Cartridge Identifier	HP 564 – CB316WN, CB318WN, CB319WN, CB320WN
Cartridge Type	Separate ink supply and print head
Date Tested	11/10/2010 – 11/11/2010
EOL Criteria	Fade was used as the EOL criteria.
Print mode used	Continuous
Paper Size	4" x 6" borderless photo on 8 ½" x 11" photo paper
Media used	HP Premium Plus Photo Paper, High Gloss (Q1785A)
Driver version	Driver Version = 04.35.01.800 The following driver settings were changed from default: Media = Changed to HP Premium Plus Photo Papers from Plain Paper Quality Settings = Changed to Best from Normal

## Declaration of Yield

<p><b>Inkjet Cartridge Yield when tested in HP Photosmart Plus e B210a:</b></p> <p>Using the QualityLogic Color Photo test suite provides the following results:</p> <ul style="list-style-type: none"> <li>Average Cyan Cartridge Yield – Up to 84 standard pages</li> <li>Average Magenta Cartridge Yield – Up to 105 standard pages</li> <li>Average Yellow Cartridge Yield – Up to 84 standard pages</li> <li>Estimated supplemental K (Black) Cartridge Yield – Up to 1,473 standard pages</li> </ul> <p>Values obtained by continuous printing. Declared yield values in accordance with QualityLogic Color Photo Yield Test Methodology</p>
--

Cartridge Identifier	Color	Average (pages)	Standard Deviation (pages)	90% Lower Confidence (pages)	Number used in calculations/test	Primary/ Supplemental
HP 564 (CB318WN)	Cyan	86	4	84	11/14	Primary
HP 564 (CB319WN)	Magenta	116	18	105	9/9	Primary
HP 564 (CB320WN)	Yellow	87	5	84	11/13	Primary
HP 564 (CB316WN)	K (Black)	1,561	52	1,473	3/3	Supplemental

Test results and cost information provided by QualityLogic. Tests were performed under laboratory conditions and end-user's results may vary. Test results, ink cartridge pricing and cost per page pricing subject to change without notice by QualityLogic. All test results and cost information are provided "as-is," "as available," and all warranties, expressed or implied, are hereby disclaimed. Users of the information contained herein assume full responsibility and risk of loss resulting from usage thereof.

<b>Printer Identifier</b>	<b>HP Photosmart Premium</b>
Printer Manufacturer	Hewlett Packard
Cartridge Identifier	HP 564 – CB316WN, CB318WN, CB319WN, CB320WN, CB317WN
Cartridge Type	Separate ink supply and print head
Date Tested	3/26/2010 – 3/30/2010
EOL Criteria	Fade was used as the EOL criteria.
Print mode used	Continuous
Paper Size	Letter
Media used	Xerox Business 4200, 92 Brightness 20lb. weight
Driver version	Driver Version = 70.101.203.0 The following driver settings were changed from default: Paper type = Changed to Plain paper from Automatic

## Declaration of Yield

<b>Inkjet Cartridge Yield when tested in HP Photosmart Premium:</b>
Using the test suite defined in ISO/IEC 24712 provides the following results: Average K (Black) Cartridge Yield – Up to 298 standard pages Average Cyan Cartridge Yield – Up to 278 standard pages Average Magenta Cartridge Yield – Up to 278 standard pages Average Yellow Cartridge Yield – Up to 278 standard pages Estimated supplemental K (Photo Black) Cartridge Yield – Up to 1,894 standard pages
Using the test page defined in ISO/IEC 19752 provides the following results: Average K (Black) Cartridge Yield – Up to 344 standard pages Estimated supplemental Cyan Cartridge Yield – Up to 2,513 standard pages Estimated supplemental Magenta Cartridge Yield – Up to 2,924 standard pages Estimated supplemental Yellow Cartridge Yield – Up to 3,239 standard pages Estimated supplemental K (Photo Black) Cartridge Yield – Up to 6,593 standard pages
Values obtained by continuous printing. Declared yield values in accordance with ISO/IEC 24711

Using 24712 Test Suite						
Cartridge Identifier	Color	Average (pages)	Standard Deviation (pages)	90% Lower Confidence (pages)	Number used in calculations/test	Primary/ Supplemental
HP 564 (CB316WN)	K (Black)	313	24	298	9/12	Primary
HP 564 (CB318WN)	Cyan	285	11	278	9/15	Primary
HP 564 (CB319WN)	Magenta	285	11	278	9/15	Primary
HP 564 (CB320WN)	Yellow	285	11	278	9/15	Primary
HP 564 (CB317WN)	K (Photo Black)	2,092	117	1,894	3/6	Supplemental

Test results and cost information provided by QualityLogic. Tests were performed under laboratory conditions and end-user's results may vary. Test results, ink cartridge pricing and cost per page pricing subject to change without notice by QualityLogic. All test results and cost information are provided "as-is," "as available," and all warranties, expressed or implied, are hereby disclaimed. Users of the information contained herein assume full responsibility and risk of loss resulting from usage thereof.

Using 19752 Test Page						
Cartridge Identifier	Color	Average (pages)	Standard Deviation (pages)	90% Lower Confidence (pages)	Number used in calculations/test	Primary/ Supplemental
HP 564 (CB316WN)	K (Black)	355	19	344	9/9	Primary
HP 564 (CB318WN)	Cyan	2,629	69	2,513	3/3	Supplemental
HP 564 (CB319WN)	Magenta	3,039	68	2,924	3/3	Supplemental
HP 564 (CB320WN)	Yellow	3,502	156	3,239	3/3	Supplemental
HP 564 (CB317WN)	K (Photo Black)	7,266	399	6,593	3/3	Supplemental

Test results and cost information provided by QualityLogic. Tests were performed under laboratory conditions and end-user's results may vary. Test results, ink cartridge pricing and cost per page pricing subject to change without notice by QualityLogic. All test results and cost information are provided "as-is," "as available," and all warranties, expressed or implied, are hereby disclaimed. Users of the information contained herein assume full responsibility and risk of loss resulting from usage thereof.

<b>Printer Identifier</b>	<b>HP Photosmart Premium</b>
Printer Manufacturer	Hewlett Packard
Cartridge Identifier	HP 564 – CB316WN, CB318WN, CB319WN, CB320WN, CB317WN
Cartridge Type	Separate ink supply and print head
Date Tested	3/31/2010 – 4/2/2010
EOL Criteria	Fade was used as the EOL criteria.
Print mode used	Continuous
Paper Size	4" x 6" borderless photo on 8 ½" x 11" photo paper
Media used	HP Premium Plus Photo Paper, High Gloss (Q1785A)
Driver version	Driver Version = 70.101.203.0 The following driver settings were changed from default: Paper type = Changed to HP Premium Plus Photo Papers from Automatic Print quality = Changed to Best from Automatic

## Declaration of Yield

<b>Inkjet Cartridge Yield when tested in HP Photosmart Premium:</b>
Using the QualityLogic Color Photo test suite provides the following results: Average Cyan Cartridge Yield – Up to 97 standard pages Average Magenta Cartridge Yield – Up to 185 standard pages Average Yellow Cartridge Yield – Up to 132 standard pages Average K (Photo Black) Cartridge Yield – Up to 147 standard pages Estimated supplemental K (Black) Cartridge Yield – Up to 1,999 standard pages
Values obtained by continuous printing. Declared yield values in accordance with QualityLogic Color Photo Yield Test Methodology

Cartridge Identifier	Color	Average (pages)	Standard Deviation (pages)	90% Lower Confidence (pages)	Number used in calculations/test	Primary/ Supplemental
HP 564 (CB318WN)	Cyan	103	12	97	15/18	Primary
HP 564 (CB319WN)	Magenta	194	15	185	9/9	Primary
HP 564 (CB320WN)	Yellow	138	12	132	12/15	Primary
HP 564 (CB317WN)	K (Photo Black)	161	22	147	9/12	Primary
HP 564 (CB316WN)	K (Black)	2,197	118	1,999	3/3	Supplemental

<b>Printer Identifier</b>	<b>Lexmark Prevail Pro705</b>
Printer Manufacturer	Lexmark
Cartridge Identifier	100 series
Cartridge Type	Separate ink supply and print head
Date Tested	10/28/09 – 11/6/09
EOL Criteria	This printer has Ink Out which stops printing. Whichever came first, either Ink Out or Fade, was used as the EOL criteria.
Print mode used	Continuous
Paper Size	Letter
Media used	Xerox Business 4200, 92 Brightness 20lb. weight
Driver version	Driver Version = 1.2.0.0 The following driver settings were changed from default: Color Ink: Paper Type = Changed to Plain Paper from Automatic Mono Ink: Paper Type = Changed to Plain Paper from Automatic Print using black ink only was enabled under Ink Use

## Declaration of Yield

### Inkjet Cartridge Yield when tested in Lexmark Prevail Pro705:

Using the test suite defined in ISO/IEC 24712 provides the following results:

- Average K (Black) Cartridge Yield – Up to 239 standard pages
- Average Cyan Cartridge Yield – Up to 286 standard pages
- Average Magenta Cartridge Yield – Up to 237 standard pages
- Average Yellow Cartridge Yield – Up to 269 standard pages

Using the test page defined in ISO/IEC 19752 provides the following results:

- Average K (Black) Cartridge Yield – Up to 260 standard pages
- Estimated supplemental Cyan Cartridge Yield – Up to 2,826 standard pages
- Estimated supplemental Magenta Cartridge Yield – Up to 2,903 standard pages
- Estimated supplemental Yellow Cartridge Yield – Up to 2,906 standard pages

Values obtained by continuous printing. Declared yield values in accordance with ISO/IEC 24711

Using 24712 Test Suite						
Cartridge Identifier	Color	Average (pages)	Standard Deviation (pages)	90% Lower Confidence (pages)	Number used in calculations/test	Primary/ Supplemental
100 Black	K (Black)	246	12	239	9/15	Primary
100 Cyan	Cyan	291	9	286	9/12	Primary
100 Magenta	Magenta	244	12	237	9/15	Primary
100 Yellow	Yellow	272	4	269	9/15	Primary

Using 19752 Test Page						
Cartridge Identifier	Color	Average (pages)	Standard Deviation (pages)	90% Lower Confidence (pages)	Number used in calculations/test	Primary/ Supplemental
100 Black	K (Black)	264	7	260	9/9	Primary
100 Cyan	Cyan	3,119	174	2,826	3/3	Supplemental
100 Magenta	Magenta	3,250	206	2,903	3/3	Supplemental
100 Yellow	Yellow	3,327	250	2,906	3/3	Supplemental

<b>Printer Identifier</b>	<b>Lexmark Prevail Pro705</b>
Printer Manufacturer	Lexmark
Cartridge Identifier	100 series
Cartridge Type	Separate ink supply and print head
Date Tested	11/6/09 – 11/10/09
EOL Criteria	This printer has Ink Out which stops printing. Whichever came first, either Ink Out or Fade, was used as the EOL criteria.
Print mode used	Continuous
Paper Size	4" x 6" borderless photo on 8 ½" x 11" photo paper
Media used	Lexmark PerfectFinish Photo Paper, High Gloss (19Y0170)
Driver version	Driver Version = 1.2.0.0 The following driver settings were changed from default: Paper Type = Changed to Lexmark Perfectfinish Photo Paper from Automatic Print Setup = Changed to Best from Automatic

## Declaration of Yield

### Inkjet Cartridge Yield when tested in Lexmark Prevail Pro705:

Using the QualityLogic Color Photo test suite provides the following results:

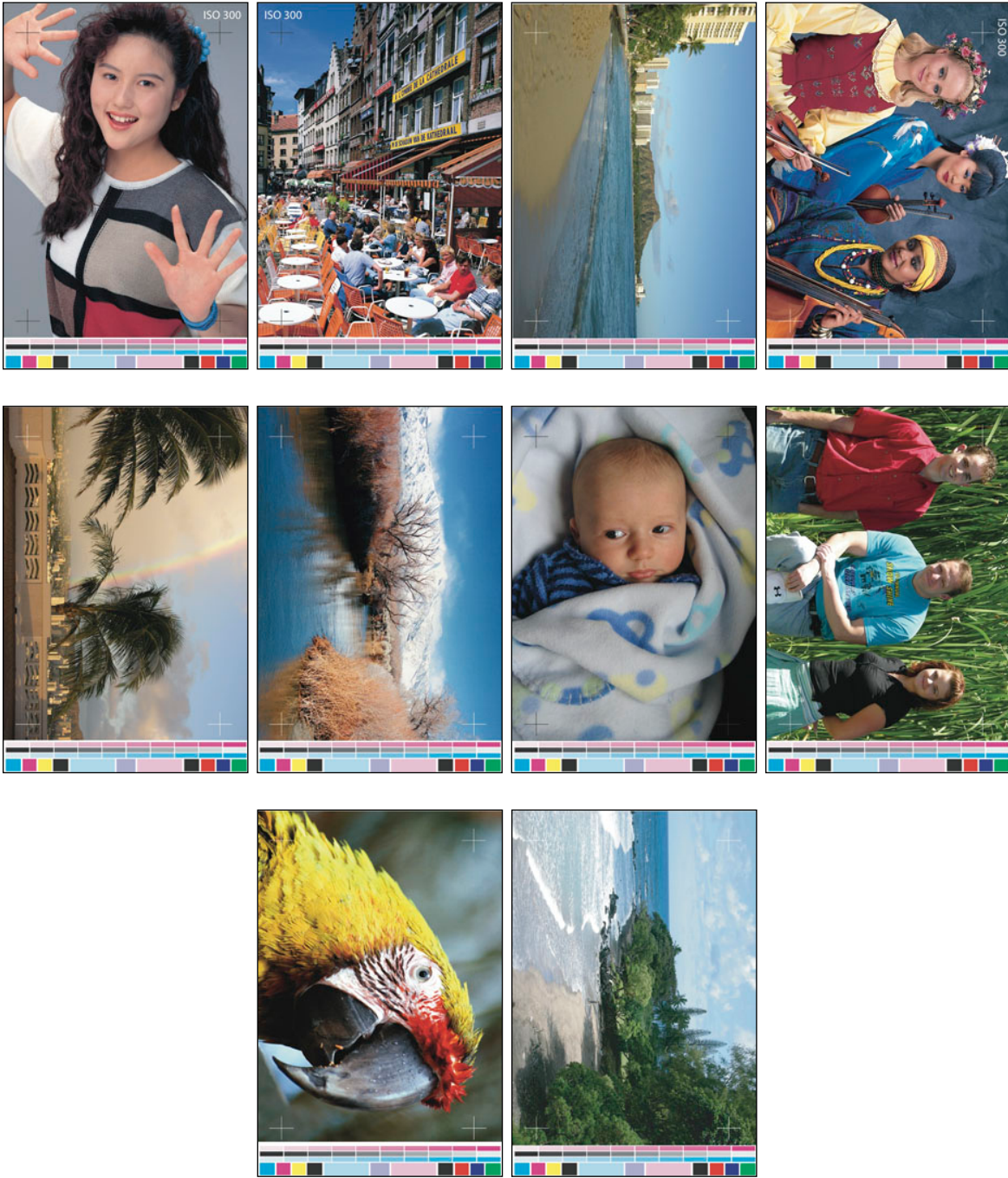
- Average Cyan Cartridge Yield – Up to 67 standard pages
- Average Magenta Cartridge Yield – Up to 80 standard pages
- Average Yellow Cartridge Yield – Up to 87 standard pages
- Estimated supplemental K (Black) Cartridge Yield – Up to 584 standard pages

Values obtained by continuous printing. Declared yield values in accordance with QualityLogic Color Photo Yield Test Methodology

Cartridge Identifier	Color	Average (pages)	Standard Deviation (pages)	90% Lower Confidence (pages)	Number used in calculations/test	Primary/ Supplemental
100 Cyan	Cyan	69	3	67	10/12	Primary
100 Magenta	Magenta	83	5	80	9/12	Primary
100 Yellow	Yellow	91	6	87	9/9	Primary
100 Black	K (Black)	633	29	584	3/3	Supplemental



# QualityLogic Photo Test Suite



Test results and cost information provided by QualityLogic. Tests were performed under laboratory conditions and end-user's results may vary. Test results, ink cartridge pricing and cost per page pricing subject to change without notice by QualityLogic. All test results and cost information are provided "as-is," "as available," and all warranties, expressed or implied, are hereby disclaimed. Users of the information contained herein assume full responsibility and risk of loss resulting from usage thereof.