

**IEEE 1547-2018 Adoption
Update:
Are You Ready for UL 1741
SB Certification?**



© NOVEMBER 2021, QUALITYLOGIC, INC

Today's Presenters

- **James Mater, GM, Smart Energy, QualityLogic**

James is one of the industry-leading experts on smart grid standards, interoperability, and the maturity of eco-systems of products based on these standards. James has given dozens of presentations and authored multiple papers on interoperability in the smart grid. He is a member of both the IEEE 1547.1 and 1547.2 Work Groups.



- **Steve Kang, Sr. VP Engineering, QualityLogic**

Steve is a leading technical expert on IEEE 2030.5 and CA Rule 21 based Common Smart Inverter Profile (CSIP) implementation guide. He has been involved with IEEE 2030.5 since 2010 and has taught hundreds of people around the globe on IEEE 2030.5. Steve is leading the QualityLogic IEEE 1547.1 test tool effort.



QualityLogic's Role in the Smart Energy Industry

- **QualityLogic focused on Smart Energy Testing**

- IEEE 2030.5 and OpenADR (Approved Certification Test Tools)
- Standards Training & Consulting

- **QualityLogic is a Contributor to IEEE 1547 and UL 1741**

- Member of IEEE 1547-2018 Work Group
- Member of IEEE 1547.1 WG and 1547.1 Interop WG
- Member of IEEE 1547.2 and 1547.2 Interop WG
- Member of UL 1741 STP
- First vendor to offer 1547.1 Conformance Test Tools

- **QualityLogic Has Been involved With 2030.5 Since 2010**

- Only SunSpec approved test harness for 2030.5/CSIP
- Used by NRTLs and End Users to perform 2030.5 Testing/Certification

- **Active in Standards and Certification Program Development**

- IEEE 2030.5, UL 3001, CSIP, 1547/1547.1, SAE, OpenADR, MESA-DER, UL 1741 SC, SunSpec/SAE J3072 Profile for IEEE 2030.5

In This Webinar We'll Cover



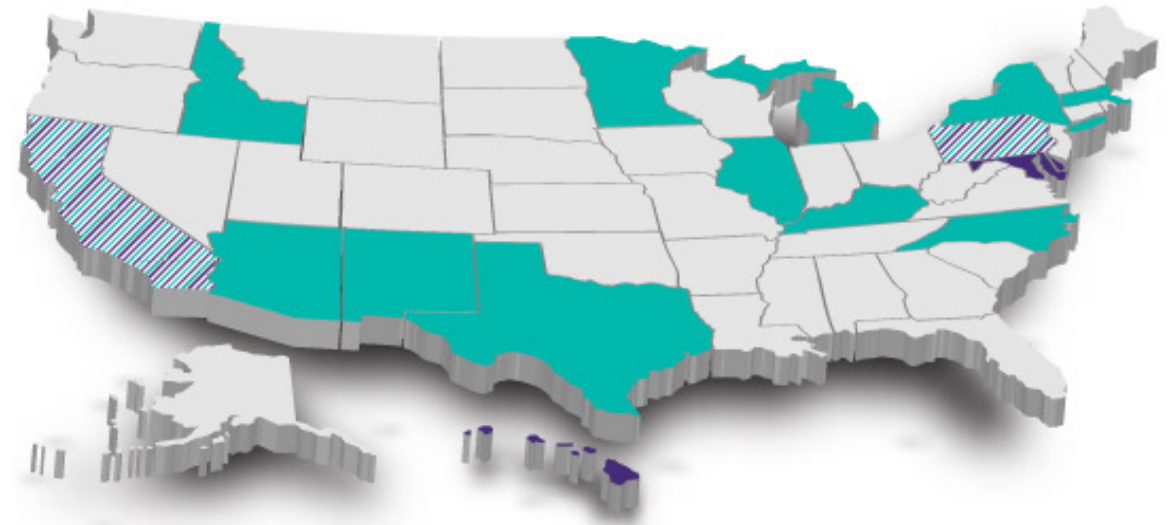
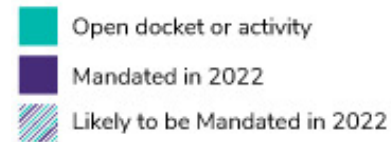
- **IEEE 1547 Background**
- **The Interop and Type Testing requirements in IEEE 1547-2018 and 1547.1-2020**
- **UL 1741 SB adoption and certification timeline**
- **The impact of IEEE 1547**
- **Challenges in testing and certifying the Interop and Type requirements**
- **QualityLogic's test tools for validating IEEE 1547 Interop and Type Testing Conformance**
- **Test system architecture and features**
- **Demonstration of QualityLogic 1547.1 Test Tool with Inverter and Lab Equipment**
- **Questions and Answers**

IEEE 1547 Background

- **IEEE 1547 and 1547.1 were initially approved in 2003 after 3 years of intense debate and development**
 - Standardized behavior of interconnected DER in abnormal conditions. Primary concerns were grid stability and safety.
- **For the United States, the Energy Policy Act of 2005 established IEEE 1547 as the interconnection standard for distributed generation resources**
 - *Interconnection services shall be offered based upon ...IEEE Standard 1547 for Interconnecting Distributed Resources with Electric Power Systems, as they may be amended from time to time.*
- **Revised in 2014 to address changing grid requirements for DER**
 - Addressed voltage regulation, voltage response and frequency response to Area EPS abnormal conditions.
 - IEEE 1547.1 was also revised in 2014 and 2015.
- **IEEE 1547 was revised again in 2018 and 1547.1 approved in 2020**
 - As DERs were seen as potential grid resources, the need for additional functionality and interoperability drove the most recent 1547 update.
 - The need for communications was recognized in the standard for the first time.

Adoption of IEEE 1547 in the US

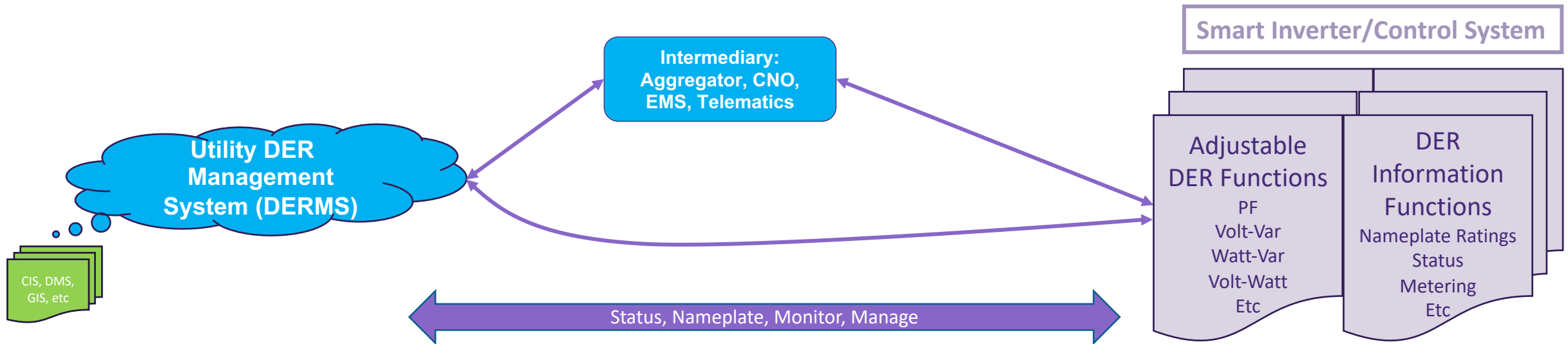
- **On February 12, 2020, NARUC approved a [resolution](#) recommending state commissions adopt IEEE 1547-2018.**
- **UL 1741 SB Revision adopted September 28, 2021 – certification testing starts.**
- **NRTLs have been gearing up for the past year.**
- **IREC survey Aug-Sep 2021**
 - Covered 60% of inverter families on CEC list
 - 3 leading NRTLs
 - Estimates of 8-12 weeks testing per inverter family
 - >1 year to certify ~80% of inverter families tested
 - Plus time for certification processing, listing by CEC and distribution of certified inverters
- **Latest CA SIWG discussions**
 - Proposed Early Adopter Phase (SB accepted) starting Aug 1, 2022
 - Proposed full compliance required November 1, 2022



Based on information from the "Forum on Inverter Grid Integration Issues (FIGII)", November 20, 2020, Minutes", EPRI Map September 2021 ([States-adopting-IEEE-1547-2018.png \(1421x681\)](#)), and IEEE ([IEEE Std 1547-2018 \(Revision of IEEE Std 1547-2003\) - IEEE Standards Coordinating Committee 21 \(SCC21\)](#)).

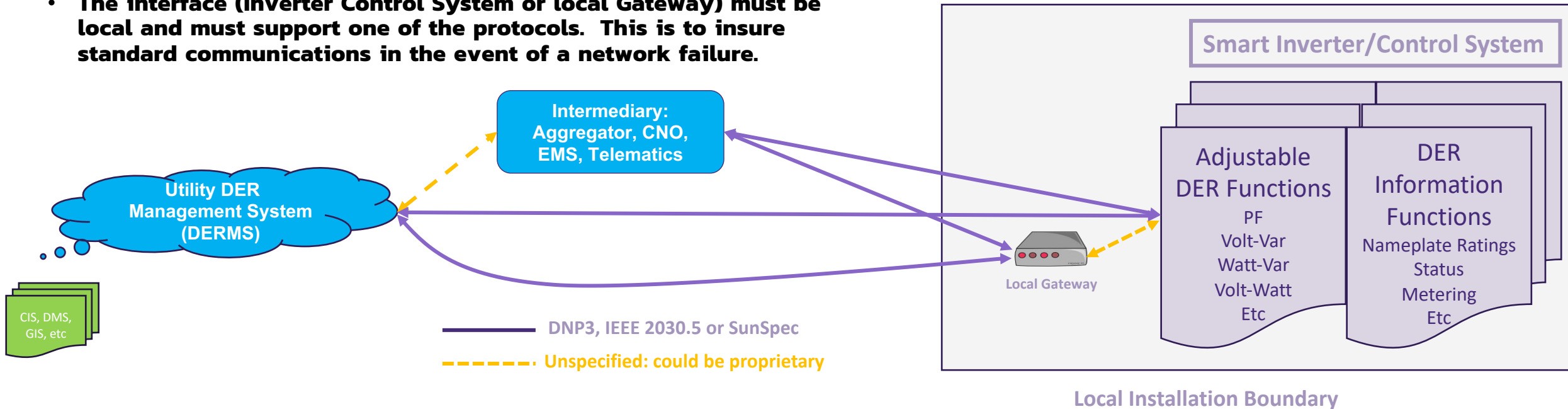
Need for Interoperability

- **With required programmable functions, communications is also required**



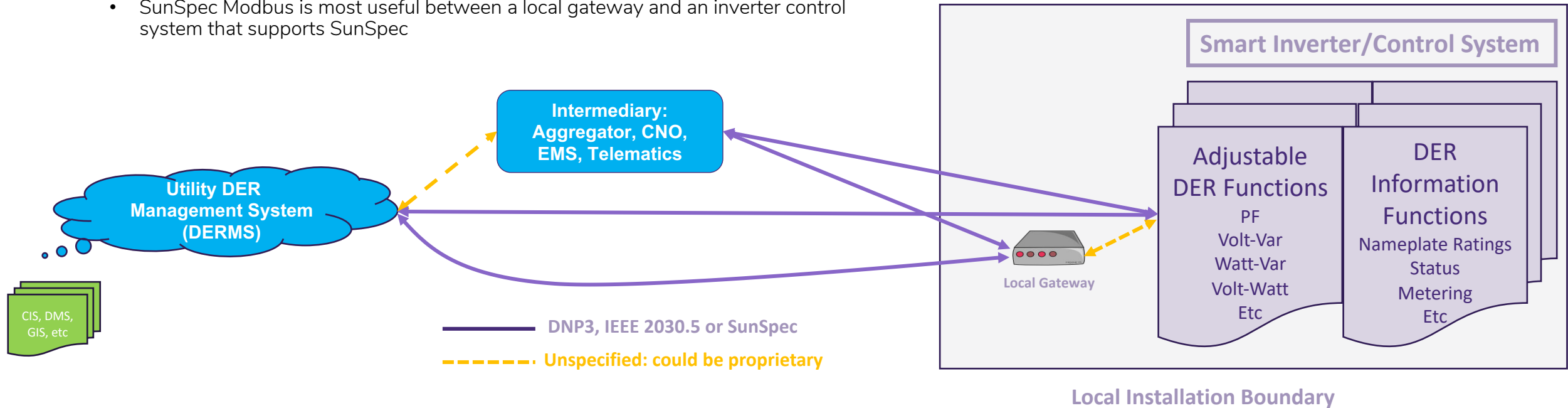
IEEE 1547 Specified Interop Protocols – Local Only

- **1547 Interop requires compliance using one of 3 named protocols.**
 - IEEE 1815 DNP3
 - IEEE 2030.5
 - SunSpec Modbus
- **The interface (Inverter Control System or local Gateway) must be local and must support one of the protocols. This is to insure standard communications in the event of a network failure.**



Which Protocol to Use?

- **The 3 named protocols have differing strengths and applications.**
 - IEEE 1815 DNP3 is best suited for larger scale DERs operated as part of real-time SCADA
 - IEEE 2030.5 is best suited for internet based, behind-the-meter DER where greater security and group management are required
 - SunSpec Modbus is most useful between a local gateway and an inverter control system that supports SunSpec



Important Limitations of 1547.1 Interop

- **Interoperability conformance to IEEE 1547.1-2020 can be achieved by demonstrating interoperability using only one of the identified protocols**
 - DNP3, IEEE 2030.5 or SunSpec
- **Interoperability requirements are limited to validating that the IEEE 1547-2018 inverter adjustable functions and information occurred correctly in the inverter**
 - Essentially spot checking the type tests with a small sample of potential settings changed through communications
- **Additional communications on nameplate ratings, configuration information and monitoring information are included in the interoperability conformance requirements**
- **Interoperability conformance in IEEE 1547-2018 is NOT a protocol conformance test.**
 - Features like security, group management, device capabilities, device discovery, etc., are not required to be tested in the conformance testing for IEEE 1547.1-2020
- **Importantly, although communications security is a critical DER issue, it is not included in IEEE 1547-2018 or IEEE 1547.1.**
- **IEEE 1547-2018 does NOT REQUIRE Utilities to use the Interop protocols. Up to Regulators and Utilities to mandate.**

IEEE 1547.1 Conformance and Automating UL 1741 SB Testing

- **IEEE 1547.1 is a Conformance specification but not a certification specification**
 - Inverters are not IEEE 1547.1 certified; they are tested for “compliance”
- **UL 1741 is the official industry standard for certification of inverter safety and includes numerous safety tests in addition to the IEEE 1547.1 conformance tests.**
- **UL 1741 SB September 2021 Revision is the updated version that clarifies the testing requirements in IEEE 1547.1**
- **Interop testing is implicit in UL 1741 SB but there are challenges:**
 - First-time communications testing have been incorporated into UL 1741 certification testing.
- **The industry has not had standardized test automation for UL 1741 historically**
- **QualityLogic’s 1547.1 Test Tools are the first commercial tools to automate UL 1741 SB Interop and Type testing**
 - Expected to reduce pre-certification and certification test time, accelerating the certification process for UL 1741 SB
 - Is being used at both NRTLs and at vendor test facilities

The Impact of IEEE 1547-2018



- **Products subject to IEEE 1547-2018 compliance: devices exporting energy to grid**
 - Bi-Directional Inverter-based DERs: Solar, Storage, V2G EVSE's and V2G PEVs
 - Wind, solar farms with inverter interconnection
 - Generators and other interconnected energy sources
- **For EVs:**
 - V1G (Charge Management) does NOT require IEEE 1547 Interconnection compliance
 - V2G-DC EVSEs will require IEEE 1547-2018 Interconnection compliance
 - V2G-AC will require On board inverter Interconnection compliance. EVSE compliance TBD in UL 1741 SC
- **IEEE 1547 standardizes**
 - Advanced inverter functions
 - Capability to support standard communications
- ***Creates opportunities to significantly reduce integration costs***

The Impact of IEEE 1547-2018



- **Utility Opportunities**

- Require standard protocol messaging to DERs from DERMS, EMS, Aggregators
- Expect standard behaviors/performance (standard functions)
- Standardized functions and comms lead to more vendors and lower costs
- Treat comms and functions of all DER in similar ways

- **Aggregator/EMS Opportunities**

- Standardize messaging to DERs: reduced integration costs
- Support more vendors with more diverse capabilities

- **Inverter Manufacturers**

- Reduces integration issues
- Expands potential market

IEEE 1547.1 Conformance



Certified under UL 1741 SB

IEEE 1547.1/UL 1741 SB Conformance Background

- **IEEE 1547.1 defines the test procedures for verifying inverter's functionality**
 - Section 5 – Type Tests define the grid support and other tests for DERs
 - Section 6 - Interoperability tests that use any of the 3 DER protocols (IEEE 2030.5, SunSpec modbus 700 and DNP3)
 - Approved by IEEE in March 2020
- **UL 1741 SB updated to reflect latest 1547.1 test requirements**
 - First publication on September 2020 that define the certification tests that DERs get certified to
 - 1741 SB revised to reflect 1547 spec issues/gaps – updated in Sept 2021
- **Testing by NRTLs and vendors require various test equipment that interacts with the target inverter**
 - Grid simulators, power analyzer, DC/PV simulator, Oscilloscope connected to DER device
- **1547.1 Interoperability test section requires use of the protocols to trigger/monitor the inverter**
 - Includes nameplate, configuration, monitoring and management tests
 - Leverages “Type” functional tests in 1547.1 Section 5
- **NRTL's estimate that total 1547 tests may take 10-12 weeks to conduct**

IEEE 1547.1 Type Tests



- **IEEE 1547.1 Type Tests (Section 5) define all the grid support functional test procedures plus others, such as temperature testing of the DER unit.**
- **Type tests define the detailed test procedures for each grid support functions**
- **Test tables (characteristics) define the various values to test for each grid support function**
 - Ex. Different VoltVar curves to test
- **Type tests iterate through different test variations**
 - Ex. VoltVar test iterates through different Vnominal %, EUT output % and multiple characteristics tables
- **Interoperability exercise the same test procedure but only two iterations**
 - Intent is to sample use of communication protocol to configure and control inverter's behavior
- **Using Type test with a DER protocol would also cover Interop tests**
- **Type tests include other grid support tests that are not included in Interoperability tests**
 - Voltage and Frequency Ride Through tests are not part of Interop tests but required in Type tests

1547.1 Interoperability Test Section

- Four different test categories that includes 47 test areas
- Nameplate data – verify nameplate data can be read from the DER
- Configuration Information – verify that DER configurations can be changed thru updated nameplate values
- Monitoring Information – verify that DER reports set of metered data
- Management Information – verify that DER can act upon set of grid functions as requested thru protocol
 - Leverages 1547.1 Type tests with less iterations

Table 44—Management Information Test List

Test	Management Function	Adjustable Settings (References to IEEE Std 1547-2018)	Criteria (References to functional test criteria within this document)	Notes
1	Constant Power Factor Mode	10.6.2, Table 30	5.14.3.3	
2	Voltage-reactive power mode	10.6.3, Table 31	5.14.4.3 and 5.14.5.3	
3	Active power-reactive power mode	10.6.4, Table 32	5.14.7.3	
4	Constant reactive power mode	10.6.5, Table 33	5.14.8.3	
5	Voltage-active power mode	10.6.6, Table 34	5.14.9.3	
6	Voltage trip test	10.6.7, Table 35	5.4.2.4 (over voltage trip settings) and 5.4.3.4 (undervoltage trip settings)	
8	Frequency trip test	10.6.8, Table 37	5.5.1.4 (over frequency trip) and 5.5.2.4 (under frequency trip)	
9	Frequency droop (frequency/power or frequency-watt) test	10.6.9, Table 38	5.15.2.3 (above nominal frequency) and 5.15.3.3 (below nominal frequency)	
10	Enter service and Cease to energize and trip tests	10.6.10, Table 39, 10.6.11	5.6.4	NOTE—This management function relates to permit service.
11	Limit maximum active power test	10.6.12, Table 40	5.13	

QualityLogic IEEE 1547.1 Conformance Test Tool

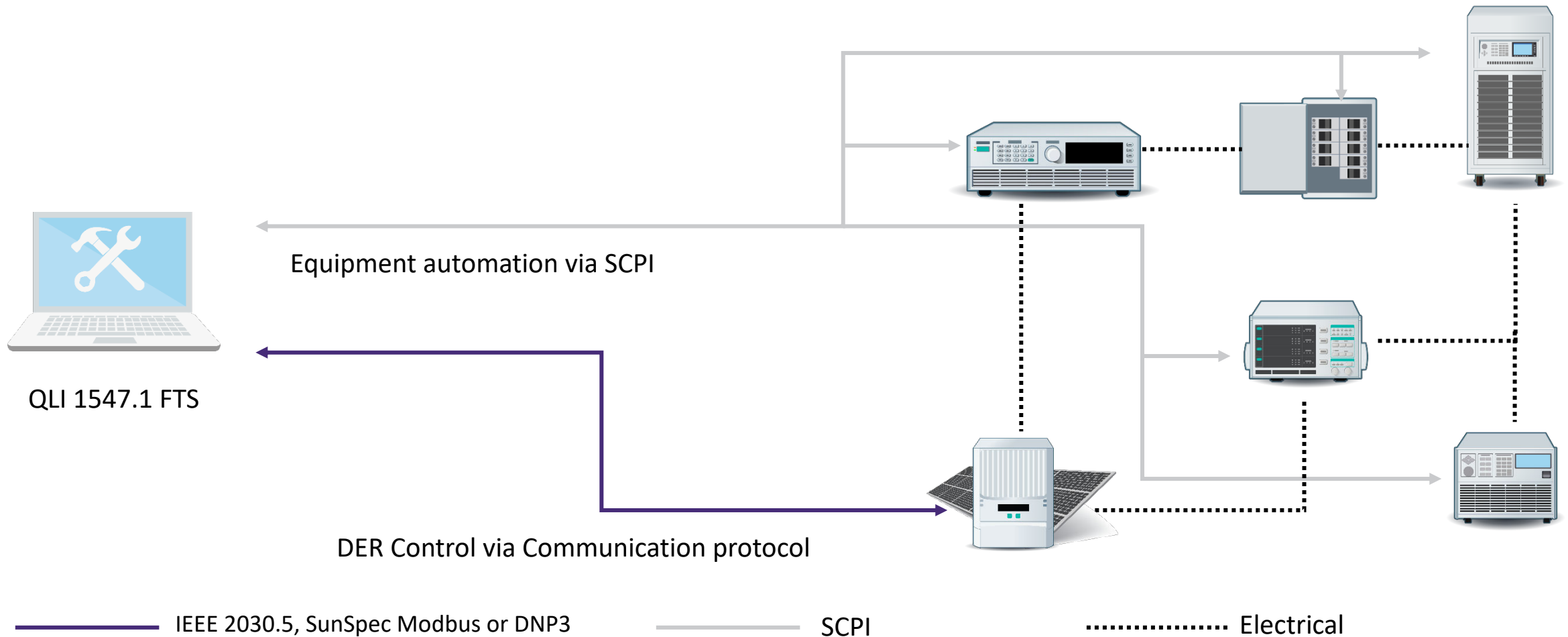
- **New 1547.1 FTS tests to cover the 1547.1 interoperability tests and related Type tests**
- **Supports the three DER protocols required by 1547 (2030.5/SunSpec/DNP3)**
- **End to end testing to verify DER communication and power level functionality using one of the three protocols**
- **Automate management and monitoring of power test equipment**
- **Reporting of monitored data from data collection devices such as power analyzers and oscilloscopes**
- **Customizable test values to handle regional grid code differences**
- **REST API to support automated testing using python or other scripting languages**
- **Provides familiar test tool interaction as the CSIP Certification Test Tool**
- **Leading NRTLs (UL, Intertek, TUV Rheinland, CSA, SGS and others) committed as Accelerator customers**
 - Helping to shape the product direction and requirements

QualityLogic 1547.1 Product Components



- **1547.1 DER Protocol Messaging Component**
 - To support 1547.1 protocol requirements: IEEE 2030.5, SunSpec Modbus and DNP3
 - Enables users to execute the 1547.1 tests using these DER protocols
- **Test Equipment Automation**
 - To automate the manual steps in managing the various equipment: grid simulator, power analyzer, etc.
 - Test tool will manage these equipment and control them as required for 1547.1 testing
- **SunSpec Modbus (700 series) and DNP3 protocols**
 - Enables 1547.1 Interop and Type tests to be executed using these protocols
- **Additional 1547.1 Type Tests**
 - Enables testing of Type tests defined in 1547.1 Section 5
 - For example, ride through Type tests are not part of Interop
- **Updates from UL 1741 SB revision implemented in the Test Tool**

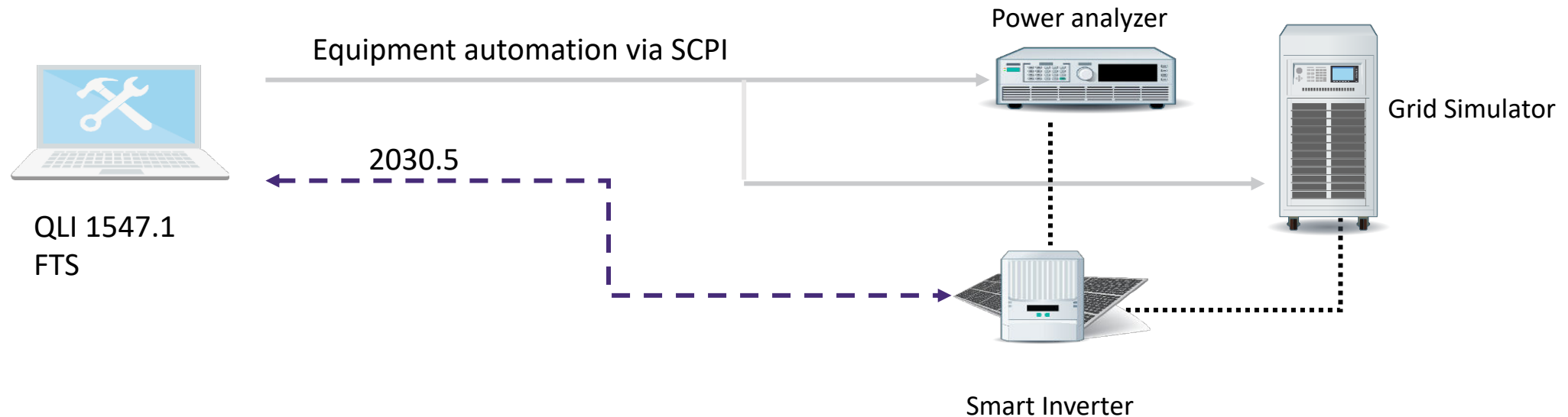
1547.1 Product Design



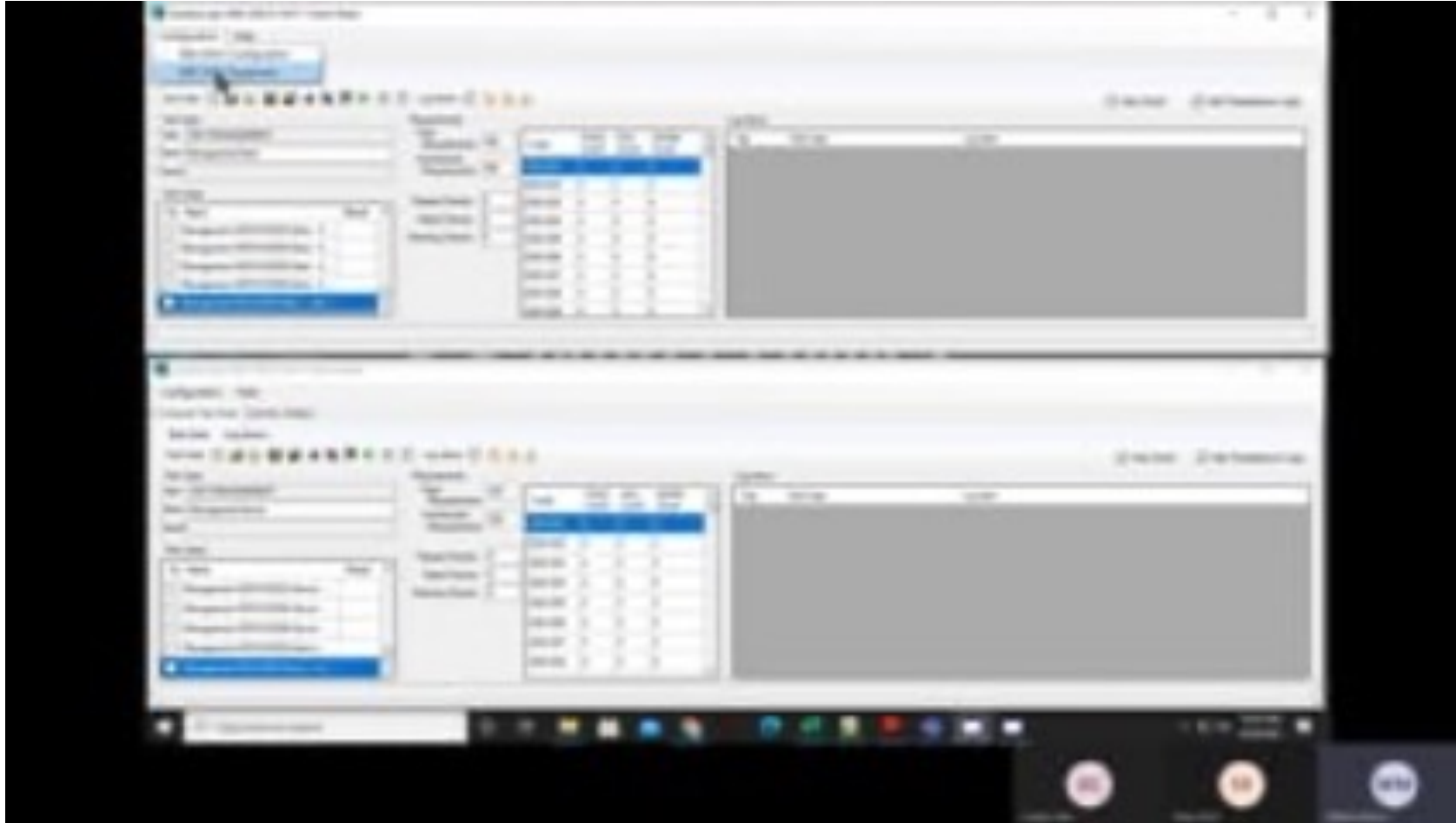
QualityLogic 1547.1 Test Tool Demo

- **Background**

- Live inverter connected to a grid simulator and power analyzer – has battery so no DC supply needed
- Our test tool managing the grid simulator and power analyzer to stimulate the inverter and monitor its behavior
- Our Server Tester is fulfilling just the 2030.5 communication since the inverter being used does not understand 2030.5



Demo Video of 1547.1 Test Tool



Summary



- **IEEE 1547.1**

- Interoperability is required because of the programmable functions in smart inverters
- Adoption is in process in a number of US states
- IEEE 1547.1 Conformance is a functional test, not a protocol test
- Interop can be done with any of 3 supported protocols (2030.5, SunSpec Modbus and DNP3)
- Inverter interface must be a local interface

- **QualityLogic Tools**

- Industry's only 2030.5/CSIP Certification Test Tool expanded to support 1547.1 interoperability testing
- Supports all 3 protocols and equipment management
- Type tests supported with any of the 3 protocols

- **Vendors can use the same version that NRTLs use – product available now to customers**

- Reduces certification testing time, risks and issues

- **For more information, please contact QualityLogic at info@qualitylogic.com**